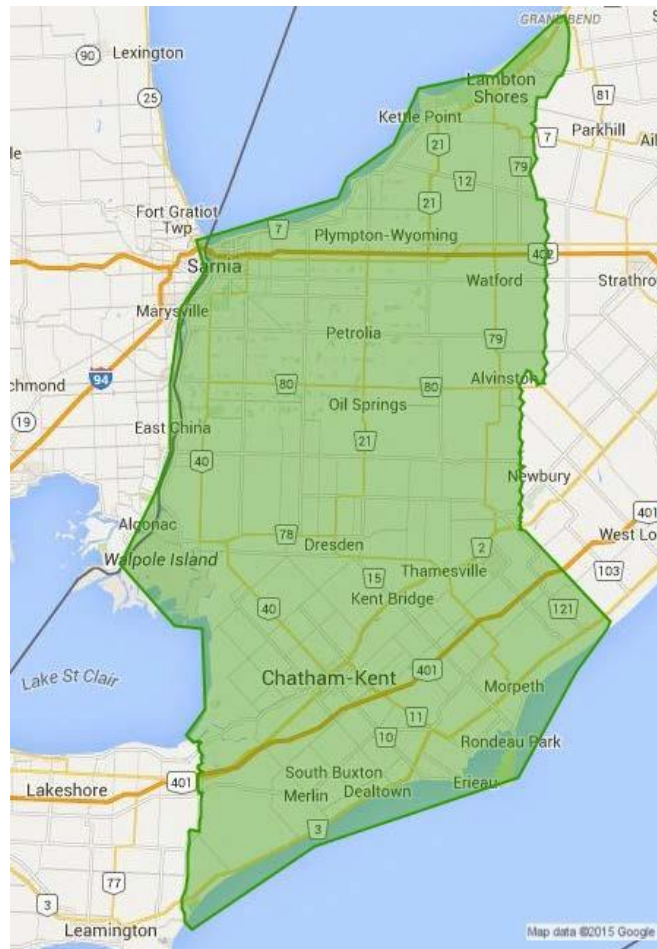




# Lambton Kent District School Board

*Student Achievement* ✓ *Community Success*

# CAPITAL PLAN



September 2016

## Table of Contents

School Closures/Opening/Consolidations .....	3
Partnerships .....	5
LKDSB Undeveloped Properties.....	5
LKDSB Child Care Sites 2016/17.....	5
Dialogue with Community Partners .....	6
DEMOGRAPHICS .....	7
Board’s Enrolment History.....	7
Birth Rates.....	8
Board’s Projected Enrolment .....	9
Summary of Current Enrolment .....	11
Explanation of Individual School Capacity Updates.....	13
Renewal Needs and Facility Condition Index (FCI) .....	14
Renovations and Additions .....	14
5 Year Renewal Data and 5 Year FCI Calculation as of September 1, 2016 .....	15
10 Year Renewal Data and 10 Year FCI Calculation as of September 1, 2016.....	17
Classrooms Reductions .....	19
Criteria to Consider for Community Partnerships .....	20
Schools for Potential Community Partnerships - Elementary.....	21
Schools for Potential Community Partnerships - Secondary .....	22
Schools for Potential Community Partnerships - Funding Loss for Schools in the 60% to 65% Range for Capacity .....	22



The Lambton Kent District School Board (LKDSB) releases a Capital Plan annually to update Community Partners on the status of LKDSB school conditions and demographics. This is done to allow the LKDSB and community organizations to work together to optimize the use of public assets.

Cooperative and collaborative relationships between school boards and community organizations are part of the foundation of a strong, vibrant and sustainable publicly funded education system. It is the responsibility of all levels of government to make the best use of public assets. The twin challenges of local enrolment changes and making the best use of education funding to support student achievement create an incentive and opportunity to maximize the use of school board facilities and properties. Offering space in schools to partners can also strengthen the role of schools in communities, provide a place for programs and facilitate the coordination of, and improve access to, services for students and the wider community.

School boards have the authority to make decisions regarding their school facilities and the use of their properties that are consistent with the *Ontario Education Act*. At the same time the *Community Planning and Partnerships Guideline (2015)* does not prevent boards from building, renovating or closing schools or from disposing of surplus assets when required. Boards will continue to identify which schools will or will not be suitable for facility partnerships based on board-determined criteria.

## SCHOOL CLOSURES/OPENING/CONSOLIDATIONS

Since amalgamation in 1998, the LKDSB has closed 14 elementary and 3 secondary schools.

YEAR of Vote By Trustees	SCHOOL CLOSURE	YEAR of Implementation	SCHOOL OPENINGS/CONSOLIDATIONS
July 1999	Hill Street Public School, Corunna Murray Street Public School, Corunna	September 1999	Sir John Moore Community School, Corunna New School (combined Hill Street and Murray Street Schools)  Blending of South Plympton School and Wyoming School <ul style="list-style-type: none"> <li>○ South Plympton – JK to Grade 3</li> <li>○ Wyoming – Grade 4 to 8</li> </ul>
July 2000	East Lambton Secondary School Warwick Central School Watford Public School  East Sombra Public School Euphemia Township Public School W.T. Laing Public School, Wallaceburg George Perry Adult Learning Centre	September 2001	East Lambton Elementary School (combined Warwick Central and Watford Public School at East Lambton Secondary School)  Blending of Hillcrest/Queen Elizabeth II Schools (Petrolia) <ul style="list-style-type: none"> <li>○ Hillcrest – JK to Grade 3</li> <li>○ Queen Elizabeth – Grade 4 to 8</li> </ul>
February 2001	McKeough Public School, Chatham closed July 1, 2001.  Orford Township Public School closed July 1, 2001  Victoria Park Public School, closed July 1, 2001	September 2001	McKeough students re-assigned to John N. Given, King George VI, Tecumseh Public and Winston Churchill Public Schools. Orford students re-assigned to Howard-Harwich Public School.  Victoria Park Students were re-assigned to Queen Elizabeth II Public School, Chatham
February 2003	Chatham Collegiate Institute closed July 1, 2003	September 2003	Students re-assigned to Chatham-Kent Secondary School and John McGregor Secondary School
July 2009/2010	Johnston Memorial Public School, Sarnia Devine Street Public School, Sarnia	July 2009/2010	P.E. McGibbon Public School, Sarnia <ul style="list-style-type: none"> <li>○ Newly built school on former Johnston Memorial Public School site.</li> <li>○ Consolidation of students from Devine Street Public School and Johnston Memorial Public School</li> </ul>
July 2011	Ridgetown Public School	September 2011	Naahii Ridge Public School (JK to Grade 6) consolidation of students Ridgeview Moravian Elementary School and Ridgetown Public School  Ridgetown District High School Grade 7 & 8
		September 2011	Hillcrest Public School, Petrolia, became a JK to Grade 8 French Immersion Single Track School École Hillcrest  Queen Elizabeth II Public School, Petrolia became a JK to Grade 8 Regular Program School

YEAR of Vote By Trustees	SCHOOL CLOSURE	YEAR of Implementation	SCHOOL OPENINGS/CONSOLIDATIONS
June 2014	D.A. Gordon Public School, Wallaceburg	September 2014	A.A. Wright Public School and H.W. Burgess Public School, Wallaceburg, became JK to Grade 6 schools.  Wallaceburg District Secondary School Grade 7 & 8
June 2016	St. Clair Secondary School and Sarnia Collegiate Institute and Technical School consolidate at the SCITS site for September 2016. SCITS site to close as of July 1, 2017. The name for the consolidated school is Great Lakes Secondary School	2016	Great Lakes Secondary School will be located at the former SCITS site for 2016/2017 and permanently at the former SCSS site as of September 2017.
June 2016	South Plympton Public School and Wyoming Public School consolidated at the Wyoming Public School site for September 2017.	2017	Name of consolidated school to be determined as the Naming Committee is underway. Consolidated school to be located at the Wyoming Public School Site. The plan is to have the students attending the Wyoming Public School Site in September 2017.

## PARTNERSHIPS

The LKDSB entered into successful partnerships in the following schools:

- Grand Bend Public School – Municipality of Lambton Shores – Library and Day Care
- Sir John Moore Community School – St. Clair Township – Community Room
- Brigden Public School – St. Clair Township – Library and Gymnasium
- Tecumseh Public School – Municipality of Chatham-Kent – Tennis Courts, Nature Trail and Sports Fields
- Wheatley Area Public School – Municipality of Chatham-Kent – Shared Playground Area and Sports Fields
- Kinnwood Central Public School – North Lambton Childcare Hub
- LKCS Sports field – Municipality of Chatham Kent partnership with outdoor facilities
- RDHS Sports field – Municipality of Chatham Kent partnership with outdoor facilities
- Access to use of Hanna Memorial Public School property for long jump activities

## LKDSB UNDEVELOPED PROPERTIES

The Board owns property in the following areas:

- Sherwood Village in South Sarnia (4.49 acres)
- Keil Drive in South Chatham (8.03 acres)
- Former Victoria Park Public School Playing Field in Central Chatham (7.42 acres)

The LKDSB has successful partnerships with the following child care providers. These facilities are designed to provide a breadth of child care services to the local community including early identification services, licensed child care spaces and programs for children age 6 months to JK/K school age. For the 2016/2017 school year, before and after programs have been added at H.W. Burgess Public School in Wallaceburg, Queen Elizabeth II Public School in Chatham and Brigden Public School. The LKDSB continues to work with LKDSB partners to establish child care sites to meet the needs of our families and our communities.

★ denotes Best Start Hubs.

## LKDSB CHILD CARE SITES 2016/17

<u>School Name</u>	<u>Child Care Provider</u>
Aberarder Central School, Camlachie	Lambton Rural Child Care
Bridgeview Public School, Point Edward	Point Edward Early Learning Centre
Brigden Public School	YMCA Child Care
Bright's Grove Public School	YMCA Child Care
Brooke Central Public School, Alvinston	Lambton Rural Child Care ★
Cathcart Public School, Sarnia	YMCA Child Care
Colonel Cameron Public School, Corunna	YMCA Child Care
East Lambton Public School, Watford	Lambton Rural Child Care
Errol Road Public School, Sarnia	YMCA Child Care
Errol Village Public School, Camlachie	Lambton Rural Child Care
Grand Bend Public School	North Lambton Child Care Centre
Hanna Memorial Public School, Sarnia	Little Friends Child Care
High Park Public School, Sarnia	YMCA Child Care
École Hillcrest, Petrolia	Generations Child Care
Kinnwood Central Public School, Forest	North Lambton Child Care Centre ★
Lakeroad Public School, Sarnia	YMCA Child Care
Lambton Centennial Public School, Petrolia	Generations Child Care
Lansdowne Public School, Sarnia	YMCA Child Care
King George VI Public School, Sarnia	London Bridge
P.E. McGibbon Public School, Sarnia	YMCA Child Care
Queen Elizabeth II Public School, Sarnia	London Bridge

<u>School Name</u>	<u>Child Care Provider</u>
Queen Elizabeth II Public School, Petrolia	Generations Child Care
Riverview Central School, Port Lambton	Sombra Township Child Day Care Centre ★
Rosedale Public School, Sarnia	YMCA Child Care
Sir John Moore Community Public School, Corunna	YMCA Child Care
South Plympton/Wyoming Public School	Generations Day Care
A.A. Wright Public School, Wallaceburg	The Family Centre
Dresden Area Central School	Lambton Rural Child Care
Gregory Drive Public School, Chatham	Kid's Stuff Family Learning Centre
H. W. Burgess Public School, Wallaceburg	The Family Centre
Harwich Raleigh Public School, Blenheim	Growing Together Family Resource Centre
Indian Creek Road Public School, Chatham	YMCA Child Care
King George VI Public School, Chatham	YMCA Child Care
John N Given Public School, Chatham	YMCA Child Care
McNaughton Avenue Public School, Chatham	YMCA Child Care
Merlin Area Public School	Tilbury Tots Early Learning Centre
Naahii Ridge Public School, Ridgetown	Ridge K.I.D.S. ★
Queen Elizabeth II Public School, Chatham	Kid's Stuff Family Learning Centre
Thamesville Area Public School	Thamesville and Area Early Learning Centre
Tilbury Area Public School	Tilbury Tots Early Learning Centre
Victor Lauriston Public School, Chatham	Kid's Stuff Family Learning Centre
Tecumseh Public School, Chatham	Growing Together Family Resource Centre
Winston Churchill Public School, Chatham	Kid's Stuff – The Family Learning Centre ★
W.J. Baird Public School, Blenheim	Growing Together Family Resource Centre ★
Wheatley Area Public School	Tilbury Tots Early Learning Program
Zone Township Central School, Bothwell	Thamesville and Area Early Learning Centre

The LKDSB has responded and will continue to respond to requests for further community partnerships where appropriate.

In 2015 the Ministry of Education restructured portions of the Grants for Student Needs (GSN), which determine in large part the annual funding available for school boards. Specifically, funding for principals, vice-principals, secretaries, custodians, excess pupil spaces and classroom maintenance has been altered significantly as has the formula for the Ministry's urban and rural school designation. The result is an overall reduction in funding which now requires a new approach to the LKDSB Capital Plan, whereby the Board must make decisions regarding future school consolidations and capital needs while maintaining public confidence.

### **Dialogue with Community Partners**

Capital Planning and Pupil Accommodation involves sharing of information between the LKDSB and our community partners. To further support our information we have received and/or reviewed the following information in preparation for the CPP Meeting and for the upcoming Pupil Accommodation Report. In addition we continue to meet with our municipal partners on a variety of issues to further support our shared communities.

<b>Community</b>	<b>Document</b>	<b>Date Reviewed by the LKDSB</b>
Municipality of Chatham-Kent	The Municipality of Chatham-Kent Parks and Recreation Master Plan	September 2016
Municipality of Chatham-Kent	Draft Chatham-Kent Official Plan	September 2016
County of Lambton	Population Projections for the County of Lambton Planning and Development Services Department	October 2015
County of Lambton	Draft County of Lambton Official Plan	September 2016
City of Sarnia	City of Sarnia Official Plan	April 2016

# DEMOGRAPHICS

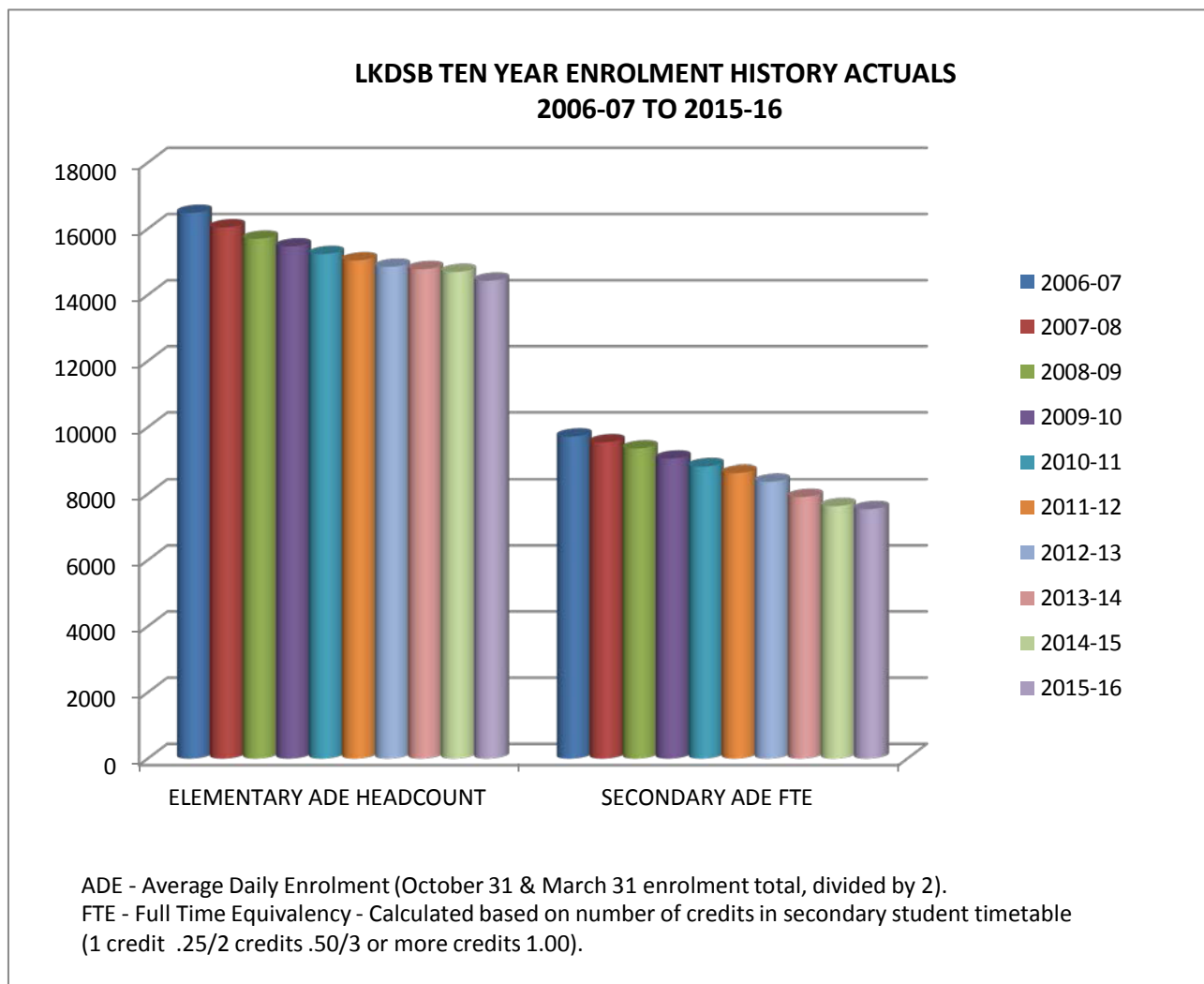
## Board's Enrolment History

Enrolment in the Lambton Kent District School Board has continued to decline since amalgamation in 1998. The chart below indicates a decline in overall enrolment of 16.1% was experienced in the 2015-16 school year in comparison to enrolment of ten years earlier in the 2006-07 school year.

**COMPARISON OF TOTAL STUDENT AVERAGE DAILY ENROLMENT BY HEADCOUNT**

	2006-2007	2015-2016	Change	% Change
<b>Elementary Enrolment</b>	16,480	14,429	(2,051)	(12.5%)
<b>Secondary Enrolment</b>	9,794	7,622	(2,172)	(22.2%)
<b>Totals</b>	26,274	22,051	(4,223)	(16.1%)

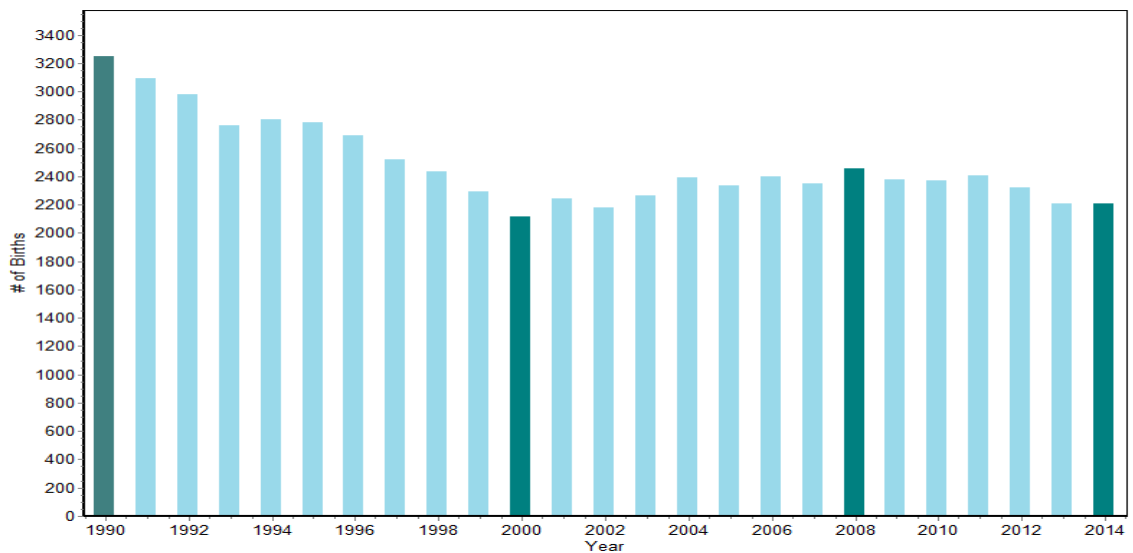
As outlined in the chart below, elementary and secondary enrolment in the past ten years has continued to decline. Elementary enrolment has shown signs of leveling off, while secondary continues to decline. Secondary decline can be attributed to smaller sized elementary classes transferring from elementary to secondary school, and the fact that not all secondary students are funded as fulltime students. A student enrolled in less than three courses per semester is funded as a part time student.





## Birth Rates

Birth data on a Board-wide basis for the period of 1990 through 2014 illustrates a significant decline from a peak of 3,249 births in 1990, to a low of 2,118 in 2000. In the years following, the birth rates have remained relatively stable, with a high of 2,452 in 2008. In 2014, the birth rate data available indicates the birth rate for the LKDSB catchment area was reported as 2,209.

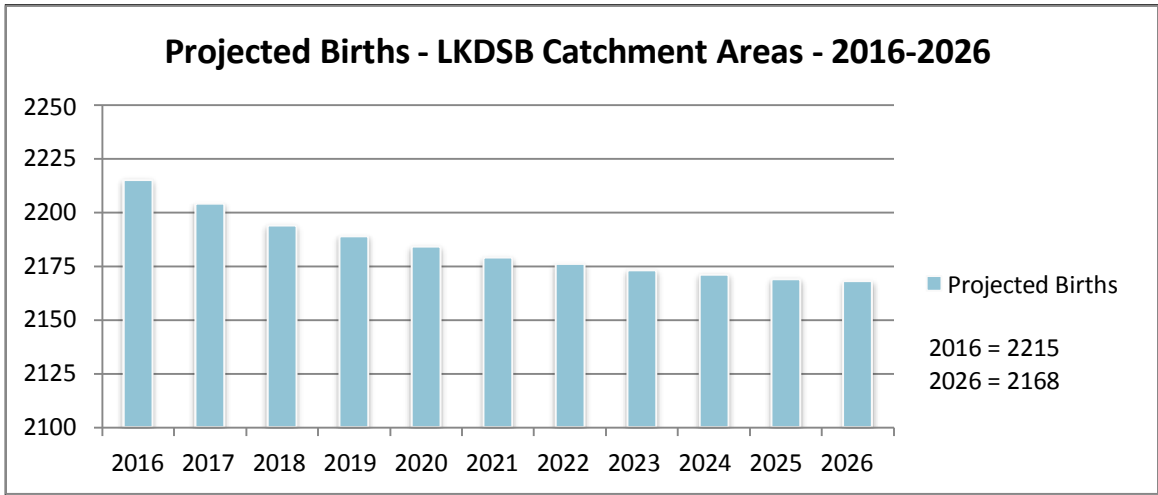


Data sources used by the Board's planning software to determine the birth rate include the Provincial Birth Registry, Canada Revenue Agency Child Tax Credit information, and available Census data.

The projection of births is key for planning purposes. In April of 2015, Statistics Canada updated birth projections for the province as a whole. As outlined below, births in the entire province are projected to increase annually for the next ten years, if the most recent 3 year average rates of migration and fertility continue. This projection is also supported by a comparison of the census data reported for our Board's catchment areas from 2006 vs. data available as of 2011. In comparison to data of one year ago for the 2015-2025 timeline, updated birth rate assumptions predict a greater increase in provincial assumptions, but a greater decrease for the LKDSB years 2015 to 2025 in comparison to last year's assumptions.

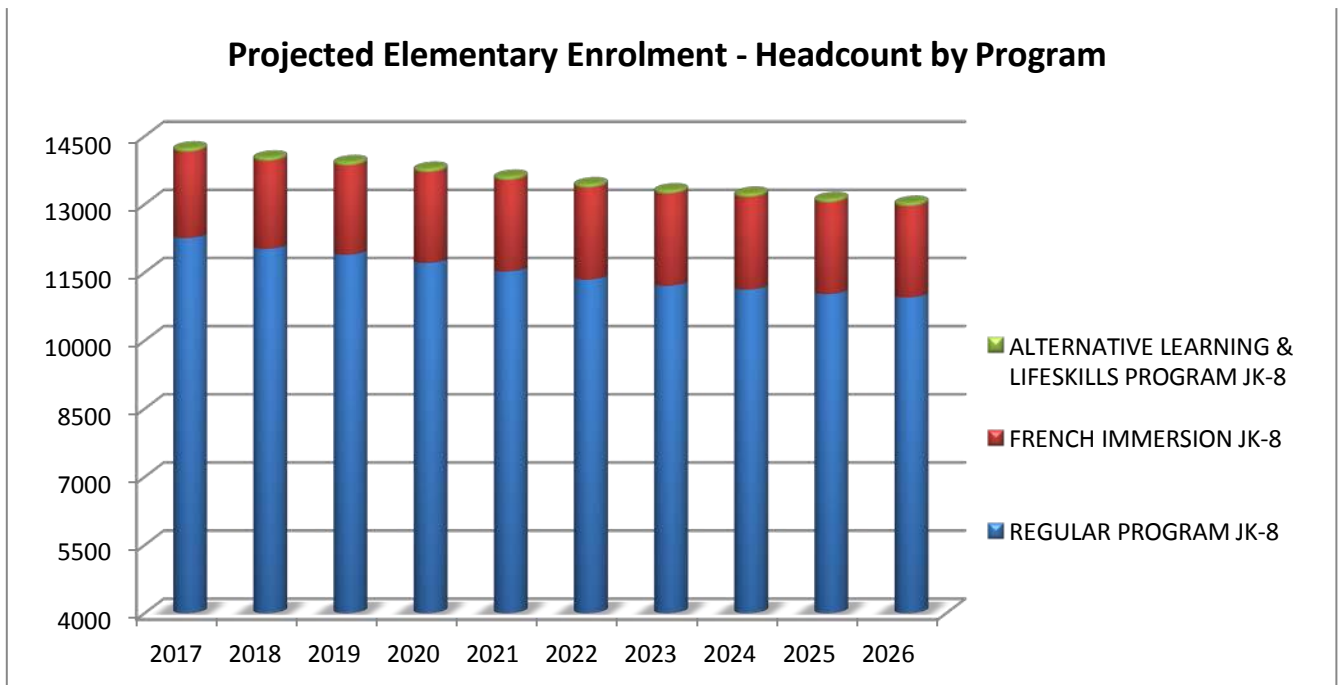
Year	Statistics Canada Provincial Birth Rate Assumptions	LKDSB Catchment Area Birth Rate Assumptions
2010 to 2015	+6.5%	-4.3%
2015 to 2020	+6.8%	-1.8%
2020 to 2025	+2.6%	-0.6%
2025 to 2030	-1.3%	-0.2%

Birth rate projections for the LKDSB for 2016 to 2026 show a decline in birth rates to continue. In 2016, 2,215 births are projected. In 2026, the projection is 2,169 births, a difference of 47 births.

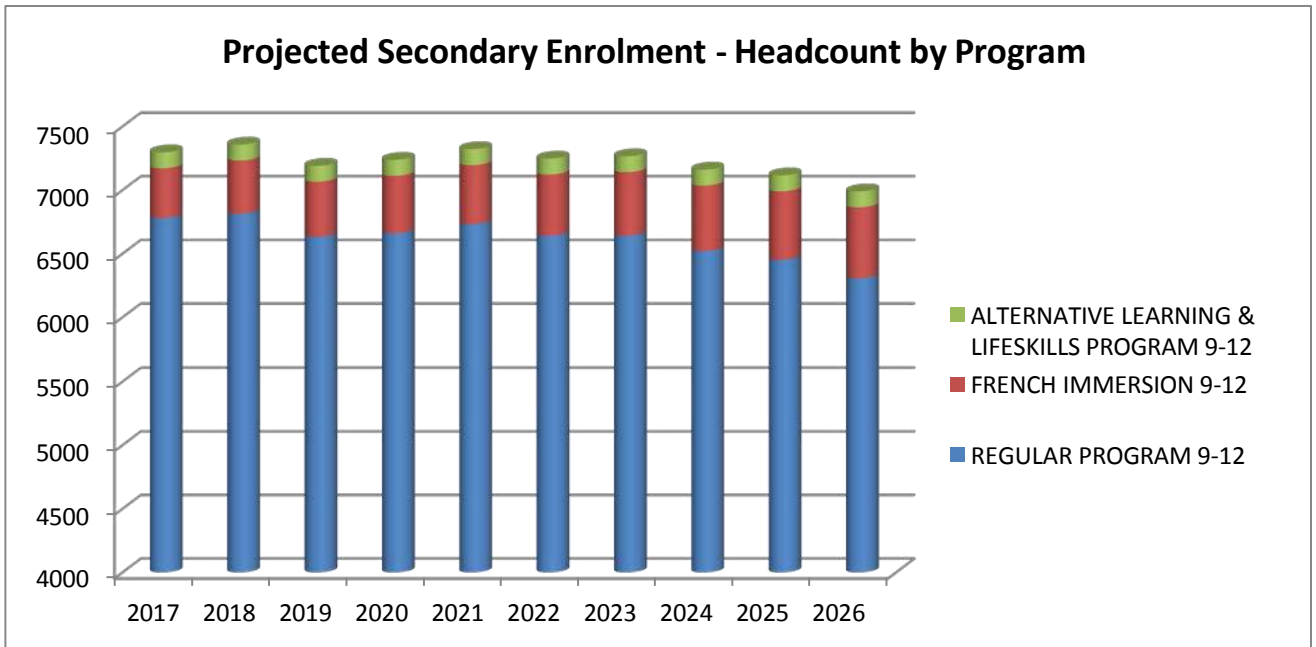


**Board’s Projected Enrolment**

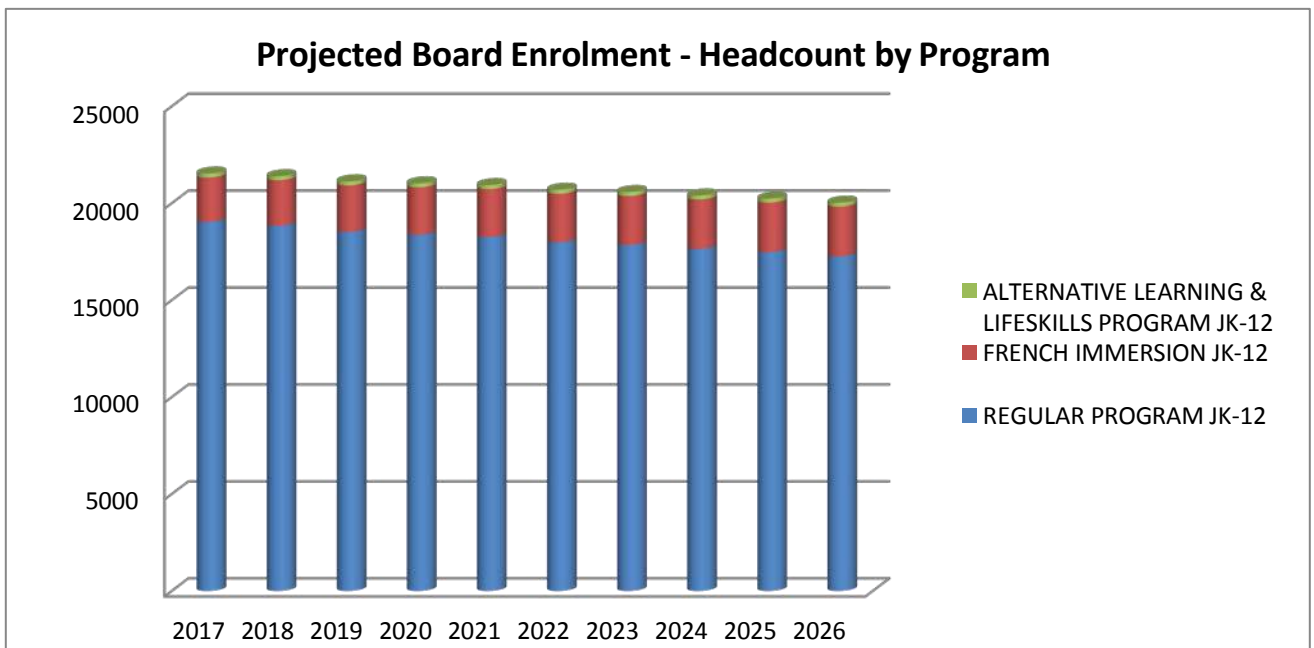
Elementary headcount is projected to continue to decline. This decline in enrolment is a result of the anticipated decline in birth rates, resulting in a smaller number of eligible JK students. In 2017, a high of 14,234 elementary aged students is projected, while 2026 projects an elementary enrolment of 13,037, a decline of 1,197 students in ten years.



Secondary enrolment (under 21) is projected to continue to decline over the next ten years. The numbers indicate a slight increase in some years as a larger elementary class moves to secondary. In 2026, an estimated headcount of 6,990 is projected, a decline of 307 total students from the 2017 projection of 7,297. It is important to note that with secondary enrolment, not all students in this headcount will be funded as fulltime students.



Overall LKDSB enrolment is projected to decline; however, that rate of decline is not projected to occur as rapidly as it has occurred over the past ten years.



By 2026, projections indicate that the overall LKDSB enrolment is expected to decline by approximately 1,504 students.

- Enrolments for JK-8 are projected to decrease by 1,197 students
- Enrolments for 9-12 are projected to decrease by 307 students

## **Summary of Current Enrolment**

For the 2016-17 school year, the LKDSB has experienced an unexpected increase in the elementary enrolment. As of September 14, 2016, there are 14,561 elementary aged students registered in our schools, an increase of 132 students or 1% over the 2015-16 elementary average daily enrolment of 14,429. This increase in elementary enrolment is a welcomed change for the LKDSB, and is attributed to families relocating to the LKDSB from other boards, as well as from other provinces and countries. This is the first time since amalgamation that elementary enrolment experienced a slight increase.

Secondary enrolment for the 2016-17 year is currently reporting as 7,455 total students, 286 less students than were enrolled on October 31, 2015.

It is to be noted that these numbers represent student enrolment as of September 14, 2016, and that enrolment will fluctuate based on additional student admissions and/or departures that will occur between now and the first Ministry funding date of October 31<sup>st</sup>.

### Elementary Capacity Levels – Headcount – Current & Projections

	Capacity	Sept. Actual	October Enrolment Projections			Percentage Capacity			
		at Sep 14-16	2017	2018	2019	at Sep 14-16	2017	2018	2019
AAWright	268	278	273	267	268	104%	102%	100%	100%
Aberarder	199	114	118	106	105	57%	59%	53%	53%
Bosanquet	328	184	184	185	188	56%	56%	56%	57%
Bridgeview	277	175	170	167	162	63%	61%	60%	58%
Brigden	305	211	214	208	195	69%	70%	68%	64%
Bright's Grove	378	340	324	316	311	90%	86%	84%	82%
Brooke Central	386	274	266	265	265	71%	69%	69%	69%
Cathcart	518	554	564	572	582	107%	109%	110%	112%
Colonel Cameron	340	200	197	188	172	59%	58%	55%	51%
Confederation	305	223	220	223	212	73%	72%	73%	70%
Dawn-Euphemia	256	127	114	119	119	50%	45%	46%	46%
Dresden	446	360	382	378	380	81%	86%	85%	85%
East Lambton	351	212	211	211	210	60%	60%	60%	60%
École Hillcrest	259	258	269	273	269	100%	104%	105%	104%
Errol Road	458	436	458	465	469	95%	100%	102%	102%
Errol Village	190	175	162	150	151	92%	85%	79%	79%
Grand Bend	248	232	185	174	171	94%	75%	70%	69%
Gregory Drive	374	266	259	257	244	71%	69%	69%	65%
Hanna Memorial	383	201	210	206	195	52%	55%	54%	51%
Harwich-Raleigh	581	400	362	351	351	69%	62%	60%	60%
High Park	553	390	383	379	376	71%	69%	69%	68%
HW Burgess	271	173	158	156	157	64%	58%	58%	58%
Indian Creek	643	520	545	547	555	81%	85%	85%	86%
John N Given	351	249	254	255	255	71%	72%	73%	73%
King George VI-Chatham	340	327	333	333	338	96%	98%	98%	99%
King George VI-Sarnia	374	277	283	281	279	74%	76%	75%	75%
Kinwood	331	278	266	263	254	84%	80%	79%	77%
Lakeroad	394	153	158	153	156	39%	40%	39%	40%
Lambton Centennial	337	199	203	202	204	59%	60%	60%	61%
Lansdowne	389	299	331	328	322	77%	85%	84%	83%
London Road	282	172	178	171	171	61%	63%	61%	61%
McNaughton	757	697	674	667	669	92%	89%	88%	88%
Merlin	328	178	198	198	190	54%	60%	60%	58%
Mooretown	256	99	102	101	101	39%	40%	39%	39%
Naahii Ridge	375	266	275	262	264	71%	73%	70%	70%
PE McGibbon	530	515	472	476	483	97%	89%	90%	91%
Queen E II - Chatham	442	317	312	309	305	72%	71%	70%	69%
Queen E II - Petrolia	397	347	319	307	300	87%	80%	77%	76%
Queen E II - Sarnia	475	270	277	263	247	57%	58%	55%	52%
RDHS Gr 7/8	92	86	72	75	79	93%	78%	82%	86%
Riverview	268	160	172	156	149	60%	64%	58%	56%
Rosedale	492	493	445	440	443	100%	90%	89%	90%
Sir John Moore	472	512	483	484	500	108%	102%	103%	106%
South Plympton	144	128				89%			
Tecumseh	557	344	323	325	311	62%	58%	58%	56%
Thamesville	199	138	130	126	128	69%	65%	63%	64%
Tilbury Area	470	386	336	311	297	82%	71%	66%	63%
Victor Lauriston	533	351	313	301	299	66%	59%	56%	56%
WDSS Gr 7/8	161	143	140	133	136	89%	87%	83%	84%
Wheatley	337	186	178	170	169	55%	53%	50%	50%
Winston Churchill	374	247	240	229	230	66%	64%	61%	61%
WJ Baird	291	189	215	212	214	65%	74%	73%	74%
Wyoming	202/257	120	242	234	238	59%	94%	91%	93%
Zone	219	132	129	119	118	60%	59%	54%	54%
<b>Totals</b>	<b>19486</b>	<b>14561</b>	<b>14281</b>	<b>14047</b>	<b>13956</b>	<b>75%</b>	<b>74%</b>	<b>72%</b>	<b>72%</b>

### Secondary Capacity Levels – Headcount – Current & Projections

	Capacity	Sep Actual	October Enrolment Projections			Percentage Capacity			
		at Sep 14-16	2017	2018	2019	at Sep 14-16	2017	2018	2019
<b>AMSS</b>	681	425	443	449	452	62%	65%	66%	66%
<b>BDHS</b>	747	313	321	318	317	42%	43%	43%	42%
<b>CKSS</b>	1407	1164	1123	1086	1092	83%	80%	77%	78%
<b>GLSS</b>	1029	1048	1074	1079	1052	102%	104%	105%	102%
<b>JMSS</b>	921	601	595	621	589	65%	65%	67%	64%
<b>LCCVI</b>	1164	780	791	833	812	67%	68%	72%	70%
<b>LKCS</b>	756	298	271	263	241	39%	36%	35%	32%
<b>NCIVS</b>	1341	1066	1013	1005	1002	79%	76%	75%	75%
<b>NLSS</b>	822	547	515	523	505	67%	63%	64%	61%
<b>RDHS</b>	474	202	181	181	154	43%	38%	38%	32%
<b>TDHS</b>	516	388	343	351	353	75%	66%	68%	68%
<b>WDSS</b>	1161	623	627	619	593	54%	54%	53%	51%
<b>Totals</b>	<b>11019</b>	<b>7455</b>	<b>7297</b>	<b>7328</b>	<b>7162</b>	<b>68%</b>	<b>66%</b>	<b>67%</b>	<b>65%</b>

AMSS	Alexander Mackenzie Secondary School
BDHS	Blenheim District High School
CKSS	Chatham Kent Secondary School
GLSS	Great Lakes Secondary School
JMSS	John McGregor Secondary School
LCCVI	Lambton Central Collegiate & Vocational Institute
LKCS	Lambton Kent Composite School
NLSS	North Lambton Secondary School
NCIVS	Northern Collegiate Institute and Vocational School
RDHS	Ridgetown District High School
TDHS	Tilbury District High School
WDSS	Wallaceburg District Secondary School

#### **Explanation of Individual School Capacity Updates**

In 2015/16 The Ministry of Education implemented an audit of school boards reported On-the-Ground (OTG) Capacity in the School Facilities Inventory System (SFIS) for 50 sites per year throughout the province to coincide with the next cycle of condition assessments between 2016 and 2020.

In order to be compliant with the Ministry of Education's audit process The Lambton Kent District School Board conducted an internal audit of all facilities to ensure SFIS available pupil spaces data was updated. Site visits were made and school administrators were consulted. This process found some minor differences with Ministry data and LKDSB information. These differences have now been updated. These updates resulted in 336 more pupil spaces being available in our elementary schools, which is an increase of slightly over 1%. Updates in secondary resulted in a decrease of 138 pupil spaces, which is a 1% decrease in overall capacity. This secondary update does not include the reduction in pupil spaces due to the consolidation to Great Lakes Secondary School.

## **RENEWAL NEEDS AND FACILITY CONDITION INDEX (FCI)**

The FCI and renewal needs data is provided by a Ministry of Education contracted consultant. This consultant is responsible for the assessment of schools across the province over a rolling five year period. Approximately 20% of schools in the province are assessed on an annual basis. The renewal and FCI data are provided in a database called VFA. LKDSB uses this data for capital planning purposes in determining capital needs in schools and in prioritizing capital budgeting. LKDSB looks at renewal needs over both 5 year and 10 year periods. The FCI data is a dynamic database in that the information is in a state of constant update as the LKDSB completes capital projects and the Ministry conducts new assessments of the buildings.

The LKDSB's annual budget contains capital renewal funding which is comprised of School Renewal Grants and School Condition Grants. Both of these grants are applied to the capital needs of the LKDSB's facilities in the following areas:

- Building Shell - including walls, foundation and roof;
- Building Site Work - including parking lots, sidewalks and playground asphalt;
- Building Systems - including heating, plumbing and electrical;
- Interior Spaces - including classroom interiors.

Current annual funding is not sufficient to cover the current capital needs of the LKDSB which is resulting in a sizable funding gap. This funding gap is projected to increase each year over the next 10 years unless additional funding is available.

### **Renovations and Additions**

Significant renovations to the LKDSB schools are funded annually in the LKDSB's approved budget. In the summer of 2016, approximately \$10 million was spent in over 20 schools for various capital projects including heating/HVAC replacement and upgrades, mechanical/electrical upgrades, roofing replacements, structural reinforcement, paving of parking lots and student play areas, track and field renovations, lighting upgrades and retrofits and voltage harmonization. These projects were funded from the LKDSB's Capital Allocation Grant which is comprised of School Condition and School Renewal Grants.

Additions to LKDSB facilities may be funded from additional Ministry of Education grants. These grants are application-based with the LKDSB completing a separate application for each capital request. Each request is evaluated by the Ministry of Education with only approved projects receiving funding. The LKDSB competes against other school boards for this application-based funding and can only submit projects when available funding programs are announced by the Ministry. The LKDSB currently has three capital grant applications before the Ministry of Education for review. These applications were the result of the Sarnia South Secondary Schools Consolidation (2 applications) and the Wyoming Area Public Schools Consolidation (1 application).

## 5 Year Renewal Data and 5 Year FCI Calculation as of September 1, 2016

School Name	School ID	5 Year Facility Condition Index (FCI)	Gross Floor Area - m <sup>2</sup>	Total Cost of Facility Work - 5 year period (\$)	Facility Replacement Value (\$)
Tilbury District High School	S1200062	87.90%	7,632	13,782,257	15,679,700
A A Wright Public School	S1200003	73.83%	2,978	4,637,985	6,281,990
Lambton Kent Composite School	S1200058	72.73%	13,567	14,626,614	20,110,300
Dresden Area Central School	S1200015	65.30%	4,377	7,295,341	11,171,280
John McGregor Secondary School	S1200055	63.49%	13,643	14,914,894	23,490,180
Mooretown-Courtright Public School	S1200036	63.37%	2,091	4,019,306	6,342,400
W J Baird Public School	S1200046	62.62%	3,296	4,107,723	6,559,440
Riverview Central School	S1200040	62.20%	2,379	3,796,187	6,103,320
East Lambton Elementary School	S1200064	60.15%	4,163	4,681,015	7,782,610
Tecumseh Public School	S1200042	58.90%	5,915	6,837,488	11,607,990
Cathcart Boulevard Public School	S1200010	56.66%	3,828	6,199,262	10,940,410
Indian Creek Road Public School	S1200025	56.64%	5,376	7,126,778	12,581,730
Queen Elizabeth II Public School - Petrolia	S1200065	56.14%	3,554	4,721,634	8,410,090
Colonel Cameron Public School	S1200051	55.88%	3,005	4,324,101	7,737,640
South Plympton Public School	S1200068	55.29%	1,466	2,227,861	4,029,580
Chatham-Kent Secondary School	S1200056	55.07%	17,424	21,423,371	38,903,960
Bridgeview Public School	S1200006	54.80%	2,909	3,376,499	6,161,450
Harwich-Raleigh Public School	S1200022	54.63%	5,100	6,163,429	11,282,310
Brigden Public School	S1200007	53.38%	2,332	3,535,250	6,622,510
Lakeroad Public School	S1200030	53.35%	2,962	4,482,039	8,401,400
Victor Lauriston Public School	S1200045	52.68%	3,852	5,293,280	10,047,230
Ridgetown District High School	S1200059	52.40%	8,710	7,571,926	14,449,190
North Lambton Secondary School	S1200054	52.29%	9,359	10,443,093	19,970,150
Merlin Area Public School	S1200035	52.13%	2,512	3,419,421	6,559,440
John N Given Public School	S1200026	51.61%	2,602	3,948,210	7,650,200
Lambton Central Collegiate Vocational Institute	S1200057	50.58%	16,382	16,703,586	33,027,200
Queen Elizabeth II Public School - Chatham	S1200037	49.74%	3,961	4,271,007	8,586,870
Sarnia Collegiate Institute & Technical School	S1200060	49.36%	16,289	14,579,633	29,536,110
Blenheim District High School	S1200053	48.20%	11,926	9,940,834	20,625,390
Alexander Mackenzie Secondary School	S1200052	48.15%	9,759	11,235,147	23,334,530
Errol Road Public School	S1200017	46.87%	3,715	4,318,954	9,214,250
London Road Public School	S1200033	46.82%	2,600	2,997,499	6,402,800
Bosanquet Central School	S1200005	46.53%	2,769	3,397,156	7,301,450
Winston Churchill Public School	S1200048	45.79%	3,161	3,774,669	8,242,880
H.W. Burgess Public School	S1200020	44.42%	1,915	2,795,449	6,292,740
Wallaceburg District Secondary School	S1200063	43.97%	17,564	15,543,199	35,349,600
Queen Elizabeth II Public School - Sarnia	S1200038	43.71%	3,128	3,995,288	9,140,450
Wheatley Area Public School	S1200047	43.58%	3,077	3,457,442	7,933,000
King George VI Public School - Chatham	S1200028	43.34%	2,640	3,212,982	7,413,520
Kinnwood Central Public School	S1200049	43.06%	3,896	3,153,716	7,323,320
Northern Collegiate Institute and Vocational	S1200002	42.95%	17,916	16,153,634	37,608,850
High Park Public School	S1200023	42.78%	4,161	4,883,860	11,414,950
Tilbury Area Public School	S1200044	42.76%	3,822	3,686,983	8,622,640
McNaughton Ave Public School	S1200034	41.27%	5,754	6,428,775	15,577,530
Confederation Central School	S1200011	40.72%	2,331	2,728,478	6,700,610
Thamesville Area Central School	S1200043	39.92%	1,737	2,201,658	5,515,620
St Clair Secondary School	S1200061	39.76%	14,049	13,081,474	32,899,870
Errol Village Public School	S1200016	39.25%	1,872	2,086,833	5,316,800



School Name	School ID	5 Year Facility Condition Index (FCI)	Gross Floor Area - m <sup>2</sup>	Total Cost of Facility Work - 5 year period (\$)	Facility Replacement Value (\$)
Aberarder Central School	S1200004	39.10%	1,696	2,177,595	5,568,650
Wyoming Public School	S1200066	38.04%	1,964	2,217,008	5,827,870
King George VI Public School - Sarnia	S1200029	36.45%	2,864	2,950,291	8,094,850
Hanna Memorial Public School	S1200021	35.56%	3,320	2,901,481	8,158,270
Lansdowne Public School	S1200032	34.07%	3,234	2,868,787	8,420,040
Naahii Ridge Public School	S1200024	33.88%	3,944	3,063,008	9,040,390
Gregory Drive Public School	S1200019	33.62%	3,153	2,773,458	8,249,060
Dawn-Euphemia School	S1200013	33.28%	1,958	2,021,653	6,074,330
Rosedale Public School	S1200041	32.42%	3,581	3,287,324	10,139,640
Hillcrest Public School	S1200067	31.95%	2,240	1,942,471	6,079,840
Lambton Central Centennial School	S1200031	31.17%	3,078	2,419,267	7,762,500
Brooke Central School	S1200009	30.68%	4,104	2,577,179	8,399,600
Bright's Grove Elementary School	S1200008	27.57%	3,664	2,236,363	8,110,650
Zone Township Central School	S1200050	27.16%	1,732	1,567,575	5,772,360
Sir John Moore Public School	S1200001	24.77%	4,628	2,467,409	9,960,800
Grand Bend Public School	S1200018	11.17%	2,707	679,888	6,084,230
P. E. McGibbon Public School	S1200027	5.68%	4,487	620,034	10,909,060

TOTALS:

47.90%

\$ 366,354,011 \$ 764,909,620

## 10 Year Renewal Data and 10 Year FCI Calculation as of September 1, 2016

School Name	School ID	10 Year Facility Condition Index (FCI)	Gross Floor Area - m <sup>2</sup>	Total Cost of Facility Work - 10 year period (\$)	Facility Replacement Value (\$)
Tilbury District High School	S1200062	101.79%	7,632	15,960,319	15,679,700
Sir John Moore Public School	S1200001	98.13%	4,628	9,774,282	9,960,800
Colonel Cameron Public School	S1200051	81.95%	3,005	6,341,278	7,737,640
W J Baird Public School	S1200046	81.09%	3,296	5,319,176	6,559,440
A A Wright Public School	S1200003	80.17%	2,978	5,036,585	6,281,990
John McGregor Secondary School	S1200055	79.53%	13,643	18,681,648	23,490,180
Dresden Area Central School	S1200015	73.52%	4,377	8,213,189	11,171,280
Lambton Kent Composite School	S1200058	72.82%	13,567	14,644,724	20,110,300
East Lambton Elementary School	S1200064	72.70%	4,163	5,657,737	7,782,610
Mooretown-Courtright Public School	S1200036	71.92%	2,091	4,561,511	6,342,400
Blenheim District High School	S1200053	70.79%	11,926	14,601,311	20,625,390
Bridgeview Public School	S1200006	68.63%	2,909	4,228,532	6,161,450
Tecumseh Public School	S1200042	67.71%	5,915	7,859,763	11,607,990
Victor Lauriston Public School	S1200045	65.76%	3,852	6,606,644	10,047,230
Winston Churchill Public School	S1200048	65.55%	3,161	5,403,358	8,242,880
North Lambton Secondary School	S1200054	65.01%	9,359	12,982,058	19,970,150
Harwich-Raleigh Public School	S1200022	64.77%	5,100	7,308,109	11,282,310
Queen Elizabeth II Public School - Petrolia	S1200065	63.87%	3,554	5,371,736	8,410,090
Sarnia Collegiate Institute & Technical School	S1200060	63.46%	16,289	18,744,046	29,536,110
Riverview Central School	S1200040	63.11%	2,379	3,851,951	6,103,320
Indian Creek Road Public School	S1200025	62.29%	5,376	7,836,571	12,581,730
Ridgetown District High School	S1200059	61.06%	8,710	8,823,171	14,449,190
Cathcart Boulevard Public School	S1200010	61.00%	3,828	6,673,742	10,940,410
Errol Road Public School	S1200017	58.68%	3,715	5,407,033	9,214,250
John N Given Public School	S1200026	58.38%	2,602	4,466,152	7,650,200
Wallaceburg District Secondary School	S1200063	57.94%	17,564	20,481,356	35,349,600
Chatham-Kent Secondary School	S1200056	57.69%	17,424	22,443,740	38,903,960
Alexander Mackenzie Secondary School	S1200052	57.19%	9,759	13,345,251	23,334,530
Queen Elizabeth II Public School - Chatham	S1200037	57.11%	3,961	4,903,814	8,586,870
South Plympton Public School	S1200068	56.02%	1,466	2,257,410	4,029,580
Merlin Area Public School	S1200035	54.76%	2,512	3,591,936	6,559,440
Wheatley Area Public School	S1200047	54.54%	3,077	4,326,516	7,933,000
Brigden Public School	S1200007	53.83%	2,332	3,564,584	6,622,510
Lakeroad Public School	S1200030	53.36%	2,962	4,482,599	8,401,400
Kinnwood Central Public School	S1200049	52.97%	3,896	3,879,091	7,323,320
Bosanquet Central School	S1200005	52.96%	2,769	3,866,687	7,301,450
King George VI Public School - Chatham	S1200028	52.74%	2,640	3,909,730	7,413,520
Lambton Central Collegiate Vocational Institute	S1200057	52.16%	16,382	17,226,447	33,027,200
H.W. Burgess Public School	S1200020	50.80%	1,915	3,196,753	6,292,740
Hanna Memorial Public School	S1200021	50.58%	3,320	4,126,301	8,158,270
Thamesville Area Central School	S1200043	50.18%	1,737	2,767,549	5,515,620
Tilbury Area Public School	S1200044	50.06%	3,822	4,316,149	8,622,640
London Road Public School	S1200033	48.33%	2,600	3,094,448	6,402,800
Zone Township Central School	S1200050	47.90%	1,732	2,764,697	5,772,360
Queen Elizabeth II Public School - Sarnia	S1200038	46.80%	3,128	4,277,285	9,140,450
High Park Public School	S1200023	46.40%	4,161	5,296,719	11,414,950
Northern Collegiate Institute and Vocational	S1200002	45.39%	17,916	17,070,279	37,608,850
McNaughton Ave Public School	S1200034	44.59%	5,754	6,945,459	15,577,530

School Name	School ID	10 Year Facility Condition Index (FCI)	Gross Floor Area - m <sup>2</sup>	Total Cost of Facility Work - 10 year period (\$)	Facility Replacement Value (\$)
Brooke Central School	S1200009	44.24%	4,104	3,715,763	8,399,600
Aberarder Central School	S1200004	43.92%	1,696	2,446,023	5,568,650
King George VI Public School - Sarnia	S1200029	43.20%	2,864	3,497,145	8,094,850
Wyoming Public School	S1200066	43.18%	1,964	2,516,702	5,827,870
Confederation Central School	S1200011	42.88%	2,331	2,873,501	6,700,610
Gregory Drive Public School	S1200019	41.83%	3,153	3,450,402	8,249,060
Naahii Ridge Public School	S1200024	41.76%	3,944	3,775,485	9,040,390
St Clair Secondary School	S1200061	41.51%	14,049	13,658,364	32,899,870
Errol Village Public School	S1200016	41.28%	1,872	2,194,709	5,316,800
Lansdowne Public School	S1200032	40.43%	3,234	3,403,937	8,420,040
Bright's Grove Elementary School	S1200008	39.97%	3,664	3,241,987	8,110,650
Dawn-Euphemia School	S1200013	39.10%	1,958	2,375,162	6,074,330
Lambton Central Centennial School	S1200031	36.78%	3,078	2,854,890	7,762,500
Rosedale Public School	S1200041	36.66%	3,581	3,717,584	10,139,640
Hillcrest Public School	S1200067	36.24%	2,240	2,203,615	6,079,840
P. E. McGibbon Public School	S1200027	29.32%	4,487	3,198,828	10,909,060
Grand Bend Public School	S1200018	17.87%	2,707	1,087,216	6,084,230

TOTALS:

57.09%

\$ 436,700,739 \$ 764,909,620

## CLASSROOMS REDUCTIONS

A total of 198 classrooms were closed for financial savings to offset the loss of provincial operational funding in 2015/2016 and 2016/2017 school year. The LKDSB estimates an annual savings of \$3,000 per classroom closed. These savings are achieved through the reduction in custodial staff hours and the reduction of supplies and utility costs. A number of factors were considered when determining which classrooms were to be closed. This included school capacity, available spaces, and program needs specific to the school.

Elementary School	Capacity Sept 14 2016	Enrolment Sept 14 2016	% Full Sept 14 2016	# of Classrooms Sept 14 2016	# of Classroom Closed Sept 14 2016
A.A. Wright Public School, Wallaceburg	268	278	104%	13	2
Aberarder Central School, Camlachie	199	114	57%	9	1
Bosanquet Central School, Thedford	328	184	56%	14	5
Bridgeview Public School, Point Edward	277	175	63%	11	2
Brigden Central School	305	211	69%	13	2
Bright's Grove Public School	378	340	90%	15	1
Brooke Central School, Alvinston	386	274	71%	16	3
Colonel Cameron Public School, Corunna	340	200	59%	14	5
Confederation Central School, Sarnia	305	223	73%	13	4
Dawn-Euphemia Public School	256	127	50%	11	4
Dresden Area Central School	446	360	81%	19	1
East Lambton Elementary School, Watford	351	212	60%	15	7
Gregory Drive Public School, Chatham	374	266	71%	16	3
H.W. Burgess Public School, Wallaceburg	271	173	64%	11	2
Hanna Memorial Public School, Sarnia	383	201	52%	16	5
Harwich Raleigh Public School, Blenheim	581	400	69%	25	5
High Park Public School, Sarnia	553	390	71%	23	2
Naahii Ridge Public School, Ridgetown	375	266	71%	15	1
Indian Creek Road Public School, Chatham	643	520	81%	26	2
John N. Given Public School, Chatham	351	249	71%	15	2
King George VI Public School, Sarnia	374	277	74%	16	2
Kinnwood Central Public School, Forest	331	278	84%	14	4
Lakeroad Public School, Sarnia	394	153	39%	17	5
Lambton Centennial Public School, Petrolia	337	199	59%	15	5
London Road Public School, Sarnia	282	172	61%	12	2
Merlin Area Public School	328	178	54%	14	4
Mooretown-Courtright Public School	256	99	39%	11	4
Queen Elizabeth II Public School, Chatham	442	317	72%	17	2
Queen Elizabeth II Public School, Petrolia	397	347	87%	17	1
Queen Elizabeth II Public School, Sarnia	475	270	57%	20	4
Riverview Central School, Port Lambton	268	160	60%	11	4
Tecumseh Public School, Chatham	557	344	62%	22	5

Elementary School	Capacity Sept 14 2016	Enrolment Sept 14 2016	% Full Sept 14 2016	# of Classrooms Sept 14 2016	# of Classroom Closed Sept 14 2016
Thamesville Area Central School	199	138	69%	8	3
Tilbury Area Public School	470	386	82%	19	2
Victor Lauriston Public School,	533	351	66%	22	2
W. J. Baird Public School, Blenheim	291	189	65%	12	2
Wheatley Area Public School	337	186	55%	14	5
Winston Churchill Public School,	374	247	66%	16	3
Zone Township Central School,	219	132	60%	9	2

Secondary Schools	Capacity	Enrolment Sept 14 2016	% Full Sept 14 2016	# of Classrooms Sept 14 2016	# of Classrooms Closed Sept 14 2016
Alexander Mackenzie Secondary School, Sarnia	681	425	62%	37	3
Blenheim District High School	747	313	42%	34	14
Chatham Kent Secondary School	1407	1164	83%	65	6
John McGregor Secondary School, Chatham	921	601	65%	42	6
Lambton Central Collegiate & Vocational Institute, Petrolia	1164	780	67%	52	7
Lambton Kent Composite School, Dresden	756	298	39%	36	12
North Lambton Secondary School, Forest	822	547	67%	37	5
Northern Collegiate Institute and Vocational School, Sarnia	1341	1066	79%	63	4
Ridgetown District High School★	474	202	43%	26	7
Tilbury District High School	516	388	75%	24	6
Wallaceburg District Secondary School★	1161	623	54%	60	8

★Excludes Grade 7 and 8 Students

## CRITERIA TO CONSIDER FOR COMMUNITY PARTNERSHIPS

The LKDSB continues to have discussions with municipalities in regard to underutilized school space as it is important for the LKDSB to explore options to address these situations. The data included in the Capital Plan will be part of the information used to inform any potential recommendations brought to the LKDSB Board of Trustees. The Data presented below includes present information about our schools that have the lowest capacity percentage. It also shows the amount of funding that will be lost from the LKDSB by 2018 due to the Ministry of Education's decision to end their previous delivery of top-up funding to school boards for underutilized schools. The following factors can be seen as indicators for schools that are in need of partnerships to alleviate low school capacities.

**Capacity –** The capacity of a school is determined by the Ministry of Education by loading all instructional spaces within the facility to current Ministry standards for class size requirements and room areas. This refers to the total percentage of space used in a school. It is calculated using the total number of students the Ontario Ministry of Education has deemed are able to be accommodated in the school and divided by the total number of students that are currently enrolled there. As stated earlier the Ministry has suggested a start point of 60% in terms of Community Partnerships but the more schools that are above this threshold the greater the efficiency there is in

the LKDSB.

**Facility Condition Index (FCI)** – The FCI is the Ministry of Education’s Condition Assessment Program. The Ministry assess all schools in all 72 school boards over a five year timeframe assessment cycle. There is no common assessment year for all schools in a single school board. The Ministry’s assessments provide the FCI which is a building condition determined by calculating the ratio between the five year renewal needs and the replacement value for each facility. The LKDSB also calculates a ten year FCI using Ministry data for planning purposes and determining annual capital projects for all LKDSB Schools.

**Enrolment** – This refers to the number of students enrolled at a school during a particular year. Funds are provided to all school boards for each student enrolled. Therefore a decrease in student population will mean a decrease in funding for the LKDSB. The Ministry annually calculates the Grants for Student Needs funding based on the Average Daily Enrolment (ADE) as of October 31 and March 31 of the school year.

**Proximity to Neighbouring Schools** – This refers to the distance in kilometres to the nearest elementary or secondary school respectively. Previously, schools with a ‘0’ as the second character in their postal code were designated as rural schools. The new model looks at proximity to the nearest same-board school (10 km. elementary/20 km. secondary) when determining Top Up model funding.

**School Operations Top-Up Funding** – Historically, the Ministry has provided funds for school boards to operate schools that were under capacity. Over the next two years, the Ministry will complete the phase out of the existing formula and replace it with a new one. Funding will be based on enrolment and distance to nearest same-board school.

It is a priority of the LKDSB to offer programs that support student learning and meet the needs of our students as they progress towards earning an Ontario Secondary School Diploma, or an Ontario Secondary School Certificate. Our goal is to ensure we provide our students and our families with the greatest opportunity for success while still maintaining efficient use of funding. No partnerships can impede the delivery of programs in schools or jeopardize student safety.

The Ministry Community Planning and Partnerships Guideline March 2015 states that *as a starting point, boards should review facilities that have been 60 percent utilized or less for two years and/or have 200 or more unused pupil places, and then should extend their review to other potentially suitable facilities.*

Based on these criteria the following schools meet the criteria for community partnerships.

**Schools for Potential Community Partnerships - Elementary**

Elementary School	Capacity	FCI (5)	FCI (10)	Enrolment	Neighbouring Schools (km)
East Lambton Elementary	60%	60.15	72.7	212	Brooke (12.7), Wyoming (21.2), Kinnwood (25.4)
Riverview Central School	60%	62.2	63.11	160	A.A. Wright (16.9), Mooretown (18.7), H.W. Burgess (23.3)
Zone Township	60%	27.16	47.9	132	Thamesville (14.6), Dresden (18.5), Dawn (27.8)
Colonel Cameron Public	59%	55.88	81.95	200	Sir John Moore (1.5), Mooretown (6.8)
Lambton Centennial Public School	59%	31.17	36.78	199	Queen Elizabeth II-P (7.4), Dawn (16.7), Brigden (18.7)
Wyoming Public School	59%	38.04	43.18	120	South Plympton (1.9), Queen Elizabeth II-P (10.2), Lambton Central Centennial (10.6)
Aberarder Central School	57%	39.1	43.92	114	Errol Village (8.9), Kinnwood (13.2)

Elementary School	Capacity	FCI (5)	FCI (10)	Enrolment	Neighbouring Schools (km)
Queen Elizabeth II Public School, Sarnia	57%	43.71	46.8	270	Lansdowne (<1.0), High Park (1.6), P.E. McGibbon (2.0), Hanna Memorial (2.2)
Bosanquet Central School	56%	46.53	52.96	184	Kinnwood (18.4), Grand Bend (22.0)
Wheatley Area Public School	55%	43.58	54.54	186	Tilbury Area (18.7), Merlin (32.7)
Merlin Area Public School	54%	52.13	54.76	178	Tilbury Area (17.4), Wheatley (32.7)
Hanna Memorial Public School	52%	35.56	50.58	201	London Road (1.1), P.E. McGibbon (1.2), Queen Elizabeth II-S (2.2)
Dawn-Euphemia Public School	50%	33.28	39.1	127	Lambton Central Centennial (16.7), Dresden Area (18.2), Zone (27.8)
Lakeroad Public School	39%	53.35	53.36	153	Errol Road (1.1), Cathcart (1.4), King George VI-S (2.1)
Mooretown-Courtright Public School	39%	63.37	71.92	99	Sir John Moore (5.5), Colonel Cameron (6.8), Brigden (17.8)

### Schools for Potential Community Partnerships - Secondary

Secondary School	Capacity	FCI (5)	FCI (10)	Enrolment	Neighbouring Schools (km)
WDSS	54%	43.97	57.94	623	LKCS (18.4), CKSS (27.4)
RDHS	43%	52.4	61.06	202	BDHS (16.9), JMSS (33.4), LKCS (35.2)
BDHS	42%	48.2	70.79	313	RDHS (16.9), JMSS (18.0)
LKCS	39%	72.73	72.82	298	WDSS (18.4), CKSS (26.2), RDHS (35.2), LCCVI (37.6)

AMSS	Alexander Mackenzie Secondary School	LKCS	Lambton Kent Composite School
BDHS	Blenheim District High School	NLSS	North Lambton Secondary School
CKSS	Chatham Kent Secondary School	NCIVS	Northern Collegiate Institute and Vocational School
GLSS	Great Lakes Secondary School	RDHS	Ridgetown District High School
JMSS	John McGregor Secondary School	TDHS	Tilbury District High School
LCCVI	Lambton Central Collegiate & Vocational Institute	WDSS	Wallaceburg District Secondary School

### Schools for Potential Community Partnerships - Funding Loss for Schools in the 60% to 65% Range for Capacity

School	Capacity	FCI (5)	FCI (10)	Enrolment	Neighbouring Schools (km)
JMSS	65%	63.49	79.53	601	CKSS (5.6), BDHS (18.0)
W.J. Baird Public School	65%	62.62	81.09	189	Harwich Raleigh (<1.0), Naahii Ridge (17.7), Indian Creek (18.6)
H. W. Burgess Public School	64%	44.42	50.8	173	WDSS 7/8 (1.9), A.A. Wright (2.9)
Bridgeview Public School	63%	54.8	68.63	175	King George Sarnia (2.5), London Road (2.7), Errol Road (3.4), Hanna Memorial (3.8)
AMSS	62%	48.15	57.19	425	NCIVS (2.4), GLSS (6.3)
Tecumseh Public School	62%	58.9	67.71	344	John N. Given (<1.0), King George VI-C (2.0), Gregory Drive (2.2)
London Road Public School	61%	46.82	48.33	172	Hanna Memorial (1.1), Bridgeview (2.7), King George Sarnia (3.6), Errol Road (4.3)

Note: The loss of School Top-Up Funding is provided by grant for the LKDSB as a whole. The loss of funding impacts the following grants:

Grant Name	2016-17 Funding Reduction
School Facility Operations and Renewal - Top Up Funding	\$1,305,433
School Foundation	30,718
Geographic Circumstances	79,100
Declining Enrolment	48,627
Total:	\$1,463,878