

SCHOOL INFORMATION PROFILE

Name of School: Wyoming Public School

Date: January 15, 2016

Page 1

Facility Profile

- Site plan and floor plan(s) (or space template) of the school with the date of school construction and any subsequent additions.

Site plan (page 8) and floor plan (page 9) are attached.

Date of construction and subsequent additions: 1965, 1972, 1976

- School attendance area (boundary) map

Map is attached (page 10).

- Context map (or air photo) of the school indicating the existing land uses surrounding the school.

Map is attached (page 11).

- Planning map of the school with zoning, Official Plan or secondary plan land use designations.

Map is attached (page 13).
Legal Description: 2008-Conc 2, EPT Lot 15

- Size of the school site (acres or hectares)

2.43 HA
6.00453 Acres

- Building area (square feet or square metres).

1,964 sq.m.
21,141 sq.ft.

- Number of portable classrooms.

0

SCHOOL INFORMATION PROFILE

Name of School: Wyoming Public School

Date: January 15, 2016

Page 2

o Number and type of instructional rooms as well as specialized classroom teaching spaces (e.g., science lab, tech shop, gymnasium, etc.).

- 1 gymnasium
- 5 regular classrooms
- 1 ALLP classroom
- 1 Library/Computer Lab
- 1 Learning Commons (Science, Art, Music, Clubs, Drama)
- 1 French Room

o Area of hard surfaced outdoor play area and/or green space, the number of play fields, and the presence of outdoor facilities (e.g., tracks, courts for basketball, tennis, etc.).

- area of hard surface 19,150 sq.ft.
- green space 188,350 sq.ft.
- 3 soccer fields
- 1 basketball court
- 6 single basketball courts
- 2 baseball fields
- large Jr/Int climbers (3 yrs old)
- several tree shaded areas
- ALLP fenced play area
 - sandbox, parallel bars
- all tarmac needs to be replaced

o Ten-year history of major facility improvements (item and cost).

2007 - Mechanical/Electrical Upgrade (\$830,934)

2010 - Partial Roof Replacement (\$200,229)

2012 - Jr/Int climbers (\$35,660)

o Projected five-year facility renewal needs of school (item and cost).

See attached (page 14).

o Current Facility Condition Index (FCI) with a definition of what the index represents.

Facility Condition Index (FCI): 38.73%

Total Cost of Capital Events \$2,256,976

Asset Replacement Value \$5,827,870

SCHOOL INFORMATION PROFILE

Name of School: Wyoming Public School

Date: January 15, 2016

Page 3

o Student Distance to school

Distance (KMs)		
Minimum	Maximum	Average
0.19	46.11	4.99

o Student eligibility Percentage with morning and afternoon ride times

Students		Morning Ride (Minutes)			Afternoon Ride (Minutes)		
Percent Eligible	Percent Not Bused	Minimum	Maximum	Average	Minimum	Maximum	Average
37.9%	62.1%	4	61	24.28	13	60	33.62

o School utility costs (totals, per square foot, and per student).

- Total 2015 Utility Cost \$41,692

o Number of parking spaces on site at the school, an assessment of the adequacy of parking, and bus/car access and egress.

- 20 permanent parking spaces located along thorough fair — adequate for current staff
- temporary parking on bus pickup area in front of school during non-bus times
- before and after school pickup of students by parents is done on the road coming into school area

o Measures that the school board has identified and/or addressed for accessibility of the school for students, staff, and the public with disabilities (i.e., barrier-free).

- 4 wheelchair accessible washrooms
- need push button access to school (to be installed by February 2016)

o On-the-ground (OTG) capacity, and surplus/shortage of pupil places

On-the-ground (OTG) capacity: 219
October 31, 2015 enrolment: 128
Capacity utilization: 58.45%

SCHOOL INFORMATION PROFILE

Name of School: Wyoming Public School

Date: January 15, 2016

Page 4

Instructional Profile

- Describe the number and type of teaching staff, non-teaching staff, support staff, itinerant staff, and administrative staff at the school.

School Staff

- 1 shared Principal (1.0) and Vice Principal (0.5)
- 1 secretary (1.0)
- 5 classroom teachers
- 1 ALLP teacher
- 0.6 French teacher
- 0.7 Prep teacher
- 0.5 Resource teacher
- 0.15 Lib/Sys Op teacher
- 3.0 EA (Educational Assistant) support
- 5 hour yard supervisor

LKDSB Board Staff

- Itinerant Staff (Technical and Special Education Teams in one room)

Non LKDSB Staff

- Contract custodian (1 daytime and 1 evening)

- Describe the course and program offerings at the school.

- Grade 4 to 8 Regular Program
- Alternative Learning & Lifeskills Program (ALLP)

- Describe the specialized service offerings at the school (e.g., cooperative placements, guidance counseling, etc.).

- ALLP Program

SCHOOL INFORMATION PROFILE

Name of School: Wyoming Public School

Date: January 15, 2016

Page 5

- | |
|--|
| <ul style="list-style-type: none"> ○ Current grade configuration of the school (e.g., junior kindergarten to Grade 6, junior kindergarten to Grade 12, etc.). <ul style="list-style-type: none"> – Grade 4-8 |
| <ul style="list-style-type: none"> ○ Current grade organization of the school (e.g., number of combined grades, etc.). <ul style="list-style-type: none"> – grade 4 (24 students) – grade 5 (23 students) – grade 5/6 (4/22 students) – grade 6/7 (8/16 students) – grade 8 (24 students) – ALLP (10 students) |
| <ul style="list-style-type: none"> ○ Number of out of area students. <ul style="list-style-type: none"> – Two |
| <ul style="list-style-type: none"> ○ Utilization factor/classroom usage. <ul style="list-style-type: none"> – 5 regular classrooms – 1 ALLP classroom – 1 French room – 1 room used for Learning Commons – 1 room used for Itinerant Staff Offices – 1 room used for photocopy/book/work room – Total 10 “classroom size rooms” |
| <ul style="list-style-type: none"> ○ Summary of five previous years’ enrolment and 10-year enrolment projection by grade and program. <ul style="list-style-type: none"> – Enrolment history and projections are attached (page 12). |
| <ul style="list-style-type: none"> ○ Current extracurricular activities. <ul style="list-style-type: none"> – Cross Country – Soccer – Volleyball – Basketball – Track & Field – Craft Club – Caribou Math Club – Drama Club – Choir Club – Guitar Club |

SCHOOL INFORMATION PROFILE

Name of School: Wyoming Public School

Date: January 15, 2016

Page 6

Other School Use Profile

- Current non-school programs or services resident at or co-located with the school as well as any revenue from these non-school programs or services and whether or not it is at full cost recovery.
 - None
- Current facility partnerships as well as any revenue from the facility partnerships and whether or not it is at full cost recovery.
 - None
- Community use of the school as well as any revenue from the community use of the school and whether or not it is at full cost recovery.

These tables contain 2015-16 data as at January 11, 2016 from the CLASS school rental booking software. Data provided is a combination of historical data and projected data as follows:

September 1st 2015 – January 10th 2016 - historical data

January 11th 2016 – June 30th 2016 - projections based on current permits in the system

COMMUNITY USE OVERVIEW: Christian Service Centres of Canada run an after school Key Bible Club once a week in the school library.

PROJECTED SEPTEMBER 2015-JUNE 2016

SCHOOL RENTAL PERMITTED HOURS

Classroom	0
Gymnasium – Single	0
Library	25
TOTAL PERMITTED HOURS	25

PROJECTED SEPTEMBER 2015-JUNE 2016

SCHOOL RENTAL REVENUE

Paid by rental groups	\$0
Covered by the CUS grant	\$100
TOTAL REVENUE	\$100

SCHOOL INFORMATION PROFILE

Name of School: Wyoming Public School

Date: January 15, 2016

Page 7

- | |
|--|
| <ul style="list-style-type: none">○ Availability of before and after school programs or services (e.g., child care) as well as any revenue from the before and after school programs and whether or not it is at full cost recovery.<ul style="list-style-type: none">– No program |
| <ul style="list-style-type: none">○ Lease terms at the school as well as any revenue from the lease and whether or not it is at full cost recovery.<ul style="list-style-type: none">– No program |
| <ul style="list-style-type: none">○ Description of the school's suitability for facility partnerships.<ul style="list-style-type: none">– The school is currently suitable for facility partnerships |

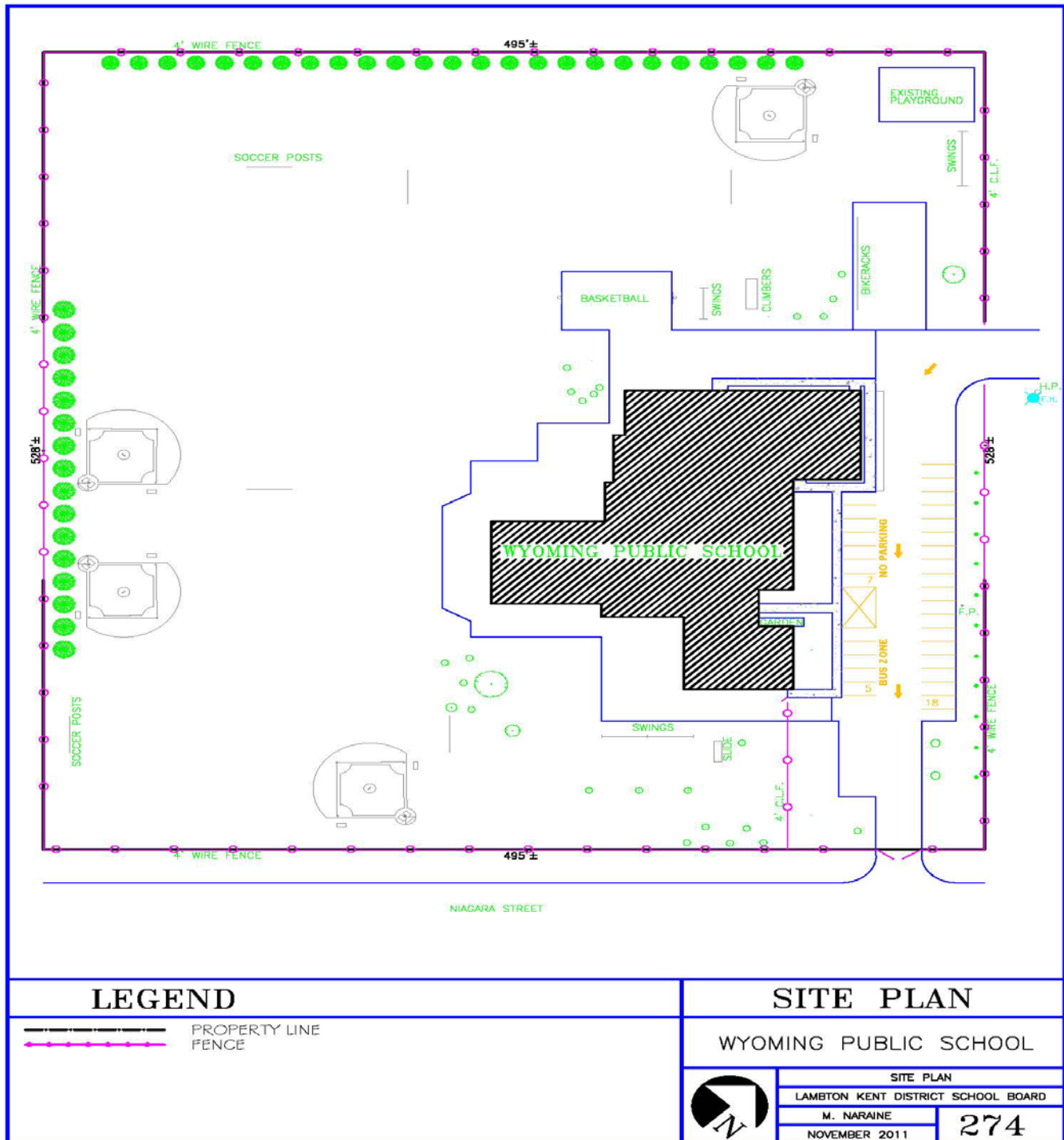
SCHOOL INFORMATION PROFILE

Name of School: Wyoming Public School

Date: January 15, 2016

Page 8

WYOMING PUBLIC SCHOOL SITE PLAN



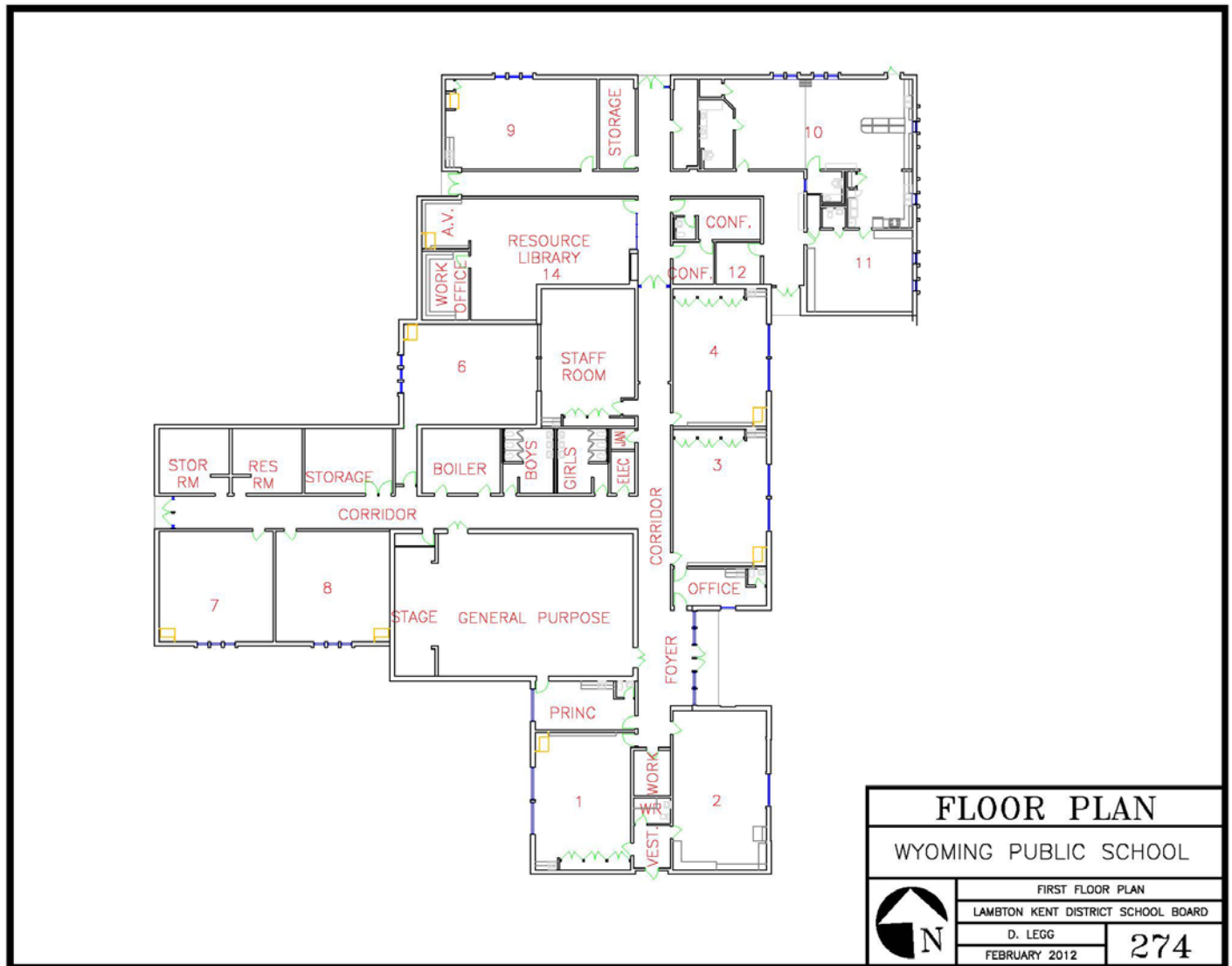
SCHOOL INFORMATION PROFILE

Name of School: Wyoming Public School

Date: January 15, 2016

Page 9

WYOMING PUBLIC SCHOOL FLOOR PLAN



FLOOR PLAN	
WYOMING PUBLIC SCHOOL	
FIRST FLOOR PLAN	
LAMBTON KENT DISTRICT SCHOOL BOARD	
D. LEGG	274
FEBRUARY 2012	

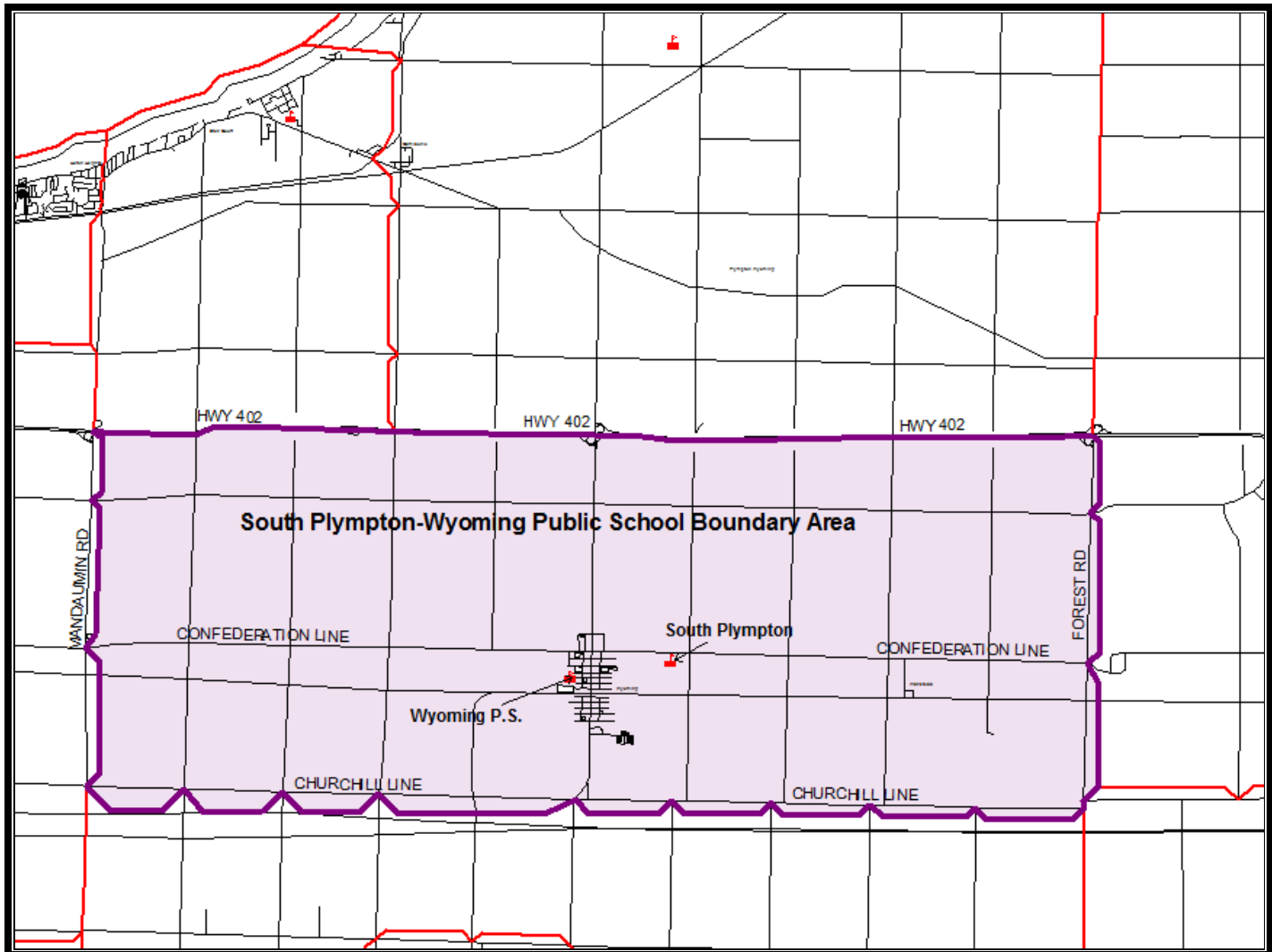
SCHOOL INFORMATION PROFILE

Name of School: Wyoming Public School

Date: January 15, 2016

Page 10

WYOMING PUBLIC SCHOOL BOUNDARY MAP



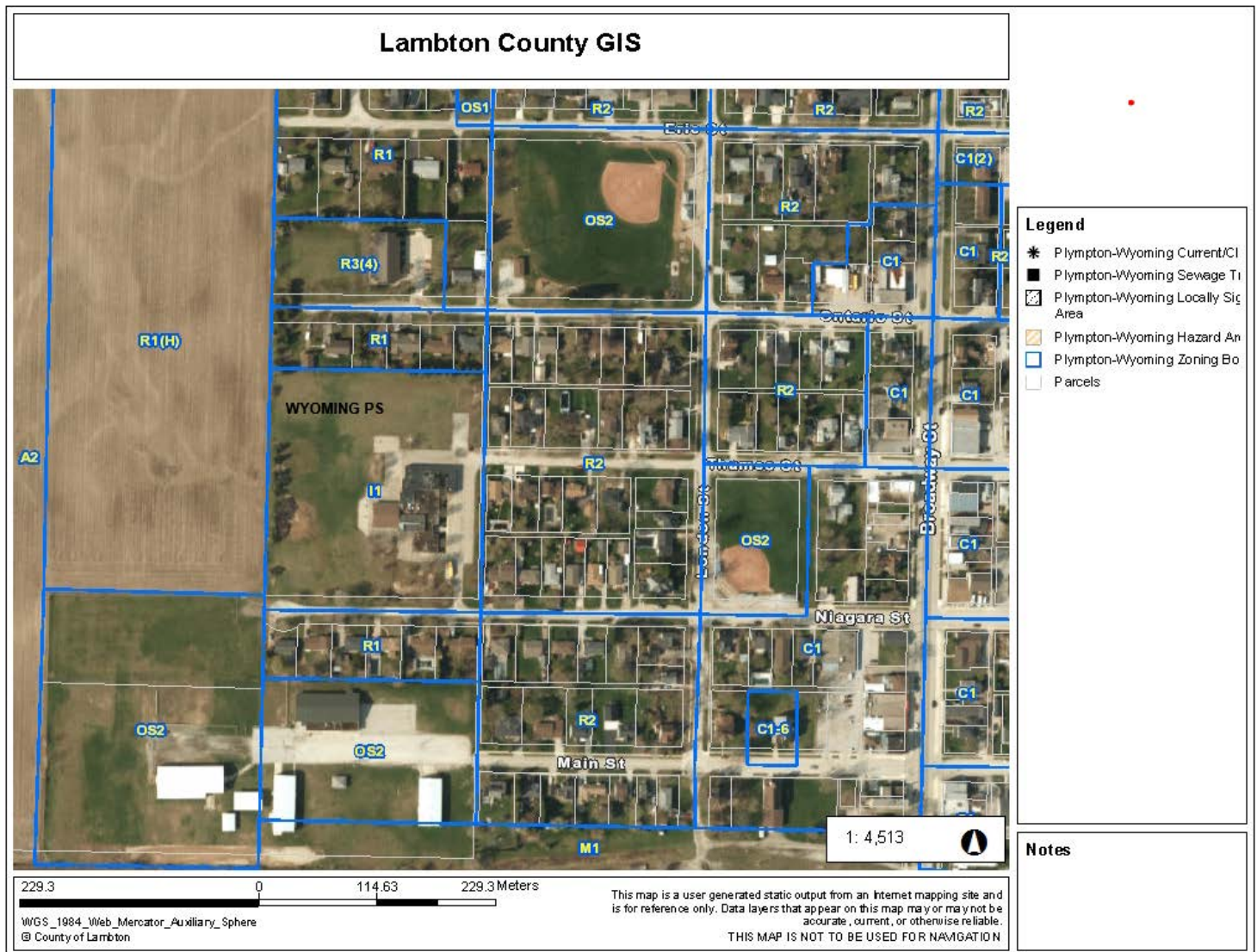
SCHOOL INFORMATION PROFILE

Name of School: Wyoming Public School

Date: January 15, 2016

Page 11

WYOMING PUBLIC SCHOOL AERIAL VIEW



SCHOOL INFORMATION PROFILE

Name of School: Wyoming Public School

Date: January 15, 2016

Page 12

WYOMING PUBLIC SCHOOL ENROLMENT HISTORY & PROJECTIONS

5 Year Enrolment History

Grade	2010	2011	2012	2013	2014
4	29	22	17	29	30
5	19	29	23	15	29
6	29	23	30	24	17
7	28	26	21	29	23
8	23	30	27	24	32
ALLP	16	14	16	14	9
Total	144	144	134	135	140

Enrolment Actual – October 31, 2015

Year	4	5	6	7	8	ALLP	Total
2015	24	27	29	15	23	10	128

10 Year Enrolment Projections

Grade	2016	2017	2018	2019	2020	2021	2022	2023	2024	2025
4	15	22	21	20	24	23	19	21	21	21
5	22	15	22	21	19	23	22	18	21	21
6	31	25	16	23	22	21	25	25	20	22
7	29	29	23	16	22	21	20	24	23	19
8	17	31	31	24	17	23	22	21	25	24
ALLP	9	9	9	9	9	9	9	9	9	9
Total	123	131	122	113	113	120	117	118	119	116

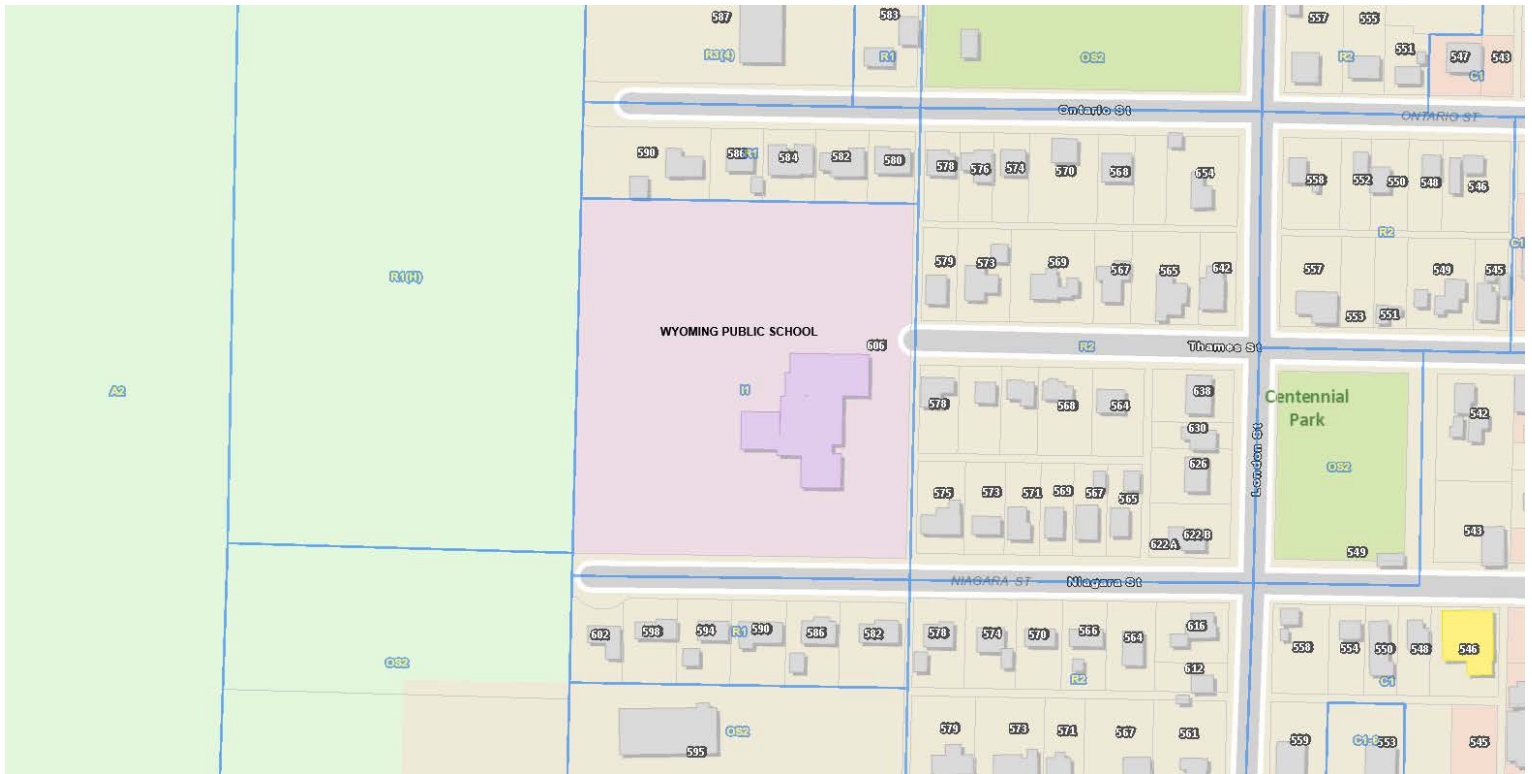
SCHOOL INFORMATION PROFILE

Name of School: Wyoming Public School

Date: January 15, 2016

Page 13

WYOMING PUBLIC SCHOOL ZONING MAP



SCHOOL INFORMATION PROFILE

Name of School: Wyoming Public School

Date: January 15, 2016

Page 14

WYOMING PUBLIC SCHOOL 5 YEAR FACILITY RENEWAL NEEDS

5 YEAR CAPITAL PROJECT REQUIREMENTS BROKEN DOWN BY CAPITAL CATEGORY

WYOMING

	2014	2015	2016	2017	2018	TOTALS
Substructure						-
Shell	555,828		94,212			650,040
Interiors	321,048		205,224			526,272
Services	249,522		112,653			362,175
Equipment & Furnishings						-
Special Construction & Demolition						-
Building Sitework	349,223		76,877			426,100
TOTAL:	1,475,621	-	488,966	-	-	1,964,587