

## **SCHOOL INFORMATION PROFILE**

*Name of School: South Plympton Public School*

*Date: January 15, 2016*

*Page 1*

### **Facility Profile**

- Site plan and floor plan(s) (or space template) of the school with the date of school construction and any subsequent additions.

Site plan (page 8) and floor plan (page 9) are attached.  
Date of construction and subsequent additions: 1962, 1994

- School attendance area (boundary) map

Map is attached (page 10).

- Context map (or air photo) of the school indicating the existing land uses surrounding the school.

Map is attached (page 11).

- Planning map of the school with zoning, Official Plan or secondary plan land use designations.

Map is attached (page 13).  
Legal Description: 2008-Conc 2, W PT Lot 18

- Size of the school site (acres or hectares)

3.04 HA  
7.51184 Acres

- Building area (square feet or square metres).

1,466 sq.m.  
15,780 sq.ft.

- Number of portable classrooms.

0

## SCHOOL INFORMATION PROFILE

*Name of School: South Plympton Public School*

*Date: January 15, 2016*

*Page 2*

○	<p>Number and type of instructional rooms as well as specialized classroom teaching spaces (e.g., science lab, tech shop, gymnasium, etc.).</p> <ul style="list-style-type: none"> <li>– 1 gymnasium</li> <li>– 3 regular classrooms</li> <li>– 2 JK/SK classrooms</li> <li>– 1 Library/Computer Lab</li> <li>– 1 French Room/JKSK Lunch Room</li> <li>– 1 Best Start</li> </ul>
○	<p>Area of hard surfaced outdoor play area and/or green space, the number of play fields, and the presence of outdoor facilities (e.g., tracks, courts for basketball, tennis, etc.).</p> <ul style="list-style-type: none"> <li>– area of hard surface 15,330 sq.ft.</li> <li>– green space 203,700 sq.ft.</li> <li>– 1 soccer field</li> <li>– 1 baseball field</li> <li>– 2 single basketball courts</li> <li>– 2 funnel ball</li> <li>– Primary wooden climber</li> <li>– spider climber</li> <li>– truck climber</li> <li>– sand box</li> <li>– JK/SK shed</li> <li>– new tarmac 2014</li> <li>– Best Start fenced play area (bicycle track, cement block shed)</li> </ul>
○	<p>Ten-year history of major facility improvements (item and cost).</p> <p>2005 - Structural Reinforcing (\$83,911)          2007 - Boiler Replacement (\$145,101)          2012 - Window &amp; Door Replacement (\$137,000)          2012 - Toilet Replacement (\$4,000)          2012 - Climbers (Play truck &amp; Quad Arch) (\$12,500)          2013 - Asphalt Replacement (\$82,375)          2014 - Partial Roof Replacement (\$111,378)          2015 - Partial Roof Replacement (\$175,000)</p>
○	<p>Projected five-year facility renewal needs of school (item and cost).</p> <p>See attached (page 14).</p>
○	<p>Current Facility Condition Index (FCI) with a definition of what the index represents.</p> <p>Facility Condition Index (FCI): 59.04%          Total Cost of Capital Events \$2,379,219          Asset Replacement Value \$4,029,580</p>

## SCHOOL INFORMATION PROFILE

Name of School: *South Plympton Public School*

Date: *January 15, 2016*

Page 3

○ Student Distance to school

Distance (KMs)		
Minimum	Maximum	Average
0.4	13.21	3.55

○ Student eligibility Percentage with morning and afternoon ride times

Students		Morning Ride (Minutes)			Afternoon Ride (Minutes)		
Percent Eligible	Percent Not Bused	Minimum	Maximum	Average	Minimum	Maximum	Average
100.0%	0.0%	2	64	16.51	2	41	11.71

○ School utility costs (totals, per square foot, and per student).

- Total 2015 Utility Cost \$23,494

○ Number of parking spaces on site at the school, an assessment of the adequacy of parking, and bus/car access and egress.

- 20 permanent parking spaces — adequate for current staff
- 1 entrance and 1 exit

○ Measures that the school board has identified and/or addressed for accessibility of the school for students, staff, and the public with disabilities (i.e., barrier-free).

- No wheelchair accessible washroom
- Need push button access to school

○ On-the-ground (OTG) capacity, and surplus/shortage of pupil places

On-the-ground (OTG) capacity: 144  
October 31, 2015 enrolment: 115  
Capacity utilization: 79.86%

## SCHOOL INFORMATION PROFILE

Name of School: *South Plympton Public School*

Date: *January 15, 2016*

Page 4

### Instructional Profile

- Describe the number and type of teaching staff, non-teaching staff, support staff, itinerant staff, and administrative staff at the school.

#### School Staff

- 1 shared Principal (1.0) and 1 Vice Principal (0.5)
- 1 secretary (1.0)
- 3 classroom teachers
- 2 JK/SK teachers
- 0.4 French/Prep teacher
- 0.3 Prep teacher
- 0.3 Resource teacher
- 0.15 Lib/Sys Op/Prep teacher
- 2 ECEs (Early Childhood Educator) (2.0)
- 2 EAs (Educational Assistant) Support (2.0)
- 10 hour yard supervisor

#### Non LKDSB Staff

- Contract custodian (1 daytime)
- Best Start Staff

- Describe the course and program offerings at the school.

- Grade JK to 3 Regular Program

- Describe the specialized service offerings at the school (e.g., cooperative placements, guidance counseling, etc.).

- Best Start

- Current grade configuration of the school (e.g., junior kindergarten to Grade 6, junior kindergarten to Grade 12, etc.).

- Grade JK-3

## SCHOOL INFORMATION PROFILE

*Name of School: South Plympton Public School*

*Date: January 15, 2016*

*Page 5*

- |   |
|---|
| <ul style="list-style-type: none"><li>○ Current grade organization of the school (e.g., number of combined grades, etc.).<ul style="list-style-type: none"><li>– JK/SK (teacher &amp; ECE) (12/11 students)</li><li>– JK/SK (teacher &amp; ECE) (13/12 students)</li><li>– grade 1 (21 students)</li><li>– grade 1/2 (4/19 students)</li><li>– grade 2/3 (5/19 students)</li></ul></li></ul>        |
| <ul style="list-style-type: none"><li>○ Number of out of area students.<ul style="list-style-type: none"><li>– None</li></ul></li></ul>   |
| <ul style="list-style-type: none"><li>○ Utilization factor/classroom usage.<ul style="list-style-type: none"><li>– 1 room used for Best Start</li><li>– 2 JK/SK classrooms</li><li>– 3 regular classrooms</li><li>– 1 French/JKSK lunch room</li><li>– 1 room used as all purpose room (photocopy/custodial office/resource/work room)</li><li>– Total 8 “classroom size rooms”</li></ul></li></ul> |
| <ul style="list-style-type: none"><li>○ Summary of five previous years’ enrolment and 10-year enrolment projection by grade and program.<ul style="list-style-type: none"><li>– Enrolment history and projections are attached (page 12).</li></ul></li></ul>   |
| <ul style="list-style-type: none"><li>○ Current extracurricular activities.<ul style="list-style-type: none"><li>– Intramurals - seasonal</li></ul></li></ul>   |

## SCHOOL INFORMATION PROFILE

Name of School: *South Plympton Public School*

Date: *January 15, 2016*

Page 6

### Other School Use Profile

- Current non-school programs or services resident at or co-located with the school as well as any revenue from these non-school programs or services and whether or not it is at full cost recovery.

- None

- Current facility partnerships as well as any revenue from the facility partnerships and whether or not it is at full cost recovery.

- Best Start/Child Care at full cost recovery

- Community use of the school as well as any revenue from the community use of the school and whether or not it is at full cost recovery.

These tables contain 2015-16 data as at January 11, 2016 from the CLASS school rental booking software. Data provided is a combination of historical data and projected data as follows:

September 1<sup>st</sup> 2015 – January 10<sup>th</sup> 2016 - historical data

January 11<sup>th</sup> 2016 – June 30<sup>th</sup> 2016 - projections based on current permits in the system

**COMMUNITY USE OVERVIEW:** Christian Service Centres of Canada run an after school Key Bible Club once a week in the school library.

#### PROJECTED SEPTEMBER 2015-JUNE 2016

##### SCHOOL RENTAL PERMITTED HOURS

Classroom	0
Gymnasium – Single	0
Library	26
<b>TOTAL PERMITTED HOURS</b>	<b>26</b>

#### PROJECTED SEPTEMBER 2015-JUNE 2016

##### SCHOOL RENTAL REVENUE

Paid by rental groups	\$0
Covered by the CUS grant	\$104
<b>TOTAL REVENUE</b>	<b>\$104</b>

## **SCHOOL INFORMATION PROFILE**

*Name of School: South Plympton Public School*

*Date: January 15, 2016*

*Page 7*

- |   |
|---|
| <ul style="list-style-type: none"><li>○ Availability of before and after school programs or services (e.g., child care) as well as any revenue from the before and after school programs and whether or not it is at full cost recovery.<ul style="list-style-type: none"><li>– Before and After School Program at full cost recovery</li></ul></li></ul> |
| <ul style="list-style-type: none"><li>○ Lease terms at the school as well as any revenue from the lease and whether or not it is at full cost recovery.<ul style="list-style-type: none"><li>– There is no revenue from the lease</li></ul></li></ul>   |
| <ul style="list-style-type: none"><li>○ Description of the school's suitability for facility partnerships.<ul style="list-style-type: none"><li>– The school is currently suitable for facility partnerships</li></ul></li></ul>  |

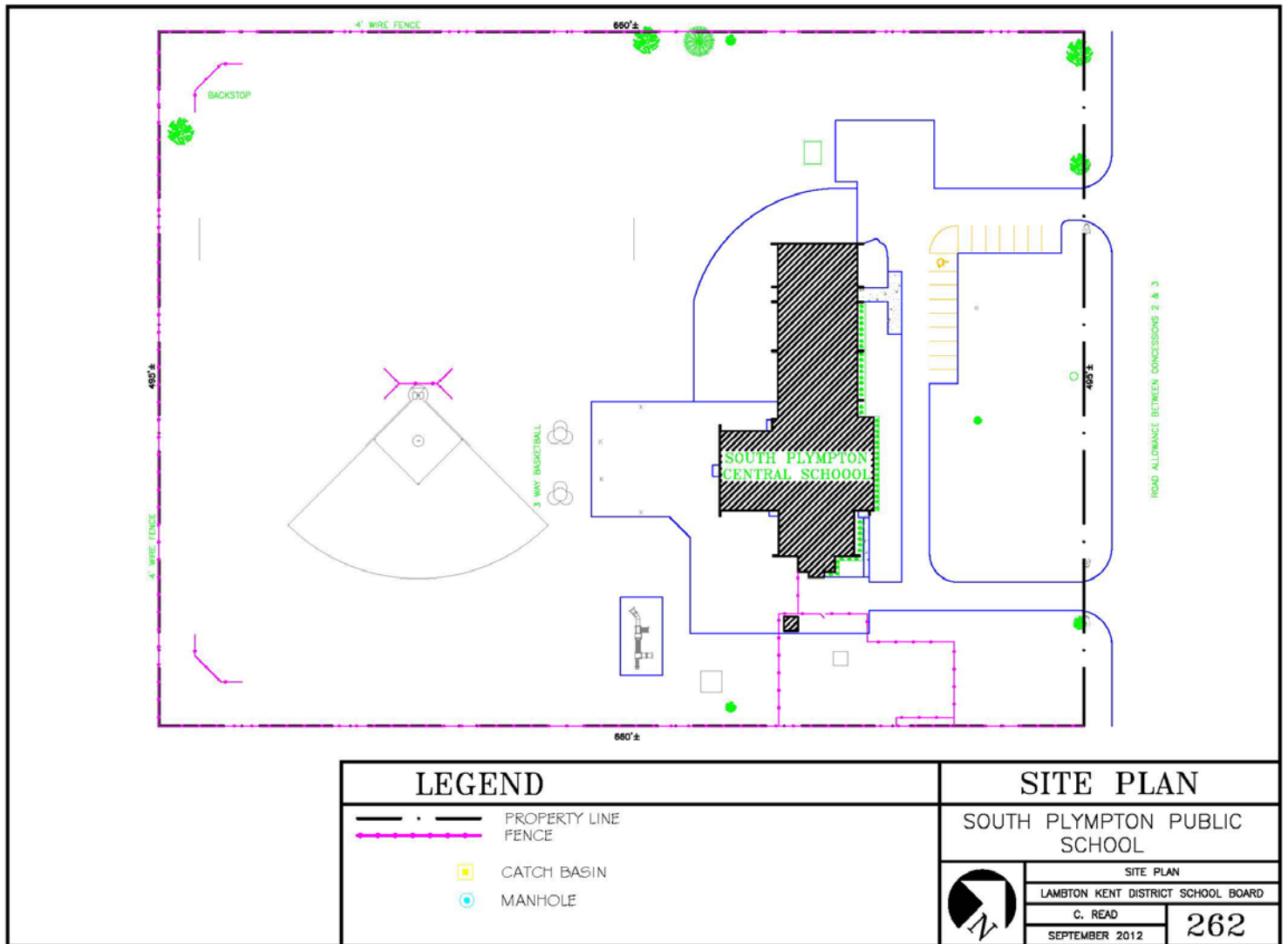
## SCHOOL INFORMATION PROFILE

Name of School: *South Plympton Public School*

Date: *January 15, 2016*

Page 8

### SOUTH PLYMPTON PUBLIC SCHOOL SITE PLAN





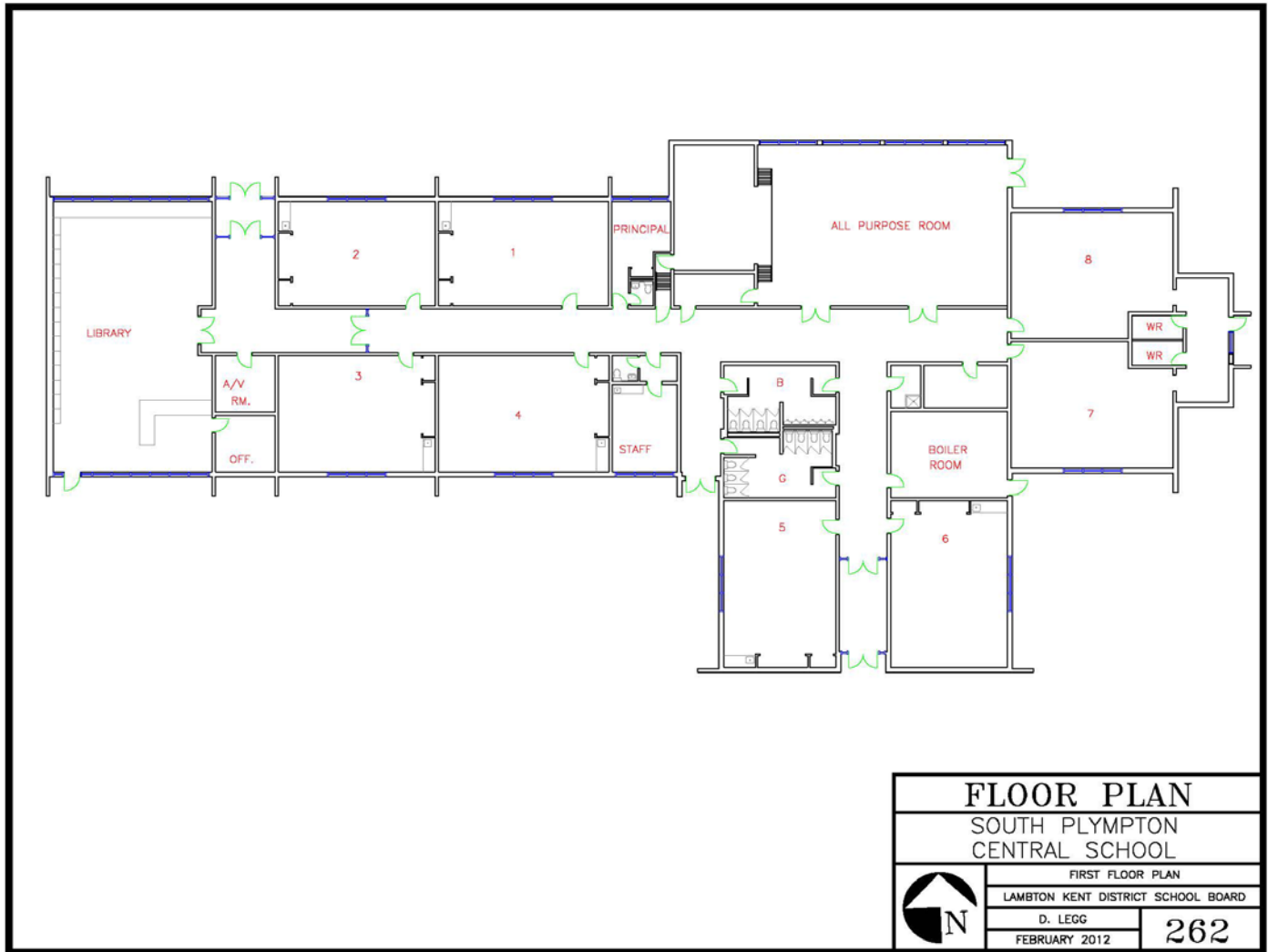
**SCHOOL INFORMATION PROFILE**

Name of School: *South Plympton Public School*

Date: *January 15, 2016*

Page 9

**SOUTH PLYMPTON PUBLIC SCHOOL FLOOR PLAN**



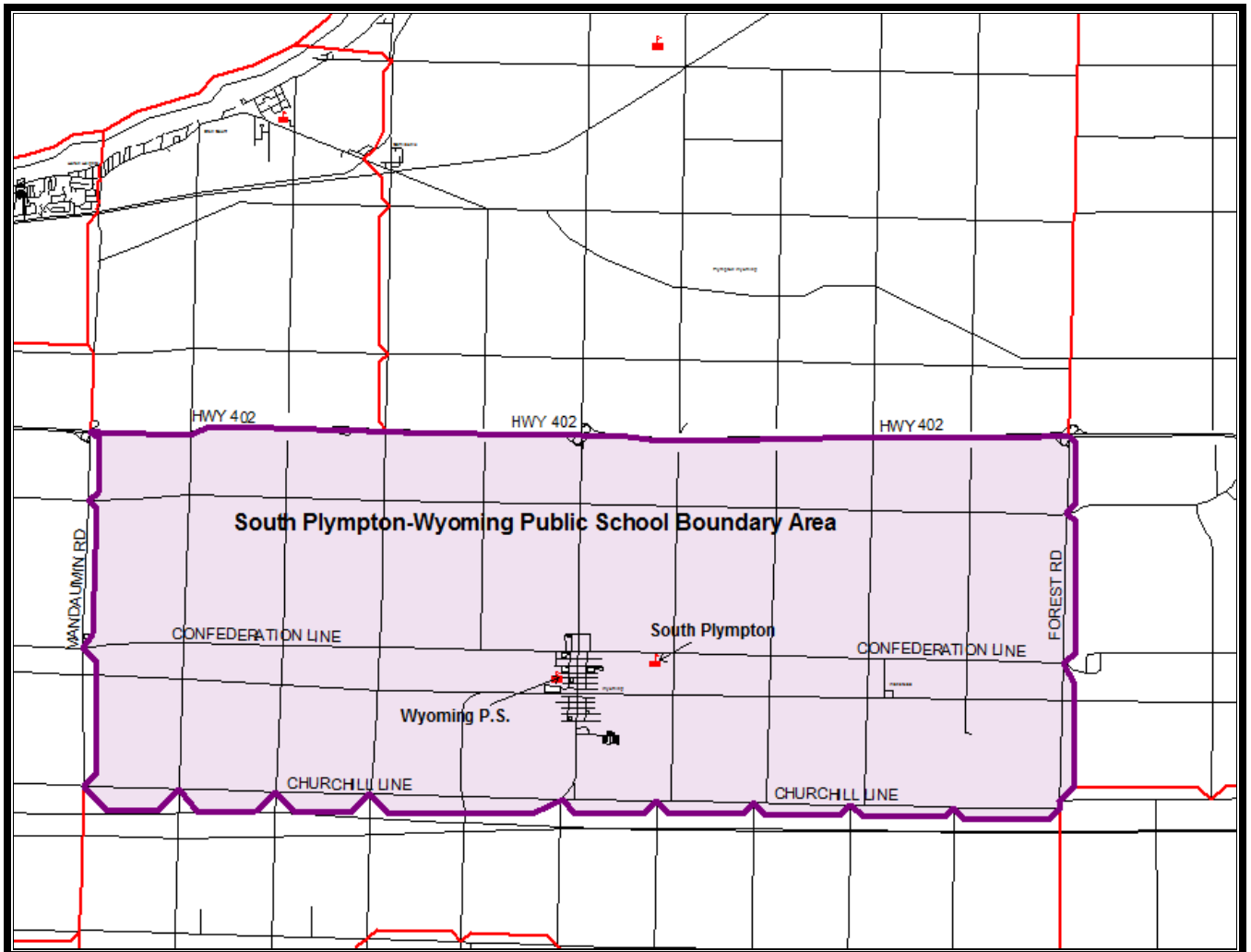
## SCHOOL INFORMATION PROFILE

Name of School: *South Plympton Public School*

Date: *January 15, 2016*

Page 10

### SOUTH PLYMPTON PUBLIC SCHOOL BOUNDARY MAP



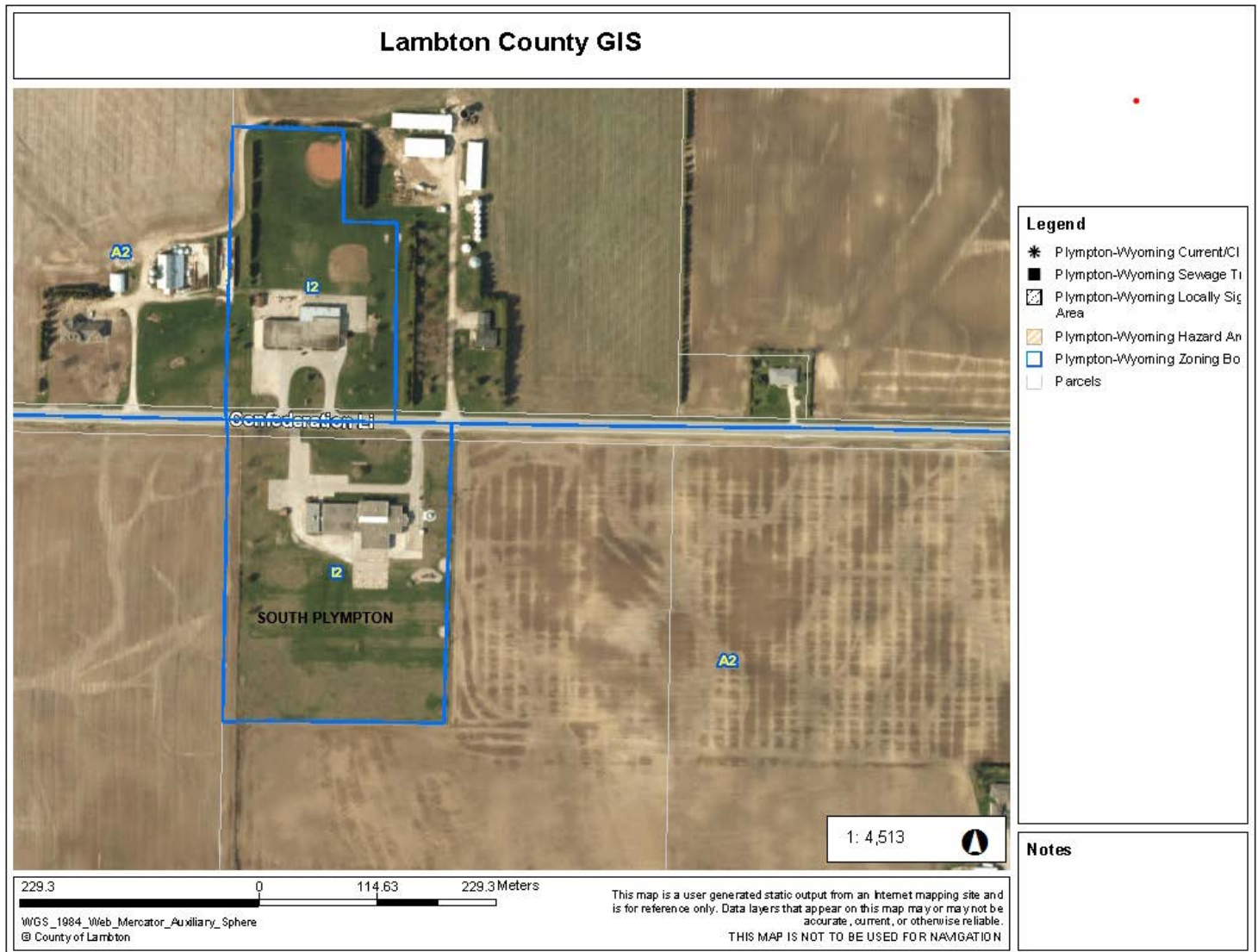
## SCHOOL INFORMATION PROFILE

Name of School: *South Plympton Public School*

Date: *January 15, 2016*

Page 11

### SOUTH PLYMPTON PUBLIC SCHOOL AERIAL VIEW



## **SCHOOL INFORMATION PROFILE**

Name of School: *South Plympton Public School*

Date: *January 15, 2016*

Page 12

### **SOUTH PLYMPTON PUBLIC SCHOOL ENROLMENT HISTORY & PROJECTIONS**

#### **5 Year Enrolment History**

Grade	2010	2011	2012	2013	2014
JK	21	17	26	22	19
K	25	24	16	25	23
1	26	27	27	16	23
2	15	29	28	24	16
3	20	17	30	29	24
Total	107	114	127	116	105

#### **Enrolment Actual – October 31, 2015**

Year	JK	K	1	2	3	Total
2015	25	23	25	23	19	115

#### **10 Year Enrolment Projections**

Grade	2016	2017	2018	2019	2020	2021	2022	2023	2024	2025
JK	22	18	20	20	20	20	20	20	20	20
K	24	23	18	21	21	21	21	22	22	22
1	20	24	23	19	21	21	21	21	22	22
2	22	20	24	23	19	21	21	21	21	22
3	22	22	20	24	23	19	21	21	21	21
Total	110	107	105	107	104	102	104	105	106	107

## SCHOOL INFORMATION PROFILE

Name of School: *South Plympton Public School*

Date: *January 15, 2016*

Page 13

### SOUTH PLYMPTON PUBLIC SCHOOL ZONING MAP



## SCHOOL INFORMATION PROFILE

Name of School: *South Plympton Public School*

Date: *January 15, 2016*

Page 14

### SOUTH PLYMPTON PUBLIC SCHOOL 5 YEAR FACILITY RENEWAL NEEDS

#### 5 YEAR CAPITAL PROJECT REQUIREMENTS BROKEN DOWN BY CAPITAL CATEGORY

##### SOUTH PLYMPTON

	2014	2015	2016	2017	2018	TOTALS
Substructure						-
Shell	235,060					235,060
Interiors	392,028		119,412	7,721		519,161
Services	1,128,036	21,840		27,037		1,176,913
Equipment & Furnishings						-
Special Construction & Demolition						-
Building Sitework	331,474		81,110			412,584
<b>TOTAL:</b>	<b>2,086,598</b>	<b>21,840</b>	<b>200,522</b>	<b>34,758</b>	<b>-</b>	<b>2,343,718</b>