

**REGULAR BOARD, PUBLIC SESSION
REPORT TO BOARD**

**FROM: Jim Costello, Director of Education
Gary Girardi, Superintendent of Capital Planning and Accommodation
Brian McKay, Superintendent of Business**

DATE: April 26, 2016

SUBJECT: Final Staff Report on the Consolidation of South Plympton and Wyoming Public Schools

The purpose of this Final Staff Report on the Consolidation of South Plympton and Wyoming Public Schools is to provide Trustees with a summary of the Wyoming Area Schools Accommodation Review, information on the community consultation process and the final staff recommended option. The Accommodation Review process is still underway, with opportunities for public delegations at the May 10, 2016 Board Meeting. Any changes to the Final Staff Report, as a result of public delegations, will be included as an addendum to the Final Staff Report on the Consolidation of South Plympton and Wyoming Public Schools which will be presented to Trustees for approval at the May 24, 2016 Board Meeting.

A. Background

The Lambton Kent District School Board (LKDSB) strives to provide educational programs and services of the highest quality. This is best accomplished when facilities are conducive to creating a stimulating learning environment designed to meet the needs of all pupils within fiscal parameters. In addition to facilitating the delivery of the LKDSB Mission, the LKDSB will endeavor to optimize the use of facilities. Various factors beyond the control of the LKDSB impact this commitment. These factors include declining enrolment, demographics, current funding and operational realities, new provincial legislation and policy, changing educational objectives and physical limitations of buildings.

In March 2015, the Ministry of Education released a new Pupil Accommodation Review Guideline and a new Community Planning and Partnerships Guideline. As a result, in June 2015, the Board updated its policies and regulations on Pupil Accommodation and Community Planning and Partnerships to reflect the new Ministry Guidelines. In accordance with these guidelines, the LKDSB held a Special Board Meeting on October 6, 2015 to which all agencies on the LKDSB entities list, as outlined in the LKDSB Regulation No: R-BU-529, were invited. The purpose of the Special Board Meeting was to present the LKDSB Capital Plan, share information on funding changes and investigate partnerships to find alternative plans to utilize unused pupil spaces in schools with low enrolment from both the municipal sector and the business sector. To date, partnership offers have not been received from our municipal partners to utilize the unused pupil spaces.

The LKDSB Pupil Accommodation Report 2015/2016 and Initial Staff Report on the Consolidation of South Plympton and Wyoming Public Schools were presented to the Board in compliance with LKDSB Regulation No: R-AD-106 on November 24, 2015. The Report contained an eight phase accommodation proposal one of which was further outlined in the Initial Staff Report recommending the Consolidation of South Plympton and Wyoming Public Schools. Trustees voted to establish an Accommodation Review Committee for South Plympton and Wyoming Public Schools to study the Initial Staff Report recommendation for consolidation of South Plympton and Wyoming Public Schools at the Wyoming site.

A.1 Demographics/Declining Enrolment

School Facts

| | South Plympton | Wyoming |
|------------------------------|------------------------------|------------------------------|
| Property Size | 3.04 hectares (7.511 acres) | 2.43 hectares (6.004 acres) |
| Age and Size | Built in 1962 (1,466 sq. m.) | Built in 1965 (1,964 sq. m.) |
| Enrolment/Capacity Oct/31/15 | 115/144 = 79.86% | 128/219 = 58.45% |

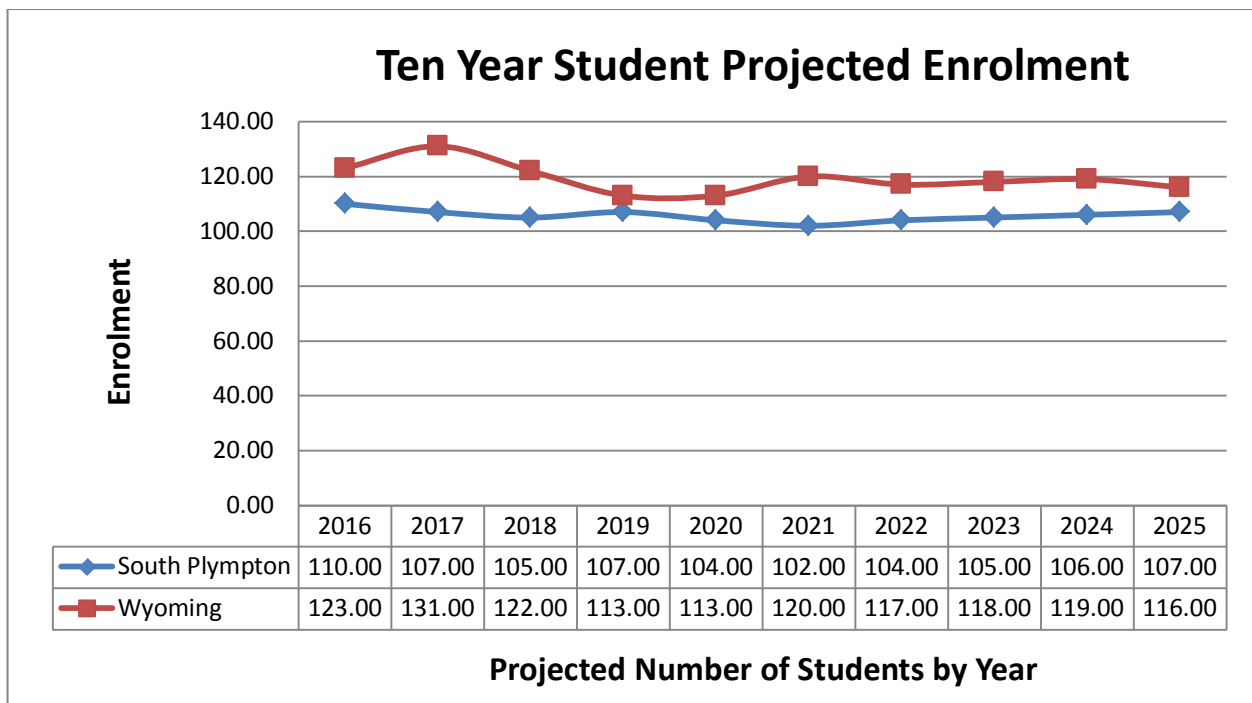
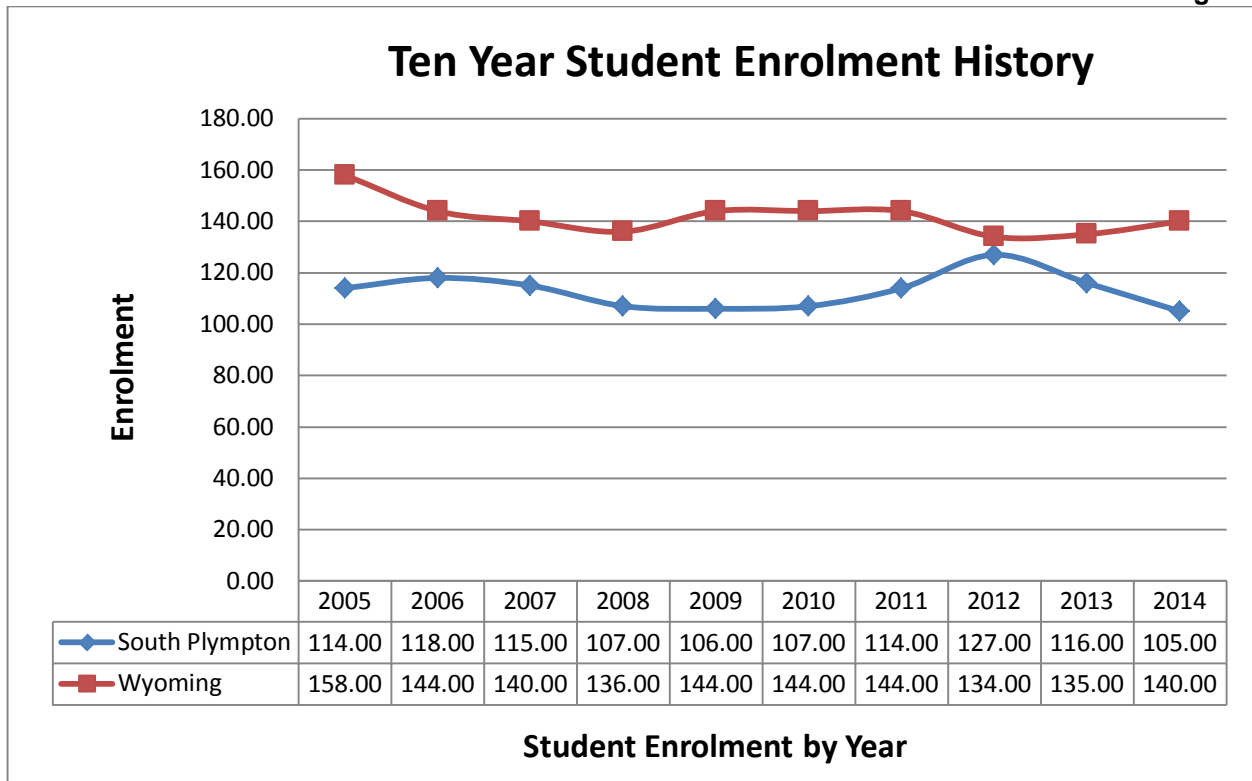
- At the time of amalgamation in October 1999 LKDSB had 29,399.6 FTE students
- As of October 31, 2015, the LKDSB has 22,078 Full Time Equivalent (FTE) students
- Since the time of amalgamation, this is a 25% reduction in student population at the LKDSB
- The Ontario Ministry of Education indicates the LKDSB has 9,426 Ministry rated empty pupil spaces as of October 31, 2015
- LKDSB current capacity utilization is 70.1%
- LKDSB projection of continued enrolment decline and capacity utilization: 21,480 FTE in 2020 (68.2%); 20,929 FTE in 2025 (66.4%); 20,446 FTE in 2029 (64.9%)
- Ministry of Education-London Region (South Western Ontario) rate of enrolment decline is 0.64% from 2014/2015 to 2015/2016 (3 times the provincial decline rate of 0.17%)
- LKDSB rate of enrolment decline is 1.6% from 2014/2015 to 2015/2016 which is nine times that of the province

While Statistics Canada predicts that the birth rate in Ontario will increase from 2010 to 2025, Lambton County and the Municipality of Chatham-Kent birth rates and the projected student population are expected to decrease. This anticipated decline will occur more slowly than the current pace. This Statistics Canada data is supported by the Board’s demographic software and is also reflected in the demographic information supplied to the Board by the Municipality of Chatham-Kent and the County of Lambton prior to the Board’s Capital Plan Meeting in October 2015.

In October of 2015 the County of Lambton provided demographic data for the Town of Plympton-Wyoming. These projections were produced by the County of Lambton Planning and Development Services Department and the resulting total populations were adopted by the County Council for Land Use Planning Purposes. This 2011 census data estimates a total population of 7,576 for the Town of Plympton-Wyoming. Future year population projections are provided on the chart below. Please note that the County of Lambton adopted the use of the Reference Population Projection for their planning purposes.

| Year | Low Population Projection – Town of Plympton-Wyoming | Reference Population Projection – Town of Plympton-Wyoming | High Population Projection – Town of Plympton-Wyoming |
|------|---|---|--|
| 2016 | 7192 | 7448 | 7705 |
| 2021 | 6824 | 7308 | 7811 |
| 2026 | 6416 | 7115 | 7863 |

The decline in population for South Plympton and Wyoming Public Schools is outlined in the graphs below.



The County data and the LKDSB data indicate a similar trajectory. The LKDSB predicts that there will be a slight enrolment decrease. Consolidation of these schools, which are 1.9 km apart, will provide the ability to offer all Kindergarten to Grade 8 programs plus Before and After school programs in one building. This will eliminate the stress of transitioning to a new school in Grade 4 while improving cost efficiencies. The South Plympton Public School and Wyoming Public School combination is the only Kindergarten to Grade 8 school model in the LKDSB that has two building sites.

Wyoming and South Plympton – Proximity to Schools

- Total student population is 243 October 31, 2015
- Wyoming Public School – 167 students live within 1.6 km of Wyoming Public School
- South Plympton Public School – 74 students live within 1.6 km of South Plympton Public School

Wyoming Public School - of the 243 currently enrolled students, 167 or 68.7% live within 1.6 km of the School. This includes 70 students who currently live south of the railroad track.

South Plympton Public School - of the 243 currently enrolled students, 74 or 30.5% are within 1.6 km of the School. This includes 22 students who currently live south of the railroad track.

The majority of the students live in closer proximity to Wyoming Public School which will decrease busing costs.

Housing Development in the Town of Plympton-Wyoming

The Town of Plympton-Wyoming Planning Coordinator confirmed that a developer has a draft approval for 92 lots on the east side of Wyoming. Some of these lots would include row and/or townhouses marketed towards seniors and the development would be undertaken in phases according to the Town Planning Coordinator. As of the writing of this report, no date has been set for ground breaking.

Regarding the proposed 92 lots, the LKDSB demographics provider has a mechanism for determining enrolment increases for housing developments. Their data indicates that a housing development of 20 single units would create a student population increase of 8 students aged 5-12. Currently in the Plympton-Wyoming area the participation rate for students in the LKDSB is 55%. This would result in an approximate 4.4 student increase per 20 households in the LKDSB elementary school Kindergarten to Grade 8 population. In our frequently asked questions it was stated that if half of the proposed 92 lots were single family units, these 46 households would lead to an estimated population of 10.12 additional students from Kindergarten to Grade 8.

A.2 Financial

The LKDSB Pupil Accommodation Report 2015/2016 outlines details of the following impacted grants.

- Top-up Funding reduction under the School Facility Operations and Renewal Grant
- Declining Enrolment Adjustment Grant reduction
- Geographic Circumstances Grant (rural designation) reduction
- School Foundation Grant reduction

Strong fiscal management is an important component of Ontario's publicly funded education system. Ontario's Ministry of Education states, in their *Achieving Excellence: A Renewed Vision for Education in Ontario*, that "public trust is built when the education system makes decisions based on evidence and research, and when it is seen as a good steward of public resources". This focus has led to changes in how the Ministry is providing grant funding for education in the province. It is no longer fiscally sustainable to continue to fund empty pupil spaces in our schools. This practice diverts significant funding that supports student learning.

Top-up Allocation Under the School Facility Operations and Renewal Grant

Top-up funding, as provided under the School Facility Operations and Renewal Grant, was provided to school boards since 2003 to assist in managing and funding underutilized schools. The old method of calculating top-up funding is being phased out over a three year period starting with the 2015-16 budget year. The LKDSB, under this old top-up funding formula, would have received \$6,206,973 for the 2015-16 budget year. This year's allocation, under the new funding formula is \$4,774,142 or a loss of \$1,432,831.

The following table shows the annual impact of the funding phase out over the three year period:

| Budget Year | Budget Allocation Method | Calculation of Previous Year Funding | Budget Year Funding | Difference (Loss in Funding) |
|--------------|--|--------------------------------------|---------------------|------------------------------|
| 2015-16 | 1/3 funding – new method 2/3 funding – old method | \$6,206,973 | \$4,774,142 | \$1,432,831 |
| 2016-17 | 2/3 funding – new method 1/3 funding – old method | \$4,774,142 | \$3,341,312 | \$1,432,830 |
| 2017-18 | All funding – new method | \$3,341,312 | \$1,908,482 | \$1,432,830 |
| Total | | | | \$4,298,491 |

The Enhanced Top-up funding portion will continue with new Ministry eligibility criteria based on road network distance between facilities. Eligible schools within the LKDSB will continue to receive top-up to 100% of the school's capacity. The new eligibility criteria are as follows:

- Elementary schools must be at least 10 km away from the next closest school of the Board
- Secondary schools must be at least 20 km away from the next closest secondary school of the Board

Once the new model for Top-up Funding is completely phased in, the LKDSB will lose \$4,298,491 on an annual basis. The LKDSB, under the new Top-up Funding formula will receive funding for only 11 elementary schools rather than its current 47 elementary schools and only 3 secondary schools rather than its current 13 secondary schools. The new Top-up funding formula no longer supports under-capacity schools that are operating in close proximity to other LKDSB schools. This loss of funding affects both South Plympton and Wyoming Public Schools as outlined below.

| Schools | Proximity to Neighbours km/Capacity % | Top-up Funding Loss by 2018 from Old Model |
|----------------|--|--|
| South Plympton | 1.9 km/79.86% | \$31,486 |
| Wyoming | 1.9 km/58.45% | \$73,205 |
| Total | | \$104,691 |

Declining Enrolment Adjustment Grant

The Declining Enrolment Adjustment Grant funds school boards that are experiencing a decline in student enrolment. This grant provides time for a school board to address declining enrolment through program and facility changes. The Ministry understands that it can take time to address declining enrolment and this funding source helps school boards bridge the time gap between enrolment issues and program and facility changes. This change will be phased in over a three year period. The LKDSB 2015-16 budget has experienced a loss in this grant in the amount of \$390,711. This loss will continue and grow annually over the next three years.

Geographic Circumstances Grant

The Geographic Circumstances Grant provides funding to school boards that operate small, isolated schools and that are faced with additional operating costs due to geographical challenges such as school board size and school dispersion. This grant has the following three components:

Remote and Rural Allocation – supports the higher cost of purchasing goods and services for small school boards, for school boards that are distant from major urban centres and for boards with schools that are distant from one another (LKDSB facing reduction in 2015-16 of \$23,443)

Supported Schools Allocation – provides additional funding for teaching and early childhood educator staff to improve the viability of supported schools (LKDSB facing reduction in 2015-16 of \$4,955)

Rural and Small Community Allocation – supports schools in rural or small communities (LKDSB facing reduction in 2015-16 of \$52,950)

Changes to this grant will be phased in over a three year period following the same 1/3-2/3 phase-in method as described above. The LKDSB will experience a total grant decrease of \$81,348 for 2015-16

when compared to the old funding model. After the three year phase-in of the new formula, the annual loss in funding will be \$250,535.

School Foundation Grant

The School Foundation Grant covers the costs of school administration including salaries and benefits for principals, vice-principals and office support staff as well as school administration supplies. A new allocation method will be phased in for this grant. The new funding formula will shift funding away from small schools that are not isolated. Funding preference will be given to schools that are large, remote and/or combined. A combined school would contain grades from both the elementary and secondary panels. The LKDSB is losing funding under this grant. The 2015-16 grant reduction is \$103,568. Under the new formula, the LKDSB will continue to see a funding reduction in this grant as the enrolment in the Board’s schools continues to decline.

Schools and the LKDSB Capital Replacement Program

The LKDSB currently operates a total of 65 schools – 52 in the elementary panel and 13 in the secondary panel. Despite the fact that the LKDSB has fully spent its annual maintenance and capital improvement budgets, its buildings continue to deteriorate as they age. The LKDSB is located within the Ministry of Education London Region in Ontario which encompasses Southwestern Ontario.

The average age of schools in:

- Ontario is 38 years
- London Region is 43 years
- LKDSB secondary schools is 46 years
- LKDSB elementary schools is 51 years

The LKDSB operates some of the oldest schools in both the province of Ontario and the London Region. The LKDSB has continued to maintain the facility integrity of both South Plympton and Wyoming Public Schools to provide the best possible educational opportunities for students who attend those schools. The chart below (from the Ministry of Education Total Capital Planning Solution, TCPS database) shows the capital dollars spent by the LKDSB since 2003 to maintain the physical plant of both schools.

| Year of Capital Expenditure | South Plympton | Wyoming |
|------------------------------------|-----------------------|--------------------|
| 2003 | | |
| 2004 | 83,911 | |
| 2005 | | |
| 2006 | 169,302 | 475,522 |
| 2007 | | 370,528 |
| 2008 | | |
| 2009 | | 215,956 |
| 2010 | | |
| 2011 | 162,898 | |
| 2012 | 104,829 | |
| 2013 | 111,815 | |
| 2014 | 156,309 | |
| TOTALS: | \$789,064 | \$1,062,006 |

The capital expenditures in the above chart were for the following items:

- South Plympton – structural roof framing upgrade, replacement of hot water boilers, replacement of exterior windows and doors, replacement of asphalt on playground and east driveway, and roof replacement.
- Wyoming – replacement of interior lighting, structural roof framing upgrade, replacement of heating terminal units, acoustic tile replacement throughout the school, replacement of heating piping systems, and roof replacement.

In addition to TCPS data the School Information Profile (SIP) data indicates the following expenditures of capital dollars targeting both schools. These figures may differ because some expenditures are deemed to be capital while others are routine maintenance and operating expenditures.

| South Plympton | | | Wyoming | | |
|----------------|-----------------------------------|------------------|---------|------------------------------|--------------------|
| Year | Description | Total | Year | Description | Total |
| 2005 | Structural Reinforcing | \$83,911 | 2007 | Mechanical Room Upgrade | \$830,934 |
| 2007 | Boiler Replacement | \$145,101 | 2010 | Partial Roof Replacement | \$200,229 |
| 2012 | Window & Door Replacement | \$137,000 | 2012 | Junior/Intermediate Climbers | \$35,660 |
| 2012 | Climbers (Play Truck & Quad Arch) | \$12,500 | | | |
| 2013 | Asphalt Replacement | \$82,375 | | | |
| 2014 | Partial Roof Replacement | \$111,378 | | | |
| 2015 | Partial Roof Replacement | \$175,000 | | | |
| | TOTALS | \$747,265 | | TOTALS | \$1,066,823 |

B. Accommodation Review Process

The Accommodation Review process consists of five components:

- B.1** - The establishment of an Accommodation Review Committee
- B.2** - Public Meetings
- B.3** - Community and Municipal Government consultation
- B.4** - Public Delegations to Board of Trustees
- B.5** - Meetings with LKDSB Staff

B.1 Accommodation Review Committee (ARC)

Mandate:

The Accommodation Review Committee (ARC) represents the school(s) under review and acts as the official conduit for information shared between the school board and the school communities. The ARC may comment on the Initial Staff Report and may, throughout the pupil accommodation review process, seek clarification of the Initial Staff Report. The ARC may provide other accommodation options than those included in the Initial Staff Report; however, it must include supporting rationale for any such option.

The following chart provides a summary of the ARC Meetings.

| Date | Wyoming Area Schools Accommodation Review Committee Meetings | Synopsis |
|-------------------|---|--|
| January 7, 2016 | ARC Orientation Session 6:30 to 8:30 p.m. | Administration provided an Orientation Session and reviewed the mandate, roles and responsibilities, and procedures of the ARC. |
| February 29, 2016 | Accommodation Review Committee Working Meeting #1 (Wyoming Public School) 6:00 to 8:00 p.m. | ARC members approved the Minutes/ROA from the January 19, 2016 Public Meeting. Administration responded to questions from the ARC members that came from the public. These can be found on the |

| Date | Wyoming Area Schools Accommodation Review Committee Meetings | Synopsis |
|------|--|---|
| | | <p>Minutes/ROA from the February 29, 2016 Working Meeting on the LKDSB website.</p> <p>ARC members discussed and examined alternative School Accommodation Options.</p> <ul style="list-style-type: none"> - Status-quo - no ARC member desired further discussion on this option. - LCCVI as a Grade 7 to 12 School and the closure of either South Plympton or Wyoming School and the adoption of either school as a Kindergarten to Grade 6 School. – no ARC members desired further discussion on this option. - Consolidation at South Plympton with the closure of Wyoming Public School – ARC members agreed to further discuss this option. - Consolidation at Wyoming Public School with the closure of South Plympton Public School which was the recommendation in the Initial Staff Report. <p>ARC members requested that the options involving the closure of South Plympton and the consolidation at Wyoming and the closure of Wyoming and the consolidation at South Plympton options be broken down to reflect six scenarios for discussions at the next ARC Working Meeting.</p> <p>The committee requested this breakdown to reflect 6 scenarios:</p> <ol style="list-style-type: none"> 1. Close South Plympton for 2016 and move students to Wyoming Public School. 2. Close Wyoming Public School for 2016 and move students to South Plympton Public School. 3. Move all students into South Plympton Public School and close Wyoming Public School to complete construction. Move all students back to Wyoming Public School for 2017 and close South Plympton Public School in 2017. 4. Move all students into Wyoming Public School and close South Plympton Public School to complete construction. Move all students back to South Plympton Public School for 2017 and close Wyoming Public School in 2017. 5. Keep both open for 2016 make renovations to Wyoming Public School and close South Plympton Public School in 2017. Move all students to Wyoming Public School in 2017. 6. Keep both open for 2016 make renovations to South Plympton Public School and close Wyoming Public School in 2017. Move all students to South Plympton Public School in 2017. <p>These discussions were outlined in a Pro and Con list and the Minutes/ROA from the Meeting.</p> |

| Date | Wyoming Area Schools Accommodation Review Committee Meetings | Synopsis |
|---------------------------|--|--|
| | | <p>Time was allotted for a Question and Answer period from the ARC members.</p> <p>Members of the public who were in attendance submitted questions that were answered and posted with the Minutes/Record of Action.</p> |
| <p>March 31, 2016</p> | <p>Working Meeting #2 with ARC Committee (Wyoming Public School) 6:00 p.m. extended to 9:40 p.m.</p> | <p>ARC Members approved the Minutes/ROA from the March 23, 2016 Public Meeting. Administration organized presentations and accompanying discussions from the following LKDSB third party consultants, experts, and Board staff responsible for topics requested by ARC members.</p> <ul style="list-style-type: none"> ○ Kent Orr, General Manager of CLASS, Transportation Consortium (Transportation and Community Use of Schools) addressed transportation concerns that had been expressed by parents. ○ Wendy Pitvor, LKDSB Health and Safety Officer, spoke on the conditions of both buildings in regard to mould, asbestos and health and safety concerns. ○ Andy Scheibli, LKDSB Manager of Plant and Maintenance, spoke about the building services perspective on the buildings and the process for construction. Architects Marco Raposo and Joe Ouellette from ROA Studio Inc. were asked to evaluate both sites without prejudice. Architectural drawings for proposed changes at both schools were presented to the Committee. (please note these drawings were proposed and dependent upon funding from the Ministry) ○ Superintendent McKay – addressed operating cost comparisons for both schools. <p>ARC members discussed and examined alternative School Accommodation Options:</p> <p>The ARC members discussed the six options</p> <ol style="list-style-type: none"> 1. Close South Plympton for 2016 and move students to Wyoming Public School. 2. Close Wyoming Public School for 2016 and move students to South Plympton Public School. 3. Move all students into South Plympton Public School and close Wyoming Public School to complete construction. Move all students back to Wyoming Public School for 2017 and close South Plympton Public School in 2017. 4. Move all students into Wyoming Public School and close South Plympton Public School to complete |

| Date | Wyoming Area Schools Accommodation Review Committee Meetings | Synopsis |
|------|--|---|
| | | <p>construction. Move all students back to South Plympton Public School for 2017 and close Wyoming Public School in 2017.</p> <p>5. Keep both open for 2016 make renovations to Wyoming Public School and close South Plympton Public School in 2017. Move all students to Wyoming Public School in 2017.</p> <p>6. Keep both open for 2016 make renovations to South Plympton Public School and close Wyoming Public School in 2017. Move all students to South Plympton Public School in 2017.</p> <p>Of the six options the ARC members agreed unanimously that they would support keeping either school open and updating the chosen building as long as the consolidation timeline was extended. They also agreed that doing construction with some of the students in the building or with all students moved to one location was acceptable as long as the Board and its architects had a firm plan for student and staff safety.</p> <p>These discussions were outlined in a Pro and Con list.</p> <p>Time was allotted for a Question and Answer period from the ARC members.</p> <p>Specific comments from ARC members in regard to their positions and final statements can be found in the attached section of the Minutes/Record of Action from the Final Working Meeting.</p> <p>Members of the public that were in attendance submitted questions that were answered and posted with Minutes/Record of Action.</p> |

Options Considered by the ARC

The Committee examined and discussed the following options.

- Status quo - There was little support from ARC members for this option. This option would see each school remain and function as it presently does with populations under capacity. It was recognized by the Committee that consolidation of schools would reduce the transitions for their students. The ARC members recognized the need for the Board to achieve efficiencies.
- LCCVI as a Grade 7 to 12 School and the closure of either South Plympton or Wyoming Public School and the adoption of either school as a Kindergarten to Grade 6 School. There was little support to move Grades 7 and 8 students into LCCVI. This option would have involved discussions with numerous other elementary schools that are also feeder schools to LCCVI.
- Consolidation at South Plympton Public School with the closure of Wyoming Public School.
 - To be completed by September 2016. ARC members, parents and the public expressed great concern about completing the process for a September 2016 consolidation date.
 - Move all students into Wyoming Public School and close South Plympton Public School to complete Construction. Move all students back to South Plympton Public School for 2017 and close Wyoming Public School in 2017. Parents were concerned that this would involve more

movement of students than necessary. However, they did understand that there are some benefits to vacating all staff and students from a construction site.

- Keep both open for 2016 make renovations to South Plympton Public School and close Wyoming Public School in 2017. Move all students to South Plympton Public School in 2017. Parents liked the idea of keeping both schools open for one more year while renovations are done to South Plympton Public School. A rationale presented by the Board staff and ROA architects describing how the school would be safe for staff and students to attend while construction occurred.
- Consolidation at Wyoming Public School with the closure of South Plympton Public School which was the recommendation in the Initial Staff Report.
 - To be completed by September 2016. ARC members, parents and the public expressed great concern about completing the process for a September 2016 consolidation date.
 - Move all students into South Plympton Public School and close Wyoming Public School to complete Construction. Move all students back to Wyoming Public School for 2017 and close South Plympton Public School in 2017. Parents were concerned that this would involve more movement of students than necessary. However, they did understand that there are benefits to vacating all staff and students from a construction site.
 - Keep both open for 2016 make renovations to Wyoming Public School and close South Plympton Public Schools in 2017. Move all students to Wyoming Public School in 2017. Parents liked the idea of keeping both schools open for one more year while renovations are done to Wyoming Public School. A rationale was presented by the Board staff and ROA architects describing how the school would be safe for staff and students to attend while construction occurred.

B.2 Public Meetings

The following provides a summary of the Wyoming Area Schools Accommodation Review Public Meetings.

| Date | Wyoming Area Schools Accommodation Review Public Meetings | Synopsis |
|------------------|--|--|
| January 19, 2016 | Pupil Accommodation Review Public Meeting #1 at Wyoming Public School 6:30 to 9:17 p.m. | Administration provided an overview of the ARC Orientation Session, presented the Initial Staff Report with the recommended option, and the School Information Profiles (SIP). Kent Orr, General Manager of CLASS, Transportation Consortium (Transportation and Community Use of Schools) provided a transportation presentation. The presentation is posted on the LKDSB website. Twenty-five members of the public and ARC members asked questions and provided input on both the staff recommendation and process. |
| March 23,2016 | Pupil Accommodation Review Public Meeting #2 at South Plympton Public School 6:30 to 8:25 p.m. | ARC Members approved the Minutes/Record of Action from the February 29, 2016 Working Meeting #1. Administration presented an overview of the discussion from the Accommodation Review Working Meeting #1. Thirty-two other members of the public and ARC members asked questions and provided input on both the staff recommendation and process. |

Themes from Public Meetings

- Parents, community members and ARC members were concerned about the timeline for the process. They expressed the desire for the consolidation to occur at a later date than September 2016.
- Parents of students at South Plympton Public School expressed concerns about their students walking to school and having to cross Highway 21 at the pedestrian crossing site. There was a desire to have

continued busing for younger students inside of the 1.6 km LKDSB walk distance policy and regulations. Some parents whose students are presently bused to South Plympton Public School noted that their children would have to walk to Wyoming Public School should consolidation occur at that site. The LKDSB has included options to alleviate some of those concerns that were discussed at ARC Working Meeting #2, in conversation with the representatives from the Town of Plympton-Wyoming and using examples from other schools that could be part of the Transition Committee.

- Some members of the public stated that South Plympton Public School was a preferable location to Wyoming Public School.
- Concerns were expressed by parents about the movement for the Best Start and Day Care program to Wyoming Public School should that be the consolidated school.
- Parents were concerned about the washrooms being able to accommodate young students at both schools. There were also concerns about the quantity of facilities at either consolidated site.
- Parents were concerned about the safety of the students and staff during construction if this were to occur while students and staff were in the building.
- Parents expressed concerns about traffic patterns and congestion at the Wyoming site and how this would affect student safety during peak traffic times during the school day.
- Parents were concerned about the amount of green space at the Wyoming site and whether or not there would be sufficient green space if construction took place at the site.
- The public wanted further discussion on the potential for population growth in the Town of Wyoming and the potential impact with regard to discussions by the coterminous school board.

B.3 Community Consultations

| Date | Wyoming Area Public Schools Accommodation Review Consultation Meetings | Synopsis |
|-------------------|--|--|
| October 6, 2015 | Capital Plan and Community Partnership LKDSB Special Board Meeting | <p>The LKDSB invited the municipalities and community partners on the LKDSB entities list to the Special Board Meeting on October 6, 2015. They were provided with a copy of the Agenda and LKDSB Capital Plan via email prior to the meeting.</p> <p>The Municipality of Chatham-Kent and County of Lambton provided the Board with demographic information prior to the Board’s Capital Plan Meeting in October 2015. The Town of Petrolia corresponded with the Board.</p> <p>To date, partnership offers have not been received from our municipal partners or business partners to utilize the unused pupil spaces in either South Plympton or Wyoming Public School.</p> |
| November 24, 2015 | Pupil Accommodation and Initial Staff Report Presented to Trustees at the Board Meeting. | The Pupil Accommodation Report and Initial Staff Report were presented to the Trustees and the Public. The Board approved a Motion to establish an Accommodation Review Committee for Wyoming Area Schools and to study the Initial Staff Report recommendation for consolidation of South Plympton Public School and Wyoming Public School at the Wyoming Public School site. |
| December 2, 2015 | Meeting with Mayor Napper from the Town of Plympton-Wyoming | Administration met with Mayor Napper from the Town of Plympton-Wyoming to present the Pupil Accommodation Report 2015/2016 and review |

| Date | Wyoming Area Public Schools Accommodation Review Consultation Meetings | Synopsis |
|----------------|--|---|
| | | questions and concerns. |
| March 9, 2016 | Public Facility Tours of Wyoming Public School and South Plympton Public School (3:30 to 5:30pm) | Wyoming Public School and South Plympton Administrators conducted guided tours of the schools for interested ARC members and members of the public. |
| April 26, 2016 | Final Staff Report Presented at LKDSB Board Meeting in Sarnia | Senior Administration will deliver this report to trustees at the regular Board Meeting scheduled for April 26, 2016 for information. The report will be posted on the LKDSB website. Delegations from this meeting will be incorporated into the Addendum to be presented to Trustees with the Final Staff Report on May 24, 2016. |
| May 10, 2016 | Delegations to Present at LKDSB Board Meeting in Sarnia | Information will be incorporated into the Addendum to be presented to Trustees with the Final Staff Report on May 24, 2016 |
| May 24, 2016 | Vote of Trustees at LKDSB Board Meeting in Sarnia | Presentation of Final Staff Report and Addendum to Trustees for consideration and voting purposes. |

Relevant Discussions and Correspondence with Municipalities and Other Community Partners

County of Lambton demographic report – In response to an invitation to the Community Partners meeting in October 2015, the County of Lambton made available the County of Lambton-2011 Projection Summary – By Age Cohorts Report. The LKDSB has corresponded with the County of Lambton to clarify their population projections for the Town of Plympton-Wyoming. Their projections of declining population in the Town of Plympton-Wyoming are congruent with our continued decline in student population.

Town of Plympton-Wyoming – The LKDSB invited the Town of Plympton-Wyoming to the Community Partners Special Board Meeting on October 6, 2015 to present the LKDSB Capital Plan and to inform all municipal partners of the LKDSB’s desire to form partnerships to use unfunded student spaces in our schools. The LKDSB also initiated a meeting following the release of the LKDSB Pupil Accommodation Report and Initial Staff Report in November 2015. The Board has had discussions with the Mayor of the Town of Plympton-Wyoming and their staff in regards to subdivision development and safe arrival of students at schools. The Mayor was present at the majority of Public and Working Accommodation Review Meetings.

B.4 Public Delegations to the Board of Trustees

| Date | Wyoming Area Schools Accommodation Review Public Delegations | Synopsis |
|----------------|--|---|
| April 26, 2016 | Regular Board Meeting - Delegation | Jolene and Jordan McCallum regarding the Wyoming Public and South Plympton School campus sites. |

An addendum to the Final Staff Report will include a summary of information provided by additional parties who choose to delegate to the Board of Trustees prior to the final vote by the Trustees on May 24, 2016.

B.5 Meetings with LKDSB Staff

| Date | Wyoming Area Schools Accommodation Review LKDSB Staff Meetings | Synopsis |
|---------------------|--|---|
| October 27, 2015 | Meeting with CLASS Transportation Consortium | Transportation staff conducted research on route review, potential boundary changes and cost analysis on the potential South Plympton and Wyoming Public Schools consolidation. |
| November 23, 2015 | Initial Staff Report Conversation with LKDSB Administration | Administration met with Principals and Managers regarding proposed Pupil Accommodation Plan. |
| November 25, 2015 | Meeting with CUPE, ETFO, and OSSTF | Administration met with the Presidents of CUPE, ETFO and OSSTF to share and discuss the Pupil Accommodation Report 2015/2016. |
| January 26, 2016 | Meeting with CUPE, ETFO, and OSSTF | Administration met with Union Presidents to discuss continued pathways for staff participation and input on the recommendation. |
| February 19, 2016 | Meeting with CUPE, ETFO, and OSSTF | Administration met with Union Presidents to prepare for meetings with school Board employees involved with Accommodation Reviews. |
| February 24, 2016 | Meetings with LKDSB Employees at South Plympton and Wyoming Public Schools Staff (3:45 to 4:45 pm) | School Administration and Senior Union Leadership hosted a meeting for LKDSB Senior Administration to respond to questions and receive input from South Plympton and Wyoming Schools employees. |

C. Staff Recommendations and Rationale

After much consultation with the South Plympton and Wyoming Public Schools communities through the Accommodation Review Process, Administration recommends the following:

C.1 Recommendation #1

“That the Board approve the consolidation of South Plympton Public School and Wyoming Public School at the Wyoming Public School site in September 2017.”

Rationale

C.1.1 Program Changes as a Result of the Proposed Option

Benefits of Kindergarten to Grade 8 in one school:

Transitions can be stressful for students, especially those in the primary grades. A transition from one school to another brings a different facility, unfamiliar teachers and administrators, new groups of friendships and classmates, as well as different expectations. One school will eliminate a large transition for students at the end of grade three. With a consolidated site, more siblings could attend one school together. A Kindergarten to Grade 8 school allows for more opportunities for mixed sessions for remediation, tutoring, or enrichment activities. Teachers are more informed about students and their specific strengths and needs from an earlier vantage point as there are more staff in the same site. This allows teachers to participate in collaborative problem-solving to determine solutions for behavioral/academic challenges and view progress in individual students. A Kindergarten to Grade 8 school provides increased opportunities for students from a greater span in age groups to interact with each other. A school approach to literacy and numeracy allows a continuous plan to be developed for students from Kindergarten to Grade 8.

As part of the student consolidation at the Wyoming site, a pre-school room and Before and After program would definitely be included in the child care plan for the site. There is also the potential of expansion of services to include younger children subject to funding approval from the Ministry, appropriate service demand and participation from the child care provider.

Cost Efficiencies to Program with Consolidation

During the public and working meetings the ARC members and the community were informed that there are additional costs to operating school programs with a Kindergarten to Grade 3 site and a Grade 4 to Grade 8 site. For example the total cost to operate South-Plympton Public School and Wyoming Public School from a staffing perspective is a cost of approximately \$1.73M. An approximate savings of \$129,000 could be achieved by consolidating into one single site. This does not include the operating costs outlined below.

C.1.2 Operating Cost and Revenue Analysis

The following table provides a comparison of the actual operating costs for the 2014/15 school year of South Plympton and Wyoming Public Schools in order to assess the potential annual savings that the LKDSB would realize through the closure of one of the schools.

| Cost Category | Cost Type | South Plympton | Wyoming | Difference |
|--------------------------|-------------------------|----------------------|----------------------|---------------------|
| Utilities - Hydro | Operating - 2015 Actual | \$ 13,160.48 | \$ 27,920.45 | - 14,759.97 |
| Utilities - Gas | Operating - 2015 Actual | 9,947.73 | 7,153.15 | 2,794.58 |
| Utilities - Water | Operating - 2015 Actual | 386.38 | 6,619.35 | - 6,232.97 |
| Maintenance & Repair | Operating - 2015 Actual | 20,482.76 | 11,501.71 | 8,981.05 |
| Custodial & Housekeeping | Operating - 2015 Actual | 68,619.58 | 53,601.37 | 15,018.21 |
| Annual Maintenance Plan | Operating - 2015 Actual | 9,337.27 | 2,947.33 | 6,389.94 |
| Furniture and Equipment | Operating - 2015 Actual | 4,179.22 | 1,740.82 | 2,438.40 |
| Secretary Staffing | Operating - 2015 Actual | 52,510.56 | 52,510.56 | - |
| Vice Principal Staffing | Operating - 2015 Actual | 52,405.97 | 52,405.97 | - |
| Total: | | \$ 231,029.95 | \$ 216,400.71 | \$ 14,629.24 |

The above table includes costing information in the following areas:

- Utilities – including hydro, gas and water expenditures;
- Maintenance and Repair – including flooding cleanup costs, roofing, doors, windows, and building services such as HVAC, plumbing and electrical systems;
- Custodial and Housekeeping – including custodial contract, custodial supplies, fire extinguisher maintenance, grass cutting and snow removal;
- Annual Maintenance Plan – including health and safety repairs, flooring, larger systems projects and painting;
- Furniture and Equipment
- Staffing – including secretary and administration (vice-principal) staffing. The funding for the vice-principal position is from the School Foundation Grant. The Board would see a reduction in the School Foundation Grant as a result of the elimination of this position.

This information represents actual incurred costs for the 2014/15 school year. To summarize, the comparison shows that the total costs for these expenditure areas are as follows:

| School | Costs (2014/15 school year) |
|----------------------------|------------------------------------|
| South Plympton | \$231,029.95 |
| Wyoming | \$216,400.71 |
| Difference in Cost Totals: | \$14,629.24 |

The following table provides a comparison of the operating costs for a three year average between South Plympton and Wyoming Public Schools. A three year average is included in order to assess the operating cost difference between the schools by averaging out expenditure trends over a multi-year period. The information in the table is based on an average of actual expenditures at each school for the 2012/13, 2013/14 and 2014/15 school years. The same costing categories are used for the calculation of the three year average.

| Cost Category | Cost Type - (Actual or 3 Year Average) | South Plympton | Wyoming | Difference |
|--------------------------|---|-----------------------|----------------------|-------------------|
| Utilities - Hydro | Operating - 3 year average | \$ 11,235.55 | \$ 25,806.33 | - 14,570.78 |
| Utilities - Gas | Operating - 3 year average | 9,178.66 | 7,263.87 | 1,914.79 |
| Utilities - Water | Operating - 3 year average | 1,224.64 | 6,818.66 | - 5,594.02 |
| Maintenance & Repair | Operating - 3 year average | 12,686.41 | 10,648.80 | 2,037.61 |
| Custodial & Housekeeping | Operating - 3 year average | 68,267.87 | 58,179.51 | 10,088.36 |
| Annual Maintenance Plan | Operating - 3 year average | 12,913.01 | 6,973.34 | 5,939.67 |
| Furniture and Equipment | Operating - 3 year average | 4,970.16 | 3,847.35 | 1,122.81 |
| Secretary Staffing | Operating - 2015 Actual | 52,510.56 | 52,510.56 | - |
| Vice Principal Staffing | Operating - 2015 Actual | 52,405.97 | 52,405.97 | - |
| Total: | | <u>\$ 225,392.83</u> | <u>\$ 224,454.39</u> | <u>\$ 938.44</u> |

The comparison shows that the total costs for these expenditure areas are as follows:

| School | Costs (3 year average) |
|----------------------------|-------------------------------|
| South Plympton | \$225,392.83 |
| Wyoming | \$224,454.39 |
| Difference in Cost Totals: | \$938.44 |

Based on the above 3 year average operating cost analysis, the amount of expected annual savings due to a school closure is similar for each school.

Transportation Operating Costs

CLASS believes that with a complete routing redesign of all existing Wyoming elementary buses and integration with the local coterminous Board routes, all eligible students can be transported with fewer routes than are currently in place. There are currently six buses servicing the three elementary schools in Wyoming and if the school consolidation were to be at the Wyoming Public School site, CLASS believes that they would only require four or five shared buses to transport all of the eligible students. This reduction will provide minor, incremental mileage cost reductions for both school boards annually and will also support our commitment to environmental stewardship and continuous efficiency improvements.

New route designs will also provide comparable ride times for existing students. The reduction of elementary buses will not result in fleet reductions for CLASS as all of the existing buses are multi-tier, servicing other schools. It is however anticipated that there will be incremental mileage reduction cost savings for the school boards with the new routes. Note: this routing solution and associated cost savings projections are based upon key assumptions outlined below.

Key Assumptions:

- 1) Existing bus loading (max 60) and ride time (max 60 minutes) parameters
Complete route redesign for all bus runs to maximize efficiency
- 3) New Bell times for Wyoming Public School to be 9:05am and 3:25pm. (Currently 9:00am/ 3:20pm).
The new bell time will support integration of bus runs with the coterminous elementary school in Wyoming to maximize existing fleet resources.

Operating Revenue

The following table outlines the current projected community use revenue for the 2015/16 school year for both South Plympton and Wyoming Public Schools. This information is a combination of actual data and projected data as follows:

- September 1, 2015 to January 10, 2016 – actual data
- January 11, 2016 to June 30, 2016 – projections based on current rental permits in the system.
- The tables below contain 2015-16 data as at January 11, 2016 from the CLASS school rental booking software. Data provided is a combination of historical data and projected data as follows:
September 1st 2015 – January 10th 2016 - historical data
- January 11th 2016 – June 30th 2016 - projections based on current permits in the system

| PROJECTED SEPTEMBER 2015-JUNE 2016 | | |
|------------------------------------|----------------|--------------|
| SCHOOL RENTAL PERMITTED HOURS | South Plympton | Wyoming |
| Classroom | 0 | 0 |
| Gymnasium – Single | 0 | 0 |
| Library | 26 | 25 |
| TOTAL PERMITTED HOURS | 26 | 25 |
| PROJECTED SEPTEMBER 2015-JUNE 2016 | | |
| SCHOOL RENTAL REVENUE | South Plympton | Wyoming |
| Paid by rental groups | \$0 | \$0 |
| Covered by the CUS grant | \$104 | \$100 |
| TOTAL REVENUE | \$104 | \$100 |

C.1.3 Capital Cost Analysis

The main measure used in assessing capital requirements for Ontario schools is the Facility Condition Index (FCI). FCI is an industry standard which expresses the facility’s total renewal cost as a percentage of replacement value. (Source – Ministry of Education – Good Places to Learn: Stage 2 Funding Allocation (Revised February 12, 2007).

The FCI compares the total cost of required capital work in LKDSB schools against the replacement value of those same schools. A facility with a high FCI would generally require a larger capital investment than a similar sized facility that has a lower FCI. The building condition and capital requirement data is provided to Ontario school boards by the Ministry of Education. The Ministry contracts with engineering consulting firms to assess and inventory all Ontario schools over a 5 year period. This information is then loaded into a Total Capital Planning Solution (TCPS) database for school boards. This information is used in order to plan for capital work on schools. This information is also used in the pupil accommodation process when assessing which schools to consolidate.

The following tables provide the 5 year capital project requirements for South Plympton and Wyoming Public Schools, as provided to LKDSB by the Ministry of Education and broken down by capital category. The capital numbers in the tables do not include costs for asbestos remediation and accessibility improvements to both schools.

South Plympton

| | 2015 | 2016 | 2017 | 2018 | 2019 | TOTALS |
|-----------------------------------|------------------|----------------|---------------|----------|----------|------------------|
| Substructure | | | | | | - |
| Shell | 60,060 | | | | | 60,060 |
| Interiors | 392,028 | 119,411 | 7,721 | | | 519,160 |
| Services | 1,149,876 | | 27,037 | | | 1,176,913 |
| Equipment & Furnishings | | | | | | - |
| Special Construction & Demolition | | | | | | - |
| Building Sitework | 331,474 | 81,110 | | | | 412,584 |
| TOTAL: | 1,933,438 | 200,521 | 34,758 | - | - | 2,168,717 |
| 5 Year South Plympton FCI | | | | | | 53.82% |

Wyoming

| | 2015 | 2016 | 2017 | 2018 | 2019 | TOTALS |
|-----------------------------------|------------------|----------------|----------|----------|----------|------------------|
| Substructure | | | | | | - |
| Shell | 555,828 | 94,213 | | | | 650,041 |
| Interiors | 321,048 | 205,224 | | | | 526,272 |
| Services | 249,522 | 112,653 | | | | 362,175 |
| Equipment & Furnishings | | | | | | - |
| Special Construction & Demolition | | | | | | - |
| Building Sitework | 349,223 | 76,876 | | | | 426,099 |
| TOTAL: | 1,475,621 | 488,966 | - | - | - | 1,964,587 |
| 5 Year Wyoming FCI | | | | | | 33.71% |

In summary, the total capital needs, from the above tables, for each school over the next five years is as follows:

| School | 5 year capital needs (\$) |
|----------------|---------------------------|
| South Plympton | \$2,168,717 |
| Wyoming | \$1,964,587 |

This information is used to calculate the 5 year FCI which is summarized in the below table:

| School | 5 year FCI (%) |
|----------------|----------------|
| South Plympton | 53.82% |
| Wyoming | 33.71% |

Based on the information in the above tables, South Plympton has the higher 5 year capital requirement and FCI.

The FCI calculation does not take into account potential capital requirements for asbestos remediation and accessibility improvements for LKDSB schools. The mandate of the Ministry-contracted consultant does not include these two areas. During the Accommodation Review Process the LKDSB engaged an architect, structural engineer and asbestos consultants to summarize these areas.

The replacement costs for South Plympton Public School and Wyoming Public School that is used in the FCI calculation is:

| School | Building Replacement Value |
|----------------|----------------------------|
| South Plympton | \$4,029,580 |
| Wyoming | \$5,827,870 |

C.1.4 Asbestos/Health and Safety/Septic System

Asbestos management and remediation programs occur annually in LKDSB schools. There are very minor asbestos issues in both schools. There have been no recent concerns from staff members or school representatives regarding mould at either location. Both schools were constructed during a period when asbestos was heavily used in building products and as a result both buildings contain asbestos to some extent. When comparing the two buildings, neither school stands out more than the other in regards to asbestos and it should be noted that all the materials can remain in place as long as they remain in good condition. Each school is inspected annually by an outside consultant to ensure the materials are still in good shape and to address any changes in condition. The analysis of each school in this regard was not a determining factor in the choice for school consolidation.

The existing septic system and weeping bed at South Plympton Public School are original to the school, built in 1962. The age of the system is 54 years and nearing typical end of life for septic systems. The existing system was most likely designed to accommodate the student population when the school was built. The only addition to the school was the Library in 1994 which did not increase the student capacity of the building.

Increasing the school capacity by 3 classrooms, an ALLP (Alternative Learning and Life Skills Program) room and new daycare facility would significantly increase the load on the system and due to its age and limited capacity, would require the septic system to be replaced.

C.1.5 Architectural Review

During the discussion by the architect from ROA Studio Inc. during ARC Working Meeting #2, the potential work to accommodate all students at South Plympton Public School was found to be a higher cost due to construction of additional classrooms as South Plympton is a smaller building. Increasing the school capacity would also require the replacement of the septic system.

C.1.6 Rationale for Choosing the Wyoming Public School Site

| | South Plympton Public School | Wyoming Public School |
|---|--|--|
| <u>FCI – Five year</u> The Ministry of Education looks favourable on a site with a lower FCI. | 53.82% \$2,168,717 | 33.71% \$1,964,587 |
| <u>Building and Land Size</u> The larger building size can accommodate more students with less construction of new classroom space. This will be an advantage in the Ministry grant application. | Building - 1,466 sq. m. Land - 3.04 hectares (7.511 acres) | Building - 1,964 sq. m. Land - 2.43 hectares (6.004 acres) |
| <u>Operating Costs</u> 2014/2015 School year The operating costs slightly favour Wyoming Public School. | \$231,029.95 | \$216,400.71 |
| <u>Architectural Costs</u> ROA has estimated that the capital renewal and addition costs would be higher at the South Plympton Public School site due to the construction of additional classrooms and the replacement of the septic system. | Higher | Lower |
| <u>Location of Building</u> The majority of students live in the vicinity of Wyoming Public School. | 74 students live within 1.6 km of South Plympton Public School | 167 students live within 1.6 km of Wyoming Public School |
| Transportation Costs | Slight increase in costs | Small savings |

Capital Grant Application

The Ministry of Education currently offers capital grant application programs that Ontario school boards can apply to for capital funding. The LKDSB, as part of the South Plympton and Wyoming Public Schools consolidation has discussed the Board’s intent to apply for \$4M to undertake capital work at the consolidated school. The Board is required to have a Board of Trustee supported Accommodation Review decision in order to apply for capital funding. The success of the grant application would be based on the merits of the Board’s capital submission as it compares to grant applications submitted by other Ontario school boards. The recommendation to consolidate at the Wyoming site, if successful, would be undertaken regardless of the success of any capital grant application.

Proposed Student Accommodation Plan

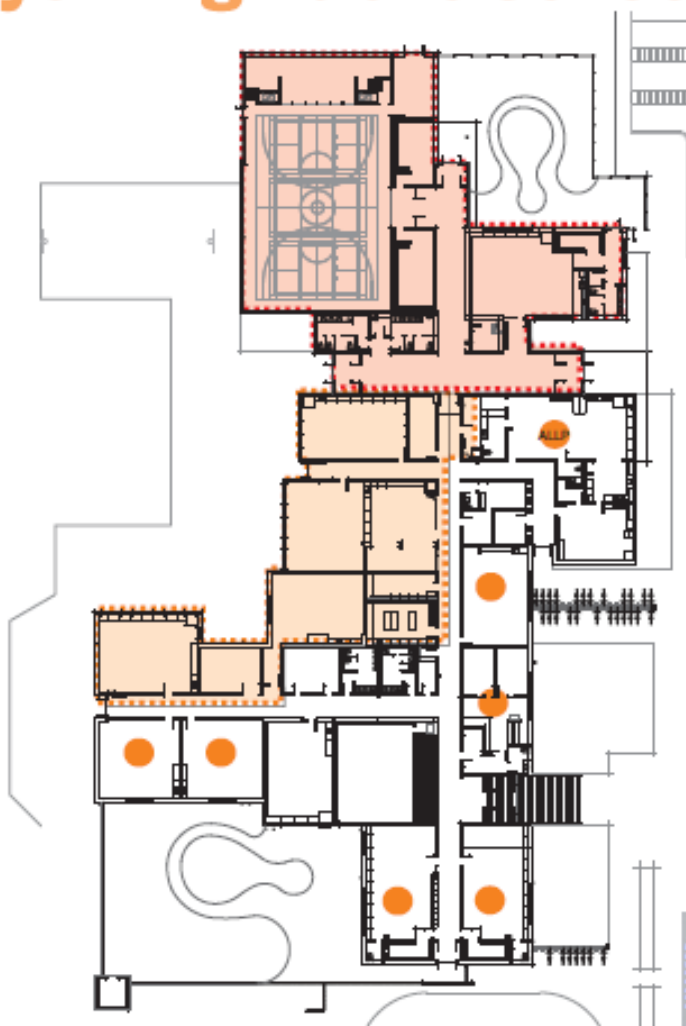
During the 2016/2017 school year both school sites would remain operational. However, school and senior administration would explore classroom organizations that would utilize the same number of homerooms as in a single school site. Please note that these plans cannot be finalized until as late as early September as the number of students may fluctuate throughout the spring and summer. This is similar to all elementary schools in the system. The Wyoming Public School site would be upgraded and improved to accommodate all students in September 2017.

Below are school drawings prepared by ROA Studio Inc. that demonstrate a construction plan by three phases. Students that remain in Wyoming Public School during the 2016/2017 school year would participate in school areas blocked off from the specific construction zone by phase. These diagrams are a recommendation from ROA Studio Inc. and subject to grant approval from the Ministry of Education.

This proposed student accommodation plan is to assure parents that construction can occur on the site while students are in attendance in a safe environment. These diagrams were displayed by ROA at ARC Working Meeting #2 without the inclusion of a phased in process. This plan would negate the need to place portable classrooms on the South Plympton Public School site, find an appropriate space for the ALLP classroom and the need to manage the septic system concerns. These phases are not in any specific order.

Wyoming Public School

PHASING PLAN



- PHASE 1A GYM & DAYCARE ADDITION
OCTOBER 2016 TO AUGUST 2017
- PHASE 1B CLASSROOM ADDITION &
CLASSROOM REFRESH
OCTOBER 2016 TO MARCH BREAK 2017
- OCCUPIED CLASSROOMS

NOTE: PHASING
PROJECT WILL
INCREASE ESTIMATED
BUDGET BY +/- 5%

Information is the confidential or trade secret of the undersigned and is not to be disclosed to any third party without the express written consent of the undersigned. The undersigned warrants that the information is true and correct to the best of its knowledge and belief. The undersigned shall not be held liable for any errors or omissions in this information. The undersigned shall not be held liable for any damages, including consequential damages, arising out of the use of this information. The undersigned shall not be held liable for any damages, including consequential damages, arising out of the use of this information.

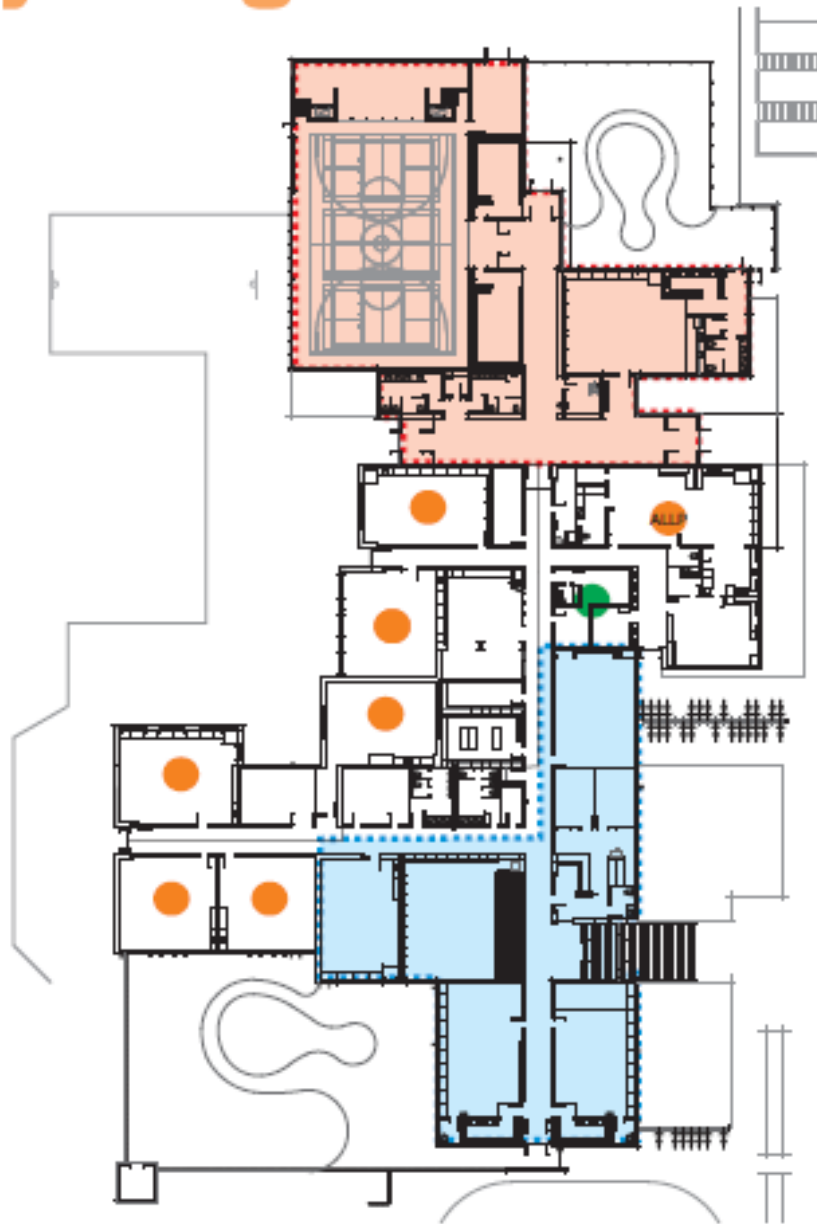


OPTION A

roa studio
ARCHITECTURE

Wyoming Public School

PHASING PLAN



■■■■■ PHASE 1A GYM & DAYCARE ADDITION
OCTOBER 2016 TO AUGUST 2017

■■■■■ PHASE 2 FDK ADDITION &
CLASSROOM REFRESH
MARCH BREAK 2017 TO AUGUST 2017

● OCCUPIED CLASSROOMS

● RELOCATED OFFICE
FOR DURATION OF YEAR

NOTE: PHASING
PROJECT WILL
INCREASE ESTIMATED
BUDGET BY +- 5%

In these and other illustrations we make every possible effort to be as accurate as possible. However, we do not warrant the accuracy of the information provided. We are not responsible for any errors or omissions, or for any consequences arising from the use of the information. We reserve the right to change the information at any time without notice, and we are not liable for any damages or losses, including those caused by third parties, arising from the use of the information.

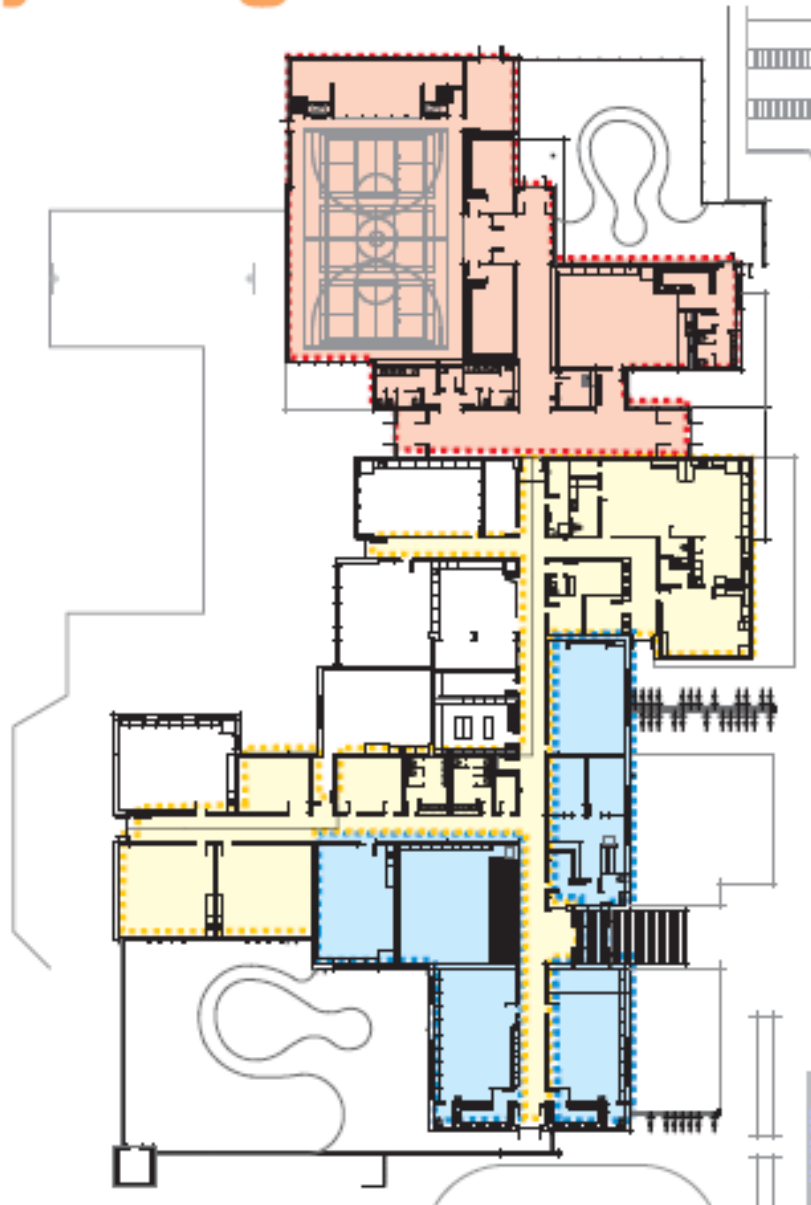
OPTION A



roa **studio**
collective

Wyoming Public School

PHASING PLAN



■■■■■ PHASE 1A GYM & DAYCARE ADDITION
OCTOBER 2016 TO AUGUST 2017

■■■■■ PHASE 2 FDK ADDITION &
CLASSROOM REFRESH
MARCH BREAK 2017 TO AUGUST 2017

■■■■■ PHASE 3 CLASSROOM REFRESH,
RENOVATIONS TO CORRIDORS,
WASHROOM AND ALL SITE WORK
JULY 1 2017 TO AUGUST 2017

NOTE: PHASING
PROJECT WILL
INCREASE ESTIMATED
BUDGET BY ~ 5%

Informational & technical information provided herein is for informational purposes only. It is not intended to constitute an offer of any financial product or service. The information is provided for informational purposes only and is not intended to constitute an offer of any financial product or service. The information is provided for informational purposes only and is not intended to constitute an offer of any financial product or service.

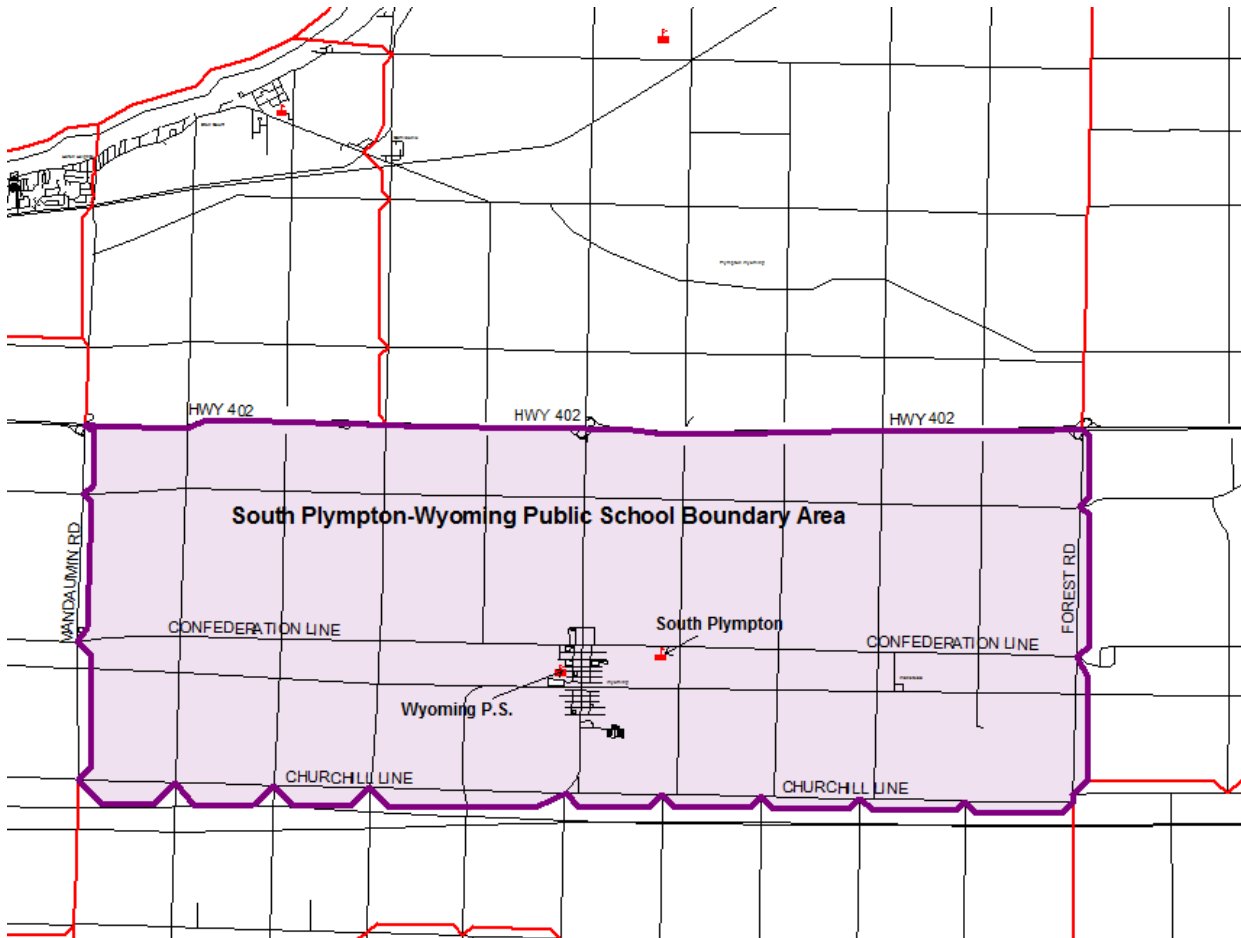
OPTION A



roa studio
ARCHITECTURE

Student Transportation

The existing boundaries for the two schools will be maintained for the consolidated school as outlined in the chart.



Based on preliminary information provided by Chatham-Kent Lambton Administrative School Services (CLASS) Student Transportation Services, and in keeping with the key assumption located on page 18, the consolidation of these schools will allow for transportation service for eligible riders to be provided with a reduction in expenditures.

CLASS will work with the school Principal to establish parameters regarding priority for courtesy applications for the consolidated school. All courtesy seat applications must meet the approved courtesy seat criteria and parameters (found at: <https://www.schoolbusinfo.com/courtesy-login.asp>) however a Kindergarten to Grade 3 priority could be applied to approved applications under the direction of the school Principal. Courtesy bus stops cannot be located within the walk boundary for any school; students are required to meet the school bus at an existing stop or along the path of the bus outside of the walk distance boundary.

Parents expressed a desire to have a crossing guard assigned to the intersection of Broadway Street and Niagara Street. The Town of Plympton-Wyoming has an established process for requesting crossing guards. Their process is initiated by a formal request in writing for their review and consideration. If the Trustees approve the consolidation of the schools at Wyoming Public School site,

CLASS will consult with the school Principal to confirm request details and then submit this formal request to the Town in 2016/17 with a proposed start date to align with the consolidation of the students. A school crossing guard is governed by the rules outlined in the Highway Act which states:
School crossings

176. (1) In this section,

“school crossing guard” means a person sixteen years of age or older who is directing the movement of persons across a highway and who is,

- (a) employed by a municipality, or
- (b) employed by a corporation under contract with a municipality to provide the services of a school crossing guard. R.S.O. 1990, c. H.8, s. 176 (1); 2005, c. 14, s. 1 (1).

School boards are not provided with funding for school crossing guards.

Funding of New Capital Investment, Including Plans if Accommodation Funding is Not Available

If accommodation funding from the Ministry of Education is not available, then the capital focus will be on the renewal and refurbishment of the existing Wyoming Public School site. The LKDSB’s capital funding received under the annual Ministry of Education grant funding can be used to improve and refresh the current student environment however that would leave a disproportionate amount to fund capital projects in other LKDSB schools. Areas of primary concern in this situation would include the upgrading of the Kindergarten classrooms and the increase to ten classrooms to accommodate the consolidated student population in addition to the existing ALLP classroom. As part of the student consolidation at the Wyoming site, a pre-school room and Before and After school program would be included in the child care plan for the site.

It should be noted that any new facility space would still need to be approved by the Ministry of Education even if the LKDSB elects to use its own capital funding.

C.2 Recommendation #2

“That the Board dissolve the Wyoming Area Schools Accommodation Review Committee.”

C.3 Recommendation #3

“That the Board approve the establishment of an Ad Hoc Committee to recommend to the Board a name for the consolidated South Plympton and Wyoming Public Schools and appoint two Trustees to serve on the Committee.”

Rationale

The practice of the Board has been to establish a Naming Committee when schools are consolidated.

In accordance with Board Regulations R-AD-105, when schools are consolidated into one school, the renaming of Board facilities will be followed. This requires the Director of Education to establish an ad hoc committee to recommend a name to the Board.

The Committee is to be comprised of:

- (a) two trustees, appointed by the Board (one to chair the committee),
- (b) one facility administrator (principal or principal designate if applicable),
- (c) two representatives of the School Advisory Councils (if applicable),
- (d) two community representatives,
- (e) one member of the senior administration.

The Committee will submit the recommendation to the Board for approval.

D. Formation of a Transition Committee

If the Board approves the consolidation of the schools, a Transition Committee would be struck to address the transition of students and staff.

Transition Committee membership consists of Superintendent(s) of Education or designates, CUPE, ETFO and OSSTF President/Vice President and from each school Involved - principal, two teachers, School Council Chair, clerical/custodial staff, parent/community member, educational assistant and two students. Subcommittees are developed as needed and may have members that are separate from the Transition Committee members. The Transition Committee would be responsible for such things as school orientation/transition, memorabilia, resources and equipment, special events (including graduation and awards) and extra-curricular activities.

The Accommodation Review process is still underway, with opportunities for public delegations at the May 10, 2016 Board Meeting. Any changes to the Final Staff Report as a result of public delegations, will be included in the Final Staff Report to be presented to Trustees for approval at the May 24, 2016 Board Meeting.

ARC Final Input to LKDSB Administration for inclusion in the Final Staff

APPENDIX A

| | |
|--|--|
| <p>ARC Final Input to LKDSB Administration for inclusion in the Final Staff Report</p> | <ul style="list-style-type: none">• Suggestion: As far as procedure, you should consider bringing in experts earlier in the process. I know that you can't commit to drawings but it reassures people when they can see what the building may look like.• Question: When it comes to selling one of these properties would it not be easier to sell Wyoming PS? Does that get put into your proposal? Answer: That is not part of the capital application. When we sell a property we put the proceeds into our capital funding.• Comment: This has not been about trying to stop the School Board from closing one of our sites. We have never disagreed with this amalgamation. We have only asked that the School Board reconsider the time frame as well as do further research to choose the most adequate school that will provide our children the best educational environment as well as a safe institution to come to every day. Please take the time to review the frequently asked questions, meeting minutes, comments, statements and opinions that our community have stressed. Choosing the better institution is what our main focus has been since January 19 2016!• Suggestion: Site walkthroughs could be 30-60 minutes prior to a Working or Public Meeting. |
|--|--|