

SCHOOL INFORMATION PROFILE

Name of School: Kinnwood Central School

Date: October 20, 2016

Page 1

Facility Profile

- Site plan and floor plan(s) (or space template) of the school with the date of school construction and any subsequent additions.

Site Plan and Floor Plan are attached (pages 8-9).

Year of Construction	Type of Construction	Area (square meters)
1962	Original Building	896
1969	Addition	884
1983	Addition	208
1994	Addition	93
1998	Addition	1,142
2006	Addition (Daycare)	673
Total Building Area		3,896 (41,983 sf)

- School attendance area (boundary) map

Map is attached (page 10).

- Context map (or air photo) of the school indicating the existing land uses surrounding the school.

Map is attached (page 11).

- Planning map of the school with zoning, Official Plan or secondary plan land use designations.

Map is attached (page 12).

Legal Description: 63 Macdonald St, CON 8 PT LOT 3
Municipality of Lambton-Shores

- Size of the school site (acres or hectares)

13.69 Acres
5.54 Hectares

SCHOOL INFORMATION PROFILE

Name of School: Kinnwood Central School

Date: October 20, 2016

Page 2

- Building area (square feet or square metres).

3,896 sm
41,983 sf

- Number of portable classrooms

0

- Number and type of instructional rooms as well as specialized classroom teaching spaces (e.g., science lab, tech shop, gymnasium, etc.).

- Best Start Community Hub (JK/SK room, Early Learning room, Clinical rooms/offices, Kitchen, All-purpose room)
- 2 FDK classrooms, 12 instructional classrooms (11 Gr. 1-8, 1 Resource)
- 1 Gymnasium with stage/storage and divider
- 1 Design and Tech Area (currently closed) – Sewing/Kitchen/Shop/Design and Tech rooms

- Area of hard surfaced outdoor play area and/or green space, the number of play fields, and the presence of outdoor facilities (e.g., tracks, courts for basketball, tennis, etc.).

Area of Hard Surface Play Area: 2,539.61 sm / 27,337 sf

Area of Green Space Play Area: 63,074 sm / 678,945 sf

- Baseball diamond (junior/intermediate yard)
- Pair of soccer posts (junior/intermediate yard)
- 2 sets of playground equipment (1 in primary yard and 1 in junior/intermediate yard)
- 6 swings (junior/intermediate yard)
- 4 teeter totters (junior/intermediate yard)
- 9 basketball nets/ 2 courts (junior/intermediate yard)
- Basketball activity pole (junior/intermediate yard)
- Outdoor Garden

- Ten-year history of major facility improvements (item and cost).

2005	Asphalt Replacement	\$43,279
2007	Best Start Hub / Kindergarten Addition	\$1,547,327
2010	Lighting & Plumbing Fixture Upgrade	\$128,289
2012	Asphalt Replacement	\$31,004
2016	Access Control	\$5,088

SCHOOL INFORMATION PROFILE

Name of School: Kinnwood Central School

Date: October 20, 2016

Page 3

- Projected five-year facility renewal needs of school (item and cost).

Kinnwood

	2016	2017	2018	2019	2020	Totals
Substructure	0	0	0	0	0	0
Shell	302,746	0	0	0	0	302,746
Interiors	89,200	27,679	0	477,412	40,714	635,005
Services	1,624,583	0	0	435,636	6,240	2,066,459
Equipment	0	0	0	0	0	0
Special Construction	0	0	0	0	0	0
Site Work	48,118	0	0	101,388	0	149,506
Totals	2,064,647	27,679	0	1,014,436	46,954	3,153,716

The data above was exported from VFA Facility on October 19, 2016. The format of VFA Facility is a database which is continually being reviewed and updated through regular system maintenance. On going construction and repairs in LKDSB buildings may change the data requirements within VFA Facility. Life cycles of building component data may change as the components are replaced/repaired due to regular building maintenance.

- Current Facility Condition Index (FCI) with a definition of what the index represents.

5-Year: 43.06% \$3.15M to renovate and \$7.3M to replace
 10-Year: 52.97% \$3.88M to renovate and \$7.3M to replace

- A measure of proximity of the students to their existing school, and the average distance to the school for students.

Student Distance (KMs)		
Min	Max	Avg
0.05	16.56	3.45

- Percentage of students that are and are not eligible for transportation under the school board policy, and the length of bus ride to the school (longest, shortest, and average length of bus ride times).

Eligibility (%)		Ride Time (Minutes)					
		AM			PM		
Bused	Not Bused	Min	Max	Avg	Min	Max	Avg
34.64%	65.36%	4	52	19.81	3	42	13.17

SCHOOL INFORMATION PROFILE

Name of School: Kinnwood Central School

Date: October 20, 2016

Page 4

- School utility costs (totals, per square foot, and per student).

Attached (page 13).

- Number of parking spaces on site at the school, an assessment of the adequacy of parking, and bus/car access and egress.

35 parking spaces plus 1 accessible parking space. Currently meets safety/accessibility needs of staff and visitors.

- Measures that the school board has identified and/or addressed for accessibility of the school for students, staff, and the public with disabilities (i.e., barrier-free).

All areas of the building are barrier-free. Automatic door located at Best Start and Main school front entrance.

- On-the-ground (OTG) capacity, and surplus/shortage of pupil places

On-the-ground (OTG) capacity:	331
September 14, 2016 enrolment:	278
Capacity utilization:	84%

Surplus pupil spaces:	53
-----------------------	----

SCHOOL INFORMATION PROFILE

Name of School: *Kinnwood Central School*

Date: *October 20, 2016*

Page 5

Instructional Profile

- Describe the number and type of teaching staff, non-teaching staff, support staff, itinerant staff, and administrative staff at the school.

Kinnwood Teaching Staff

- 21 teaching staff (15.6 FTE - 16 teachers, 2 Early Childhood Educators, 3 Educational Assistants)
- 1 Principal
- 1 Secretary to Elementary Principal
- 4 Custodial staff

- Describe the course and program offerings at the school.

Ontario Curriculum programming FDK-Grade 8.

- Describe the specialized service offerings at the school (e.g., cooperative placements, guidance counseling, etc.).

No additional specialized programming provided at site.

- Current grade configuration of the school (e.g., junior kindergarten to Grade 6, junior kindergarten to Grade 12, etc.).

FDK- Grade 8.

- Current grade organization of the school (e.g., number of combined grades, etc.).

12 classes:

- 2 – FDK
- Grade 1
- Grade 1/2
- Grade 2
- Grade 2/3
- Grade 3/4
- Grade 4/5
- Grade 5/6
- Grade 6
- Grade 7
- Grade 8

SCHOOL INFORMATION PROFILE

Name of School: Kinnwood Central School

Date: October 20, 2016

Page 6

○ Number of out of area students.

6

○ Utilization factor/classroom usage.

As of September 14, 2016 there have been 4 classrooms closed out of a total of 14 classrooms, with capacity at 84% (278/331).

○ Summary of five previous years' enrolment and 10-year enrolment projection by grade and program.

Attached (page 14).

○ Current extracurricular activities.

- LKESAA intermediate sports (cross-country, Soccer, Basketball Volleyball, Track and Field)
- Intramurals – Junior/Intermediate house colour activities/sports
- Equity and Inclusion and Character Education activities
- Tech Club, Reading Club, Gauss Math Club, Public Speaking Club, Yearbook Club, Cody Crafters Club,
Primary Choir, Running Club, Lunch/Bus/Playground monitors, Games Club
- Terry Fox Run
- FCC food drive
- Jump Rope for Heart

SCHOOL INFORMATION PROFILE

Name of School: *Kinnwood Central School*

Date: *October 20, 2016*

Page 7

Other School Use Profile

- Current non-school programs or services resident at or co-located with the school as well as any revenue from these non-school programs or services and whether or not it is at full cost recovery.

Best Start Hub/North Lambton Child Care.

- Current facility partnerships as well as any revenue from the facility partnerships and whether or not it is at full cost recovery.

Best Start Hub/North Lambton Child Care.

- Community use of the school as well as any revenue from the community use of the school and whether or not it is at full cost recovery.

Attached (page 15).

- Availability of before and after school programs or services (e.g., child care) as well as any revenue from the before and after school programs and whether or not it is at full cost recovery.

Best Start Hub services (6,864 sf @ \$8.25)	\$56,628.00
Before and After School program	<u>500.00</u>
Total revenue for 2016-17	\$57,128.00

- Lease terms at the school as well as any revenue from the lease and whether or not it is at full cost recovery.

None.

- Description of the school's suitability for facility partnerships.

There are 4 classrooms that have been closed that could be used for facility partnerships. No interest has been expressed.

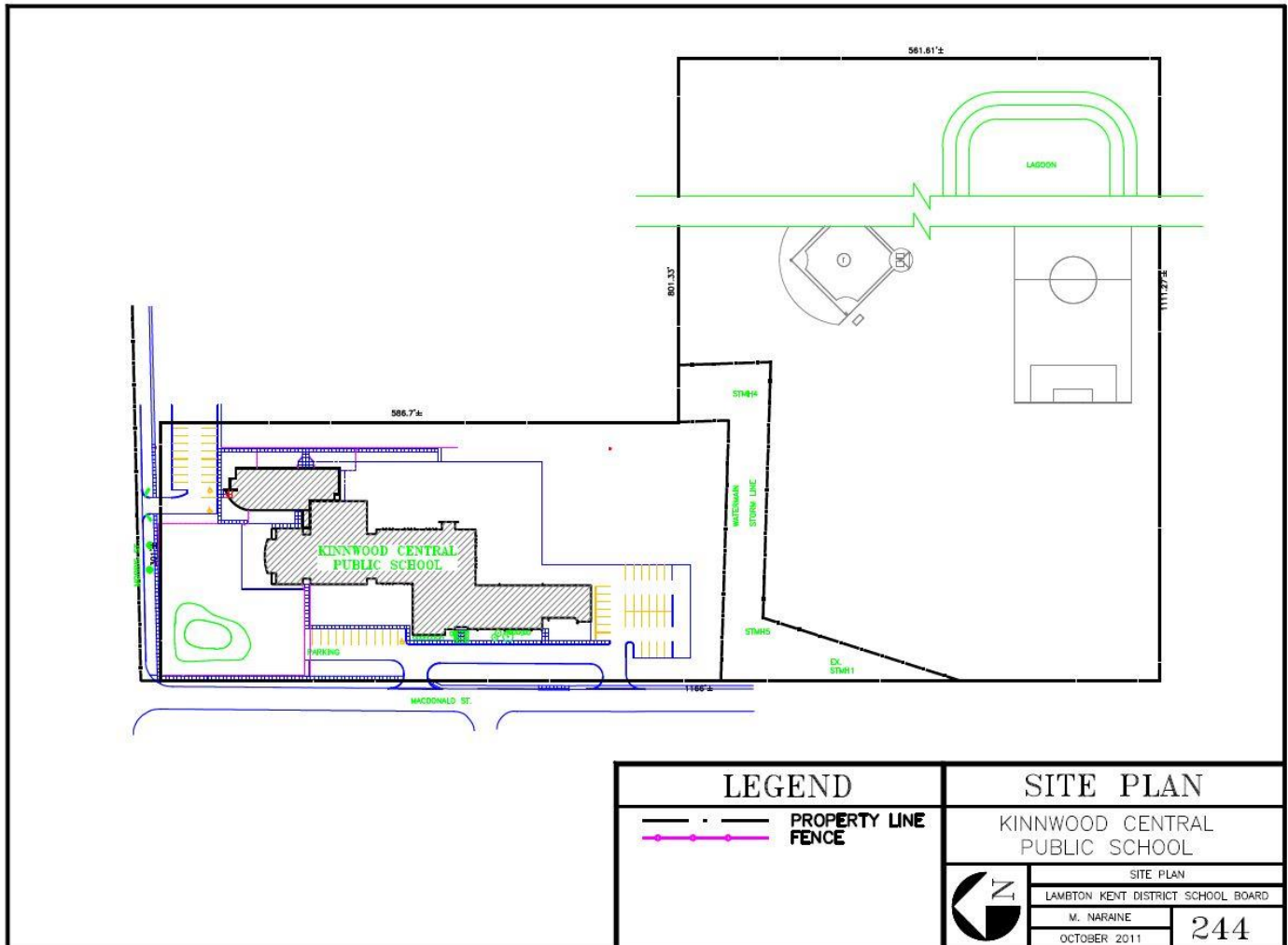
SCHOOL INFORMATION PROFILE

Name of School: Kinnwood Central School

Date: October 20, 2016

Page 8

Site Plan



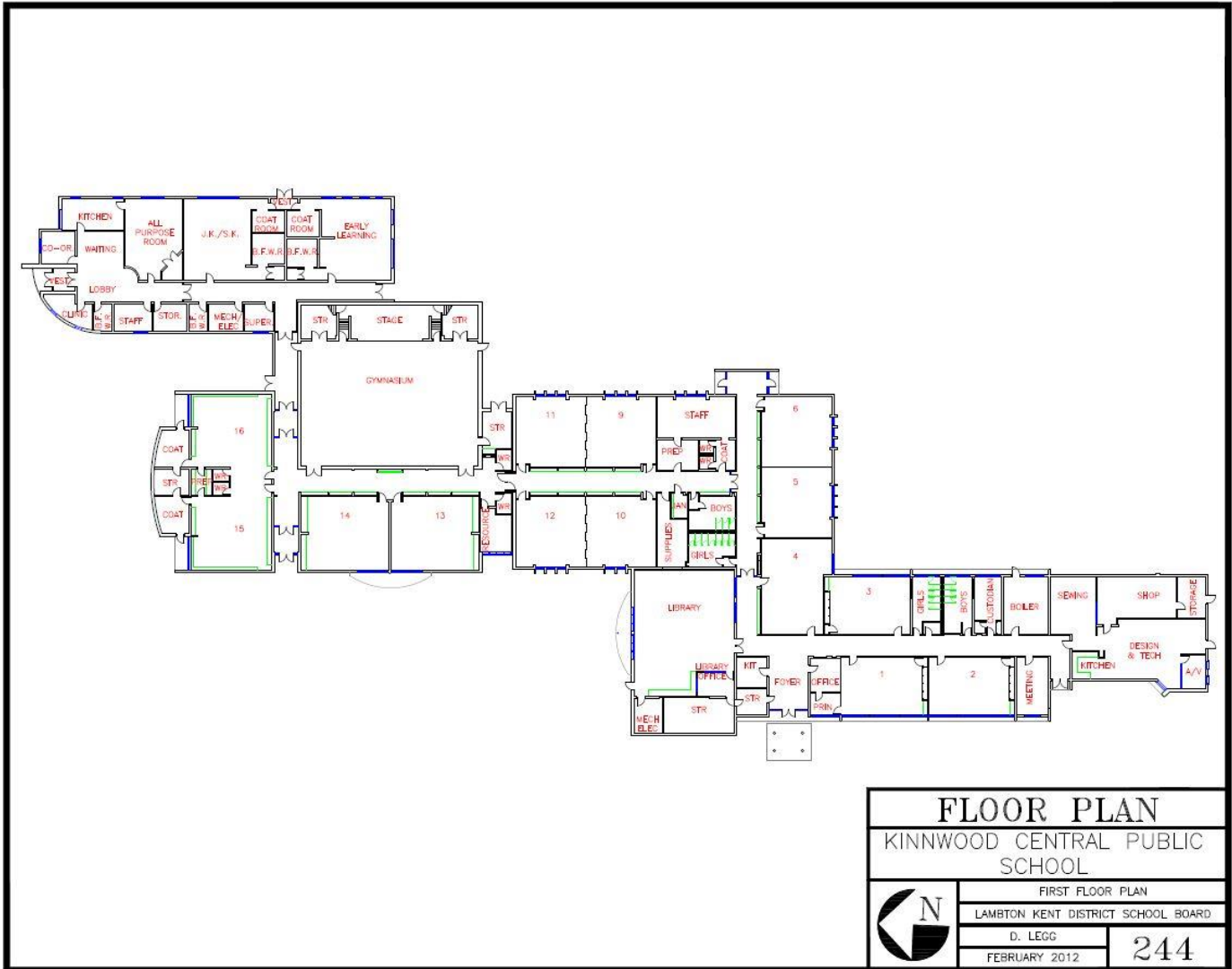
SCHOOL INFORMATION PROFILE

Name of School: *Kinnwood Central School*

Date: *October 20, 2016*

Page 9

Floor Plan



FLOOR PLAN	
KINNWOOD CENTRAL PUBLIC SCHOOL	
	FIRST FLOOR PLAN
	LAMBTON KENT DISTRICT SCHOOL BOARD
	D. LEGG
FEBRUARY 2012	244

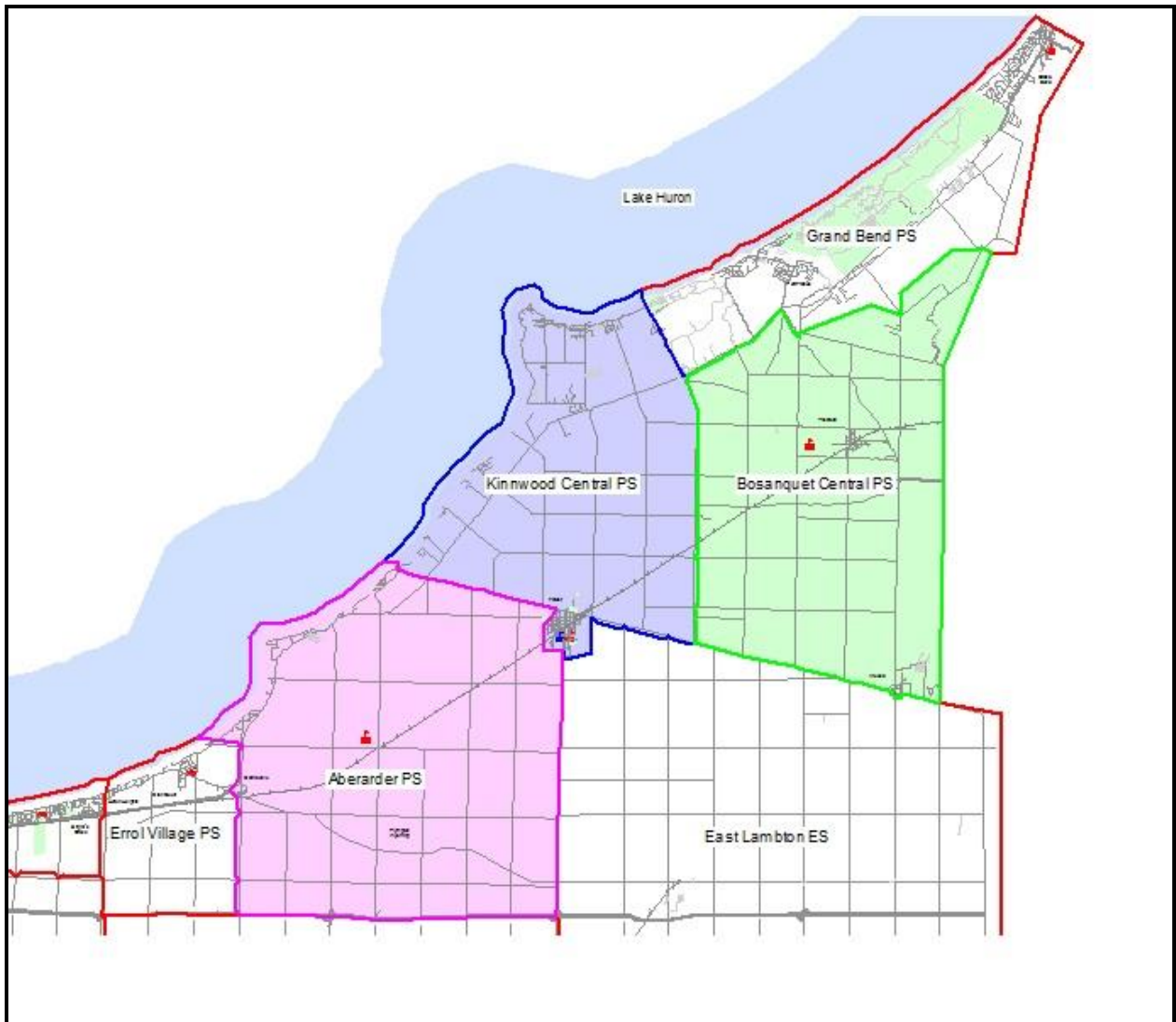
SCHOOL INFORMATION PROFILE

Name of School: *Kinnwood Central School*

Date: *October 20, 2016*

Page 10

Boundary Map



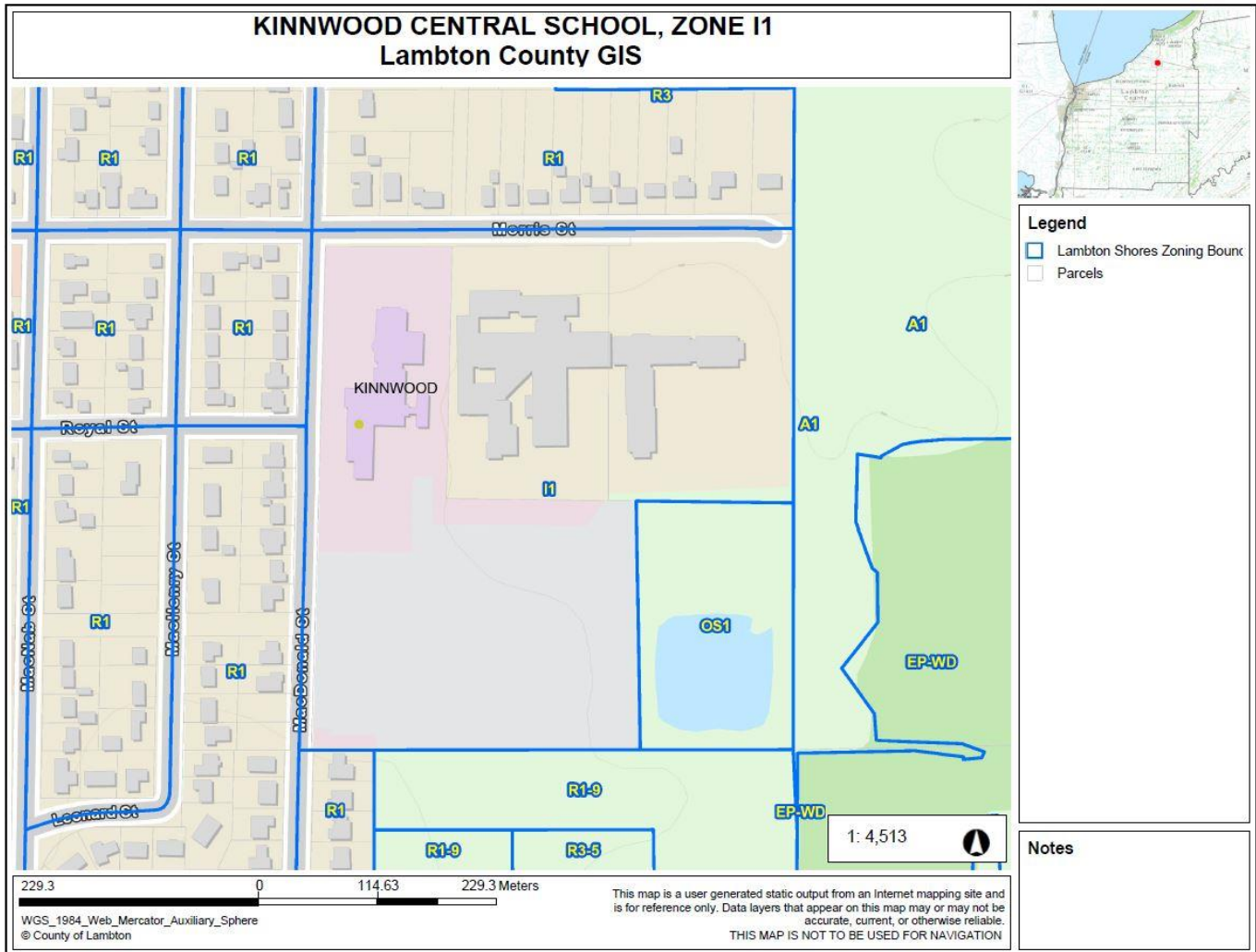
SCHOOL INFORMATION PROFILE

Name of School: Kinnwood Central School

Date: October 20, 2016

Page 12

Zoning Map



SCHOOL INFORMATION PROFILE

Name of School: Kinnwood Central School

Date: October 20, 2016

Page 13

Utility Costs

Month	Kinnwood		
	Hydro	Heat (Gas)	Water
September 2015	\$ 4,987.59	\$ 221.27	
October 2015	3,657.02	1,688.56	
November 2015	4,124.43	1,808.89	3,675.96
December 2015	4,384.25	2,487.72	
January 2016	4,366.99	3,628.85	
February 2016	3,995.26	3,394.55	2,618.08
March 2016	3,728.03	2,356.03	
April 2016	4,272.11	2,114.97	
May 2016	4,746.20	703.79	2,754.38
June 2016	5,338.86	205.90	
July 2016	4,379.53	163.02	
August 2016	4,868.51	155.78	1,832.88
Totals:	\$ 52,848.78	\$ 18,929.33	\$ 10,881.30
Per Square Metre:			
3896	\$ 13.56	\$ 4.86	\$ 2.79
Per Student:			
278	\$ 190.10	\$ 68.09	\$ 39.14

SCHOOL INFORMATION PROFILE

Name of School: *Kinnwood Central School*

Date: *October 20, 2016*

Page 14

Enrolment History and Projections

Kinnwood Central Public School

5 Year Enrolment History

Grade	2011	2012	2013	2014	2015
JK	28	26	27	32	27
K	25	29	26	28	35
1	25	24	30	28	25
2	24	25	26	27	28
3	30	24	28	25	28
4	26	29	25	29	24
5	33	25	26	21	32
6	24	32	25	27	20
7	27	25	32	27	29
8	29	30	25	30	25
Total	271	269	270	274	273

Current Enrolment – September 14, 2016

Year	JK	K	1	2	3	4	5	6	7	8	Total
2016	30	26	36	26	28	30	23	30	21	28	278

10 Year Enrolment Projections

Grade	2017	2018	2019	2020	2021	2022	2023	2024	2025	2026
JK	20	18	21	22	21	22	21	22	21	22
K	30	23	20	24	25	24	25	24	25	24
1	30	29	23	20	23	24	23	24	23	24
2	34	30	29	22	19	23	24	23	24	23
3	25	34	29	28	22	19	23	24	23	24
4	28	24	34	29	28	22	19	23	24	23
5	27	27	24	33	28	27	22	19	22	23
6	22	27	26	23	32	27	27	21	18	22
7	31	22	26	26	23	31	27	26	20	18
8	19	29	22	25	25	22	31	26	26	20
Total	266	263	254	252	246	241	242	232	226	223


SCHOOL INFORMATION PROFILE

Name of School: Kinnwood Central School

Date: October 20, 2016

Page 15

Community Use of Schools



CLASS

SHARED SCHOOL SERVICES

STUDENT TRANSPORTATION
 CHILD CARE
 ENERGY & ENVIRONMENTAL
 COMMUNITY USE OF SCHOOLS

LKDSB COMMUNITY USE OF SCHOOLS REPORT
for Kinnwood Central School

The tables below contain 2015-16 data from the CLASS school rental booking software.

PROJECTED SEPTEMBER 2015-JUNE 2016 SCHOOL RENTAL PERMITTED HOURS	
Classroom	0
Gymnasium – Single	142
Library	20
TOTAL PERMITTED HOURS	162

PROJECTED SEPTEMBER 2015-JUNE 2016 SCHOOL RENTAL REVENUE	
Paid by rental groups	\$90
Covered by the CUS grant	\$1,373
TOTAL REVENUE	\$1,463

COMMUNITY USE OVERVIEW
Two community groups utilized the school on a weekly basis:

Monday nights – 2:45pm-4pm bible study program
 Wednesday nights - 5:15pm-8:15pm Girl Guide meetings

North Lambton Child Care ran several one day events (annual general meeting, 25th anniversary celebration, Christmas celebration etc.) as well as their staff meetings/training sessions.

600 GILLARD STREET, WALLACEBURG ON N8A 4L3