

## **SCHOOL INFORMATION PROFILE**

Name of School: *Bosanquet Central School*

Date: *October 20, 2016*

Page 1

### **Facility Profile**

- Site plan and floor plan(s) (or space template) of the school with the date of school construction and any subsequent additions.

Site Plan and Floor Plan are attached (pages 8-9).

Year of Construction	Type of Construction	Area (square meters)
1963	Original Building	1,085
1966	Addition	229
1969	Addition	1,241
1995	Addition	214
Total Building Area		2,769 (29,806 sf)

- School attendance area (boundary) map

Map is attached (page 10).

- Context map (or air photo) of the school indicating the existing land uses surrounding the school.

Map is attached (page 11).

- Planning map of the school with zoning, Official Plan or secondary plan land use designations.

Map is attached (page 12).

Legal Description: 8766 Northville Road, CON 5 PT LOT 18  
Municipality of Lambton-Shores

- Size of the school site (acres or hectares)

12.18 Acres  
4.93 Hectares

- Building area (square feet or square metres).

2,769 sm  
28,806 sf

## SCHOOL INFORMATION PROFILE

Name of School: *Bosanquet Central School*

Date: *October 20, 2016*

Page 2

- Number of portable classrooms.

0

- Number and type of instructional rooms as well as specialized classroom teaching spaces (e.g., science lab, tech shop, gymnasium, etc.).

- 14 classrooms
- Gymnasium
- Learning Commons
- Resource Room

- Area of hard surfaced outdoor play area and/or green space, the number of play fields, and the presence of outdoor facilities (e.g., tracks, courts for basketball, tennis, etc.).

Area of Hard Surface Play Area: 4,342.71 sm / 46,746 sf

Area of Green Space Play Area: 31,283.98 sm / 336,749 sf

- Four separate play equipment structures
- Three sets of swings
- Wooden playhouse
- Large open playing field
- Soccer field
- Backstop for baseball
- Tether ball poles
- Sun shelter on stand-alone concrete pad
- Fenced in area with shed for FDK outdoor equipment

- Ten-year history of major facility improvements (item and cost).

2005	Pave Parking Lot	\$30,645
2006	Study Fire Alarm System	\$2,080
2006	Best Start Renovation	\$92,510
2007	Replace plumbing piping, fire alarm system and exterior lighting	\$115,873
2010	Replace boiler, piping and interior lighting	\$768,292
2012	Toilet Replacement	\$7,703
2013	FDK Renovation	\$110,619
2015	Electrical Service Upgrade	\$44,060
2015	Access Control	\$8,376

## SCHOOL INFORMATION PROFILE

Name of School: *Bosanquet Central School*

Date: *October 20, 2016*

Page 3

- Projected five-year facility renewal needs of school (item and cost).

### Bosanquet

	2016	2017	2018	2019	2020	Totals
Substructure	0	0	0	0	0	0
Shell	18,720	0	361,757	119,696	0	500,173
Interiors	12,000	14,560	0	524,449	0	551,009
Services	304,299	211,744	167,027	734,606	192,836	1,610,512
Equipment	0	0	0	0	0	0
Special Construction	112,653	0	0	0	0	112,653
Site Work	381,877	0	0	353,587	0	735,464
<b>Totals</b>	<b>829,549</b>	<b>226,304</b>	<b>528,784</b>	<b>1,732,338</b>	<b>192,836</b>	<b>3,509,811</b>

The data above was exported from VFA Facility on October 19, 2016. The format of VFA Facility is a database which is continually being reviewed and updated through regular system maintenance. On going construction and repairs in LKDSB buildings may change the data requirements within VFA Facility. Life cycles of building component data may change as the components are replaced/repared due to regular building maintenance.

- Current Facility Condition Index (FCI) with a definition of what the index represents.

5-Year:     46.53%           \$3.4M to renovate and \$7.3M to replace  
 10-Year:    52.96%           \$3.9M to renovate and \$7.3M to replace

- A measure of proximity of the students to their existing school, and the average distance to the school for students.

Student Distance (KMs)		
Min	Max	Avg
2.54	14.58	6.58

- Percentage of students that are and are not eligible for transportation under the school board policy, and the length of bus ride to the school (longest, shortest, and average length of bus ride times).

Eligibility (%)		Ride Time (Minutes)					
		AM			PM		
Bused	Not Bused	Min	Max	Avg	Min	Max	Avg
96.22%	3.78%	5	32	12.76	3	31	11.48

## **SCHOOL INFORMATION PROFILE**

*Name of School: Bosanquet Central School*

*Date: October 20, 2016*

*Page 4*

- School utility costs (totals, per square foot, and per student).

Attached (page 13).

- Number of parking spaces on site at the school, an assessment of the adequacy of parking, and bus/car access and egress.

28 parking spaces plus 1 accessible parking space.

Drive-through lane in front of school used primarily for bussing and pick-up/deliveries requires new asphalt.

- Measures that the school board has identified and/or addressed for accessibility of the school for students, staff, and the public with disabilities (i.e., barrier-free).

Most areas of the building are barrier free. The only automatic door is the front external door. The east exit corridor door has a step-up concrete porch.

- On-the-ground (OTG) capacity, and surplus/shortage of pupil places

On-the-ground (OTG) capacity: 328

September 14, 2016 enrolment: 184

Capacity utilization: 56%

Surplus pupil spaces: 144

## **SCHOOL INFORMATION PROFILE**

Name of School: *Bosanquet Central School*

Date: *October 20, 2016*

Page 5

### **Instructional Profile**

- Describe the number and type of teaching staff, non-teaching staff, support staff, itinerant staff, and administrative staff at the school.

**Bosanquet staff**

- 13 (or 10.8 FTE) teaching staff
- 2 Educational Assistants
- 2 Early Childhood Educators
- 1 principal
- 1 secretary

**Non-LKDSB staff**

- Child and Youth Worker
- 2 contract custodian

- Describe the course and program offerings at the school.

FDK – Grade 8 classes.

- Describe the specialized service offerings at the school (e.g., cooperative placements, guidance counseling, etc.).

- Breakfast/Snack Program
- Child and Youth Worker Services
- Mentors through Big Brothers

- Current grade configuration of the school (e.g., junior kindergarten to Grade 6, junior kindergarten to Grade 12, etc.).

Junior Kindergarten to Grade 8.

- Current grade organization of the school (e.g., number of combined grades, etc.).

- 2 – FDK Classes
- 1 – Grade 1
- 1 – Grade 2
- 1 – Grade 3/4
- 1 – Grade 4/5
- 1 – Grade 5/6
- 1 – Grade 7/8

## SCHOOL INFORMATION PROFILE

Name of School: *Bosanquet Central School*

Date: *October 20, 2016*

Page 6

---

<p>○ Number of out of area students.</p> <p>8</p>
<p>○ Utilization factor/classroom usage.</p> <p>Capacity utilization: 56%</p> <p>5 classrooms have been closed.</p>
<p>○ Summary of five previous years' enrolment and 10-year enrolment projection by grade and program.</p> <p>Enrolment history and projections are attached (page 14).</p>
<p>○ Current extracurricular activities.</p> <p><b>School Clubs</b></p> <ul style="list-style-type: none"><li>- Music Club</li><li>- Student Activity Council / Equity and Inclusion</li></ul> <p><b>School Athletics</b></p> <ul style="list-style-type: none"><li>- Basketball</li><li>- Cross Country</li><li>- Soccer</li><li>- Track and Field</li><li>- Volleyball</li></ul> <p><b>School Events</b></p> <ul style="list-style-type: none"><li>- Spring Concert</li><li>- Year-end Awards Assembly</li><li>- Graduation</li><li>- Monthly Character Assemblies</li><li>- Christmas Dinner and Skate</li><li>- Sarnia Sting Reading Challenge</li></ul>

## **SCHOOL INFORMATION PROFILE**

*Name of School: Bosanquet Central School*

*Date: October 20, 2016*

*Page 7*

### **Other School Use Profile**

- Current non-school programs or services resident at or co-located with the school as well as any revenue from these non-school programs or services and whether or not it is at full cost recovery.

None.

- Current facility partnerships as well as any revenue from the facility partnerships and whether or not it is at full cost recovery.

None.

- Community use of the school as well as any revenue from the community use of the school and whether or not it is at full cost recovery.

Attached (page 15).

- Availability of before and after school programs or services (e.g., child care) as well as any revenue from the before and after school programs and whether or not it is at full cost recovery.

None.

- Lease terms at the school as well as any revenue from the lease and whether or not it is at full cost recovery.

None.

- Description of the school's suitability for facility partnerships.

There are 5 classrooms that have been closed that could be used for facility partnerships. No interest has been expressed.

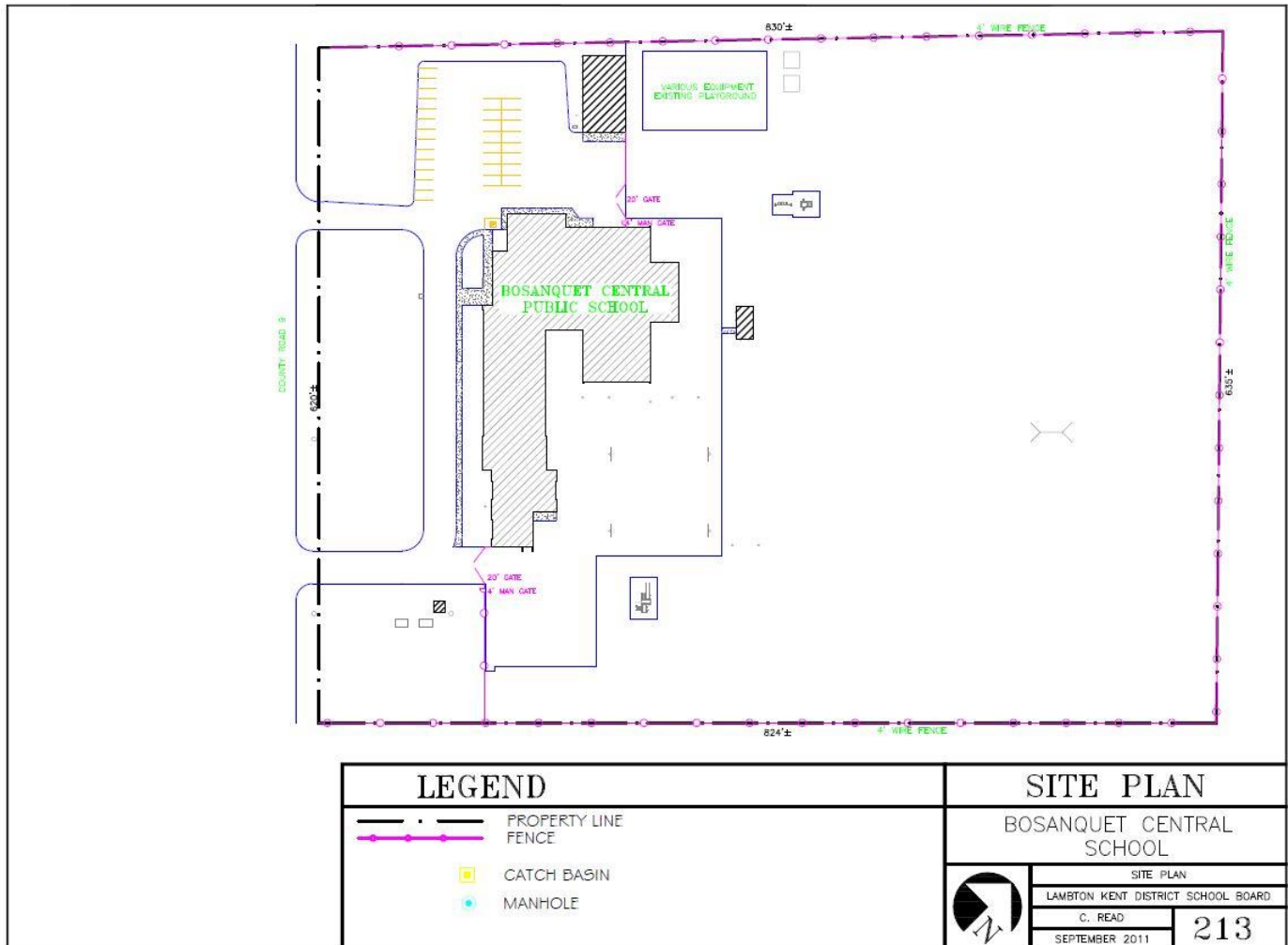
## SCHOOL INFORMATION PROFILE

Name of School: *Bosanquet Central School*

Date: *October 20, 2016*

Page 8

### Site Plan





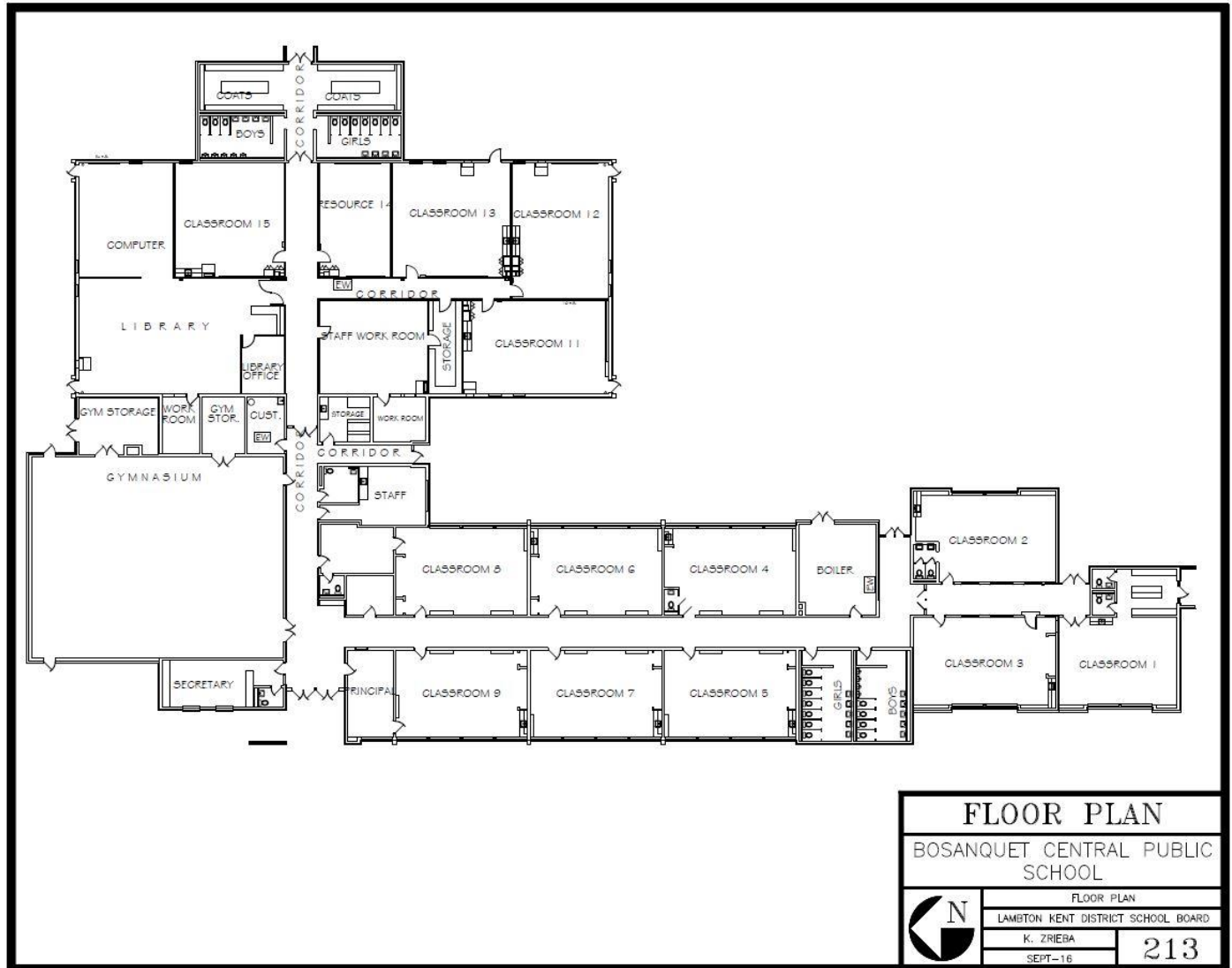
## SCHOOL INFORMATION PROFILE

Name of School: *Bosanquet Central School*

Date: *October 20, 2016*

Page 9

### Floor Plan



## SCHOOL INFORMATION PROFILE

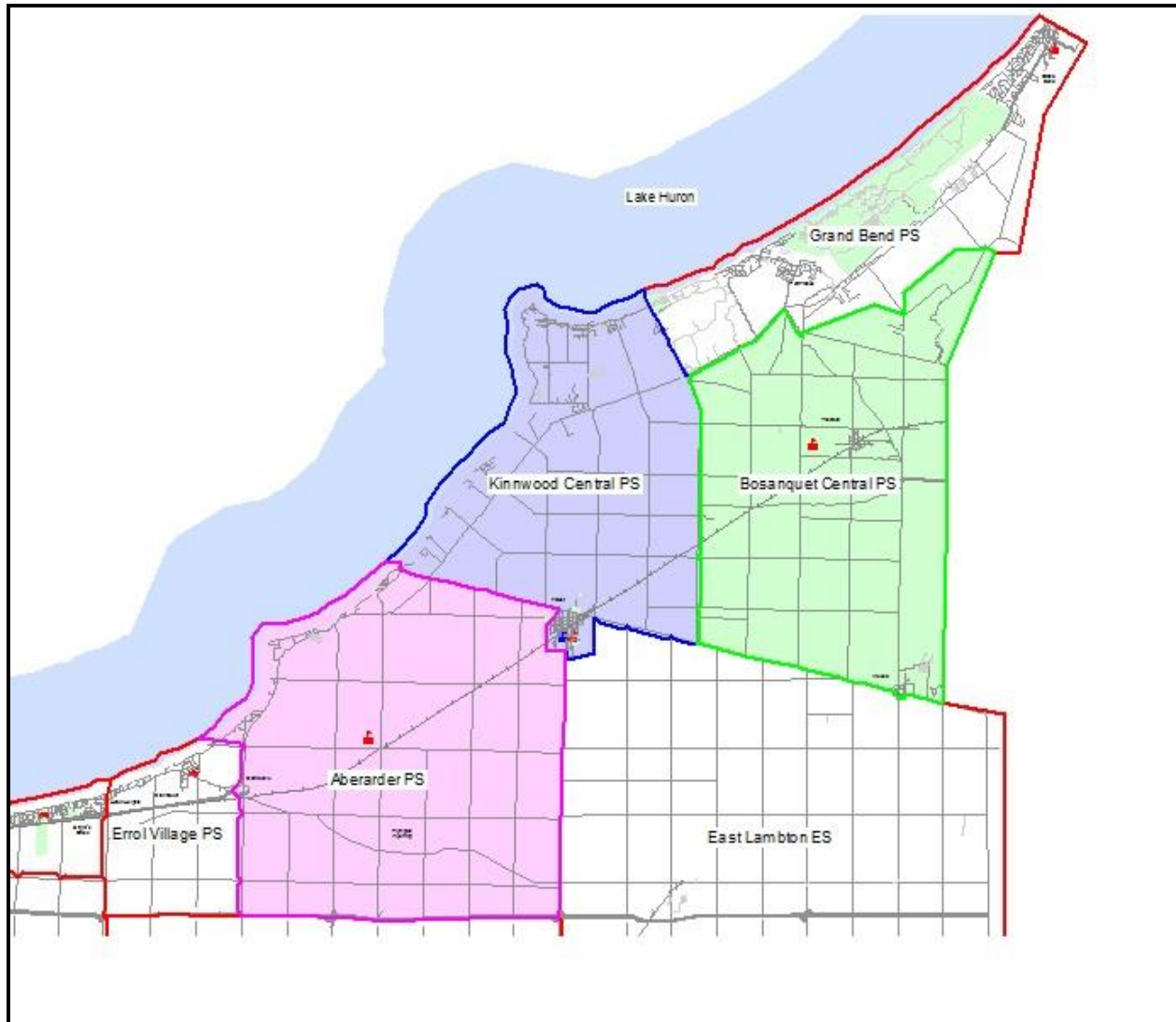
Name of School: *Bosanquet Central School*

Date: *October 20, 2016*

Page 10

---

### Boundary Map



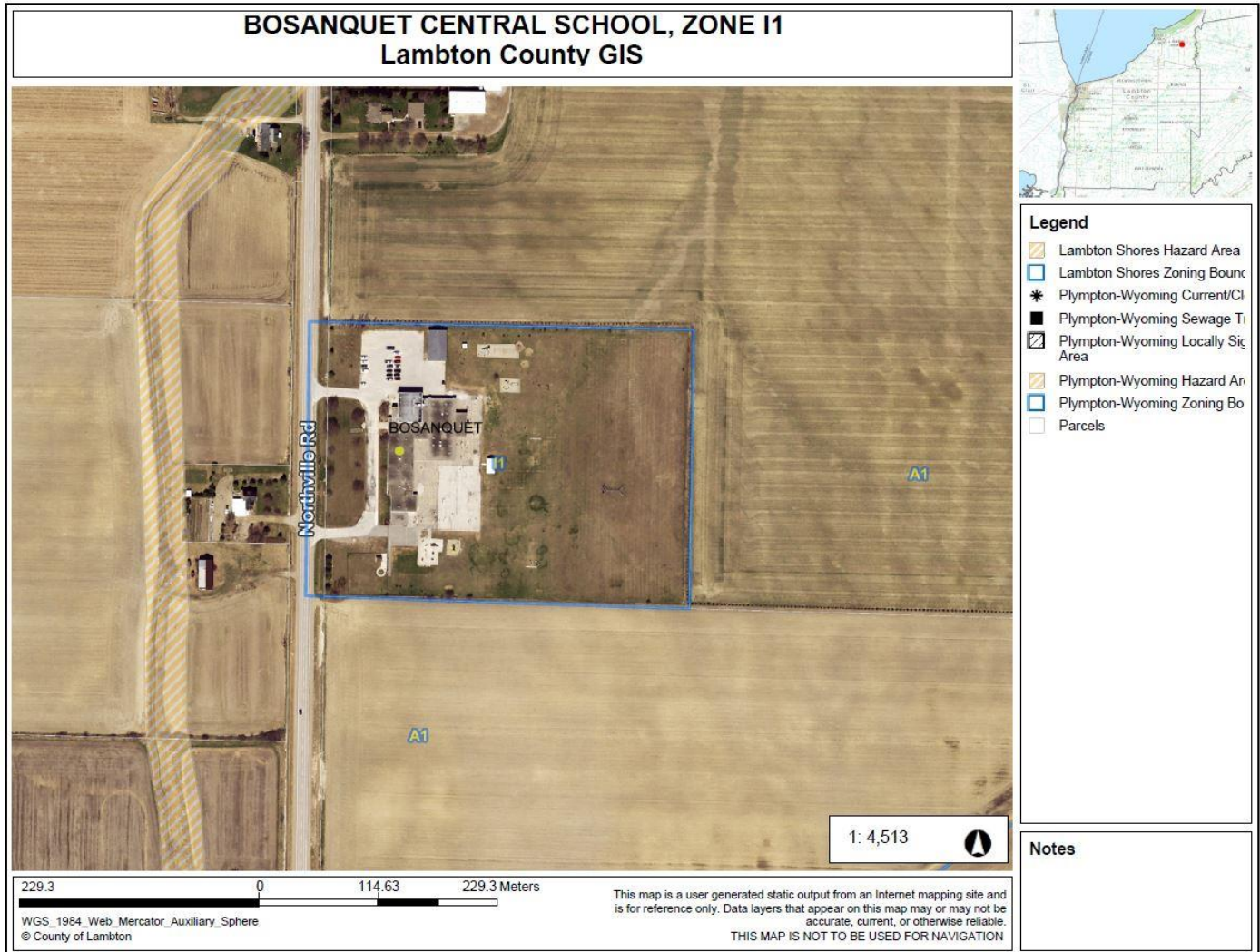
## SCHOOL INFORMATION PROFILE

Name of School: *Bosanquet Central School*

Date: *October 20, 2016*

Page 11

### Aerial Map



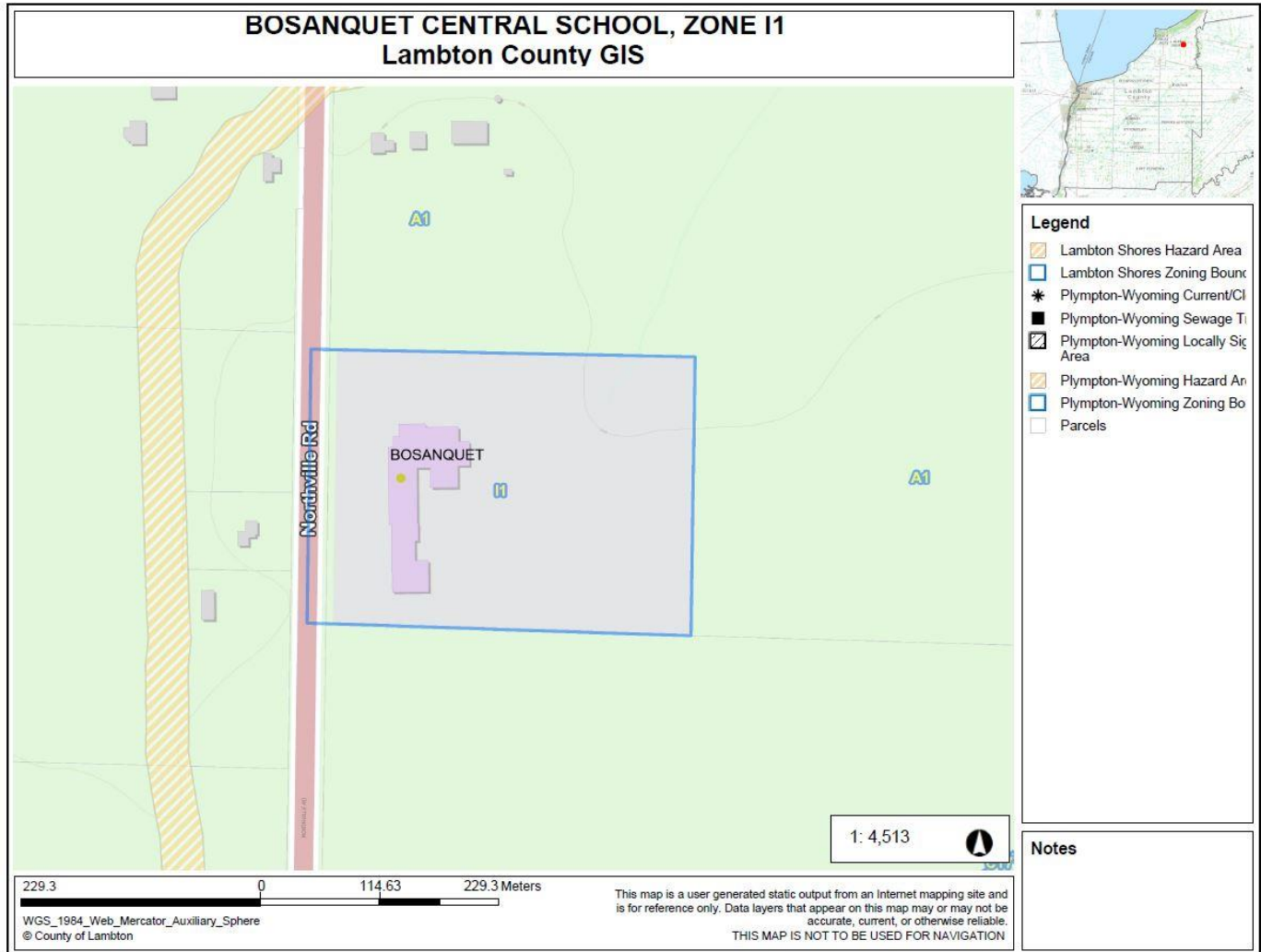
## SCHOOL INFORMATION PROFILE

Name of School: *Bosanquet Central School*

Date: *October 20, 2016*

Page 12

### Zoning Map





## SCHOOL INFORMATION PROFILE

Name of School: *Bosanquet Central School*

Date: *October 20, 2016*

Page 13

### Utility Costs

Month	Bosanquet		
	Hydro	Heat (Gas)	Water
September 2015	\$ 1,896.53	\$ 201.94	\$ 782.64
October 2015	2,110.14	893.26	
November 2015	2,876.14	1,129.11	
December 2015	3,020.42	1,771.08	830.44
January 2016	2,897.98	2,379.72	
February 2016	3,166.56	2,249.44	
March 2016		1,836.75	940.23
April 2016	2,501.55	1,302.47	
May 2016	3,283.48	720.60	
June 2016	3,651.00	222.39	948.75
July 2016	2,864.80	130.91	
August 2016	2,272.86	124.48	
Totals:	\$ 30,541.46	\$ 12,962.15	\$ 3,502.06
Per Square Metre:			
2769	\$ 11.03	\$ 4.68	\$ 1.26
Per Student:			
184	\$ 165.99	\$ 70.45	\$ 19.03

## **SCHOOL INFORMATION PROFILE**

Name of School: *Bosanquet Central School*

Date: *October 20, 2016*

Page 14

### Enrolment History and Projections

#### **Bosanquet Central School**

##### **5 Year Enrolment History**

Grade	2011	2012	2013	2014	2015
JK	16	12	18	20	21
K	20	17	16	15	21
1	15	18	18	17	18
2	20	15	18	19	17
3	10	22	14	18	21
4	19	11	21	14	21
5	13	18	11	19	15
6	14	14	16	11	18
7	19	15	15	15	12
8	19	20	15	13	14
<b>Total</b>	<b>165</b>	<b>162</b>	<b>162</b>	<b>161</b>	<b>178</b>

##### **Current Enrolment – September 14, 2016**

Year	JK	K	1	2	3	4	5	6	7	8	Total
2016	20	24	20	17	18	21	22	14	18	10	184

##### **10 Year Enrolment Projections**

Grade	2017	2018	2019	2020	2021	2022	2023	2024	2025	2026
JK	12	16	14	14	14	14	14	14	14	14
K	17	12	16	13	13	13	13	13	13	13
1	21	18	13	17	14	14	14	14	14	14
2	22	22	18	13	17	14	14	14	14	14
3	19	22	23	19	13	17	14	14	14	14
4	17	19	23	23	19	14	18	14	14	14
5	22	18	19	23	23	19	14	18	14	14
6	21	22	18	19	24	23	19	14	18	15
7	15	21	22	18	19	24	24	20	14	18
8	18	15	22	22	18	19	24	24	20	14
<b>Total</b>	<b>184</b>	<b>185</b>	<b>188</b>	<b>181</b>	<b>174</b>	<b>171</b>	<b>168</b>	<b>159</b>	<b>149</b>	<b>144</b>


## SCHOOL INFORMATION PROFILE

Name of School: *Bosanquet Central School*

Date: *October 20, 2016*

Page 15

### Community Use of Schools



**CLASS**  
SHARED SCHOOL SERVICES

STUDENT TRANSPORTATION  
CHILD CARE  
ENERGY & ENVIRONMENTAL  
COMMUNITY USE OF SCHOOLS

**LKDSB COMMUNITY USE OF SCHOOLS REPORT**  
for Bosanquet Central School

The tables below contain 2015-16 data from the CLASS school rental booking software.

SEPTEMBER 2015-JUNE 2016 SCHOOL RENTAL PERMITTED HOURS	
Classroom	0
Gymnasium – Single	0
Library	0
<b>TOTAL PERMITTED HOURS</b>	<b>0</b>

SEPTEMBER 2015-JUNE 2016 SCHOOL RENTAL REVENUE	
Paid by rental groups	0
Covered by the CUS grant	0
<b>TOTAL REVENUE</b>	<b>0</b>

**COMMUNITY USE OVERVIEW:**  
None to report

600 GILLARD STREET, WALLACEBURG ON N8A 4L3