

## SCHOOL INFORMATION PROFILE

Name of School: *Aberarder Central School*

Date: *October 20, 2016*

Page 1

### Facility Profile

- Site plan and floor plan(s) (or space template) of the school with the date of school construction and any subsequent additions.

Site Plan and Floor Plan are attached (pages 8-9).

| Year of Construction | Type of Construction | Area (square meters) |
|----------------------|----------------------|----------------------|
| 1963                 | Original Building    | 1,349                |
| 1967                 | Addition             | 347                  |
| Total Building Area  |                      | 1,696 (18,256 sf)    |

- School attendance area (boundary) map

Map is attached (page 10).

- Context map (or air photo) of the school indicating the existing land uses surrounding the school.

Map is attached (page 11).

- Planning map of the school with zoning, Official Plan or secondary plan land use designations.

Map is attached (page 12).

Legal Description: 4804 Aberarder Line, CON 11 W PT LOT 18  
Plympton-Wyoming Township

- Size of the school site (acres or hectares)

8.599 Acres  
3.48 Hectares

- Building area (square feet or square meters).

1696 sm  
18,256 sf

- Number of portable classrooms.

0

## SCHOOL INFORMATION PROFILE

Name of School: *Aberarder Central School*

Date: *October 20, 2016*

Page 2

- Number and type of instructional rooms as well as specialized classroom teaching spaces (e.g., science lab, tech shop, gymnasium, etc.).

- 6 Classrooms
- 1 French/Prep Classroom
- 1 Resource Room
- 1 Itinerant Office
- 1 Library
- 1 Gymnasium with stage, equipment room and Kitchen area
- 1 Staff Room
- 2 Storage areas for supplies 1 for FDK, 1 for grade 1-8
- Teacher Workroom
- Custodian's Office
- Custodial Supply Room

- Area of hard surfaced outdoor play area and/or green space, the number of play fields, and the presence of outdoor facilities (e.g., tracks, courts for basketball, tennis, etc.).

Area of Hard Surface Play Area: 1,767.15 sm / 19,022 sf

Area of Green Space Play Area: 24,140.16 sm / 259,851 sf

- 3 Play fields
- Sand Box
- 4 Soccer posts
- 2 Basketball nets
- 2 Hoop Ball throws
- Large playground climber with monkey bars, 2 slides, fire truck
- 2 Sheds – 1 for FDK toys, 1 for School storage

- Ten-year history of major facility improvements (item and cost).

|      |                                 |           |
|------|---------------------------------|-----------|
| 2005 | Replace Exterior Doors          | \$13,556  |
| 2005 | Replace Boilers                 | \$69,506  |
| 2006 | Replace Lighting and PA System  | \$129,389 |
| 2007 | Partial Roof Replacement        | \$229,853 |
| 2012 | Toilet Replacement              | \$6,130   |
| 2013 | FDK Renovation                  | \$112,915 |
| 2014 | Structural Reinforcing for Snow | \$55,373  |
| 2015 | Access Control                  | \$6,469   |

## SCHOOL INFORMATION PROFILE

Name of School: Aberarder Central School

Date: October 20, 2016

Page 3

### Aberarder Central School: Drinking Water System

Aberarder Central School is the LKDSB's only school with drinking water provided from a well supply. Under the Safe Drinking Water Act, Aberarder's drinking water system is classified as a "Small, Non-Municipal, Non-Residential" system serving a "Designated Facility" and is regulated by O. Reg. 170/03. Ontario Clean Water (OCWA) is our qualified Drinking Water System Operator for Aberarder. OCWA provides management, maintenance and operation services; the service includes 24/7 response to alarm calls.

OCWA's average annual fee over the past four years is \$59,496. Additional costs related to repairs that are over and above routine maintenance are billed separately by time and materials; annual average over the past four years is approximately \$4,500.

- Projected five-year facility renewal needs of school (item and cost).

#### Aberarder

|                      | 2016             | 2017     | 2018     | 2019           | 2020     | Totals           |
|----------------------|------------------|----------|----------|----------------|----------|------------------|
| Substructure         | 0                | 0        | 0        | 0              | 0        | <b>0</b>         |
| Shell                | 50,700           | 0        | 0        | 12,480         | 0        | <b>63,180</b>    |
| Interiors            | 36,161           | 0        | 0        | 464,247        | 0        | <b>500,408</b>   |
| Services             | 1,192,681        | 0        | 0        | 12,174         | 0        | <b>1,204,855</b> |
| Equipment            | 0                | 0        | 0        | 0              | 0        | <b>0</b>         |
| Special Construction | 0                | 0        | 0        | 0              | 0        | <b>0</b>         |
| Site Work            | 140,729          | 0        | 0        | 122,011        | 0        | <b>262,740</b>   |
| <b>Totals</b>        | <b>1,420,271</b> | <b>0</b> | <b>0</b> | <b>610,912</b> | <b>0</b> | <b>2,031,183</b> |

The data above was exported from VFA Facility on October 19, 2016. The format of VFA Facility is a database which is continually being reviewed and updated through regular system maintenance. On going construction and repairs in LKDSB buildings may change the data requirements within VFA Facility. Life cycles of building component data may change as the components are replaced/repared due to regular building maintenance.

- Current Facility Condition Index (FCI) with a definition of what the index represents.

|          |        |  |
|----------|--------|--|
| 5-Year:  | 39.10% | \$2.18M to renovate and \$5.57M to replace |
| 10-Year: | 43.92% | \$2.45M to renovate and \$5.57M to replace |

## SCHOOL INFORMATION PROFILE

Name of School: Aberarder Central School

Date: October 20, 2016

Page 4

- A measure of proximity of the students to their existing school, and the average distance to the school for students.

| Student Distance (KMs) |       |      |
|------------------------|-------|------|
| Min                    | Max   | Avg  |
| 0.30                   | 28.18 | 7.32 |

- Percentage of students that are and are not eligible for transportation under the school board policy, and the length of bus ride to the school (longest, shortest, and average length of bus ride times).

| Eligibility (%) |           | Ride Time (Minutes) |     |       |     |     |       |
|-----------------|-----------|---------------------|-----|-------|-----|-----|-------|
|                 |           | AM                  |     |       | PM  |     |       |
| Bused           | Not Bused | Min                 | Max | Avg   | Min | Max | Avg   |
| 95.73%          | 4.27%     | 2                   | 37  | 12.73 | 2   | 36  | 12.11 |

- School utility costs (totals, per square foot, and per student).

Attached (page 13).

- Number of parking spaces on site at the school, an assessment of the adequacy of parking, and bus/car access and egress.

23 parking spaces plus 1 accessible parking space.

- Measures that the school board has identified and/or addressed for accessibility of the school for students, staff, and the public with disabilities (i.e., barrier-free).

- Accessibility door
- Accessibility ramp
- Accessibility parking spot

- On-the-ground (OTG) capacity, and surplus/shortage of pupil places

On-the-ground (OTG) capacity: 199  
 September 14, 2016 enrolment: 114  
 Capacity utilization: 57%

Surplus pupil spaces: 85

## SCHOOL INFORMATION PROFILE

Name of School: *Aberarder Central School*

Date: *October 20, 2016*

Page 5

### Instructional Profile

- Describe the number and type of teaching staff, non-teaching staff, support staff, itinerant staff, and administrative staff at the school.

- 8 – 1.0 Teaching Staff
- 1 – 1.0 Early Childhood Educator
- 1 – 1.0 Educational Assistant
- 1 – 1.0 Secretary
- 1 - Principal

- Describe the course and program offerings at the school.

Regular FDK – Grade 8 Elementary Program.

- Describe the specialized service offerings at the school (e.g., cooperative placements, guidance counseling, etc.).

- Co-op placements offered to Lambton College ECE, CYW, Social Work Students
- Teaching Staff become Associate Teachers for Practicing Teachers

- Current grade configuration of the school (e.g., junior kindergarten to Grade 6, junior kindergarten to Grade 12, etc.).

FDK – Grade 8.

- Current grade organization of the school (e.g., number of combined grades, etc.).

- FDK
- 1/2
- 3/4
- 4/5
- 6/7
- 7/8

- Number of out of area students.

4 (as of September 14, 2016)

## **SCHOOL INFORMATION PROFILE**

*Name of School: Aberarder Central School*

*Date: October 20, 2016*

*Page 6*

---

○ Utilization factor/classroom usage.

Capacity utilization: 57%

1 classroom has been closed.

○ Summary of five previous years' enrolment and 10-year enrolment projection by grade and program.

Attached (page 14).

○ Current extracurricular activities.

- Cross Country
- Soccer
- Basketball
- VolleyBall
- Track And Field
- Newcombe
- Jump Rope for Heart and Stroke
- Terry Fox
- Aberarder Idol Contest
- Christmas Play
- Free Throw
- Spelling Bee

## **SCHOOL INFORMATION PROFILE**

*Name of School: Aberarder Central School*

*Date: October 20, 2016*

*Page 7*

### **Other School Use Profile**

- Current non-school programs or services resident at or co-located with the school as well as any revenue from these non-school programs or services and whether or not it is at full cost recovery.

None.

- Current facility partnerships as well as any revenue from the facility partnerships and whether or not it is at full cost recovery.

Attached (page 15).

- Community use of the school as well as any revenue from the community use of the school and whether or not it is at full cost recovery.

None.

- Availability of before and after school programs or services (e.g., child care) as well as any revenue from the before and after school programs and whether or not it is at full cost recovery.

Lambton Rural Childcare Before and After School program (1 shared room). As per the lease agreement, there is a \$500 annual fee. This is not full cost recovery.

- Lease terms at the school as well as any revenue from the lease and whether or not it is at full cost recovery.

None.

- Description of the school's suitability for facility partnerships.

There is 1 classroom that has been closed that could be used for facility partnerships. No interest has been expressed.

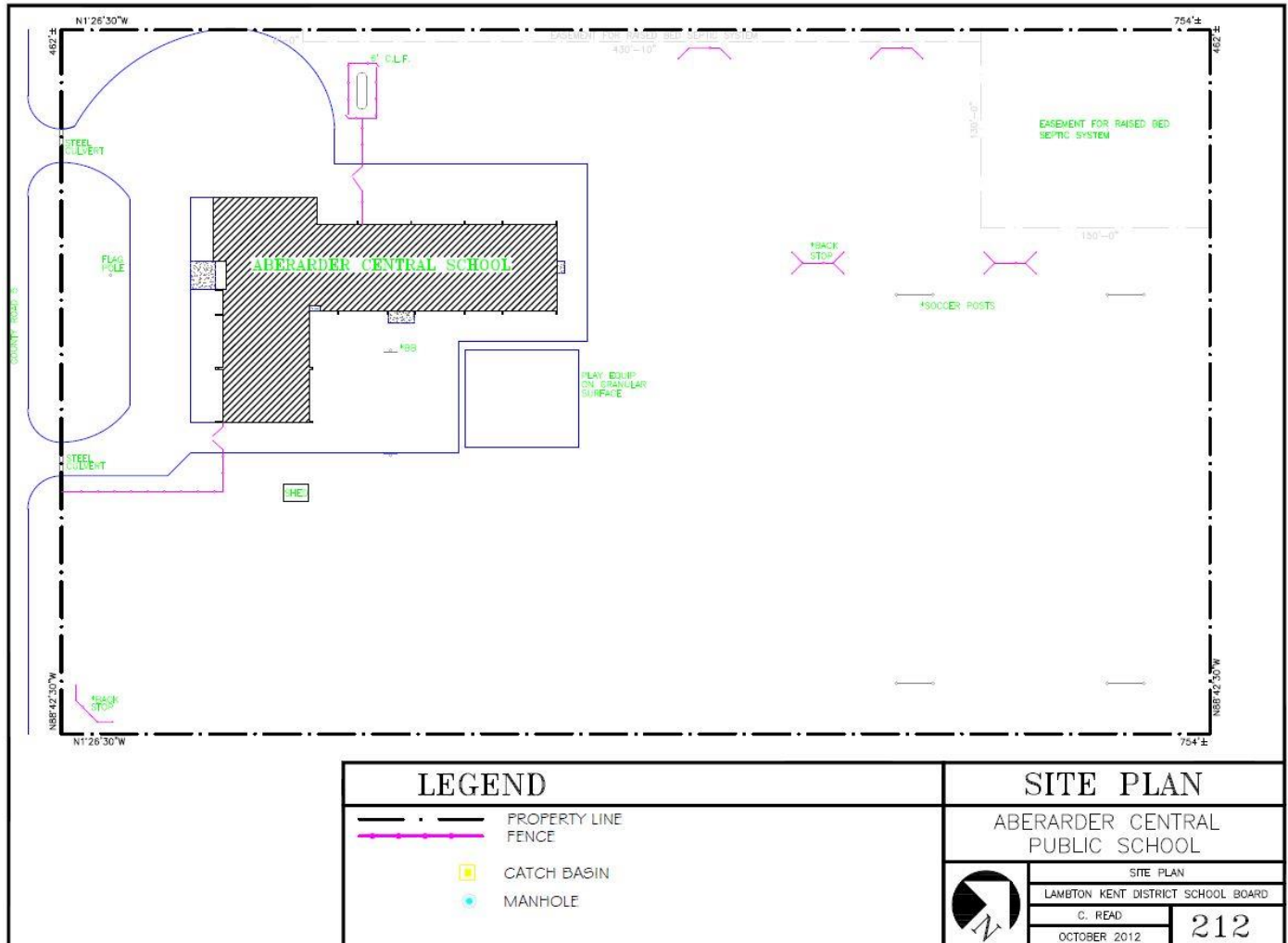
## SCHOOL INFORMATION PROFILE

Name of School: Aberarder Central School

Date: October 20, 2016

Page 8

### Site Plan





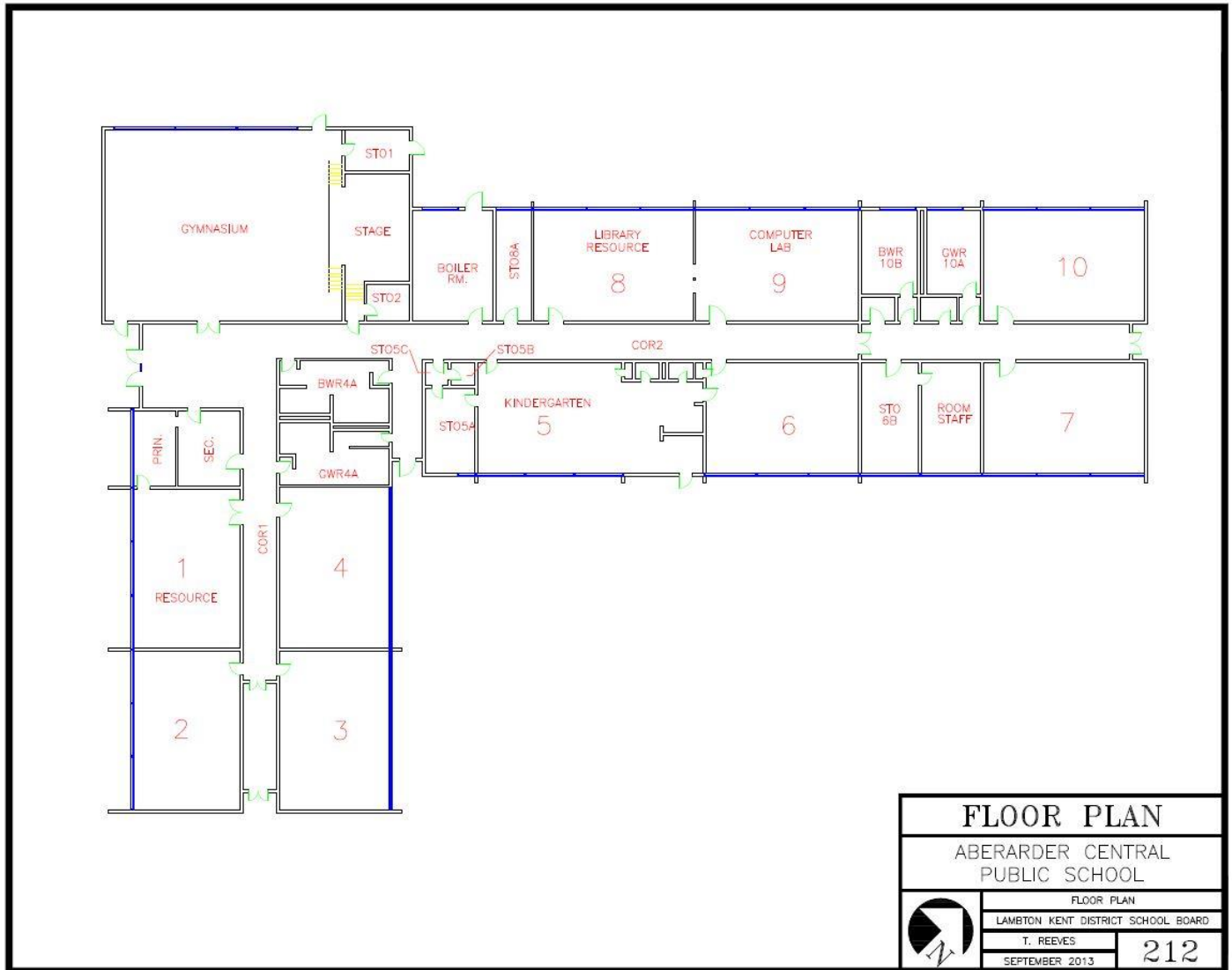
## SCHOOL INFORMATION PROFILE

Name of School: Aberarder Central School

Date: October 20, 2016

Page 9

### Floor Plan



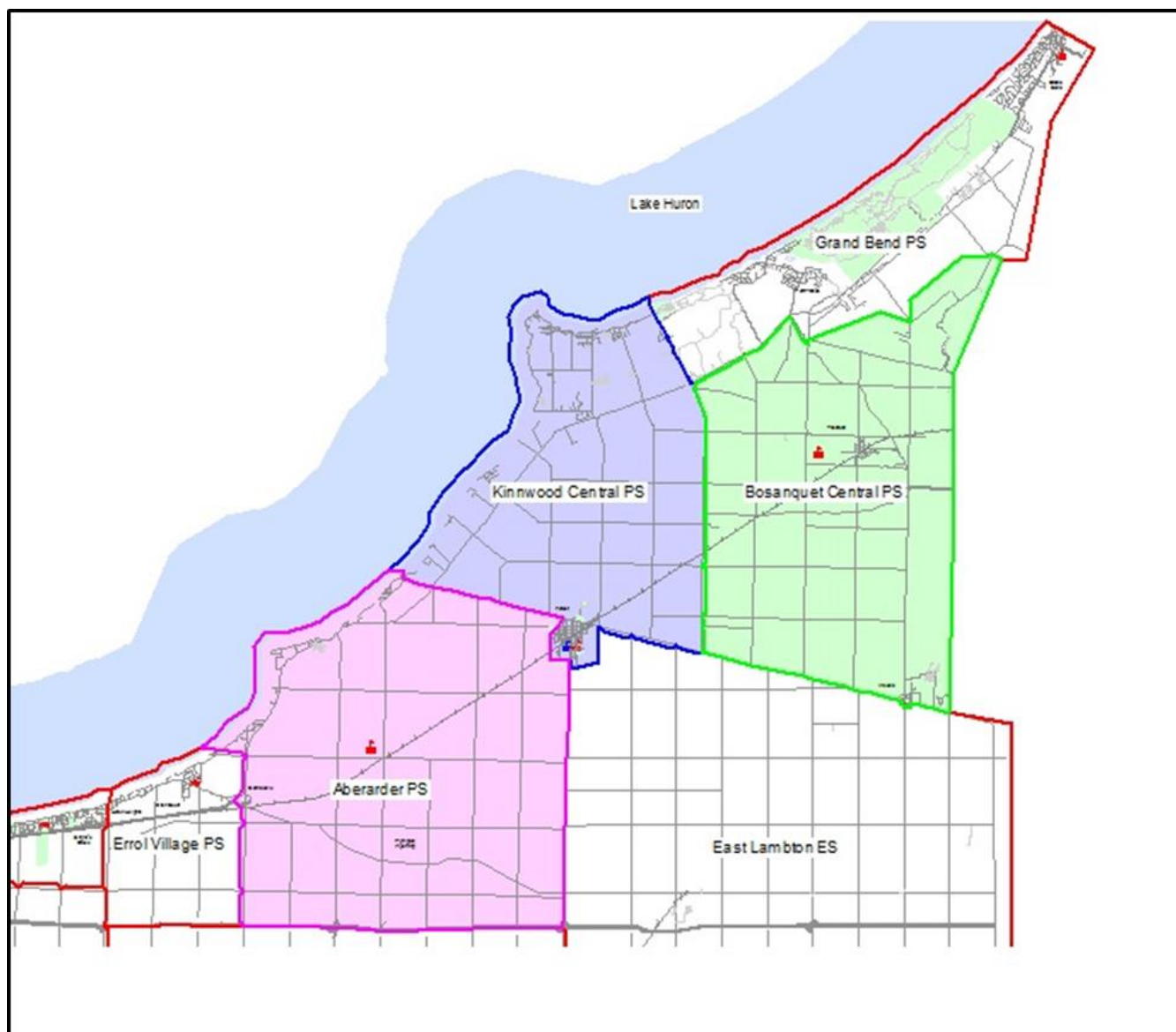
## SCHOOL INFORMATION PROFILE

Name of School: *Aberarder Central School*

Date: *October 20, 2016*

Page 10

### Boundary Map



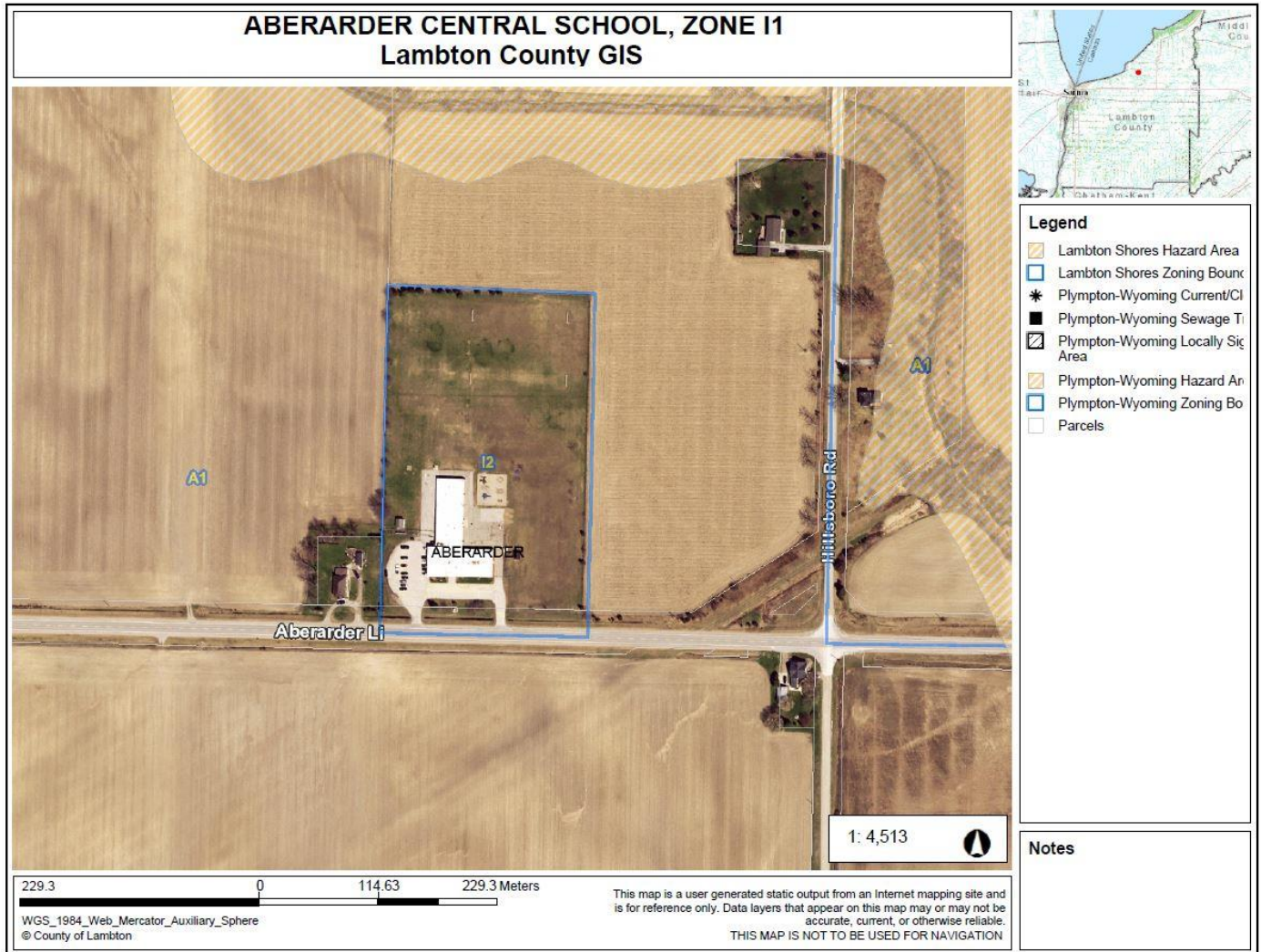
## SCHOOL INFORMATION PROFILE

Name of School: Aberarder Central School

Date: October 20, 2016

Page 11

### Aerial Map



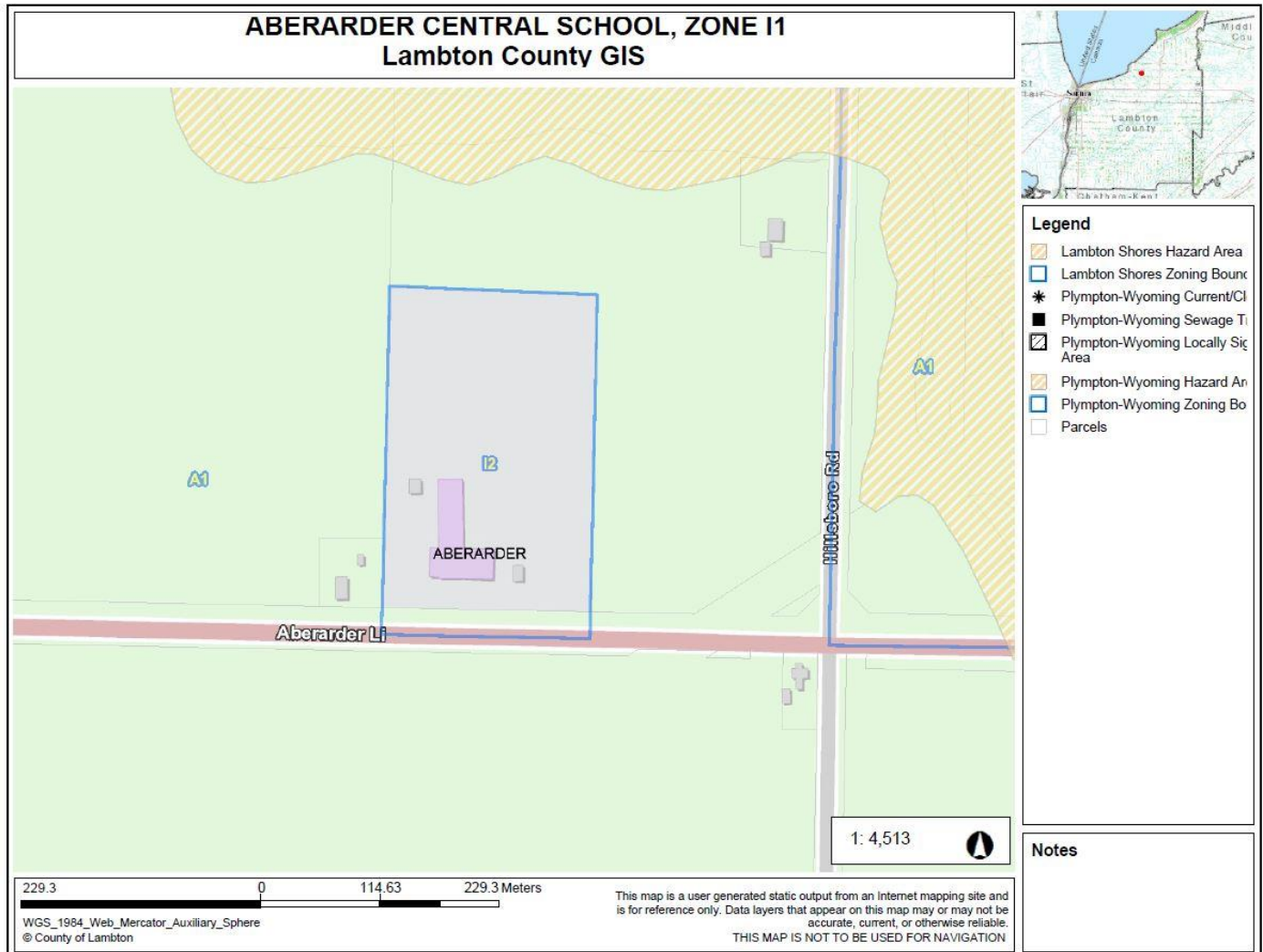
## SCHOOL INFORMATION PROFILE

Name of School: Aberarder Central School

Date: October 20, 2016

Page 12

### Zoning Map



## **SCHOOL INFORMATION PROFILE**

Name of School: Aberarder Central School

Date: October 20, 2016

Page 13

### Utility Costs

| Month             | Aberarder           |                     |             |                     |
|-------------------|---------------------|---------------------|-------------|---------------------|
|                   | Hydro               | Heat (Propane)      | Water       | Water Testing       |
| September 2015    | \$ 1,283.36         |                     |             | 4400.66             |
| October 2015      | 1,509.31            | 552.19              |             | 4400.66             |
| November 2015     | 1,374.52            | 1,152.07            |             | 4400.66             |
| December 2015     | 1,569.48            | 1,423.64            |             | 4400.66             |
| January 2016      | 1,639.34            | 1,197.13            |             | 4798.86             |
| February 2016     | 1,763.54            |                     |             | 4400.66             |
| March 2016        | 1,514.35            | 7,128.12            |             | 4400.66             |
| April 2016        | 1,862.48            | 1,366.63            |             | 12564.59            |
| May 2016          | 1,715.54            | 1,937.98            |             | 5457.66             |
| June 2016         | 1,357.72            |                     |             | 5457.66             |
| July 2016         | 1,787.39            |                     |             | 5457.66             |
| August 2016       | 1,023.79            |                     |             | 9819.03             |
| <b>Totals:</b>    | <b>\$ 18,400.82</b> | <b>\$ 14,757.76</b> | <b>\$ -</b> | <b>\$ 69,959.42</b> |
|                   |                     |                     |             |                     |
| Per Square Metre: |                     |                     |             |                     |
| 1696              | \$ 10.85            | \$ 8.70             | \$ -        | \$ 6,448.15         |
|                   |                     |                     |             |                     |
| Per Student:      |                     |                     |             |                     |
| 114               | \$ 161.41           | \$ 129.45           | \$ -        | \$ 433.42           |

## **SCHOOL INFORMATION PROFILE**

Name of School: *Aberarder Central School*

Date: *October 20, 2016*

Page 14

### Enrolment History and Projections

#### **Aberarder Central School**

##### **5 Year Enrolment History**

| Grade | 2011 | 2012 | 2013 | 2014 | 2015 |
|-------|------|------|------|------|------|
| JK    | 17   | 7    | 8    | 14   | 7    |
| K     | 11   | 17   | 6    | 6    | 15   |
| 1     | 9    | 13   | 17   | 7    | 6    |
| 2     | 19   | 7    | 10   | 15   | 8    |
| 3     | 16   | 18   | 7    | 10   | 14   |
| 4     | 18   | 16   | 17   | 9    | 12   |
| 5     | 17   | 18   | 14   | 19   | 10   |
| 6     | 18   | 16   | 20   | 14   | 20   |
| 7     | 20   | 18   | 15   | 19   | 13   |
| 8     | 14   | 19   | 22   | 15   | 18   |
| Total | 159  | 149  | 136  | 128  | 123  |

##### **Current Enrolment – September 14, 2016**

| Year | JK | K | 1  | 2 | 3 | 4  | 5  | 6  | 7  | 8  | Total |
|------|----|---|----|---|---|----|----|----|----|----|-------|
| 2016 | 11 | 9 | 14 | 4 | 8 | 15 | 12 | 10 | 18 | 13 | 114   |


##### **10 Year Enrolment Projections**

| Grade | 2017 | 2018 | 2019 | 2020 | 2021 | 2022 | 2023 | 2024 | 2025 | 2026 |
|-------|------|------|------|------|------|------|------|------|------|------|
| JK    | 8    | 6    | 7    | 7    | 7    | 7    | 7    | 7    | 7    | 7    |
| K     | 16   | 8    | 7    | 7    | 7    | 7    | 7    | 7    | 7    | 7    |
| 1     | 9    | 18   | 9    | 8    | 8    | 8    | 8    | 8    | 8    | 8    |
| 2     | 15   | 8    | 17   | 9    | 7    | 8    | 8    | 8    | 8    | 8    |
| 3     | 5    | 16   | 8    | 18   | 9    | 7    | 8    | 8    | 8    | 8    |
| 4     | 8    | 5    | 16   | 8    | 18   | 9    | 7    | 8    | 8    | 8    |
| 5     | 15   | 9    | 6    | 17   | 9    | 19   | 9    | 8    | 8    | 8    |
| 6     | 13   | 15   | 9    | 6    | 17   | 9    | 19   | 10   | 8    | 8    |
| 7     | 9    | 11   | 14   | 8    | 5    | 15   | 7    | 17   | 9    | 7    |
| 8     | 20   | 10   | 12   | 15   | 8    | 5    | 16   | 7    | 18   | 9    |
| Total | 118  | 106  | 105  | 103  | 95   | 94   | 96   | 88   | 89   | 78   |

## SCHOOL INFORMATION PROFILE

Name of School: Aberarder Central School  
 Date: October 20, 2016  
 Page 15

### Community Use of Schools



**CLASS**

SHARED SCHOOL SERVICES

STUDENT TRANSPORTATION  
 CHILD CARE  
 ENERGY & ENVIRONMENTAL  
 COMMUNITY USE OF SCHOOLS

**LKDSB COMMUNITY USE OF SCHOOLS REPORT**  
for Aberarder Central School

The tables below contain 2015-16 data from the CLASS school rental booking software.

| PROJECTED SEPTEMBER 2015-JUNE 2016<br>SCHOOL RENTAL PERMITTED HOURS |          |
|---|----------|
| Classroom   | 0        |
| Gymnasium – Single  | 0        |
| Library   | 0        |
| <b>TOTAL PERMITTED HOURS</b>  | <b>0</b> |

| PROJECTED SEPTEMBER 2015-JUNE 2016<br>SCHOOL RENTAL REVENUE |            |
|---|------------|
| Paid by rental groups                                       | \$0        |
| Covered by the CUS grant                                    | \$0        |
| <b>TOTAL REVENUE</b>  | <b>\$0</b> |

**COMMUNITY USE OVERVIEW**  
None to report

600 GILLARD STREET, WALLACEBURG ON N8A 4L3