

**SPECIAL BOARD, PUBLIC SESSION
REPORT TO BOARD**

FROM: Jim Costello, Director of Education

DATE: March 21, 2017

SUBJECT: Addendum to the Final Staff Report on the Consolidation of Aberarder Central School, Bosanquet Central School, Kinnwood Central School and North Lambton Secondary School into a Kindergarten to Grade 12 School

The purpose of the Addendum to the Final Staff Report (FSR) is to provide additional information acquired between the presentation of the FSR and the vote by Trustees.

The LKDSB Pupil Accommodation Report 2016/2017 and Initial Staff Report on the Consolidation of Aberarder Central School, Bosanquet Central School, Kinnwood Central School and North Lambton Secondary School into a Kindergarten to Grade 12 School were presented to Trustees at the October 4, 2016 Special Board Meeting.

On February 7, 2017, Trustees received the Final Staff Report on the Consolidation of Aberarder Central School, Bosanquet Central School, Kinnwood Central School and North Lambton Secondary School into a Kindergarten to Grade 12 School. This Addendum to the Final Staff Report on the Consolidation of Aberarder Central School, Bosanquet Central School, Kinnwood Central School and North Lambton Secondary School into a Kindergarten to Grade 12 School provides Trustees with a summary of the public delegations to the Board and presents final recommendations to Trustees. The Final Staff Report, as presented on February 7, 2017, is attached.

Delegations to the Board

Date	Forest Area of Schools Accommodation Review Public Delegations	Synopsis
February 7, 2017	Special Board Meeting	Andrea Walden addressed the Board regarding three main points: <ul style="list-style-type: none"> o North Lambton needs a viable secondary school; o The new Kindergarten to Grade 12 school should be located near The Shores Recreation Centre in Forest; and the Lambton Kent District School Board (LKDSB) and the Municipality of Lambton Shores should work together to utilize the existing sports facilities in the community; and o The focus of the proposed Kindergarten to Grade 12 school should be STEM (science, technology, engineering and math).
February 28, 2017	Regular Board Meeting	Brianna Coughlin, Clerk, and Ben Dekker, Councillor, from the Town of Plympton-Wyoming, addressed the Board regarding the boundary between the proposed new school and Errol Village Public School. Town officials are concerned that the consolidated boundary for the Kindergarten to Grade 12 school could jeopardize the future of Errol Village Public School and proposed a change to the boundary which would follow Oil Heritage Road.
February 28, 2017	Regular Board Meeting	Tanya and Chris Weyers addressed the Board requesting a revision to the catchment boundaries to include the area of Bonnie Doone in the Errol Village Public School district and Northern Collegiate Institute and Vocational School (NCIVS).
February 28, 2017	Regular Board Meeting	Doug Cook, Deputy Mayor, and Dan Sageman, Councillor, Municipality of Lambton Shores, addressed the Board and stated that the Municipality of Lambton Shores would support discussions with the LKDSB regarding potential shared usage of the municipal-owned The Shores Recreation Centre in the Town of Forest.

Date	Forest Area of Schools Accommodation Review Public Delegations	Synopsis
February 28, 2017	Regular Board Meeting	Andrea Walden addressed the Board in support of building a new Kindergarten to Grade 12 School on land ideally located near The Shores Recreation Centre in the Town of Forest. She presented a chart that indicated that the economically rational choice is to construct a new Kindergarten to Grade 12 school near The Shores Recreation Centre.
February 28, 2017	Regular Board Meeting	Two students from the Thedford Community Youth Group addressed the Board regarding Bosanquet Central School. They stated they were sad the Board wanted to close their school. Should the Board vote to close Bosanquet Central School, on behalf of the group, they asked the Board to build a new school in a new location, preferably near The Shores Recreation Centre in Forest.
February 28, 2017	Regular Board Meeting	Christine O'Reilly addressed the Board about the proposed closure of Bosanquet Central School, and other area schools, and the formation of a Kindergarten to Grade 12 school in Lambton Shores/north Lambton County. She spoke in support of a new school in the vicinity of The Shores Recreation Centre.

Administration's Final Rationale for the Recommendations

Throughout the Pupil Accommodation Review process, the majority of Accommodation Review Committee (ARC) members acknowledged the advantage of the creation of a Kindergarten to Grade 12 school.

A significant amount of communication has been received by LKDSB staff and Trustees regarding this possible consolidation. There appears to be strong support for a new build of a consolidated school on a new site in the Town of Forest.

There have been four petitions submitted to alter the boundary of the southwest portion of the catchment area of Aberarder Central School and one petition submitted in support of maintaining the boundaries outlined in the FSR.

Throughout this process, Senior Administration has followed both the Ministry of Education Pupil Accommodation Review Guideline and LKDSB Regulation No: R-AD-106. Administration has been objective in its analysis of the additional information received throughout the accommodation review process and upholds the FSR recommendations for the following reasons:

1. Program Opportunities for Students

The LKDSB strives to provide educational programs and services of the highest quality. This is best accomplished when facilities are conducive to creating a stimulating learning environment designed to meet the needs of all pupils within fiscal parameters. In addition to achieving an economic efficiency the consolidated school will offer sufficient range of programs in a modern facility to meet the needs of a diverse student population in the Forest area.

The Kindergarten to Grade 12 school would reduce the transition from an elementary to a secondary school, creating greater opportunity for staff to support literacy and numeracy needs of students. In addition, all grades would have access to specialized areas of the school, a modern athletic facility, science labs and a more concentrated support staff. Positive program enhancements could also occur in the intermediate years of Grade 7 to Grade 9. There is the potential for the broadening of program delivery in these grades. This increased opportunity coincides with the Ministry's Experiential Learning initiative which calls for schools to provide opportunities for intermediate students to experience activity-based learning.

North Lambton Secondary School (NLSS) is a rural school which provides a full range of courses for all of its students consistent with other secondary schools in the LKDSB. It also offers Specialist High Skills Major (SHSM) programs with area of focus in agriculture, construction and health and wellness. It is the LKDSB's plan that these programs will continue in a Kindergarten to Grade 12 school. Increased awareness of the SHSM program across a larger student population will encourage the continuation of the program.

2. Community

The LKDSB recognizes the importance of continuing to engage its community partners in planning an inclusive school environment that would benefit student learning and embrace the traditions of Kettle and Stony Point First Nation, the Municipality of Lambton Shores, the Town of Plympton-Wyoming, and Warwick Township. It is also important to maintain the Rosemary Wolfe Centre at the new site.

The consolidated Kindergarten to Grade 12 school will encourage a unified sense of community amongst the student population, which includes the students who will attend from other feeder elementary schools who will join at the secondary level (East Lambton Elementary School, Grand Bend Public School and Hillside School).

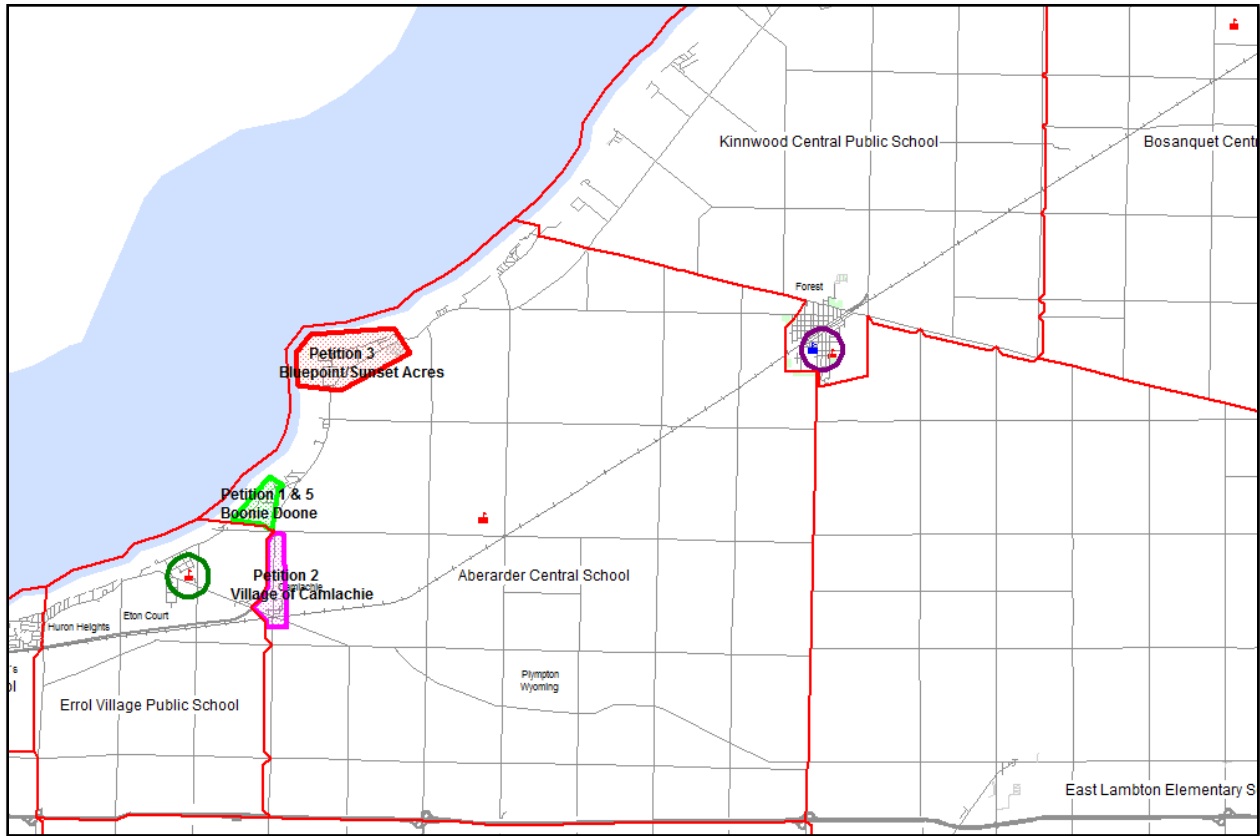
The Municipality of Lambton Shores has offered to work with the LKDSB to create a community hub, whereby services that are available at The Shores Recreation Centre could be shared with a consolidated school constructed on a nearby site. As well, the existing Kinnwood Central School Best Start Hub could be relocated to a new Kindergarten to Grade 12 site.

3. Boundaries

The LKDSB received five petitions regarding boundaries for the consolidated Kindergarten to Grade 12 school:

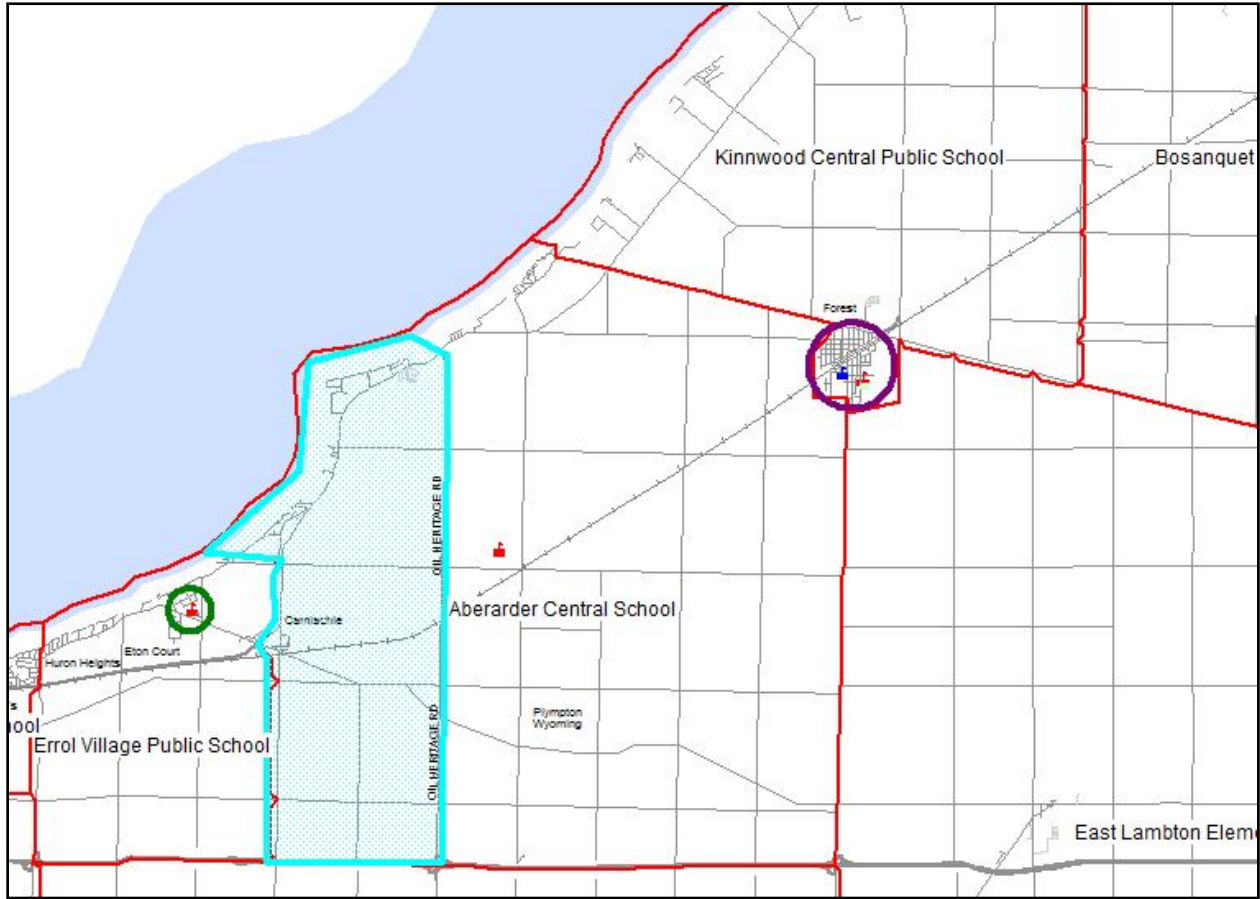
- Petition 1: Request to re-examine and revise catchment boundaries in order for the area of Bonnie Doone to be included in the Errol Village Public School Catchment Area *13 signatures*
- Petition 2: Petition for Camlachie Students to Attend Errol Village Public School *6 signatures*
- Petition 3: Petition to revise boundaries for Aberarder Children of the Bluepoint/Sunset Acres subdivision to be re-routed to Errol Village Public School *7 signatures*
- Petition 4: To: The Lambton Kent District School Board, Trustees and ARC Committee, Forest
WHEREAS The following individuals have signed this petition in support of maintaining the current Lambton Kent District School Board Boundaries as they relate to the North Lambton Secondary School and its feeder schools, (Bosanquet Central School, Hillside Elementary School, Grand Bend Public School, East Lambton Public School, and Aberarder)
AND WHEREAS the following individuals have signed this petition as they believe that a vibrant, viable public secondary school is necessary in North Lambton. *80 signatures*
- Petition 5: This statement and attached signed petition is in the continued support to request the revision of the LKDSB boundary to include the Bonnie Doone area within the Errol Village Public School catchment zone and subsequently NCIVS. We do not believe this change in boundaries will have a negative impact on the viability of the secondary school located in North Lambton as our full intention is for our children to attend secondary school within the city of Sarnia rather than Forest. *17 signatures*

Potential Impact to Enrolment at Consolidated Site Based on the Areas Outlined in Petitions 1, 2 3 and 5



Petition #	Petition Area	Current Total Number of LKDSB Elementary Students Who Reside in Petitioned Areas	Current Total Number of LKDSB Secondary Students Who Reside in Petitioned Areas
Petitions 1 & 5 (green shading)	Bonnie Doone	56 Students - Aberarder Central School - 45 Other LKDSB Schools - 11	22 Students - NLSS – 16 Other LKDSB Schools – 6
Petition 2 (pink shading)	Village of Camlachie		
Petition 3 (red shading)	Bluepoint/Sunset Acres		

Potential Impact to Enrolment at Consolidated Site Based on Town of Plympton-Wyoming Delegation Boundary Suggestion



Delegation	Suggested Boundary Area Revision	Current Total Number of LKDSB Elementary Students Who Reside in Suggested Area	Current Total Number of LKDSB Secondary Students Who Reside in Suggested Area
Town of Plympton-Wyoming Boundary Suggestion (blue shaded area)	Current Aberarder Public School Area North of Highway 402 and West of Oil Heritage Road to Highland Glen to be redirected to Errol Village Public School	79 Students – Aberarder Central School – 68 Other LKDSB Schools - 11	42 Students – NLSS – 30 Other LKDSB Schools - 12

Administration has analyzed the requests to change the boundaries. Any change in boundaries in this area will potentially hinder the long-term enrolment viability of the Kindergarten to Grade 12 school in the Town of Forest and will affect programming for the secondary panel of the school. Therefore, Senior Administration supports maintaining the current boundaries identified for the consolidated Kindergarten to Grade 12 school in the Town of Forest.

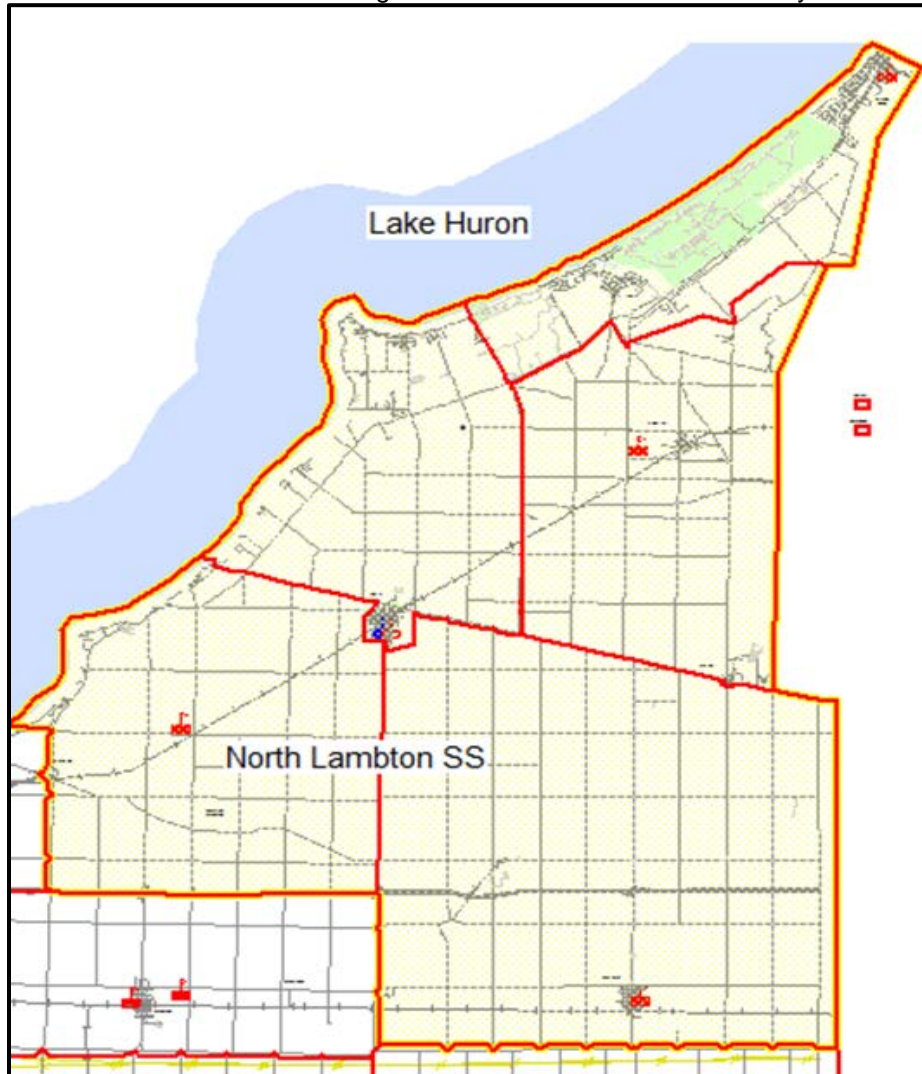
5-year History of NLSS Catchment Area Feeders – Choice of Secondary School

Year	Total Grads-NLSS Feeders	Attend NLSS	Attend Other LKDSB School	Other Boards
2011-12	103	63	26	14
2012-13	109	81	17	11
2013-14	101	61	19	21
2014-15	106	69	15	22
2015-16	95	75	8	12
Totals	514	349	85	80
	Average	67.90%	16.54%	15.56%

Aberarder Central School had a total of 89 graduates from 2011 to 2016. Of the 89 graduates, 66 students (74.16%) have chosen to attend North Lambton Secondary School, as outlined in the chart below.

	NLSS	Other LKDSB School	Other Boards
Average	74.16%	12.36%	13.48%

Consolidated Kindergarten to Grade 12 School Boundary



The catchment areas for Aberarder Central School, Bosanquet Central School, Kinnwood Central School, would also be consolidated into one catchment area for the Kindergarten to Grade 8 portion of the consolidated school. The catchment area for North Lambton Secondary School for the Grade 9 to 12 portion of the Kindergarten to Grade 12 school would remain unchanged as Grand Bend Public School, East Lambton Elementary School and Hillside School also feed the existing NLSS.

In summary, boundaries are primarily established for balanced student distribution. Proximity to nearby schools is a secondary factor. Any change to the boundary will result in fewer students attending the secondary portion of the consolidated Kindergarten to Grade 12 school in Forest as Errol Village Public School is a feeder school to NCIVS. Chatham-Kent Lambton Administrative School Services (CLASS) data confirms that there are a number of examples across the district where students residing near a boundary edge may be closer to an out-of-catchment area school. There are also many students who seek to attend schools that are further away from their residence.

4. Transition Plan

If Board approves the consolidation of the Schools, a Transition Committee will be formed as soon as possible to address the transition of students and staff. Transition Committee membership will consist of:

- Superintendent(s) of Education or designate(s)
- School Principal from each school
- School Council Chairs from each school
- First Nation Representative
- Two teachers from each school
- Two students from each school
- A clerical staff from each school
- A parent/community member from each school
- An educational assistant and early childhood educator from each school
- CUPE and ETFO President/Vice President

Subcommittees are developed as needed and may have members who are not on the Transition Committee. The Transition Committee would be responsible for such things as school orientation/transition, memorabilia, resources and equipment, special events (including graduation and awards), extra-curricular activities, mascot and logo.

5. Naming Committee For the Consolidated School

The practice of the Board has been to establish a Naming Committee when schools are consolidated. In accordance with Board Regulations R-AD-105, when schools are consolidated into one school, the process of naming and/or renaming of Board facilities will be followed. This requires the Director of Education to establish an ad hoc committee to recommend a name to the Board.

The Committee is to be comprised of:

- (a) two trustees, appointed by the Board (one to chair the committee),
- (b) one facility administrator (principal or principal designate if applicable) appointed by the Director,
- (c) two representatives of the School Advisory Councils (if applicable) appointed by the Director,
- (d) two community representatives appointed by the Director,
- (e) two LKDSB staff members,
- (f) one member of the senior administration appointed by the Director.

The Director will communicate to Principals and School Council Chairs information regarding the selection process for Naming Committee Members and the timelines.

Conclusion

The accommodation review process included the following steps:

- Public meetings
- Accommodation Review Committee (ARC) meetings
- Public delegations to Trustees at Board Meetings
- Meetings with local municipal officials
- Meetings with school staff and union representatives

After reviewing the information gathered during the accommodation review process, Senior Administration upholds the recommendations contained in the Final Staff Report (FSR) and submits the following recommendations without modification:

Recommendation #1

“That the Board approve the consolidation of Aberarder Central School, Bosanquet Central School, Kinnwood Central School and North Lambton Secondary School into a Kindergarten to Grade 12 School on a site to be determined as of September 1, 2020 and the submission of grant applications to the Ministry of Education for funding for the construction of the new school and the acquisition of land; and that the Board close Aberarder Central School, Bosanquet Central School, Kinnwood Central School and North Lambton Secondary School as of July 1, 2020.”

Recommendation #2

“That the Board approve the consolidation of Aberarder Central School, Bosanquet Central School, Kinnwood Central School and North Lambton Secondary School into a Kindergarten to Grade 12 School on the Kinnwood Central School Site as of September 1, 2020 and the submission of grant applications to the Ministry of Education for funding for the construction of the addition and the acquisition of land adjacent to the Kinnwood Central School Site; and that the Board close Aberarder Central School, Bosanquet Central School and North Lambton Secondary School as of July 1, 2020.”

Recommendation #3

“That the Board approve the closure of Aberarder Central School and the consolidation of the students with the Kinnwood Central School students at the Kinnwood Central School Site as of July 1, 2018 if funding is not provided by the Ministry for the construction of a Kindergarten to Grade 12 school at a site to be determined or for an addition at the Kinnwood Central School Site.”

Recommendation #4

“That the Board dissolve the Forest Area Schools Accommodation Review Committee.”

Recommendation #5

“That the Board approve the establishment of an Ad Hoc Naming Committee to recommend to the Board a name for the consolidated Kindergarten to Grade 12 Aberarder Central School, Bosanquet Central School, Kinnwood Central School and North Lambton Secondary School and appoint two Trustees to serve on the Committee.”