

SPECIAL BOARD, PUBLIC SESSION
REPORT TO BOARD

FROM: Jim Costello, Director of Education
Gary Girardi, Superintendent of Capital Planning and Accommodation
Brian McKay, Superintendent of Business

DATE: February 7, 2017

SUBJECT: Final Staff Report on the Consolidation of Aberarder Central School, Bosanquet Central School, Kinnwood Central School and North Lambton Secondary School into a Kindergarten to Grade 12 School

The purpose of the Final Staff Report on the Consolidation of Aberarder Central School, Bosanquet Central School, Kinnwood Central School and North Lambton Secondary School into a Kindergarten to Grade 12 School is to provide Trustees with a summary of the Forest Area of Schools Accommodation Review, information on the community consultation process and the final staff recommendations. The Pupil Accommodation Review process is still underway, with opportunities for public delegations at the February 28, 2017 Board Meeting. Any changes to the Final Staff Report, as a result of public delegations, will be included as an addendum to the Final Staff Report on the Aberarder Central School, Bosanquet Central School, Kinnwood Central School and North Lambton Secondary School into a Kindergarten to Grade 12 School, which will be presented to Trustees for approval at the March 21, 2017 Special Board Meeting.

A. Background

The Lambton Kent District School Board (LKDSB) strives to provide educational programs and services of the highest quality. This is best accomplished when facilities are conducive to creating a stimulating learning environment designed to meet the needs of all pupils within fiscal parameters. In addition to facilitating the delivery of its Mission, the LKDSB will endeavor to optimize the use of facilities. Various factors beyond the control of the LKDSB impact this commitment. These factors include declining enrolment, demographics, current funding and operational realities, new provincial legislation and policy, changing educational objectives and physical limitations of buildings.

In March 2015, the Ministry of Education released a new Pupil Accommodation Review Guideline and a new Community Planning and Partnerships Guideline. As a result, in June 2015, the Board updated its policies and regulations on Pupil Accommodation and Community Planning and Partnerships to reflect the new Ministry guidelines. In accordance with these guidelines, the LKDSB Capital Plan 2016 was presented at the Board Meeting on September 27, 2016 to which all agencies on the LKDSB entities list, as outlined in the LKDSB Regulation No: R-BU-529, were invited. During this presentation, LKDSB Senior Administration shared information on funding changes and potential partnership opportunities to utilize unused pupil spaces in schools with low enrolment from both the municipal sector and the business sector.

The LKDSB Pupil Accommodation Report 2016/2017 and Initial Staff Report for the Consolidation of Aberarder Central School, Bosanquet Central School, Kinnwood Central School and North Lambton Secondary School into a Kindergarten to Grade 12 School on the Kinnwood Central School Site were presented to the Board on October 4, 2016, in compliance with LKDSB Regulation No: R-AD-106. The Pupil Accommodation Report contained the Proposed Pupil Accommodation Review Plan by Phases, one of which was further outlined in the Initial Staff Report recommending the Consolidation of Aberarder Central School, Bosanquet Central School, Kinnwood Central School and North Lambton Secondary School into a Kindergarten to Grade 12 School on the Kinnwood Central School Site. Trustees voted to approve the establishment of an Accommodation Review Committee for the Consolidation of Aberarder Central School, Bosanquet Central School, Kinnwood Central School and North Lambton Secondary School into a Kindergarten to Grade 12 School on the Kinnwood Central School Site.

A.1 Demographics/Declining Enrolment

Board and School Facts

	Aberarder	Bosanquet	Kinnwood	NLSS
Property Size	3.48 Hectares (8.599 Acres)	4.93 Hectares (12.18 Acres)	5.54 Hectares (13.69 Acres)	6.29 Hectares (15.54 Acres)
Age and Size	Original Build 1963 (1,696 sq. m)	Original Build 1963 (2,769 sq. m)	Original Build 1962 (3,896 sq. m)	Original Build 1940 (9,359 sq. m)
Enrolment (as of Sept. 14/16)/ Capacity	114/199	184/328	278/331	547/822

- In October 1999 the LKDSB had 29,399.6 Full Time Equivalent (FTE) students
- As of October 31, 2016, the LKDSB has 22,017.9 FTE students
- Since the time of amalgamation, this is a 25% reduction in student population at the LKDSB
- The Ontario Ministry of Education indicates the LKDSB has 8,487 Ministry-rated empty pupil spaces as of October 31, 2016
- LKDSB's current capacity utilization is 72.2%
- LKDSB's projection of continued enrolment decline and capacity utilization: 20,934 FTE in 2021 (68.6%); 20,027 FTE in 2026 (65.6%)
- LKDSB's rate of enrolment decline is approximately 1% from 2014/2015 to 2016/2017
- Since amalgamation in 1998 the LKDSB has closed 14 elementary schools, 3 secondary schools, and 1 Adult Learning Centre, and has built 2 new schools – Sir John Moore (1999) and P.E. McGibbon (2010).

While Statistics Canada predicts that the birth rate in Ontario will increase from 2010 to 2025, Lambton County and the Municipality of Chatham-Kent birth rates and the projected student populations are expected to decrease. This anticipated decline will occur more slowly than the current pace. This Statistics Canada data is supported by the Board's demographic software and is reflected in the demographic information supplied to the LKDSB by the Municipality of Chatham-Kent and the County of Lambton.

The County of Lambton provided demographic data produced by its Planning and Development Services Department. The population projections for the Municipality of Lambton Shores are outlined in the chart below.

Year	Low Population Projection – Lambton Shores	Reference Population Projection – Lambton Shores	High Population Projection – Lambton Shores
2016	9919	10502	11085
2021	9157	10260	11434
2026	8313	9862	11611
2031	7392	9307	11595

The demographic data for the Town of Plympton-Wyoming as provided by the County of Lambton is outlined below.

Year	Low Population Projection – Town of Plympton-Wyoming	Reference Population Projection – Town of Plympton-Wyoming	High Population Projection – Town of Plympton-Wyoming
2016	7192	7448	7705
2021	6824	7308	7811
2026	6416	7115	7863
2031	5959	6846	7830

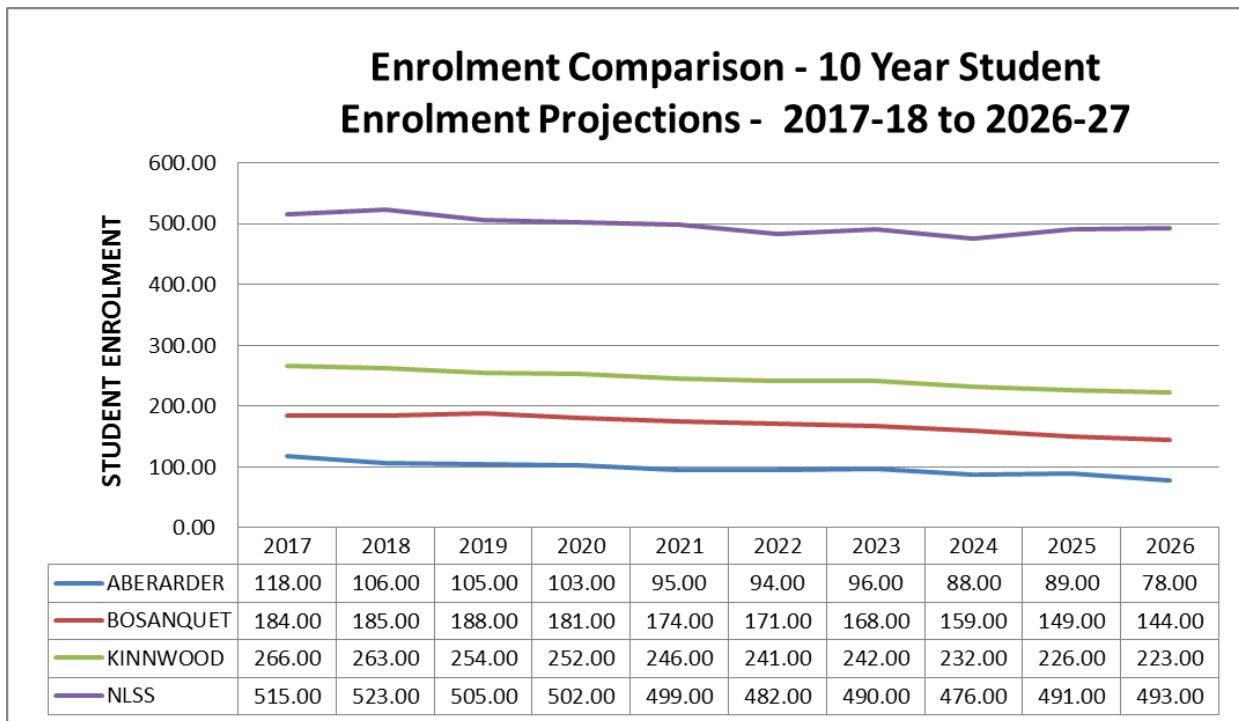
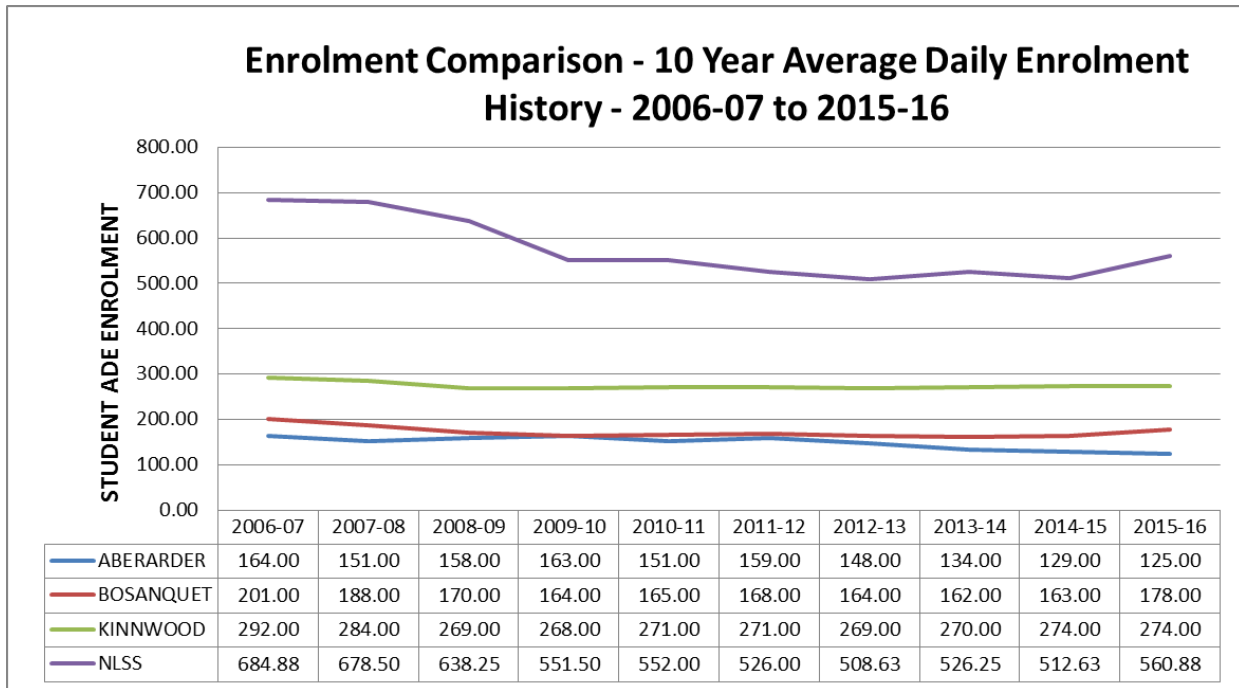
The slight decline in population found in the Reference Population Projection column supports the projections for this area in terms of student enrolment supplied by the LKDSB which also shows a slight decline in the four schools in the Forest Area. This data supports the demographic information found in the *2016 Draft County of Lambton Official Plan*, which shows a range in population projections from slight decline to a modest increase in populations for these areas between today and 2031.

From the 2016 Draft County of Lambton Official Plan

Municipality	Dwellings Allocated Annually	Projected 2031 Population
Lambton Shores	50	9,307 to 11,595
Plympton-Wyoming	42	6,846 to 7,830
Lambton County*	449	111,367 to 122,162

*The Lambton County population projection figures do not include First Nations populations, which added another 3,604 to Lambton County’s population in the 2006 census.

The *2016 Draft County of Lambton Official Plan* states that the projected population in 2031 will be 122,162 from a present population of 111,367. The document states that the majority of future urban growth will be directed to urban centres and urban settlements. The Official Plan also states that there is a potential for growth to occur in the City of Sarnia, however, “towards the end of the planning horizon, the aging of the Baby Boomer population is expected to contribute to some degree of population decline for most local municipalities and the County as a whole”.



The Lambton County data and the LKDSB data indicate a similar trajectory. The enrolment of the schools will remain relatively consistent over the next ten years. Consolidation of these schools will provide students with an improved and updated facility, an expanded co-curricular program, and more opportunities for staff collaboration from Kindergarten to Grade 12. The consolidated site would include amenities that would support further community partnerships.

A.2 Financial

Financial Considerations

Strong fiscal management is an important component of Ontario's publicly funded education system. Ontario's Ministry of Education states, in their *Achieving Excellence: A Renewed Vision for Education in Ontario*, that "public trust is built when the education system makes decisions based on evidence and research, and when it is seen as a good steward of public resources". This focus has led to changes in how the Ministry is providing grant funding for education in the province. It is no longer fiscally sustainable to continue to fund empty pupil spaces in our schools. This practice diverts significant funding from students.

The LKDSB Pupil Accommodation Report 2016/2017 outlined details of the following impacted grants:

- Top-up Funding reduction under the School Facility Operations and Renewal Grant
- Declining Enrolment Adjustment Grant reduction
- Geographic Circumstances Grant (rural designation) reduction
- School Foundation Grant reduction

The LKDSB began experiencing changes in these four funding lines, beginning with the 2015/2016 budget. Funding changes are generally being phased in over a three year period as per the following schedule:

- 2015/2016 budget included 1/3 of the funding generated from the new funding model and 2/3 of the funding from the old funding model
- 2016/2017 budget includes 2/3 of the funding generated from the new funding model and 1/3 of the funding from the old funding model
- 2017/2018 budget will be based entirely on the new funding model

The reduction in grant funding may be subject to further adjustments due to changes in the LKDSB's annual enrolment.

Top-up Allocation Under the School Facility Operations and Renewal Grant

Top-up funding as provided under the School Facility Operations and Renewal Grant has been provided to school boards since 2003 to assist in managing and funding underutilized schools. The old method of calculating top-up funding is being phased out over a three-year period, starting with the 2015/2016 budget year. The following table shows the annual impact of the funding phase-out over the three year period. The loss in top-up allocation for the 2015/2016 budget year was the net funding loss after all enrolment adjustments had been made for that school year. The 2017/2018 projected top-up funding loss is based on the LKDSB 2016/2017 enrolment numbers. Final annual funding amounts are not known until final enrolment numbers are provided to the Ministry of Education.

Budget Year	Budget Allocation Method	Calculation of Previous Year Funding	Budget Year Funding	Difference (Loss in Funding)
2015/2016	1/3 funding – new method 2/3 funding – old method	\$6,206,973	\$4,770,710	\$1,436,263
2016/2017	2/3 funding – new method 1/3 funding – old method	\$4,770,710	\$3,465,277	\$1,305,433
2017/2018	All funding – new method	\$3,465,277	\$2,159,844	\$1,305,433
Total				\$4,047,129

The Ministry continues to offer the enhanced top-up funding portion with eligibility criteria based on road network distance between facilities. Eligible schools within the LKDSB will continue to receive top-up to 100% of the school's capacity. The new eligibility criteria is as follows:

- Elementary schools must be at least 10 km away from the next closest school of the Board
- Secondary schools must be at least 20 km away from the next closest secondary school of the Board

Without changes to the number and location of schools, once the new model for top-up funding is completely phased in, the LKDSB will lose \$4,047,129 on an annual basis. The LKDSB, under the new top-up funding formula will receive funding for only 11 elementary schools rather than its current 47 elementary schools, and only 3 secondary schools rather than its current 12 secondary schools. The new top-up funding formula no longer supports under-capacity schools that are operating in close proximity to other LKDSB schools.

Declining Enrolment Adjustment Grant

The Declining Enrolment Adjustment Grant funds school boards that are experiencing a decline in student enrolment. This grant provides time for a school board to address declining enrolment through program and facility changes. This change will be phased in over a three-year period. The LKDSB 2016-17 budget has experienced a loss in this grant in the amount of \$48,627. The reduction in this grant may be subject to further adjustment due to changes in LKDSB annual enrolment.

Geographic Circumstances Grant

The Geographic Circumstances Grant provides funding to school boards that operate small, isolated schools and that are faced with additional operating costs due to geographical challenges, such as school board size and school dispersion. The LKDSB is experiencing reductions in the following two areas of this grant:

- Remote and Rural Allocation – Supports the higher cost of purchasing goods and services for small school boards, for school boards that are distant from major urban centres and for school boards with schools that are distant from one another. The LKDSB realized a reduction in 2016-17 of \$25,642.
- Rural and Small Community Allocation – Supports schools in rural or small communities. The LKDSB realized a reduction in 2016-17 of \$53,458.

Changes to this grant will be phased in over a three year period following the same 1/3-2/3 phase-in method as described above. The LKDSB will experience a total grant decrease of \$79,100 for 2016-17, which is in addition to the 2015/16 funding reduction in this area. After the three year phase-in of the new formula, the annual loss in funding will be \$230,000.

School Foundation Grant

The School Foundation Grant covers the costs of school administration, including salaries and benefits for principals, vice-principals and office support staff, as well as school administration supplies. A new allocation method is being phased in for this grant. The new funding formula will shift funding away from small schools that are not isolated. Funding preference will be given to schools that are large, remote and/or combined. A combined school would contain grades from both the elementary and secondary panels. The 2016-17 grant reduction for the LKDSB is \$30,718.

Student Transportation

The consolidation of these schools will create a new situation for the school communities in which Kindergarten to Grade 12 students would be located at a single school site. This information has been provided by the Chatham-Kent Lambton Administrative School Services Consortium (CLASS) based on the consolidation occurring on the Kinnwood Central School site. However, the community has made a significant number of statements in the public meetings supporting the desire for a Kindergarten to Grade 12 school on a new site with a new building. Should the consolidation take place at a different location in the vicinity of the Town of Forest, there may be slight changes to the number of students within walking distance, but the bus times and number of buses would likely remain the same as indicated below.

Presently North Lambton Secondary School and Kinnwood Central School operate with an early (Tier 1) bell time typical of secondary schools within the Board (8:00 a.m.-8:30 a.m. start time). Aberarder Central School and Bosanquet Central School operate with a later (Tier 2) bell time (9:00 a.m.-9:30 a.m. start time).

Two options have been researched:

- I. All four student populations at a Tier 1 bell time
- II. Grade 9 to 12 students at a Tier 1 bell time, and Kindergarten to Grade 8 students at a Tier 2 bell time

Anticipated Cost Implications:

The current route solution for this area includes 19 full-size buses that provide service for North Lambton Secondary School, Aberarder Central School, Bosanquet Central School, Kinnwood Central School, Grand Bend Public School and the coterminous Forest elementary school students.

- Tier 1 runs on these buses are simultaneously used to service North Lambton Secondary School, Kinnwood Central School and the coterminous Forest elementary school.
- Tier 2 runs on these buses are independently used to service Aberarder Central School, Bosanquet Central School, East Lambton Elementary School and Grand Bend Public School.

For each of the options examined, there will be additional cost implications due to service demand changes as a result of the consolidation.

Option I: Tier 1 Bell (8:05 a.m. / 2:20 p.m.) for All Grade Levels

The first step in accommodating all students at the 8:05 a.m. bell time will be to eliminate the Tier 2 runs currently servicing Aberarder Central School and Bosanquet Central School. This would generate an estimated annual mileage cost reduction of approximately \$89,000.

Secondly, the routing solution for the area would require additional buses to:

- a) Cover pockets where Bosanquet Central School or Aberarder Central School students reside that are not currently along an existing Tier 1 run;
- b) Cover areas where there will be too many students to accommodate with the existing routing;
- c) Maintain a routing solution that will remain within Board ride time policy limits.

CLASS estimates that up to 4 additional full-size buses will be required to transport eligible students with restructured routes in this Tier 1 bell option. Each of these vehicles is estimated at an approximate annual cost of \$44,000, for a potential increase of \$176,000.

CLASS anticipates there would be no significant increases to ride times overall for current Kinnwood Central School or North Lambton Secondary School students. Due to additional distances traveled to a school site further away, ride times may increase up to 15 minutes for some Aberarder Central School students and up to 20 minutes for some Bosanquet Central School students. CLASS will examine all area bus routes in order to maximize efficiencies and minimize ride time impacts for students.

Option I: Estimated Annual Cost Implications

Additional service to expand fleet capacity	\$176,000
Mileage reductions for current Tier 2 runs	<u>(89,000)</u>
Total estimated annual cost increases	\$ 87,000

Option II: Tier 1 Bell (8:05am / 2:20pm) for Secondary Grades

Tier 2 Bell (9:15am / 3:35pm) for Elementary Grades

In this option, bus routes for North Lambton Secondary School and the coterminous elementary school would remain largely unchanged with only minor ridership reductions possible where Kinnwood Central School students are removed. This small reduction is seen to be inconsequential in terms of overall cost and is dependent on student residential locations.

Bus runs servicing Aberarder Central School and Bosanquet Central School students will be completely restructured in order to provide an efficient routing solution to the Kinnwood Central School site. These runs will incur additional mileage in order to travel the additional distance into Forest. This additional mileage cost is estimated to be \$69,000 annually.

Additional Tier 2 bus runs for Kinnwood Central School students will need to be created. It is anticipated that these students could be accommodated on three new runs on the existing North Lambton Secondary School buses, with an additional mileage cost estimated at \$27,000 annually. CLASS anticipates that there would be no significant increases to ride times overall for current North Lambton Secondary School students. Due to additional distances traveled to a school site further away, ride times may increase up to 15 minutes for some Aberarder Central School students and up to 20 minutes for some Bosanquet Central School students. Current Kinnwood Central School students would potentially see an increase in ride times, as students will be concentrated down to a small number of runs rather than spread out over the North Lambton Secondary School buses. CLASS will examine all area bus routes in order to maximize efficiencies and minimize ride time impacts for students.

Option II: Estimated Annual Cost Implications

Additional mileage for Aberarder Central School, Bosanquet Central School bus runs	\$69,000
Additional Tier 2 bus runs for Kinnwood Central School students	<u>27,000</u>
Total estimated annual cost increases	\$96,000

B. Accommodation Review Process

The Accommodation Review process consists of five components:

- B.1** - Accommodation Review Committee (ARC)
- B.2** - Public Meetings
- B.3** - Community Consultations
- B.4** - Public Delegations to Board of Trustees
- B.5** - Meetings with LKDSB Staff

B.1 Accommodation Review Committee (ARC)

Mandate:

The Accommodation Review Committee (ARC) represents the schools under review and acts as the official conduit for information shared between the school board and the school communities. The ARC may comment on the Initial Staff Report and may, throughout the pupil accommodation review process, seek clarification on the Initial Staff Report. The ARC may provide other accommodation options than those included in the Initial Staff Report; however, it must include supporting rationale for any such option.

The following chart provides a summary of the ARC Meetings. All complete Records of Action and presentations can be found on the LKDSB website.

Date	Forest Area of Schools Accommodation Review Meetings	Synopsis
October 20, 2016	ARC Orientation Session (North Lambton Secondary School) 6:30 to 8:25 p.m.	Administration provided an Orientation Session and reviewed the mandate, roles and responsibilities, and procedures of the ARC.
November 23, 2016	Accommodation Review Committee Working Meeting #1 (Aberarder Central School) 6:00 to 9:29 p.m.	<p>Administration presented information on the role of the Committee. There was follow-up to items asked at the Orientation Meeting including: a discussion about the North Lambton Lodge adjacent to Kinnwood Central School; concerns about residential neighbours to the site; importance of the Kaeden Brown play structure at Bosanquet Central School; and organization of a visit to a Kindergarten to Grade 12 school in Walkerton, Ontario.</p> <p>A list of questions was submitted prior to the meeting and additional questions were asked at the meeting. These questions and their responses can be found in the Record of Action.</p> <p>Administration from the LKDSB arranged for a presentation from CLASS to address transportation concerns expressed in Public Meeting #1. This included traffic mitigation strategies applied in other areas in Lambton County and the Municipality of Chatham-Kent.</p> <p>Administration introduced the architects from ROA Studio Inc. that were hired by the LKDSB to provide a vision of what the Kinnwood Central School site</p>

Date	Forest Area of Schools Accommodation Review Meetings	Synopsis
		<p>could look like as a Kindergarten to Grade 12 school. The architects discussed their process and answered questions that they would use to assist their work moving forward.</p> <p>The Committee discussed the delegation from the Public Meeting in regard to a request for a change in the catchment area boundary for Aberarder Central School. Information was presented in regard to 3 petitions requesting areas along the western portion of the boundary of the Aberarder Central School catchment area be moved to be included as part of the Errol Village Public School catchment area.</p> <p>Time was allotted for a question and answer period from ARC members, as well as a discussion about items for Working Meeting #2.</p>
January 11, 2017	Trip to Walkerton District Community School	28 people, including members of the ARC, LKDSB Trustees, union leadership and school staff accompanied Senior Administration for a tour of this a Kindergarten to Grade 12 school in Walkerton, Ontario.
January 26, 2017	Accommodation Review Committee Working Meeting #2 (Kinnwood Central School) 6:00 p.m. to 8:50 p.m.	<p>The Committee discussed the trip to the Kindergarten to Grade 12 school in Walkerton, Ontario.</p> <p>This was followed by a discussion related to the following items:</p> <ul style="list-style-type: none"> - Further architectural drawings from ROA Studio Inc. with follow-up questions. - Questions following the presentation from CLASS at Public Meeting #2. - Memo from a committee member was shared with the ARC outlining reasons for the LKDSB to maintain existing boundaries for Aberarder Central School. - Introduction of a petition to maintain existing boundaries. - Discussion of community letters encouraging the Ministry of Education to build a new Kindergarten to Grade 12 school in Forest, Ontario. <p>ARC members shared their comments on their positions and final statements. Comments can be found in the attached Appendix A.</p>

Options Suggested and/or Items Discussed by the ARC

The Committee examined and discussed the following items:

- Maintaining the Status quo
There were some committee members that made statements suggesting a preference for no changes to the present schools and boundaries. However, many ARC members recognized the need for the LKDSB to achieve efficiencies due to declining enrolment.

- Consolidation to Kindergarten to Grade 12 School at the Kinnwood Central School Site
 - The importance of an inclusive environment for students entering at Grade 9.
 - The importance of maintaining a welcoming environment for students from Kettle and Stony Point First Nation and desire to retain the Rosemary Wolfe Centre.
 - Travel time from areas outside of Forest.
 - Management of traffic flow.
 - Accommodation of the building addition while maintaining green space and play area at this site.
 - Interaction of younger children in a facility that also houses secondary school students.
 - Building layout and grade division organization.
 - Organization of the administration of the new Kindergarten to Grade 12 school.
 - Facility updates including asbestos abatement, air-conditioning, pond management, and updating of the playground area.
 - Program offerings with reference to the importance for program tie-ins with local community needs such as trades, STEM (Science, Technology, Engineering, and Math), agriculture, and the arts.
 - Mentoring opportunities for senior students.
 - Elementary students to have access to program opportunities that exist at the secondary level for academic, athletic, and artistic endeavours.
 - An increase in community use of new facilities, which would enhance community programs.
 - A central location for supports for early years, school-aged children, family supports, and related crossover with programs offered at the neighbouring North Lambton Lodge.

- Consolidation to a Kindergarten to Grade 12 School to be Located at a Site to be Determined
 - The importance of an inclusive environment for students entering at Grade 9.
 - The importance of maintaining a welcoming environment for students from Kettle and Stony Point First Nation and desire to retain the Rosemary Wolfe Centre.
 - Travel time from areas outside of Forest.
 - Management of traffic flow.
 - Interaction of elementary students in a facility that also houses secondary school students.
 - Building layout and grade division organization.
 - Organization of the administration of the new Kindergarten to Grade 12 school.
 - Program offerings with reference to the importance for program tie-ins with local community needs such as trades, STEM (Science, Technology, Engineering, and Math), agriculture, and the arts.
 - Mentoring opportunities for senior students.
 - Access to program opportunities for elementary students that exist at the secondary level for academic, athletic, and artistic endeavours.
 - An increase in community use of new facilities that would enhance community programs.
 - Committee members suggested a location near the Shores Recreation Centre would be a preferable option.
 - Construction of a new school would allow for an overall design to support a Kindergarten to Grade 12 school.
 - Impact of the removal of the school from the surrounding residential area and North Lambton Lodge.

- The Requested Change of Boundary along the Western Portion of the Aberarder Central School Catchment Area
 - Submission of petitions to change boundaries and to keep boundaries intact
 - Implications of school enrolment due to boundary changes
 - Length of travel time for families to the Kinnwood Central School site
- Maintaining and Welcoming All Communities into the New Consolidated Site
 - Kaeden Brown Playground Equipment
 - Other local community activities and traditions that affect school culture and climate
 - Transitions from Grade 8 to secondary school for students that are not in the Kindergarten to Grade 8 portion of the consolidated school
 - Incorporation of memorabilia into new site
- Asbestos at Kinnwood Central School
 - During the public consultations there was discussion in regard to potential asbestos at the Kinnwood Central School site. All asbestos material is in good condition and monitored by a third-party consultant on an annual basis. Any construction would take this into consideration and protection of students and staff would be a priority. The LKDSB would work with architects to ensure a plan is in place.

B.2 Public Meetings

The following provides a summary of the Forest Area of Schools Accommodation Review Public Meetings.

Date	Forest Area of Schools Accommodation Review Public Meetings	Synopsis
November 16, 2016	Pupil Accommodation Review Public Meeting #1 (Bosanquet Central School) 6:00 to 8:37 p.m.	Administration provided an overview of the ARC Orientation Session; presented the Initial Staff Report with the recommendation; and presented the School Information Profiles (SIP). Two 5-minute delegations from community members, which are posted on the LKDSB website. Members of the public and ARC members asked questions and provided input on both the staff recommendation and process. An alternative proposal was suggested where a new Kindergarten to Grade 12 school was built on a new location.
January 23, 2017	Pupil Accommodation Review Public Meeting #2 (North Lambton Secondary School) 6:00 to 8:03 p.m.	Administration presented an overview of the discussion from the ARC Working Meeting #1. Presentations were delivered from CLASS and ROA Studio Inc. These presentations were requested from the ARC following Working Meeting #1 and can be found on the LKDSB website. One 5-minute delegation from the Corporation of the Town of Plympton-Wyoming, which is posted on the LKDSB website. Members of the public and ARC members asked questions and provided input on both the staff recommendation and process.

Themes from Public Meetings

The public meetings included discussions on the following items:

- Boundary changes and long-term viability of secondary school
- Location of Kindergarten to Grade 12 school
- Suggestion of including representatives from Grand Bend Public School and East Lambton Elementary School on the ARC
- Bus ride times to and from school and traffic congestion at the Kinnwood Central School site
- Impact on the neighbours of the site and parking space at the school
- Incorporation of history and culture from the schools involved
- Discussion involving grade and division organization
- Suggestion to build new school adjacent to Shores Recreation Centre site
- Amount of green space and play area at Kinnwood Central School site
- Impact of municipal governments on the process
- Discussion on construction timeline and maintaining students and staff safety
- Academic success and mental health of students
- Specific questions related to vision of property as presented by ROA Studio Inc.
- Discussion on the grant application process
- Availability of gym time given the consolidation of schools

B.3 Community Consultations

Date	Forest Area of Schools Accommodation Review Consultation Meetings	Synopsis
September 27, 2016	Capital Plan and Community Partnership LKDSB Board Meeting	<p>The LKDSB invited municipal and community partners on the LKDSB entities list to the Board Meeting on September 27, 2016. They were provided with a copy of the agenda and LKDSB Capital Plan 2016 prior to the meeting.</p> <p>The County of Lambton provided the Board with the Population Projections for the County of Lambton Planning and Development Services Department and Administration reviewed the Draft County of Lambton Official Plan prior to the Board's Capital Plan Meeting in September 2016.</p> <p>To date, partnership offers have not been received from the municipal partners to further utilize the unused pupil spaces at any of the schools in the Forest Area of Schools Pupil Accommodation Review.</p>
October 4, 2016	Pupil Accommodation and Initial Staff Report Presented to Trustees at the Special Board Meeting	<p>The Pupil Accommodation Report and Initial Staff Report were presented to the Trustees and the public. The LKDSB approved the establishment</p>

Date	Forest Area of Schools Accommodation Review Consultation Meetings	Synopsis
		of an Accommodation Review Committee for the Consolidation of Aberarder Central School, Bosanquet Central School, Kinnwood Central School and North Lambton Secondary School into a Kindergarten to Grade 12 School at the Kinnwood Central School Site.
October 18, 2016	Meeting with the Mayor and Staff of the Municipality of Lambton Shores	Administration met with the Mayor and staff of the Municipality of Lambton Shores to outline the process involved in the Pupil Accommodation Review.
October 25, 2016	Meeting with the Mayor and Staff of the Town of Plympton-Wyoming	Administration met with the Mayor and staff of the Town of Plympton-Wyoming to outline the process involved in the Pupil Accommodation Review.
October 28, 2016	Meeting with Representative from Kettle and Stony Point First Nation	Administration met with a representative of Kettle and Stony Point First Nation to outline the process involved in the Pupil Accommodation Review.
November 4, 2016	Meeting with Staff at North Lambton Lodge	Administration met with staff at North Lambton Lodge to outline the process involved in the Pupil Accommodation Review.
December 20, 2016	Meeting with Kaeden Brown Foundation	Administration met with the Kaeden Brown Foundation representatives to outline the process involved in the Pupil Accommodation Review.
December 22, 2016	Meeting with County of Lambton Social Planning and Children Services Department	Administration met to outline the process involved in the Pupil Accommodation Review and its relation to the community hub at Kinnwood Central School.
February 7, 2017	Final Staff Report Presented at LKDSB Special Board Meeting Agenda in Sarnia	Senior Administration will deliver the report to Trustees for information. The report will be posted on the LKDSB website.
February 28, 2017	Delegations to Present at LKDSB Board Meeting in Sarnia	Information will be incorporated into the Addendum to be presented to Trustees with the Final Staff Report on March 21, 2017
March 21, 2017	Vote of Trustees at LKDSB Special Board Meeting in Sarnia	Presentation of Final Staff Report and Addendum to Trustees for consideration and voting purposes.

Relevant Discussions and Correspondence with Municipalities and Other Community Partners

The LKDSB received input and information from our municipal and community partners. In several cases, this also accompanied ongoing dialogue and participation at our public and working meetings.

Kettle and Stony Point First Nation - Cathy Hampshire, representative on the Accommodation Review Committee, expressed support on behalf of the Kettle and Stony Point First Nation for the LKDSB's plan to maintain a viable secondary school presence in north Lambton, and expressed the importance of maintaining the Rosemary Wolfe Room.

Town of Plympton-Wyoming - The LKDSB invited the Town of Plympton-Wyoming to the Board Meeting on September 27, 2016 where the Capital Plan was presented to inform all municipal partners of the LKDSB's desire to form partnerships to use unfunded student spaces in its schools. The LKDSB also initiated a meeting following the release of the LKDSB Pupil Accommodation Report and Initial Staff Report to review the process for the Forest Area Pupil Accommodation Review. Subsequently, the Town of Plympton-Wyoming delegated at Public Meeting #2 on January 23, 2017 where they proposed a boundary change for the elementary students in the Aberarder Central School catchment area. This proposed change would result in a portion of the students who presently attend Aberarder Central School to be redirected to Errol Village Public School should the consolidation take place. The representative clarified that the proposed boundary change would not impact the corresponding secondary school boundary.

The Municipality of Lambton Shores - The LKDSB invited the Municipality of Lambton Shores to the Board Meeting on September 27, 2016 where the Capital Plan was presented to inform all municipal partners of the LKDSB's desire to form partnerships to use unfunded student spaces in its schools. The LKDSB also initiated a meeting following the release of the LKDSB Pupil Accommodation Report and Initial Staff Report to review the process for the Forest Area of Schools Pupil Accommodation Review on October 18, 2016.

Social Planning and Children Services Department, County of Lambton - The LKDSB has ongoing dialogue with the County of Lambton and its Social Planning and Children Services Department. In these discussions, it was agreed it would be beneficial for information to be presented regarding the community hub located at Kinnwood Central School to the Accommodation Review Committee at Working Meeting #2 on January 26, 2017. The presentation included details in regard to the program delivery at this hub, the outreach programs to the greater community, and the desire to maintain the hub at either the Kinnwood Central School site or a new site should the consolidation take place.

LKDSB Online Communications

As part of the overall communications plan for the Forest Area of Schools Pupil Accommodation Review, the LKDSB website has been one of the primary sources for communicating details about the process to the public. To support these efforts, as well as to ensure effective and consistent communication, information has also been posted on the websites of the schools involved in the Pupil Accommodation Review. These methods of communication supported the ongoing personal engagement with students, parents, staff and members of the community.

The LKDSB website has a dedicated Accommodation Review webpage (<http://www.lkdsb.net/Board-Info/arc.htm>), which includes information from all of the Board's current and past (up to 2009) Pupil Accommodation Reviews. This webpage received a total of 3,863 hits from October 2016 to January 27, 2017.

Additionally, a webpage was established specifically for the Forest Area of Schools Pupil Accommodation Review (<http://www.lkdsb.net/Board-Info/arc8.htm>), which was launched following the October 4, 2016 Special Board Meeting. This webpage included the Initial Staff Report; dates of Public and Working Meetings; agendas and Records of Action; presentations and delegation information; and contact information. An “Accommodation Review Frequently Asked Questions” webpage (<http://www.lkdsb.net/Board-Info/arc-faq.htm>), which provides a general overview of the process, and a “Forest Area-Frequently Asked Questions” webpage (<http://www.lkdsb.net/Board-Info/arc8-faq.htm>) were also established to provide additional information and answer questions from the public.

The number of web hits on these webpages during the period of September 2016 (pre-Accommodation Review) to January 27, 2017 is outlined below:

Lambton Kent District School Board Website (<http://www.lkdsb.net/Board-Info/>)

Name	Title	Total Hits	Jan-17	Dec-16	Nov-16	Oct-16	Sep-16
arc.htm	Accommodation Review	4749	679	679	918	1587	886
arc8.htm	Accommodation Review Forest Area of Schools	1684	566	203	578	336	
arc8-faq.htm	Forest Area Accommodation Review Frequently Asked Questions	303	96	78	129		

The schools named in the Accommodation Review also shared information about the Forest Area of Schools Pupil Accommodation Review on their respective websites, including posting information on their homepages and dedicated Pupil Accommodation Review webpages, which launched on October 11, 2016. The schools’ websites also posted information about the Initial Staff Report; dates of public and Board meetings; submitting requests to delegate; school profiles; Frequently Asked Questions; the Accommodation Review email (arc@lkdsb.net); and overall timelines. The webpage statistics for the school sites from September 2016 to January 27, 2017 are outlined below:

School Websites:

Aberarder

Name	Title	Total Hits	Jan-17	Dec-16	Nov-16	Oct-16	Sep-16
Default.htm	Aberarder Central School	2719	340	598	556	661	564
pupilacc.htm	Pupil Accommodation	142	21	43	33	45	

Bosanquet

Name	Title	Total Hits	Jan-17	Dec-16	Nov-16	Oct-16	Sep-16
Default.htm	Bosanquet Central School	3223	415	634	660	752	762
pupilacc.htm	Pupil Accommodation	140	23	49	35	33	

Kinnwood

Name	Title	Total Hits	Jan-17	Dec-16	Nov-16	Oct-16	Sep-16
Default.htm	Kinnwood Central School	2983	425	606	625	696	631
pupilacc.htm	Pupil Accommodation	157	27	58	37	35	

North Lambton

Name	Title	Total Hits	Jan-17	Dec-16	Nov-16	Oct-16	Sep-16
Default.htm	North Lambton Secondary School	12515	1842	2515	2709	2955	2494
pupilacc.htm	Pupil Accommodation	214	40	95	36	43	

In addition to the information shared on the LKDSB and school websites, information about the October 4, 2016 Special Board Meeting decision by Trustees to establish the Forest Area of Schools Pupil Accommodation Review Committee, as well as dates of public meetings and deadlines for submitting requests to delegate, were shared on the LKDSB social media accounts (Facebook and Twitter).

B.4 Public Delegations to the Board of Trustees

Date	Forest Area of Schools Accommodation Review Public Delegations	Synopsis
February 7, 2017	Andrea Walden	Delegation on the Forest Area of Schools Pupil Accommodation Review.

An addendum to the Final Staff Report will include a summary of information provided by additional parties who choose to delegate to the Board of Trustees prior to the final vote on March 21, 2017.

B.5 Meetings with LKDSB Staff

Date	Forest Area of Schools Accommodation Review LKDSB Staff Meetings	Synopsis
September 2016	On-going Conversation with CLASS Transportation Consortium	Transportation staff conducted research on route review, potential boundary changes and cost analysis on the potential consolidation for the Initial Staff Report.
September 23, 2016	Initial Staff Report Conversation with LKDSB Administration	Administration met with Principals and Managers regarding proposed Pupil Accommodation Report.
October 5, 2016	Meeting with CUPE, ETFO, and OSSTF	Administration met with the Presidents of CUPE, ETFO and OSSTF to share and discuss the Pupil Accommodation Report and the process for the Initial Staff Report.
November 7, 2016	Meetings with LKDSB Employees at Kinnwood Central School	School Administration and union leadership hosted a meeting for LKDSB Senior Administration to respond to questions and receive input from Kinnwood Central School employees.
November 9, 2016	Meetings with LKDSB Employees at Bosanquet Central School	School Administration and union leadership hosted a meeting for LKDSB Senior Administration to respond to questions and receive input from Bosanquet Central School employees.
November 10, 2016	Meeting with CUPE, ETFO, and OSSTF	Administration met with the Presidents of CUPE, ETFO and OSSTF to outline the Pupil Accommodation Report and the process for discussions with school staff.
November 10, 2016	Meetings with LKDSB Employees at North Lambton Secondary School	School Administration and union leadership hosted a meeting for LKDSB Senior Administration to respond to questions and receive input from North Lambton Secondary School employees.
November 21, 2016	Meetings with LKDSB Employees at Aberarder Central School	School Administration and union leadership hosted a meeting for LKDSB Senior Administration to respond to questions and receive input from Aberarder Central School employees.
February 17, 2017	Meeting with CUPE, ETFO, and OSSTF	Administration plans to meet with union leadership to continue dialogue in regard to Accommodation Reviews.

C. Staff Recommendations and Rationale

Following consultations during the Forest Area of Schools Pupil Accommodation Review process, LKDSB Senior Administration recommends the following:

C.1 Recommendation #1

“That the Board approve the consolidation of Aberarder Central School, Bosanquet Central School, Kinnwood Central School and North Lambton Secondary School into a Kindergarten to Grade 12 School on a site to be determined as of September 1, 2020 and the submission of grant applications to the Ministry of Education for funding for the construction of the new school and the acquisition of land; and that the Board close Aberarder Central School, Bosanquet Central School, Kinnwood Central School and North Lambton Secondary School as of July 1, 2020.”

C.2 Recommendation #2

“That the Board approve the consolidation of Aberarder Central School, Bosanquet Central School, Kinnwood Central School and North Lambton Secondary School into a Kindergarten to Grade 12 School on the Kinnwood Central School Site as of September 1, 2020 and the submission of grant applications to the Ministry of Education for funding for the construction of the addition and the acquisition of land adjacent to the Kinnwood Central School Site; and that the Board close Aberarder Central School, Bosanquet Central School and North Lambton Secondary School as of July 1, 2020.”

Rationale

The following rationale applies to both Recommendation #1 and Recommendation #2:

C.1.1 Summary of Accommodation Issue for the Schools Under Review

- In the Forest Area, three of the four schools are under capacity for student enrolment and have a significant number of unfunded pupil spaces.
- All four of the schools require significant capital work, according to both the 5 and 10-year Facility Condition Index (FCI).
- The schools are located less than 20km from each other. Geographically, all three elementary schools surround the town of Forest and all three schools feed into North Lambton Secondary School.
- Top-up funding for both Aberarder Central School and Kinnwood Central School will be phased out by the start of the 2017/2018 school year.
- Senior Administration believes consolidating these schools will allow the LKDSB to improve the learning environment and enhance programs for the foreseeable future, while achieving financial efficiencies and maintaining a strong school presence in this area of the district.

This consolidation into a Kindergarten to Grade 12 school would result in a total combined enrolment in 2020 of approximately 1,038 students. The combined student population from Kindergarten to Grade 8 is projected to be 536 students in September 2020. Currently the LKDSB has five elementary schools with populations that exceed 500 students. North Lambton Secondary School is projected to maintain a similar population in September 2020 at 502 students.

Significant dialogue has taken place during the Pupil Accommodation Review process in regard to the organization of a Kindergarten to Grade 12 school. The model of intermediate grades located in a secondary school is successfully demonstrated in two locations in the LKDSB (Ridgetown District High School and Wallaceburg District Secondary School). As well, the Accommodation Review Committee toured Walkerton District Community School on January 11, 2017, which is a Kindergarten to Grade 12 school, where access to specialized areas has been successfully implemented.

Should the LKDSB be granted funds for the construction of a new school or for the construction of an addition to the Kinnwood Central School site, Senior Administration would establish and seek input from a Transition Committee on the architectural design of the proposed school. The use of specialized areas in a school could be achieved while still maintaining an individual identity in the elementary portion of the school. In addition to this, there is an opportunity for senior students to take on leadership and mentoring opportunities with the elementary grades.

Positive program enhancements could occur in the intermediate years of Grade 7 to Grade 9. There is the potential for the broadening of program delivery in these grades. The Kindergarten to Grade 12 school would also reduce the transition from an elementary to a secondary school, creating greater opportunity for staff to support literacy and numeracy needs of the students who attend this school. In addition, all grades would have access to specialized areas of the school, a modern athletic facility and more concentrated support staff. This increased opportunity coincides with the Ministry's Experiential Learning initiative which calls for schools to provide opportunities for intermediate students to have hands-on and activity-based learning experiences.

The LKDSB would like to engage its community partners to assist in developing a building that would be beneficial to student learning, but also embrace the traditions of Kettle and Stony Point First Nation, the Municipality of Lambton Shores, the Town of Plympton-Wyoming, and Warwick Township.

C.1.2 Summary of Enrolment and Financial Data

Schools	Enrolment Sept 14-16 / Capacity 2016	Capacity %	FCI/Cost of Facility Work (5 year)	FCI/Cost of Facility Work (10 year)	Primary Concerns	Transportation Costs Due to Closure	Proximity to Kinnwood Central Site
Aberarder Central School	114/199	57	39.10%/\$2,177,595	43.92%/\$2,446,023	Facility Renewal	Increase	13.2km
Bosanquet Central School	184/328	56	46.53%/\$3,397,156	52.96%/\$3,866,687	Facility Renewal	Increase	18.4km
Kinnwood Central School	278/331	84	43.06%/\$3,153,716	52.97%/\$3,879,091	Facility Renewal	Increase	Not Applicable
North Lambton Secondary School	547/822	67	52.29%/\$10,443,093	65.01%/\$12,982,058	Facility Renewal	Increase	1.4km
Total	1123/1680	67	N/A	N/A	N/A	Option I - \$87,000, Option II - \$96,000	N/A

Operating Costs and Revenue Analysis

Estimated Annual Financial Savings from Proposed Consolidation

Operating Costs - by School - 3 Year Average - projected savings
(Actual Costs are the average of the 2013/2014, 2014/2015 and 2015/2016 school years)

The below table shows the annual costs incurred by LKDSB for North Lambton Secondary, Aberarder Central, Bosanquet Central and Kinnwood Central Schools in the event that a consolidation is approved by the Board of Trustees. The information in the table is based on an average of actual expenditures at each school for the 2013/2014, 2014/2015 and 2015/2016 school years.

Cost Category	Cost Type - (Actual or 3 Year Average)	North Lambton	Aberarder	Bosanquet	Kinnwood	Total
Utilities - Hydro	Operating - 3 year average	\$ 99,623.16	\$ 15,633.55	\$ 26,413.03	\$ 44,355.86	186,025.60
Utilities - Gas	Operating - 3 year average	32,685.07	32,332.84	15,224.99	21,452.55	101,695.44
Utilities - Water	Operating - 3 year average	19,094.47	10.52	3,773.73	9,326.06	32,204.78
Water Testing	Operating - 3 year average	-	62,857.69	-	-	62,857.69
Maintenance & Repair	Operating - 3 year average	44,072.75	22,353.14	15,571.31	23,106.41	105,103.61
Custodial & Housekeeping	Operating - 3 year average	52,743.81	20,841.97	25,492.89	45,371.64	144,450.31
Annual Maintenance Plan	Operating - 3 year average	53,552.06	12,795.14	32,482.19	13,967.24	112,796.63
Furniture and Equipment	Operating - 3 year average	21,844.53	3,052.08	3,701.41	5,067.00	33,665.02
Custodial Contract	Operating - 2016 Actual	-	43,642.08	60,512.40	-	104,154.48
Secretary Staffing	Operating - 2016 Actual	136,673.28	39,582.39	44,472.22	42,891.64	263,619.53
Custodial Staffing	Operating - 2016 Actual	230,884.69	-	-	130,085.01	360,969.70
Principal Staffing	Operating - 2016 Actual	128,008.41	114,124.01	114,124.01	118,327.90	474,584.33
Vice-Principal Staffing	Operating - 2016 Actual	93,490.54	-	-	-	93,490.54
Total:		\$ 912,672.77	\$ 367,225.39	\$ 341,768.19	\$ 453,951.31	\$ 2,075,617.66

The above cost saving analysis includes the costs for school administration which includes Principals, Vice-Principals and School Secretaries. Principals, Vice-Principals and School Secretaries are funded from the School Foundation Grant - The Board would see a reduction in the School Foundation Grant as a result of the elimination of these positions. The net financial impact to the Board would be zero. Aberarder Central Public School operating costs include water testing costs as this school's water supply is provided by well. This school's gas usage is propane. The utilities-gas amount for Aberarder Central Public School is the average annual cost for propane over the 3 year period.

C.1.3 Transportation

Initially in discussions with the community, there were reservations in regard to busing students to the consolidated Kindergarten to Grade 12 school with a single bell time, which is the Tier 1 option. However, the community of Forest, which already utilizes the Tier 1 busing, expressed support for the Tier 1 option. When the ARC visited Walkerton District Community School, they witnessed a Tier 1 busing model in place in that community. There is no significant cost differential between either Tier 1 or Tier 2 busing model. Should the consolidation occur for a Kindergarten to Grade 12 school, the final decision regarding bus transportation and school bell times would remain with Senior Administration and CLASS, with input from the Transition Committee that would be in place representing all consolidated schools.

At Working Meeting #1 and Public Meeting #2 CLASS presented information to describe ways to mitigate congestion at the consolidated school at a new location or the Kinnwood Central School site. These include options that are in use in other areas of the LKDSB that would be comparable to traffic mitigation solutions suggested for the proposed Kindergarten to Grade 12 site. CLASS stated that they would work with the Municipality and with the architects on the project to make a workable plan for traffic flow and student safety. Traffic mitigation strategies included:

Site Design

- Ensure adequate loading zone space for buses.
- Appropriate flow of buses/pedestrians/motorists/guardians.
- Leverage multiple locations on the site at same time.

Student Loading/Unloading Process

- Efficient placement of students adjacent to loading zone.
- Potential staggered dismissal for bus and walk students.
- Organized, consistent and defined process.

Route Timing

- Staggered bus arrival/departures with “waves” to minimize traffic and align with site configuration and school processes.
- School approach routes: diversify where appropriate.

C.1.4 School Boundaries

A delegation was made at Public Meeting #1 requesting a change to the western portion of the boundary of the current Aberarder Central School catchment area to be redirected to Errol Village Public School. Subsequently the LKDSB received three petitions, each proposing that a section of the western portion of the current Aberarder Central School catchment area be redirected to Errol Village Public School. The Board also received one petition asking for no boundary changes to take place. These four petitions are outlined below. In addition to this, as mentioned earlier in this report, the Town of Plympton-Wyoming suggested a boundary change to the present elementary catchment area for Aberarder Central School during their delegation at Public Meeting #2.

Petition 1: Request to re-examine and revise catchment boundaries in order for the area of Bonnie Doone to be included in the Errol Village Public School Catchment Area
13 signatures

Petition 2: Petition for Camlachie Students to Attend Errol Village Public School
6 signatures

Petition 3: Petition to revise boundaries for Aberarder Children of the Bluepoint/Sunset Acres subdivision to be re-routed to Errol Village Public School
7 signatures

Petition 4: To: The Lambton Kent District School Board, Trustees and ARC Committee, Forest
WHEREAS The following individuals have signed this petition in support of maintaining the current Lambton Kent District School Board Boundaries as they relate to the North Lambton Secondary School and its feeder schools, (Bosanquet Central School, Hillside Elementary School, Grand Bend Public School, East Lambton Public School, and Aberarder)
AND WHEREAS the following individuals have signed this petition as they believe that a vibrant, viable public secondary school is necessary in North Lambton.
80 signatures

Petition 5: A second petition from the Bonnie Doone area to show continued support for the request to revise the LKDSB boundary to include the Bonnie Doone area within the Errol Village Public School catchment zone and subsequently Northern Collegiate Institute and Vocational School (NCIVS). This petition was received February 1, 2017
17 signatures

Administration has analyzed the requests to change the boundaries. Any change in boundaries in this area will potentially hinder the long-term enrolment viability of the Kindergarten to Grade 12 school and will affect programming for the secondary panel of the school. Therefore, Senior Administration supports maintaining the present boundaries identified for the Kindergarten to Grade 12 school.

5-year History of NLSS Catchment Area Feeders – Choice of Secondary School

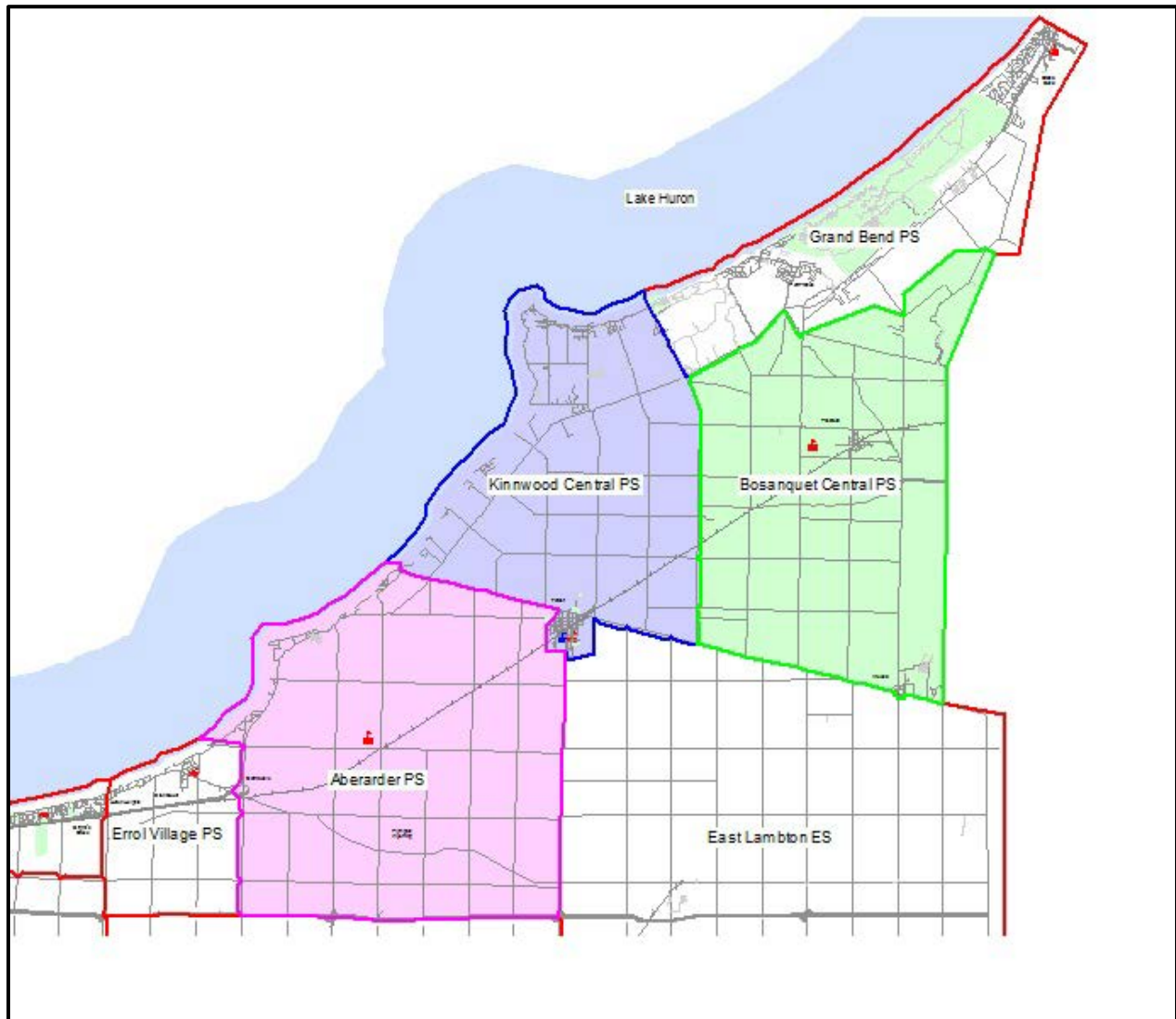
Year	Total Grads-NLSS Feeders	Attend NLSS	Attend Other LKDSB School	Other Boards
2011-12	103	63	26	14
2012-13	109	81	17	11
2013-14	101	61	19	21
2014-15	106	69	15	22
2015-16	95	75	8	12
Totals	514	349	85	80
	Average	67.90%	16.54%	15.56%

Aberarder Central School had a total of 89 graduates from 2011 to 2016. Of the 89 graduates, 66 students (74.16%) have chosen to attend North Lambton Secondary School, as outlined in the chart below.

	NLSS	Other LKDSB School	Other Boards
Average	74.16%	12.36%	13.48%

In summary, any change to the boundary will result in fewer students attending the secondary portion of the consolidated Kindergarten to Grade 12 school in Forest as Errol Village Public School is a feeder school to Northern Collegiate Institute and Vocational School.

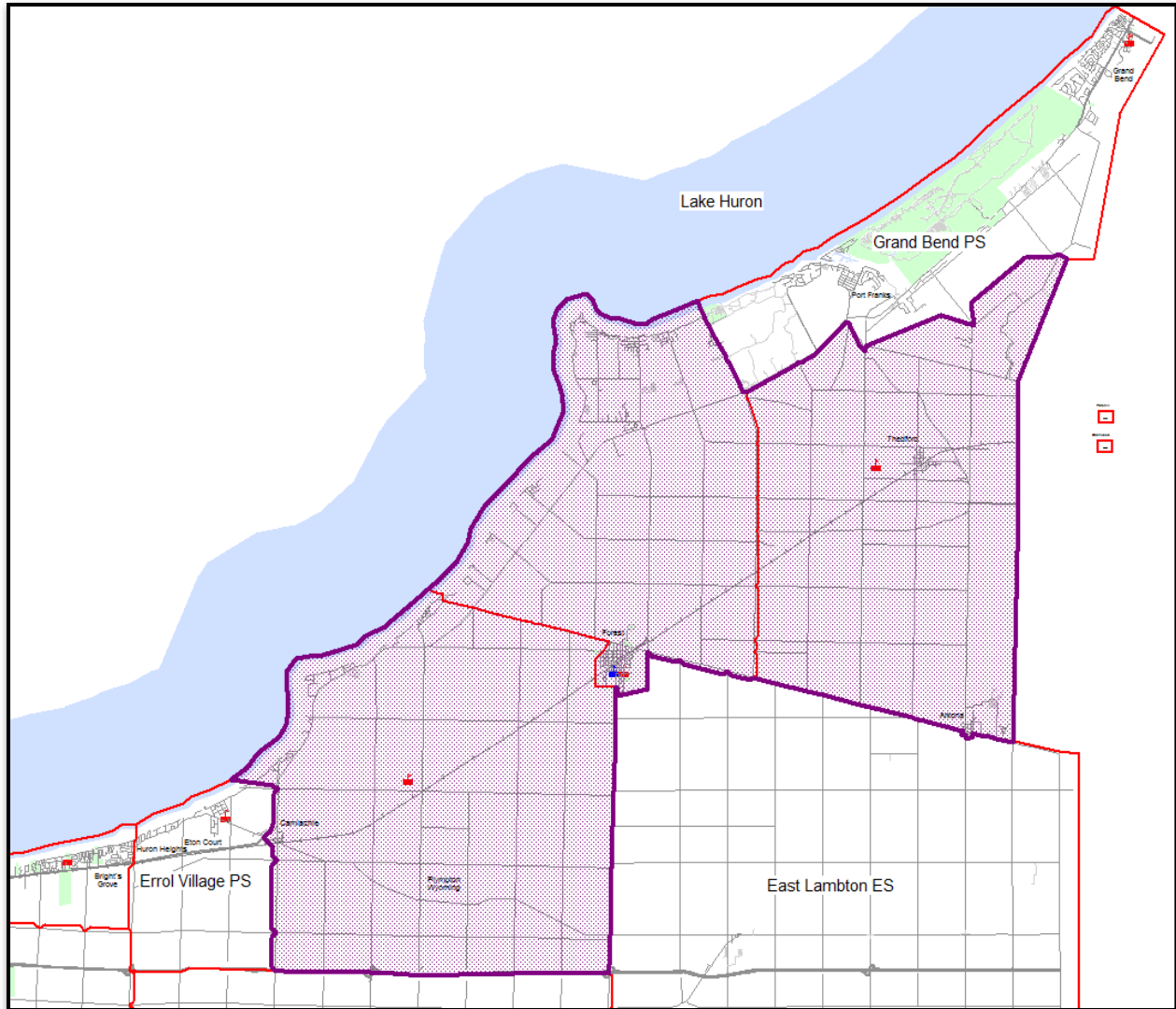
Forest Area Existing Elementary School Boundaries



North Lambton Secondary School Boundary



Forest Area of Schools Proposed Elementary School Consolidated Boundary



C.1.5 Health and Safety

Aberarder Central School: Drinking Water System

Aberarder Central School is the LKDSB's only school with drinking water provided from a well supply. Under the Safe Drinking Water Act, Aberarder Central School's drinking water system is classified as a "Small, Non-Municipal, Non-Residential" system serving a "Designated Facility" and is regulated by O. Reg. 170/03. Ontario Clean Water (OCWA) is our qualified Drinking Water System Operator for Aberarder. OCWA provides management, maintenance and operation services; the service includes 24/7 response to alarm calls.

OCWA's average annual fee over the past four years is \$59,496. Additional costs related to repairs that are over and above routine maintenance are billed separately by time and materials; annual average over the past four years is approximately \$4,500.

C.1.6 Architectural Review (applies to Recommendation #2 only)

In the Pupil Accommodation Review process the LKDSB hires an architect to inform the Accommodation Review Committee and the LKDSB on the potential construction associated with consolidation. In the Forest Area of Schools Pupil Accommodation Review, the LKDSB hired ROA Studio Inc. This architectural firm, at the request of the LKDSB, sent representatives to Working Meeting #1 to explain their role in the process to the committee. ROA Studio Inc. also responded to questions and gathered input to create a vision for a proposed Kindergarten to Grade 12 school on the Kinnwood Central School site. This information was presented and discussed at Public Meeting #2 and Working Meeting #2.



Recommendation #3

“That the Board approve the closure of Aberarder Central School and the consolidation of the students with the Kinnwood Central School students at the Kinnwood Central School Site as of July 1, 2018 if funding is not provided by the Ministry for the construction of a Kindergarten to Grade 12 school at a site to be determined or for an addition at the Kinnwood Central School Site.”

Rationale

Should the LKDSB not receive Ministry funding for Recommendation #1 or Recommendation #2, the LKDSB would close Aberarder Central School and consolidate these students at Kinnwood Central School in September 2018. The projected population for Kinnwood Central School in 2018 is 263 students and Aberarder Central School in 2018 is 106 students, for a combined total of 369 students. The present capacity of Kinnwood Central School is 331. The LKDSB would utilize its own capital funds to accommodate the increase in student enrolment.

Recommendation #4

“That the Board dissolve the Forest Area Schools Accommodation Review Committee.”

Recommendation #5

“That the Board approve the establishment of an Ad Hoc Naming Committee to recommend to the Board a name for the consolidated Kindergarten to Grade 12 Aberarder Central School, Bosanquet Central School, Kinnwood Central School and North Lambton Secondary School and appoint two Trustees to serve on the Committee.”

Rationale

The practice of the Board has been to establish a Naming Committee when schools are consolidated.

In accordance with Board Regulations R-AD-105, when schools are consolidated into one school, the renaming of Board facilities will be followed. This requires the Director of Education to establish an ad hoc committee to recommend a name to the Board for approval.

The Committee is to be comprised of:

- (a) two trustees, appointed by the Board (one to chair the committee),
- (b) one facility administrator (principal or principal designate if applicable),
- (c) two representatives of the School Advisory Councils (if applicable),
- (d) two community representatives,
- (e) one member of the senior administration.

D. Formation of a Transition Committee

If the Board approves the consolidation of the Forest Area of Schools, a Transition Committee would be struck to address the transition of students and staff.

Transition Committee membership consists of Superintendent(s) of Education or designates, CUPE, ETFO and OSSTF President/Vice President and from each school Involved - principal, two teachers, School Council Chair, clerical/custodial staff, parent/community member, First Nation Partner, educational assistant and two students. Subcommittees are developed as needed and may have members that are separate from the Transition Committee members. The Transition Committee would be responsible for such things as school orientation/transition, memorabilia, resources and equipment, special events (including graduation and awards) and extra-curricular activities.

The Accommodation Review process is still underway, with opportunities for public delegations at the February 28, 2017 Board Meeting. Any changes to the Final Staff Report as a result of public delegations, will be included in the Addendum to the Final Staff Report to be presented to Trustees for approval at the March 21, 2017 Special Board Meeting. The March 21, 2017 Special Board Meeting will be held in Sarnia beginning at 6:00 p.m.

APPENDIX A

ARC Final Input to LKDSB Senior Administration for Inclusion in the Final Staff Report

<p>Comments from the ARC Members</p>	<p>Bailie Richards, Student Representative, Bosanquet Central School, stated the following at Working Meeting #2:</p> <p>“It’s a bad idea. In my mind, from a kid’s perspective, it just doesn’t seem like a K-12 school is going to work right now, there’s just too many problems.”</p> <p>Chris O’Reilly, Community Representative, Bosanquet Central School, stated the following at Working Meeting #2:</p> <p>“This is both a difficult process and an opportunity. The difficulty: none of us want change; we all like things in our comfort zone. It is a difficult process for those of you who work for the Board; I admire your work and don’t envy the task that you have because it is difficult on many layers. In other contexts, I have had to do some of the same thing, so I appreciate that these decisions are difficult.</p> <p>At these meetings, our committee has conducted themselves with a lot of respect and fairness, which I think is a testimony to the community of Lambton Shores regardless of where we call home. This is a sign that we live in a community that cares very much about our community, about our kids, and about one another. In rural communities we are used to rubbing shoulders with, and living side by side with, people with very different opinions than we do. But when the chips are down, this community pulls together. I am proud to live in a community where cars still pull over for a funeral procession, and where young people on the main street will stop and take their hats off. I am proud to live in a community where people are willing to step up and offer their time. We have talked with our youth group about that- Bailie was there- about the importance of young people being involved in processes like this, especially as they grow into adulthood. You don’t always get what you want, but you have the opportunity to express your opinion and not to let anybody intimidate you into thinking you don’t have something to say.</p> <p>I believe we have an opportunity here to do something here terrific. We have an opportunity to build a community school that will offer something to this community, beyond its borders, and to the future of Lambton County. I want this to be a school that works for everyone. I want this to be a school that parents want to send their children to. I want this to be a school that is going to benefit every community within Lambton Shores and will make us proud. It is critically important that we do this right – which is not necessarily the easiest, or cheapest, or politically dictated way. Please do this right; listen to what this community is saying.”</p> <p>Tim Houle, Parent Representative, North Lambton Secondary School, stated the following at Working Meeting #2:</p> <p>“I’m frustrated by not having actual results. I feel like we have talked about a lot but I guess what you want is just to gather all of that information and give it to the Trustees to make their decision. I want to say there is a reason why building here is also good. A couple of them are access to nursing home, I think there’s value in the high school students being here as well, also I think we would hurt the businesses downtown by removing all the high school students from here, because they do go down there and eat at Joey Little’s and Godfather’s, I think they live off of their income. I see a lot of value in just building here. I am scared about traffic and the busing and the parents that pick their kids up from Kinnwood so I’m hoping that can</p>
--------------------------------------	---

all be worked out. I was against building here originally but now that I've seen the design and I've seen what we can do and where we are."

Megan McIntyre, Student Representative, North Lambton Secondary School, stated the following at Working Meeting #2:

"I just think generally from the people I've talked to at my school that they are kind of leery about the whole thing, just because this is our school, and they are kind of leery about this location because a lot of them are from here and think it's a small area, and from the people I've talked to they want a new school if we are going to do it at all because they don't really know how it's going to work. Just want to make sure for the high school portion that if you do have it added on that they have everything represented: the drama kids who want their drama, and the tech. kids want their good tech. rooms, and the science kids want good science labs. They would be more comfortable with the whole transition if we have those proper facilities in order so that everybody can be included."

Cathy Hampshire, First Nation Representative, Kettle and Stony Point First Nation, stated the following at Working Meeting #2:

"On behalf of Kettle and Stony Point First Nation we appreciate being included in this process. The consultation piece is a huge piece that has not always been between our community and the Board historically, but those are days of the past. Going forward Kettle and Stony Point values the relationships around its surrounding communities. We support a strong vibrant secondary program in the north area. We don't want to send our kids any further away than they are right now. We actually do send some of our students in to Sarnia for accessing Special Education programs and that which we would like to see an enhanced program at North Lambton so that some of our students that have to go in to Sarnia each day and get on the bus at 6:30, they don't have to travel that distance. We would like to encourage a strong secondary program here. We do have big concerns about that inclusion piece if it's a K-12 school and there's a huge fear in that. We appreciate being included and that our voice is being listened to and hopefully we will have a new build in a new location. We expect that going forward, whatever the decision is from the Trustees with regards to a school servicing the North part of the County, it will ensure that it incorporates and welcomes a strong indigenous voice."

Andrea Walden, Parent Representative Bosanquet Central School, provided Superintendent Girardi with the following statement following Working Meeting #2:

Community members in north Lambton are saddened at the proposed loss of our small rural elementary schools. Many people I have spoken to appreciate the financial constrains the LKDSB is under as a result of the Ministry of Education's funding formula for rural schools which under-funds schools in rural Ontario.

This community is arguably unique in the Province as instead of focusing on trying to keep the rural elementary schools open, we have focused on attempting to work with the LKDSB to create the best possible new school for our community. The LKDSB should build the proposed new school near the existing Shores Recreation Centre (arena/indoor track and gym) and should "partner" with the Municipality of Lambton Shores to utilize this existing facility for the benefit of the students and community. The new school should also reflect the culture and economic needs of the community by focusing on STEM subjects and the trades which will benefit both students' educational opportunities and the economy of this community.