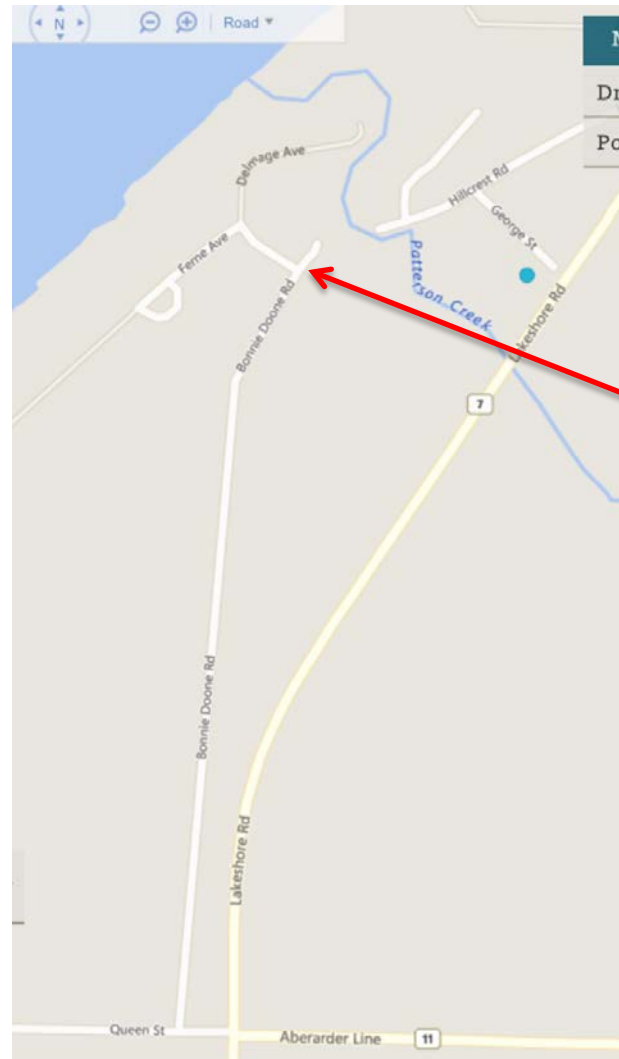


Request to Revise Catchment
Boundaries to include the Area of
Bonnie Doone in the Errol Village
School District

Bonnie Doone

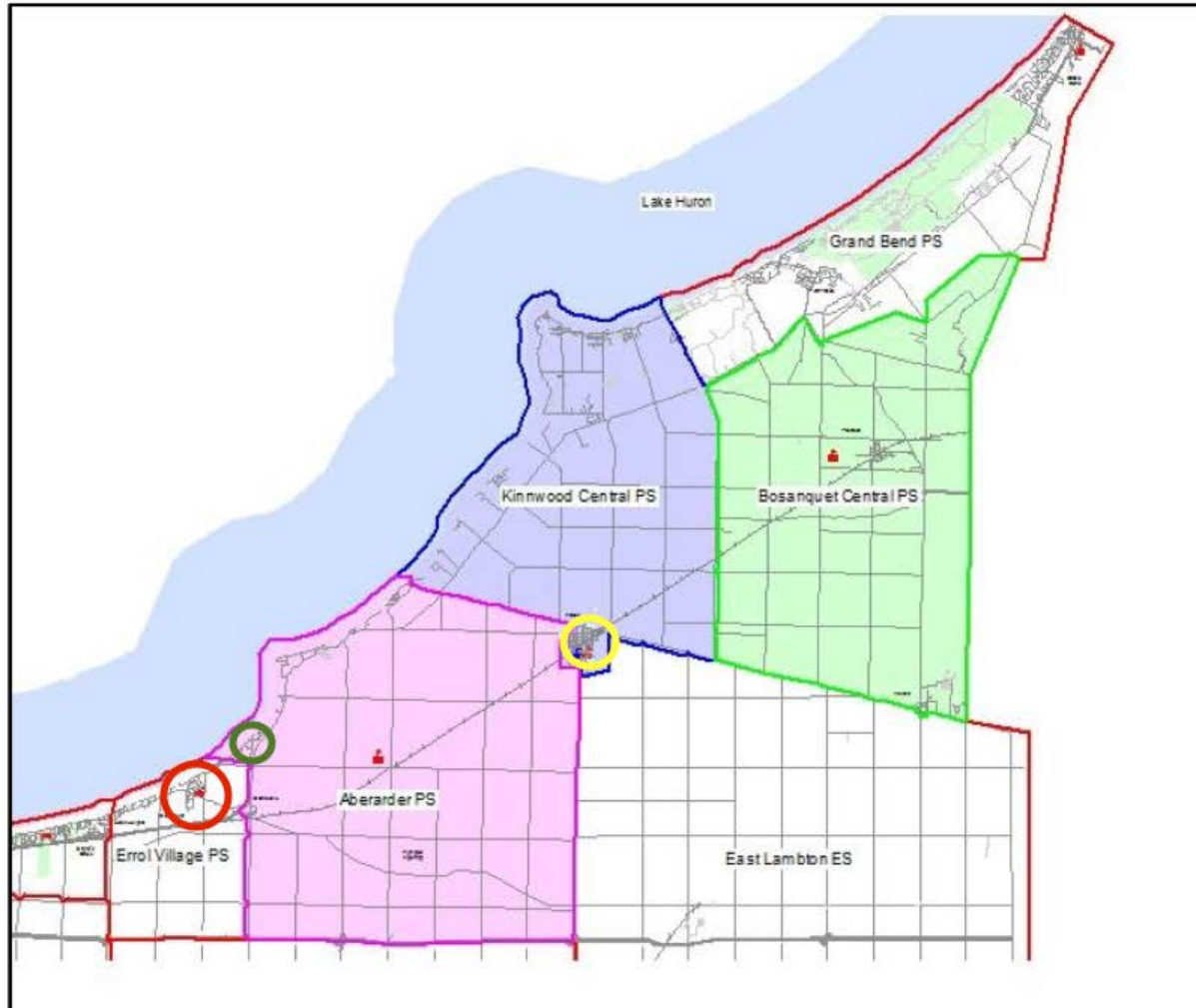


NO EXIT FROM BONNIE
DOONE AREA

One way in/out from Queen
St., Camlachie

Area of Bonnie Doone boundaries- North of Queen st, West of
LakeShore/Bonnie Doone Rd, bordered by Lake Huron & Patterson Creek

Forest Area Existing Elementary School Boundaries

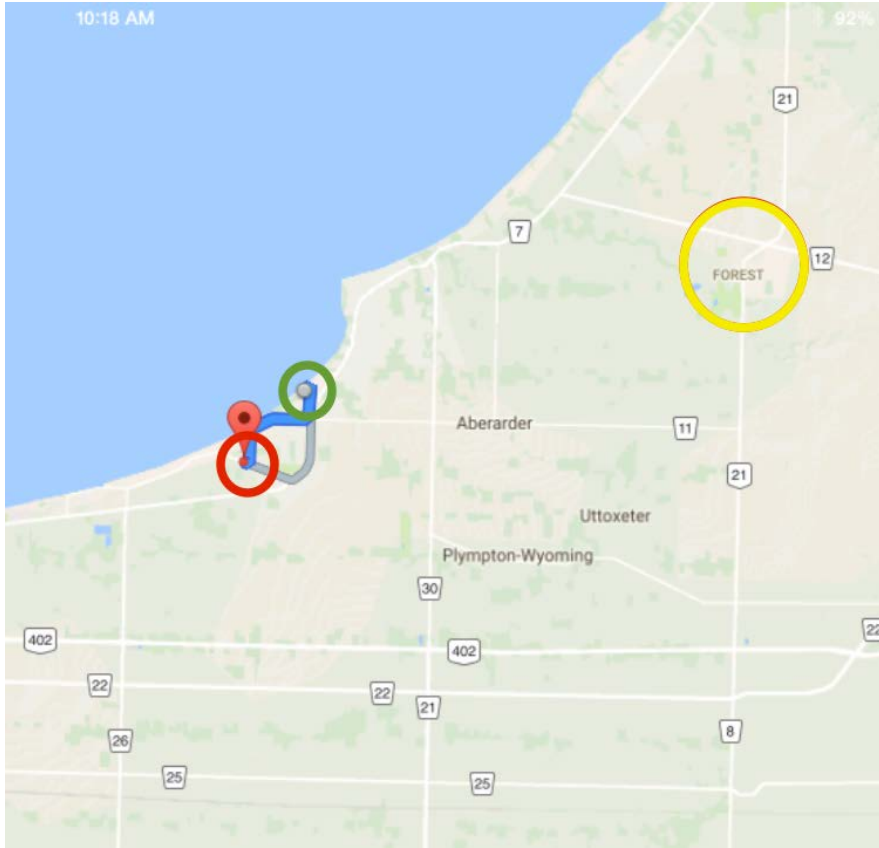


Errol Village Public school

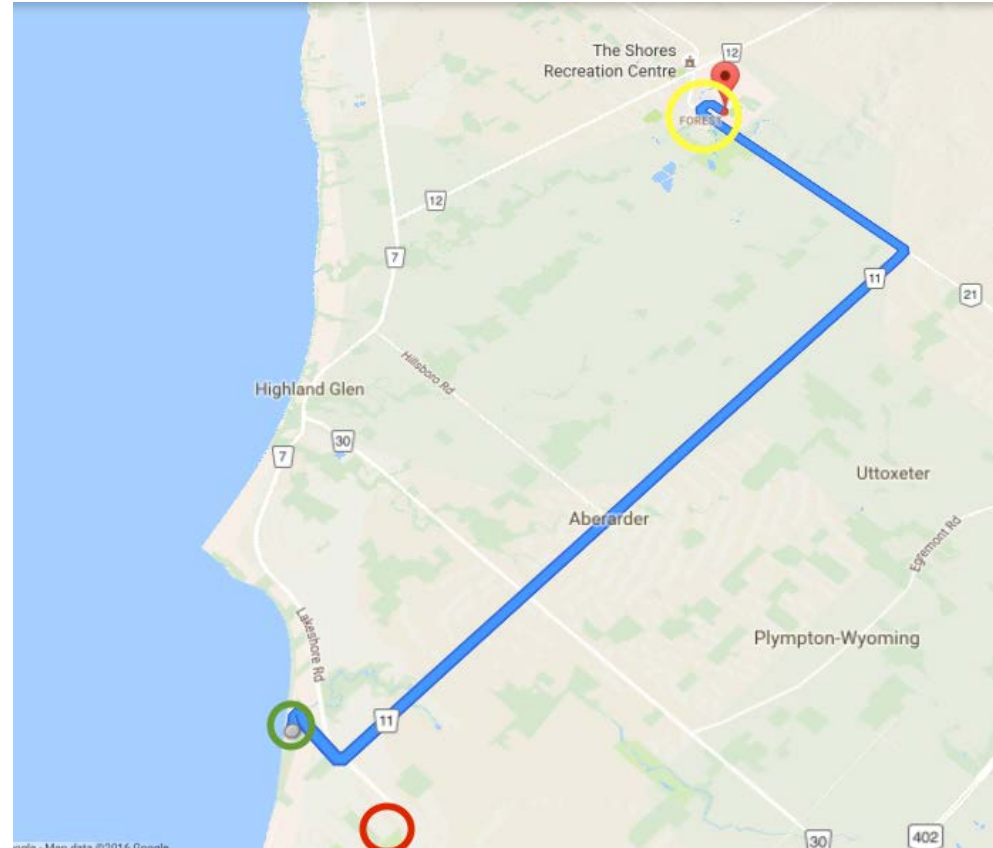
Bonnie Doone Area

Kinwood/Forest

Bonnie Doone to Errol Village



Bonnie Doone to Kinwood



4.5 km to Errol village school
20km to Kinwood Public school

Reasons for Requesting Reassessment and Revision of Boundaries to Include the Area of Bonnie Doone in the Errol Village Public School Catchment Area

- Work in Sarnia
- Before & After School Program Drop Off- length of time children will spend at school, work obligations (getting to work on time for 7:30am in Sarnia with Before school not starting until 7am)
- Picking up an ill child
 - distance Sarnia- Errol Village Public School 25km
 - distance Sarnia-Kinwood Public School 47km
- Sense of community & support, in case of emergency, no contacts in the Forest area. Benefits of attending a school within your own community/address

Reasons for Requesting Reassessment and Revision of Boundaries to Include the Area of Bonnie Doone in the Errol Village Public School Catchment Area- Cont'd

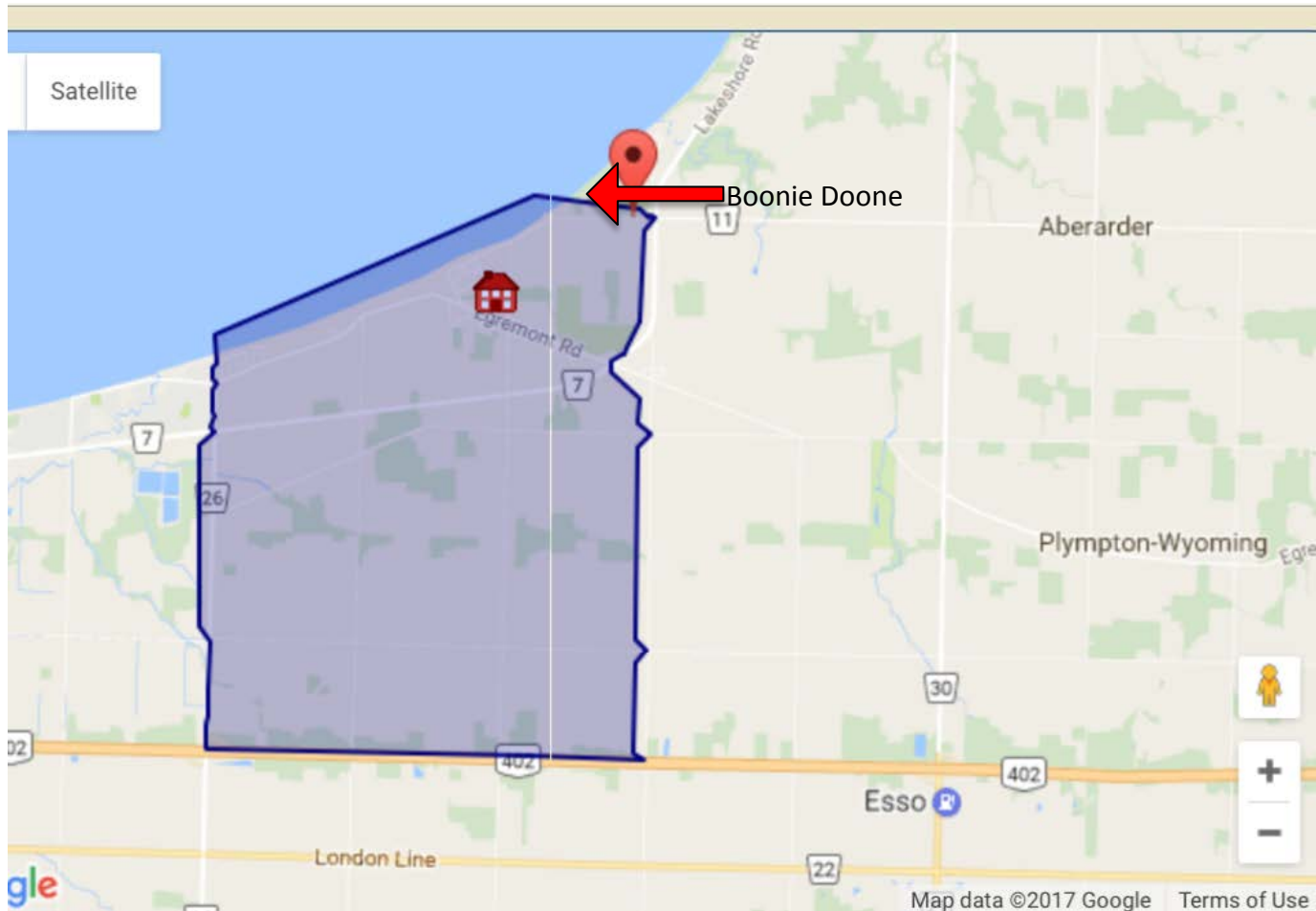
- Medical & other appointments located in Sarnia (eg. Pathways Health Centre for Children)
- Active participation in school community- attending parent council meetings, school assembly/concerts, meet the teacher nights, sports
- Children's extracurricular activities are located in Sarnia (after school swimming lessons, hockey etc.)

Reasons for Requesting Reassessment and Revision of Boundaries to Include the Area of Bonnie Doone in the Errol Village Public School Catchment Area- Cont'd

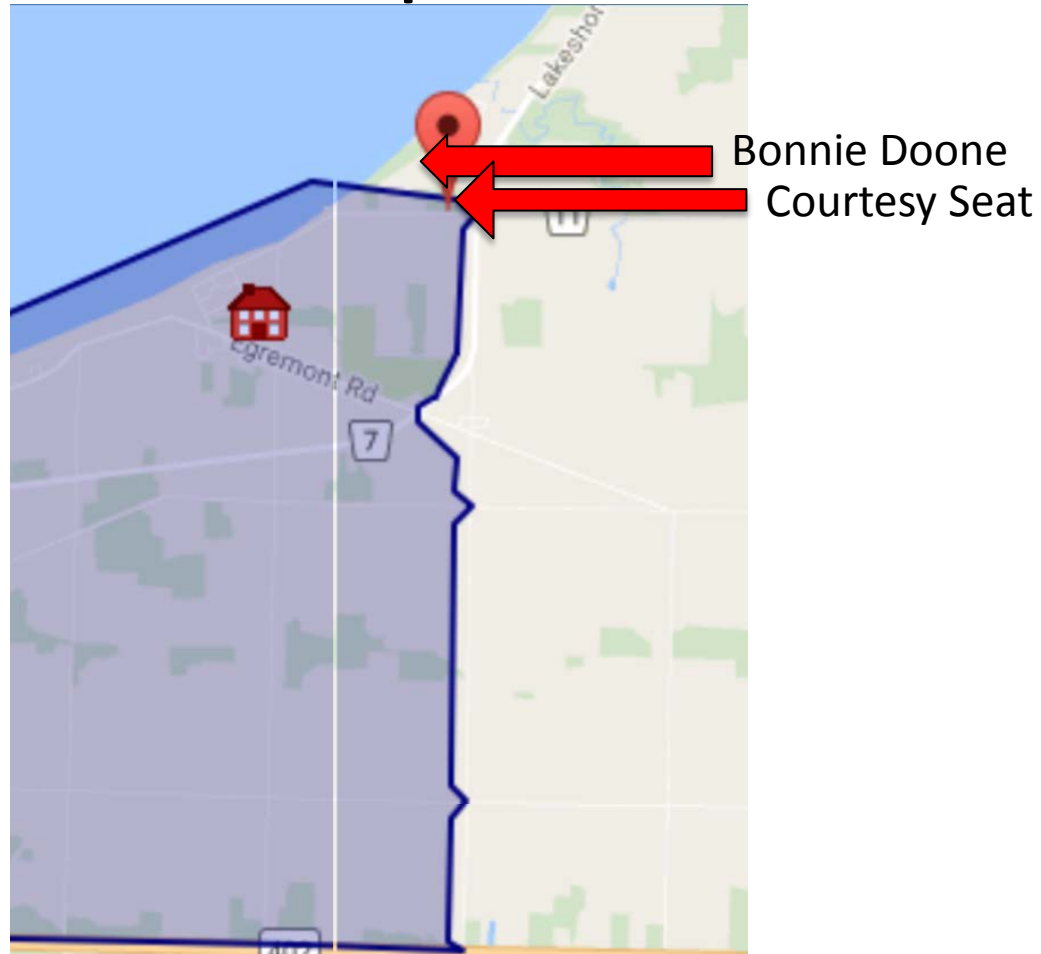
- Would be forced to transfer from Public school board to Catholic school board
- At this time Gregory A. Hogan & St. Patrick's Catholic Schools provide busing to our area & parents/residents in Bonnie Doone have chosen these options (see petition) due to accessibility
- Plan to attend highschool in Sarnia (Northern Collegiate or St. Patricks Catholic High School).
- Buses that service Forest area schools are required to enter into Errol Village zone to pick up children (on Queen St)
- Would not increase cost or time to extend buses into Bonnie Doone as a bus stop is already located at Bonnie Doone Road for Errol Village school

Bus Information

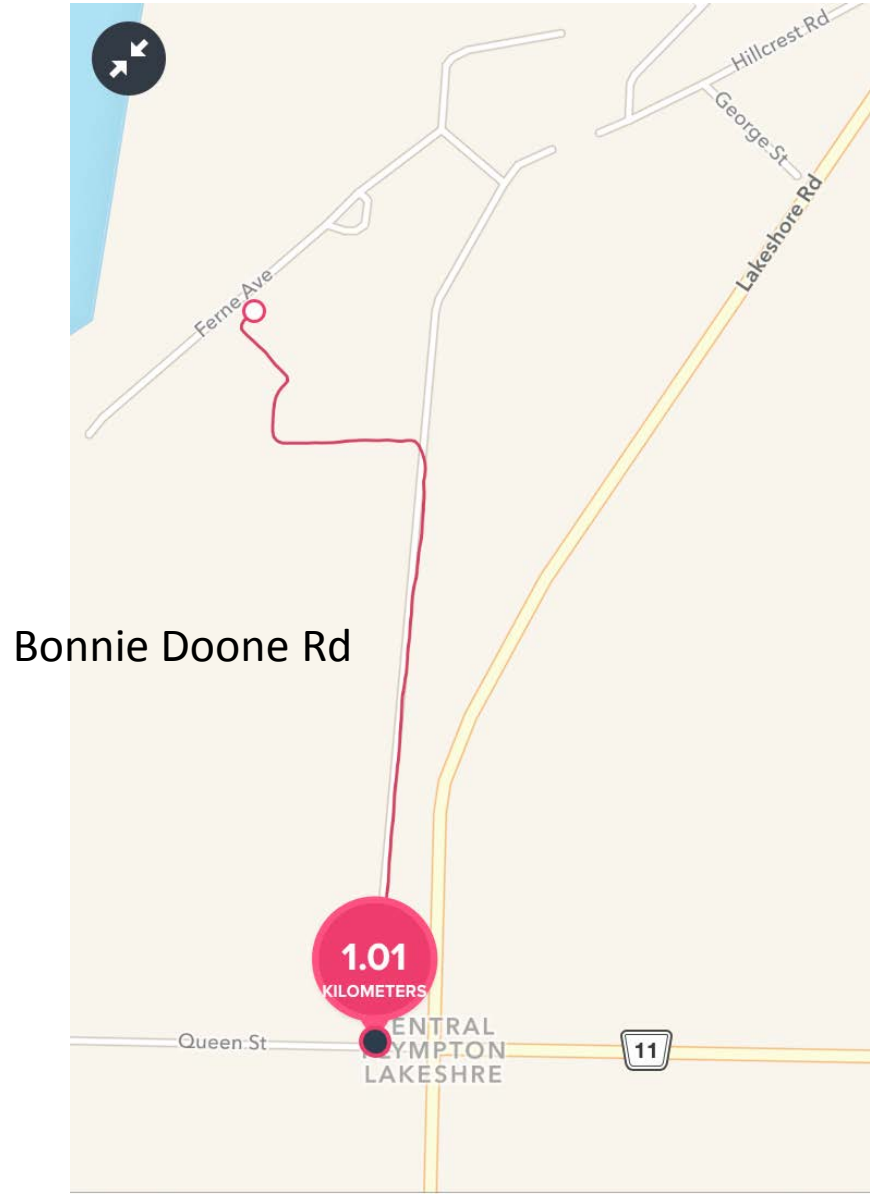
Errol Village Attendance Boundary



Errol Village Bus Zone and Courtesy Stop



Distance to Errol Village Bus



Errol Village Public School Declining Enrolment Projections

Errol Village Public School 5 Year Enrolment History

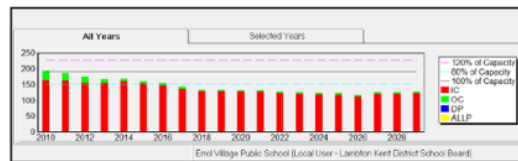
Grade	2010	2011	2012	2013	2014
JK	15	11	17	13	14
K	10	16	12	19	16
1	22	12	16	12	19
2	19	23	13	15	13
3	19	18	23	12	18
4	23	22	17	24	12
5	15	22	20	16	22
6	23	13	21	20	16
7	24	23	13	22	17
8	23	26	22	17	22
Total	193	186	174	169	169

Enrolment Actual – October

Year	JK	K	1	2	3	4	5	6	7	8	Total
2015	15	13	15	20	13	19	12	22	16	17	162

10 Year Enrolment Projections

Grade	2016	2017	2018	2019	2020	2021	2022	2023	2024	2025
JK	16	5	12	11	12	11	12	11	12	11
K	13	18	6	14	13	14	13	14	13	14
1	15	13	18	5	14	13	14	13	14	13
2	15	15	13	18	5	14	13	14	13	14
3	18	15	15	13	18	5	14	13	14	13
4	12	18	15	15	13	18	5	14	13	14
5	16	11	17	14	14	12	17	5	13	12
6	11	16	11	17	14	14	12	17	5	12
7	21	11	16	11	17	14	14	12	17	17
8	15	21	10	16	11	17	14	14	17	17
Total	152	143	133	134	131	132	128	127	127	125



Errol Village Public School Declining Enrolment Projections

- 5 year enrolment history and 10 year projections show a declining enrolment at Errol Village Public school demonstrating a need to maintain long term viability within our own community