

SCHOOL INFORMATION PROFILE

Name of School: Tecumseh Public School

Date: October 27, 2016

Page 1

Facility Profile

- Site plan and floor plan(s) (or space template) of the school with the date of school construction and any subsequent additions.

Site Plan and Floor Plan are attached (pages 9-11).

Year of Construction	Type of Construction	Area (square meters)
1956	Original Building	4,042
1960	Addition	1,307
1964	Addition	90
1974	Addition	476
Total Building Area		5,915 (63,671 sf)

- School attendance area (boundary) map

Map is attached (page 12).

- Context map (or air photo) of the school indicating the existing land uses surrounding the school.

Map is attached (page 13).

- Planning map of the school with zoning, Official Plan or secondary plan land use designations.

Map is attached (page 14).

Legal Description: 287 McNaughton Ave West; Plan 412 PT LOT 4 PT LOT 18
Municipality of Chatham Kent

- Size of the school site (acres or hectares)

18.16 Acres
7.35 Hectares

- Building area (square feet or square metres).

5,915 sm
63, 671 sf

SCHOOL INFORMATION PROFILE

Name of School: Tecumseh Public School

Date: October 27, 2016

Page 2

- Number of portable classrooms.

0

- Number and type of instructional rooms as well as specialized classroom teaching spaces (e.g., science lab, tech shop, gymnasium, etc.).

First Floor:

- 10 classrooms
- Learning Commons
- LRC room
- Science Lab
- Double sized gym
- Alternative learning and life skills program (ALLP) room
- ALLP Snoezelen Sensory room

Second Floor:

- 10 classrooms
- LRC/Student Success room

- Area of hard surfaced outdoor play area and/or green space, the number of play fields, and the presence of outdoor facilities (e.g., tracks, courts for basketball, tennis, etc.).

Area of Hard Surface Play Area: 3,024.92 sm / 32,561 sf

Area of Green Space Play Area: 47,983.31 sm / 516,505 sf

- Naturalized area
- 3 long jump pits
- Small basketball court area
- 2 soccer fields
- Baseball diamond
- 1 Junior playground climber/equipment structure
- 1 Primary playground climber/equipment structure

There is a separate daycare building located on the site. The site also has tennis courts operated by the Municipality of Chatham-Kent and a trail with outdoor exercise equipment constructed in partnership with the Municipality of Chatham-Kent.

SCHOOL INFORMATION PROFILE

Name of School: Tecumseh Public School

Date: October 27, 2016

Page 3

- Ten-year history of major facility improvements (item and cost).

2005	Replace Exterior Doors	\$8,117
2005	Replace PA System	\$9,303
2013	FDK Renovation	\$164,611
2015	Elevator Addition	\$318,840
2016	Roof Replacement	\$592,090

- Projected five-year facility renewal needs of school (item and cost).

Tecumseh

	2016	2017	2018	2019	2020	Totals
Substructure	0	0	0	0	0	0
Shell	400,740	0	0	0	258,789	659,529
Interiors	78,449	0	0	0	861,319	939,768
Services	1,315,640	1,911,063	0	260,037	349,403	3,836,143
Equipment	0	0	0	0	0	0
Special Construction	0	0	0	0	0	0
Site Work	227,344	0	0	0	282,655	509,999
Totals	2,022,173	1,911,063	0	260,037	1,752,166	5,945,439

The data above was exported from VFA Facility on October 19, 2016. The format of VFA Facility is a database which is continually being reviewed and updated through regular system maintenance. On going construction and repairs in LKDSB buildings may change the data requirements within VFA Facility. Life cycles of building component data may change as the components are replaced/repared due to regular building maintenance.

- Current Facility Condition Index (FCI) with a definition of what the index represents.

5-Year: 58.9% \$6.8M to renovate and \$11.6M to replace.

10-Year: 67.71% \$7.9M to renovate and \$11.6M to replace.

- A measure of proximity of the students to their existing school, and the average distance to the school for students

Student Distance (KMs)		
Min	Max	Avg
0.18	26.96	2.65

SCHOOL INFORMATION PROFILE

Name of School: Tecumseh Public School

Date: October 27, 2016

Page 4

- Percentage of students that are and are not eligible for transportation under the school board policy, and the length of bus ride to the school (longest, shortest, and average length of bus ride times).

Eligibility (%)		Ride Time (Minutes)					
		AM			PM		
Bused	Not Bused	Min	Max	Avg	Min	Max	Avg
33.62%	66.38%	4	60	14.59	3	55	14.10

- School utility costs (totals, per square foot, and per student).

Attached (page 15).

- Number of parking spaces on site at the school, an assessment of the adequacy of parking, and bus/car access and egress.

74 parking spaces plus 3 accessible parking spaces.

Assessment of Adequacy of Parking:

With present student/population there is not enough adequate parking nor an effective entrance/exit route during busy time. This is an ongoing problem, which building services have attempted to rectify along with OPP. No solution has been found. Concern is with the additional traffic created if John N. Given consolidates with Tecumseh, the volume of traffic will increase, therefore so will safety for all students.

- Measures that the school board has identified and/or addressed for accessibility of the school for students, staff, and the public with disabilities (i.e., barrier-free).

A LULA (Limited Use/Limited Application) elevator and barrier free washroom was installed in 2015.

The ALLP classroom has an accessible door for wheelchairs.

- On-the-ground (OTG) capacity, and surplus/shortage of pupil places

On-the-ground (OTG) capacity: 557
 September 14, 2016 enrolment: 344
 Capacity utilization: 62%

Surplus pupil spaces: 213

SCHOOL INFORMATION PROFILE

Name of School: Tecumseh Public School

Date: October 27, 2016

Page 5

Instructional Profile

○ Describe the number and type of teaching staff, non-teaching staff, support staff, itinerant staff, and administrative staff at the school.

- FTE Teachers - 21.4
- Administrators - 1.5
- Secretary - 1
- Non-Teaching Support Staff (EA&ECE) - 12
- Custodians (1 - C1 & 2 - C2) - 3
- Itinerant Staff - 3

○ Describe the course and program offerings at the school.

- FDK-Gr. 8 (Regular)
- ALLP classroom (Alternative Learning & Life Skills)

○ Describe the specialized service offerings at the school (e.g., cooperative placements, guidance counseling, etc.).

None.

○ Current grade configuration of the school (e.g., junior kindergarten to Grade 6, junior kindergarten to Grade 12, etc.).

FDK-Gr. 8.

SCHOOL INFORMATION PROFILE

Name of School: Tecumseh Public School

Date: October 27, 2016

Page 6

○ Current grade organization of the school (e.g., number of combined grades, etc.).

- 3 FDK (2 with ECE 1 without)
- Gr. 1
- Gr. 1/2
- Gr. 2
- Gr. 2/3
- Gr. 3/4
- Gr. 4
- Gr. 4/5
- Gr. 5/6
- Gr.6
- Gr. 7/8
- Gr. 7/8
- Gr. 8
- ALLP

○ Number of out of area students.

11

○ Utilization factor/classroom usage.

Capacity Utilization: 62%

As of September 14, 2016 there have been 5 classrooms closed out of a total of 22 classrooms.

○ Summary of five previous years' enrolment and 10-year enrolment projection by grade and program.

Attached (page 16).

SCHOOL INFORMATION PROFILE

Name of School: Tecumseh Public School

Date: October 27, 2016

Page 7

○ Current extracurricular activities.

School Clubs

- Equity & Inclusion (Student Leadership)
- PBS Captains & Data Trackers (Student Leadership)
- Art Club
- Recess Reboot (Student Leadership)
- Intramurals
- Safe Food Handling Club (Student Leadership-trained by Health Unit)
- Knitting Club (at recess)
- Maker Monday Club (held for Gr. 7 & 8 Monday nights after school)
- Student Technology Team (Student Leadership)

School Athletics

- Basketball
- Soccer
- Cross Country
- Volleyball
- Track & Field
- Tennis (court on Tecumseh property)
- Curling (off site)

SCHOOL INFORMATION PROFILE

Name of School: Tecumseh Public School

Date: October 27, 2016

Page 8

Other School Use Profile

- Current non-school programs or services resident at or co-located with the school as well as any revenue from these non-school programs or services and whether or not it is at full cost recovery.

None.
- Current facility partnerships as well as any revenue from the facility partnerships and whether or not it is at full cost recovery.

Fitness Trail, Tennis Courts (partnership with Municipality of Chatham Kent).
- Community use of the school as well as any revenue from the community use of the school and whether or not it is at full cost recovery.

Attached (page 17).
- Availability of before and after school programs or services (e.g., child care) as well as any revenue from the before and after school programs and whether or not it is at full cost recovery.

Growing Together Day Care Before and After School program (2 shared rooms). As per the lease agreement, there is a \$750 annual fee. This is not full cost recovery.
- Lease terms at the school as well as any revenue from the lease and whether or not it is at full cost recovery.

None.
- Description of the school's suitability for facility partnerships.

There have been 5 closed classrooms that could be used for facility partnerships. No interest has been expressed.

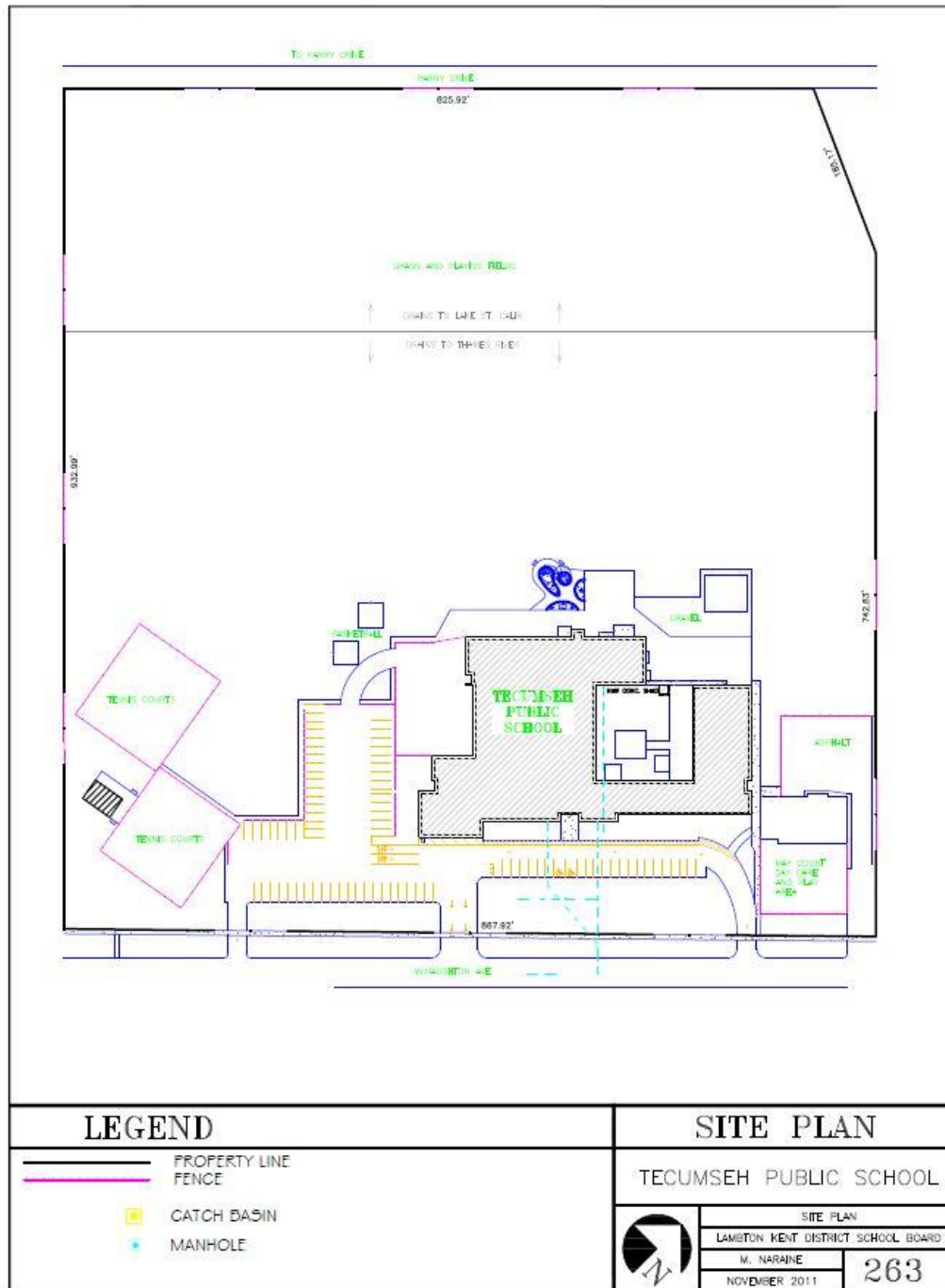
SCHOOL INFORMATION PROFILE

Name of School: Tecumseh Public School

Date: October 27, 2016

Page 9

Site Plan



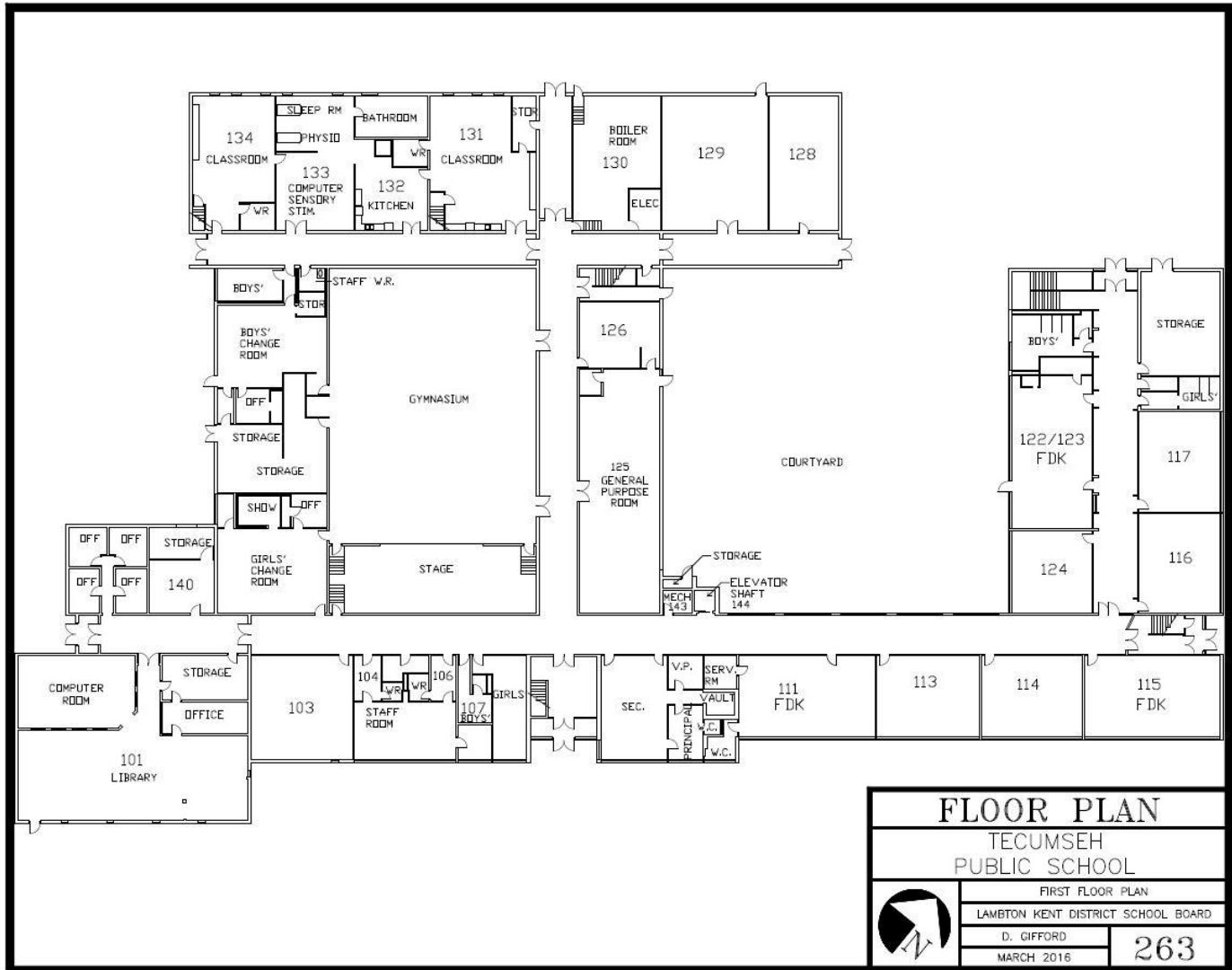
SCHOOL INFORMATION PROFILE

Name of School: Tecumseh Public School

Date: October 27, 2016

Page 10

First Floor Plan



FLOOR PLAN	
TECUMSEH PUBLIC SCHOOL	
FIRST FLOOR PLAN	
LAMBTON KENT DISTRICT SCHOOL BOARD	
D. GIFFORD	263
MARCH 2016	

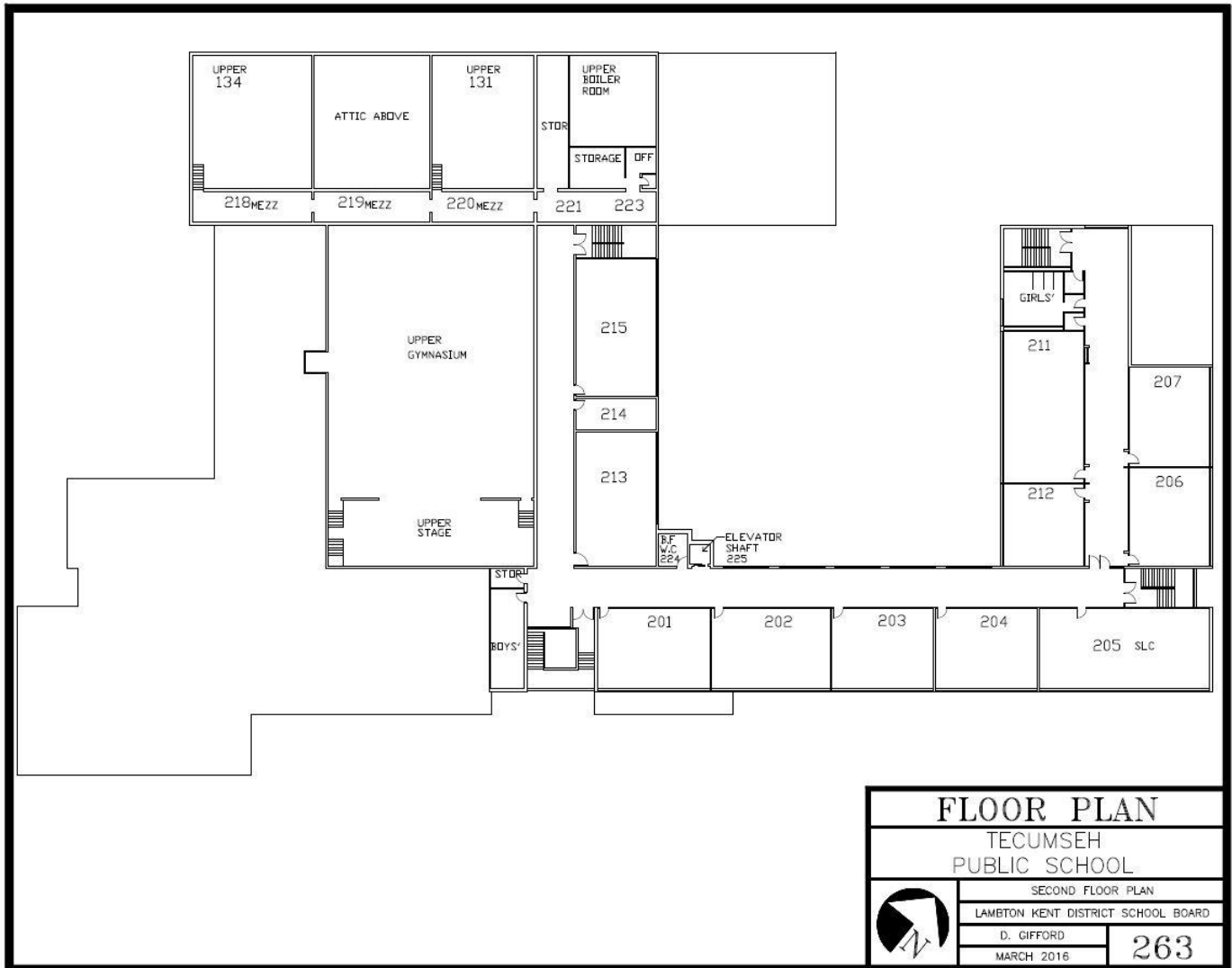
SCHOOL INFORMATION PROFILE

Name of School: Tecumseh Public School

Date: October 27, 2016

Page 11

Second Floor Plan



FLOOR PLAN	
TECUMSEH PUBLIC SCHOOL	
SECOND FLOOR PLAN	
LAMBTON KENT DISTRICT SCHOOL BOARD	
D. GIFFORD	263
MARCH 2016	

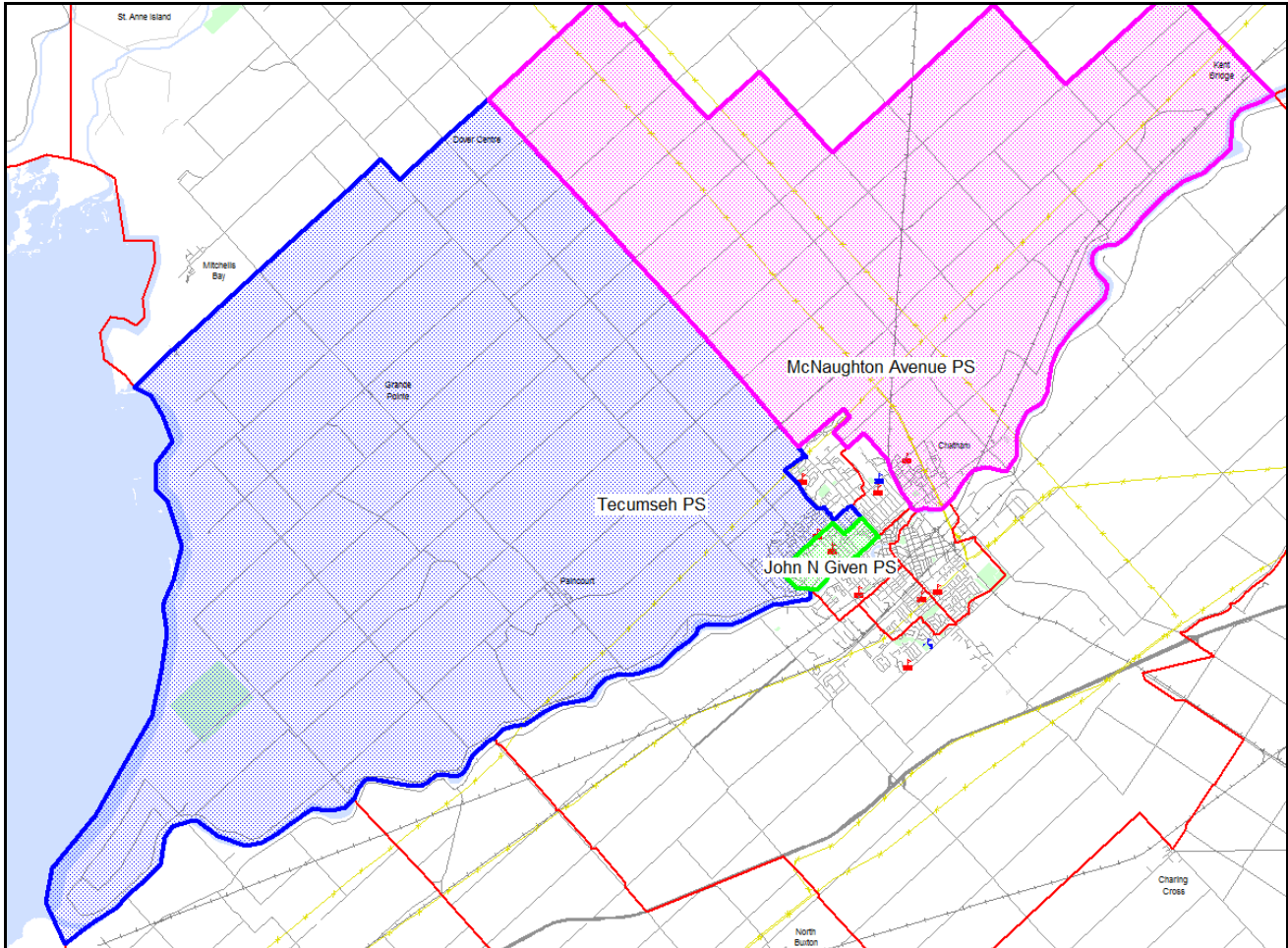
SCHOOL INFORMATION PROFILE

Name of School: Tecumseh Public School

Date: October 27, 2016

Page 12

Boundary Map



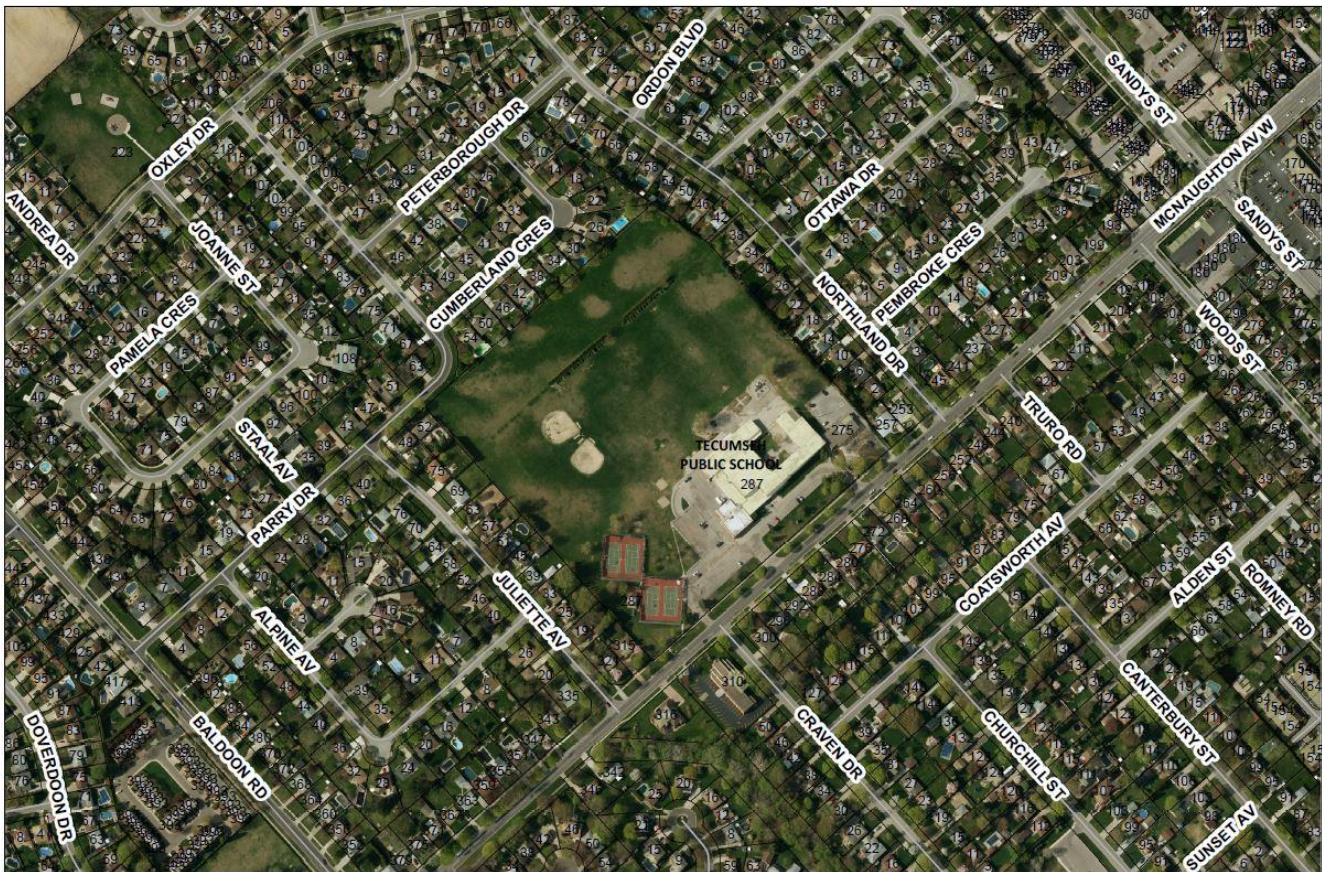
SCHOOL INFORMATION PROFILE

Name of School: *Tecumseh Public School*

Date: *October 27, 2016*

Page 13

Aerial Map



TECUMSEH PUBLIC SCHOOL, ZONE I

Chatham-Kent Mapping

Disclaimer: The Municipality of Chatham-Kent takes every precaution to put up-to-date and correct information on all maps published by Information Services. However, it does not expressly warrant that the information contained in the map is accurate on the date of publication. All users may use this information at their own risk. The Municipality of Chatham-Kent will not entertain any claims arising out of the use of this map or information. This map was produced by Information Services. If you have any questions or comments regarding the information displayed on this map, or you require more information please contact us at: ckgis@chatham-kent.ca. Protected by Copyright First Base Solutions May Not be Reproduced without Permission. This is not a plan of survey.



SCHOOL INFORMATION PROFILE

Name of School: *Tecumseh Public School*

Date: *October 27, 2016*

Page 14

Zoning Map



TECUMSEH PUBLIC SCHOOL, ZONE I

Chatham-Kent Zoning Bylaw

Disclaimer: The Municipality of Chatham-Kent takes every precaution to post up-to-date and correct information on all maps published by Information Services. However, it does not expressly warrant that the information contained in the map is accurate on the date of publication. All users may use this information at their own risk. The Municipality of Chatham-Kent will not undertake any claims arising out of the use of this map or information.
 This map was produced by Information Services. If you have any questions or comments regarding the information displayed on this map, or you require more information please contact us at info@chatham-kent.ca. Protected by Copyright First Base Solutions May Not Be Reproduced without Permission.
 This is not a plan of survey.



SCHOOL INFORMATION PROFILE

Name of School: Tecumseh Public School

Date: October 27, 2016

Page 15

Utility Costs

Month	Tecumseh		
	Hydro	Heat (Gas)	Water
September 2015	\$ 4,543.06	-\$ 58.36	\$ 757.50
October 2015	3,606.00	1,329.16	750.08
November 2015	3,993.64	2,750.49	814.20
December 2015	5,002.18	4,255.27	900.30
January 2016	4,129.90	4,649.68	690.54
February 2016	5,310.31	4,471.41	1,159.33
March 2016	3,220.70	3,576.93	792.47
April 2016	4,057.46	2,678.88	1,017.89
May 2016	4,180.56	1,439.82	1,097.45
June 2016	4,593.51	175.34	936.12
July 2016	2,807.42	257.04	491.91
August 2016	3,110.95	- 543.04	487.49
Totals:	\$ 48,555.69	\$ 24,982.62	\$ 9,895.28
Per Square Metre:			
5915	\$ 8.21	\$ 4.22	\$ 1.67
Per Student:			
344	\$ 141.15	\$ 72.62	\$ 28.77

SCHOOL INFORMATION PROFILE

Name of School: *Tecumseh Public School*

Date: *October 27, 2016*

Page 16

Enrolment History and Projections

Tecumseh Public School

5 Year Enrolment History

Grade	2011	2012	2013	2014	2015
JK	33	38	41	30	26
K	31	40	43	43	30
1	37	35	37	35	33
2	35	43	30	35	35
3	32	34	39	33	33
4	45	35	25	40	33
5	42	49	36	29	42
6	36	47	49	42	26
7	36	45	47	44	44
8	38	38	46	45	42
ALLP	2	6	7	7	6
Total	367	410	400	383	350

Current Enrolment – September 14, 2016

Year	JK	K	1	2	3	4	5	6	7	8	ALLP	Total
2016	34	29	30	34	27	42	31	36	29	47	5	344


10 Year Enrolment Projections

Grade	2017	2018	2019	2020	2021	2022	2023	2024	2025	2026
JK	21	24	24	24	24	24	24	24	24	24
K	38	28	33	32	32	32	32	32	32	32
1	32	33	25	29	28	28	28	28	28	28
2	25	32	33	24	28	27	28	28	28	28
3	32	25	31	33	24	28	27	28	28	28
4	34	32	24	31	33	24	28	27	27	27
5	33	34	32	24	31	33	24	28	27	27
6	34	34	35	32	25	32	33	25	28	28
7	43	34	34	35	32	25	32	33	25	28
8	25	43	34	33	35	32	25	32	33	25
ALLP	6	6	6	6	6	6	6	6	6	6
Total	323	325	311	303	298	291	287	291	286	281

SCHOOL INFORMATION PROFILE

Name of School: *Tecumseh Public School*
 Date: *October 27, 2016*
 Page 17

Community Use of Schools



CLASS

SHARED SCHOOL SERVICES

STUDENT TRANSPORTATION
 CHILD CARE
 ENERGY & ENVIRONMENTAL
 COMMUNITY USE OF SCHOOLS

LKDSB COMMUNITY USE OF SCHOOLS REPORT
for Tecumseh Public School

The tables below contain 2015-16 data from the CLASS school rental booking software.

PROJECTED SEPTEMBER 2015-JUNE 2016 SCHOOL RENTAL PERMITTED HOURS	
Classroom	0
Gymnasium – Double	440
Library	0
Community Room	148
TOTAL PERMITTED HOURS	588

PROJECTED SEPTEMBER 2015-JUNE 2016 SCHOOL RENTAL REVENUE	
Paid by rental groups	\$80
Covered by the CUS grant	\$7,577
TOTAL REVENUE	\$7,657

COMMUNITY USE OVERVIEW

Five community groups utilized the school on a weekly basis:

Monday nights – 5:30pm-7:30pm youth volleyball, 7:30pm-10pm adult volleyball
 Tuesday nights – 5:30pm-9:30pm Scouting meetings
 Wednesday nights - 5:30pm-7:30pm youth basketball, 7:30pm-9:30pm youth volleyball
 Thursday nights – 5:30pm-7:30pm youth basketball, 7:30pm-10pm adult volleyball

One community group rented the school for one day for their Alumni reunion.

600 GILLARD STREET, WALLACEBURG ON N8A 4L3