

SCHOOL INFORMATION PROFILE

Name of School: McNaughton Avenue Public School

Date: October 27, 2016

Page 1

Facility Profile

- Site plan and floor plan(s) (or space template) of the school with the date of school construction and any subsequent additions.

Site Plan and Floor Plan are attached (pages 9-10).

Year of Construction	Type of Construction	Area (square meters)
1967	Original Building	3,444
1992	Addition	251
2007	Addition	1,615
2014	Addition	444
Total Building Area		5,754 (61,933 sf)

- School attendance area (boundary) map

Map is attached (page 11).

- Context map (or air photo) of the school indicating the existing land uses surrounding the school.

Map is attached (page 12).

- Planning map of the school with zoning, Official Plan or secondary plan land use designations.

Map is attached (page 13).

Legal Description: 476 McNaughton Ave. East; REG COMP PLAN 779 LOT 5
Chatham-Kent Municipality

- Size of the school site (acres or hectares)

20 Acres
8.09 Hectares

- Building area (square feet or square metres).

5,754 sm
61,933 sf

SCHOOL INFORMATION PROFILE

Name of School: McNaughton Avenue Public School

Date: October 27, 2016

Page 2

- Number of portable classrooms.

0

- Number and type of instructional rooms as well as specialized classroom teaching spaces (e.g., science lab, tech shop, gymnasium, etc.).

30 classrooms and
 - a double gymnasium
 - a Learning Commons

- Area of hard surfaced outdoor play area and/or green space, the number of play fields, and the presence of outdoor facilities (e.g., tracks, courts for basketball, tennis, etc.).

Area of Hard Surface Play Area: 3,433.21 sm / 36,956 sf
 Area of Green Space Play Area: 45,326.28 sm / 487,904 sf

- 6 basketball standards
- 1 regulation-sized soccer pitch
- 3 smaller soccer pitches
- 2 baseball diamonds
- 2 outdoor playground equipment units
- FDK fenced play area with playground equipment unit
- 3 small gardens

- Ten-year history of major facility improvements (item and cost).

2005	Replace Fire Alarm System	\$56,417
2006	Boiler Replacement & Partial Roof Replacement	\$393,178
2006	Gym and Classroom Addition / Library Renovation	\$3,200,000
2013	Access Control & CCTV	\$60,893
2014	FDK Addition	\$1,199,308

SCHOOL INFORMATION PROFILE

Name of School: McNaughton Avenue Public School

Date: October 27, 2016

Page 3

- Projected five-year facility renewal needs of school (item and cost).
Specific Site and Facility Features and Potential Capital Work

McNaughton

	2016	2017	2018	2019	2020	Totals
Substructure	10,816	0	0	0	0	10,816
Shell	1,121,296	0	0	0	212,379	1,333,675
Interiors	882,938	75,989	26,170	23,657	685,773	1,694,527
Services	2,151,291	31,716	0	0	0	2,183,007
Equipment	0	0	0	0	0	0
Special Construction	0	0	0	0	0	0
Site Work	821,957	0		0	151,389	973,346
Totals	4,988,298	107,705	26,170	23,657	1,049,541	6,195,371

The data above was exported from VFA Facility on October 19, 2016. The format of VFA Facility is a database which is continually being reviewed and updated through regular system maintenance. On going construction and repairs in LKDSB buildings may change the data requirements within VFA Facility. Life cycles of building component data may change as the components are replaced/repared due to regular building maintenance.

- Current Facility Condition Index (FCI) with a definition of what the index represents.

5-Year: 41.27% \$6.4M to renovate and \$15.6M to replace
10-Year: 44.59% \$6.9M to renovate and \$15.6M to replace

- A measure of proximity of the students to their existing school, and the average distance to the school for students.

Student Distance (KMs)		
Min	Max	Avg
0.25	26.2	3.82

SCHOOL INFORMATION PROFILE

Name of School: McNaughton Avenue Public School

Date: October 27, 2016

Page 4

- Percentage of students that are and are not eligible for transportation under the school board policy, and the length of bus ride to the school (longest, shortest, and average length of bus ride times).

Eligibility (%)		Ride Time (Minutes)					
		AM			PM		
Bused	Not Bused	Min	Max	Avg	Min	Max	Avg
68.28%	31.72%	4	54	21.24	3	40	16.56

- School utility costs (totals, per square foot, and per student).

Attached (page 14).

- Number of parking spaces on site at the school, an assessment of the adequacy of parking, and bus/car access and egress.

- 67 regular parking spaces
- 2 accessible
- 24 additional spots located at the Board Office

- Measures that the school board has identified and/or addressed for accessibility of the school for students, staff, and the public with disabilities (i.e., barrier-free).

All areas are barrier-free.

- On-the-ground (OTG) capacity, and surplus/shortage of pupil places

On-the-ground (OTG) capacity: 757
 September 14, 2016 enrolment: 697
 Capacity utilization: 92%

Surplus pupil spaces: 60

SCHOOL INFORMATION PROFILE

Name of School: McNaughton Avenue Public School

Date: October 27, 2016

Page 5

Instructional Profile

- Describe the number and type of teaching staff, non-teaching staff, support staff, itinerant staff, and administrative staff at the school.
 - FTE teachers - 37.7
 - Administrators - 2
 - Secretary – 1
 - Elementary clerk - 1
 - Non-teaching support staff (EA & ECE) - 8
 - Custodians - 5
- Describe the course and program offerings at the school.
 - JK-Grade 8 English Language Program
 - JK-Grade 6 French immersion Program
- Describe the specialized service offerings at the school (e.g., cooperative placements, guidance counseling, etc.).
 - JK-Grade 6 French Immersion Program
- Current grade configuration of the school (e.g., junior kindergarten to Grade 6, junior kindergarten to Grade 12, etc.).
 - JK-Grade 8 English Language Program
 - JK-Grade 6 French Immersion Program

SCHOOL INFORMATION PROFILE

Name of School: McNaughton Avenue Public School

Date: October 27, 2016

Page 6

- o Current grade organization of the school (e.g., number of combined grades, etc.).

English (Regular)

- 1 – FDK
- 1 – Gr 1
- 1 – Gr 1/2
- 1 – Gr 2
- 1 – Gr 3
- 1 – Gr 3/4
- 1 – Gr 4/5
- 1 – Gr 5
- 1 – Gr 6
- 3 – Gr 7/8

French Immersion

- 5 – FDK
- 3 – Gr 1
- 1 – Gr 1/2
- 2 – Gr 2
- 3 – Gr 3
- 1 – Gr 4
- 1 – Gr 4/5
- 1 – Gr 5
- 1 – Gr 6

- o Number of out of area students.

10 (as of October 26, 2016).

- o Utilization factor/classroom usage.

Capacity utilization: 92%
0 classrooms closed.

- o Summary of five previous years' enrolment and 10-year enrolment projection by grade and program.

Attached (page 15).

SCHOOL INFORMATION PROFILE

Name of School: McNaughton Avenue Public School

Date: October 27, 2016

Page 7

o Current extracurricular activities.

School Clubs

- Classroom Monitors
- Dance Club
- Drama Production
- Egoals (Student Congress)
- Environmental Club
- Equity and Inclusion
- Intramurals
- Learning Commons Clubs
- Math Club
- Milk Program
- Safety Patrollers
- Yearbook

School Athletics

- Basketball
- Cross Country
- Soccer
- Track and Field
- Volleyball

School Events

- Carnival
- Christmas Assembly
- English Book Fair
- Education Week
- FCC Food Drive
- French Book Fair
- Goodfellows
- Grade 8 Graduation
- Gr 7/8 school dances
- JK-Grade 8 classroom field trips
- Orange Day
- Play Day
- Talent Show
- Terry Fox Run/Walk
- Remembrance Day Assembly

SCHOOL INFORMATION PROFILE

Name of School: McNaughton Avenue Public School

Date: October 27, 2016

Page 8

Other School Use Profile

- Current non-school programs or services resident at or co-located with the school as well as any revenue from these non-school programs or services and whether or not it is at full cost recovery.

None.

- Current facility partnerships as well as any revenue from the facility partnerships and whether or not it is at full cost recovery.

None.

- Community use of the school as well as any revenue from the community use of the school and whether or not it is at full cost recovery.

Attached (page 16).

- Availability of before and after school programs or services (e.g., child care) as well as any revenue from the before and after school programs and whether or not it is at full cost recovery.

YMCA Before and After School program (2 shared rooms). As per the lease agreement, there is a \$750 annual fee. This is not full cost recovery.

- Lease terms at the school as well as any revenue from the lease and whether or not it is at full cost recovery.

None

- Description of the school's suitability for facility partnerships.

There are no available classrooms for facility partnerships.

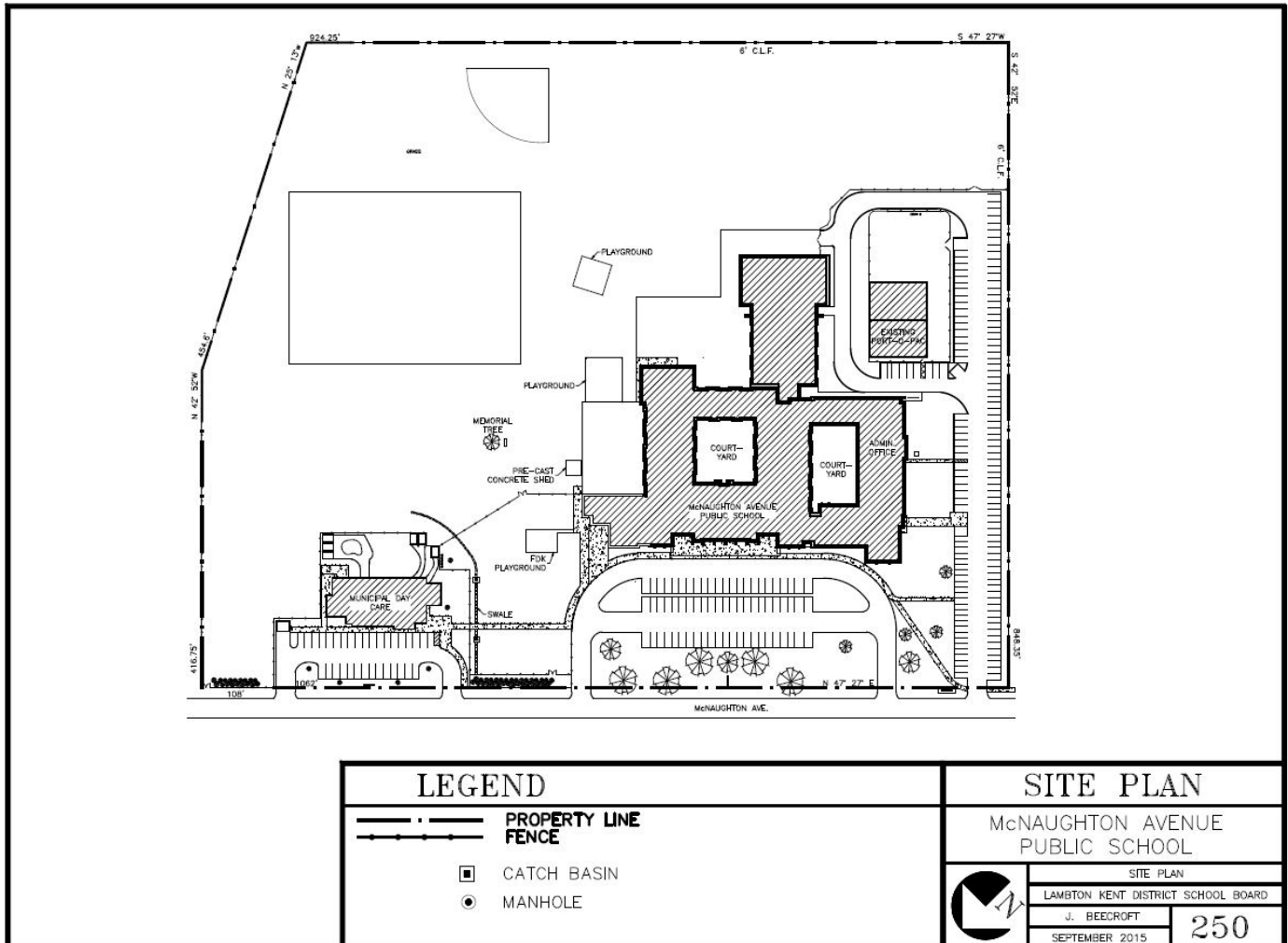
SCHOOL INFORMATION PROFILE

Name of School: *McNaughton Avenue Public School*

Date: *October 27, 2016*

Page 9

Site Plan



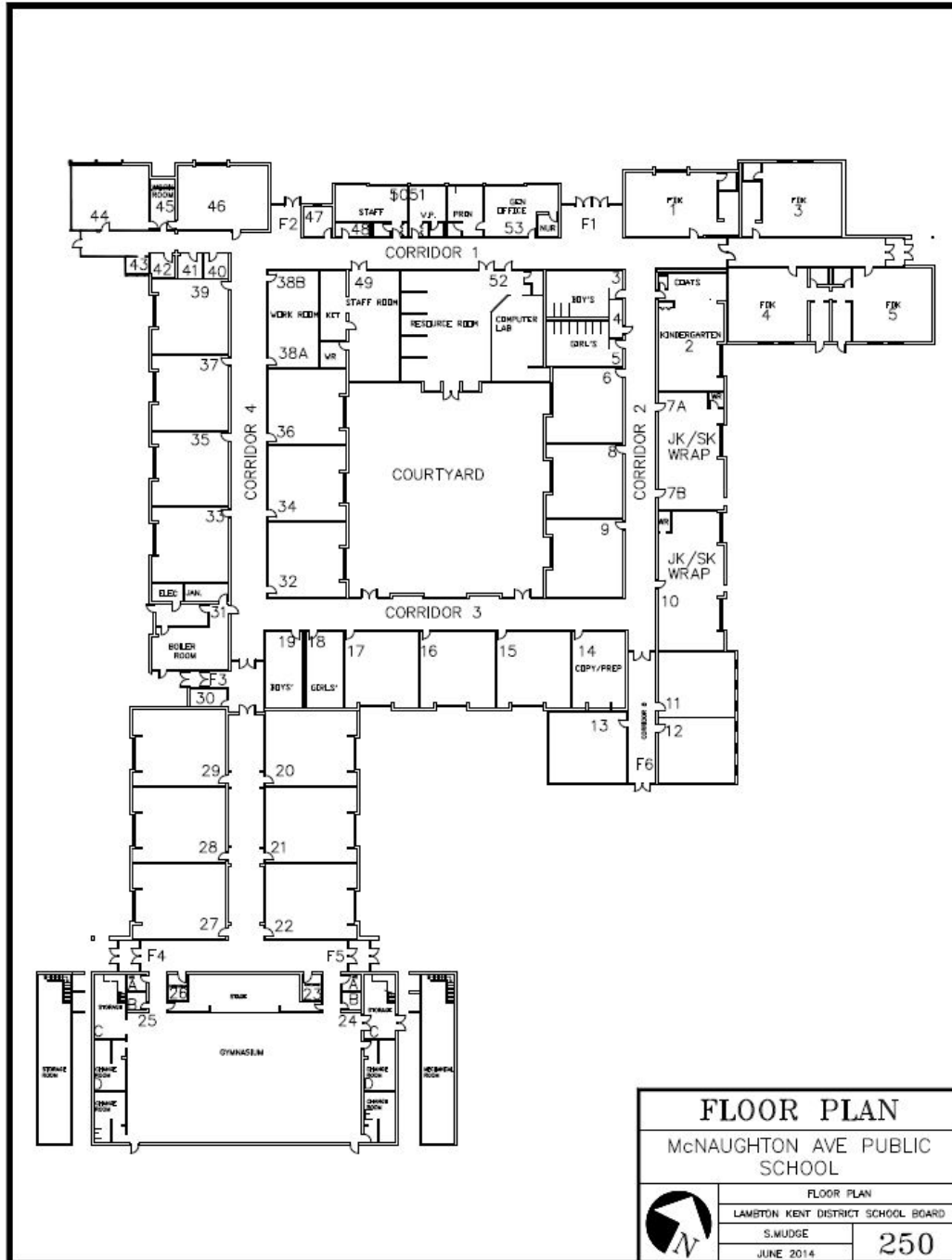
SCHOOL INFORMATION PROFILE

Name of School: McNaughton Avenue Public School

Date: October 27, 2016

Page 10

Floor Plan



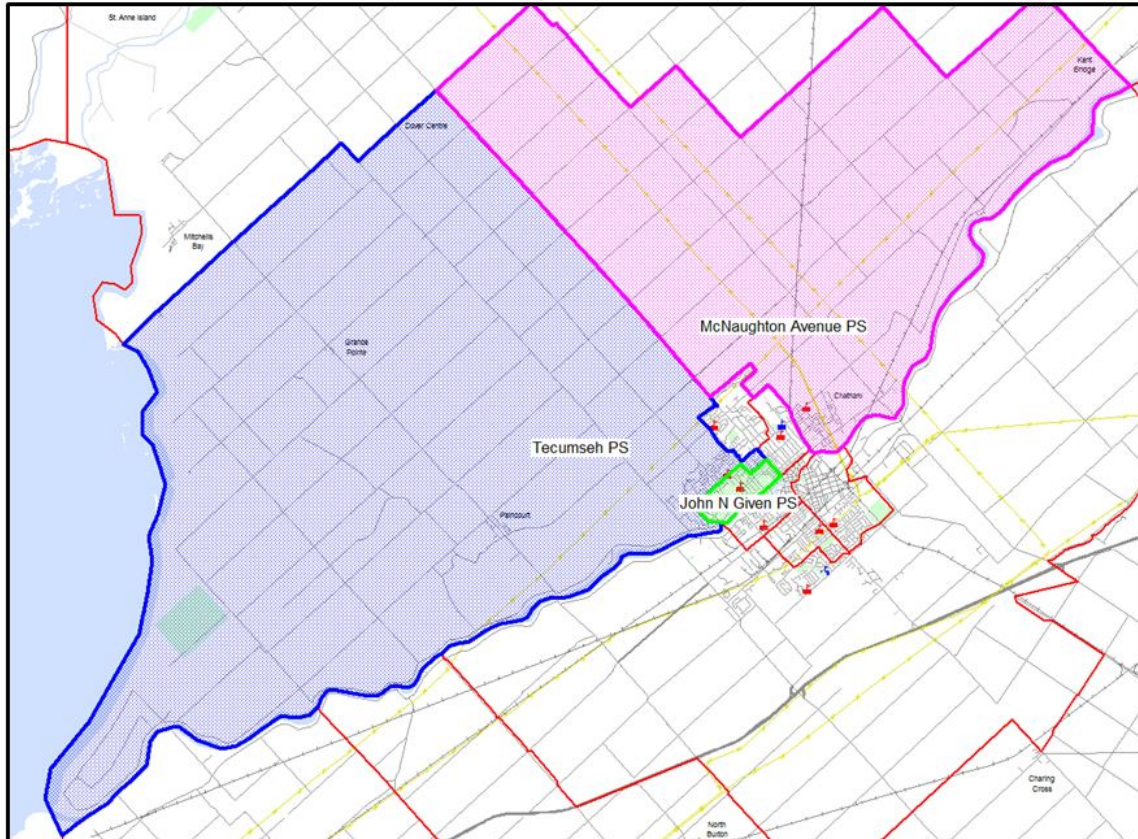
SCHOOL INFORMATION PROFILE

Name of School: *McNaughton Avenue Public School*

Date: *October 27, 2016*

Page 11

Boundary Map



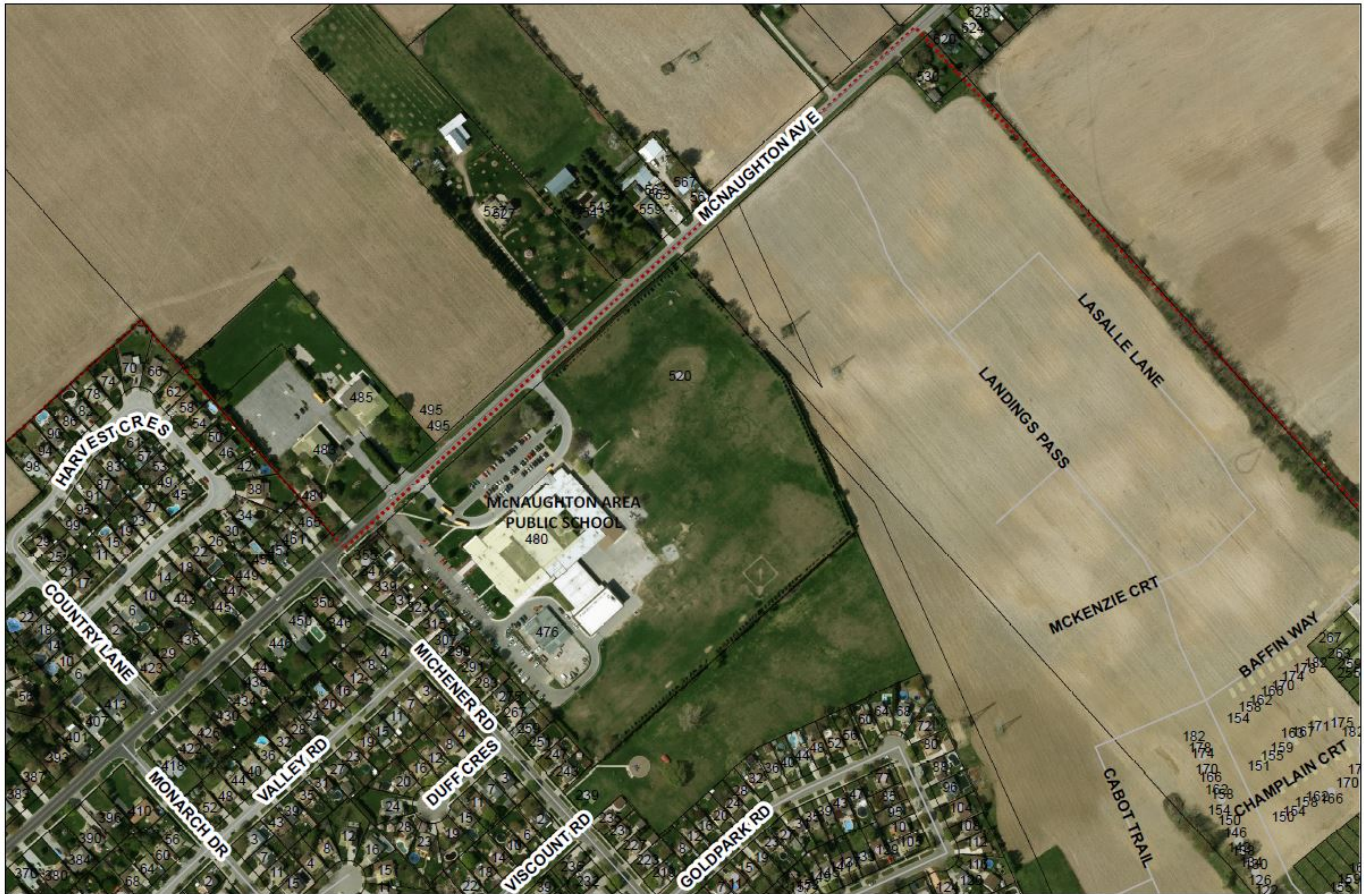
SCHOOL INFORMATION PROFILE

Name of School: *McNaughton Avenue Public School*

Date: *October 27, 2016*

Page 12

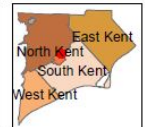
Aerial Map



MCNAUGHTON AREA PUBLIC SCHOOL, ZONE I

Chatham-Kent Mapping

Disclaimer: The Municipality of Chatham-Kent takes every precaution to put up-to-date and correct information on all maps published by Information Services. However, it does not expressly warranty that the information contained in the map is accurate on the date of publication. All users may use this information at their own risk. The Municipality of Chatham-Kent will not entertain any claims arising out of the use of this map or information. This map was produced by Information Services. If you have any questions or comments regarding the information displayed on this map, or you require more information please contact us at: cdg@chatham-kent.ca. Protected by Copyright First Base Solutions May Not be Reproduced without Permission. This is not a plan of survey.



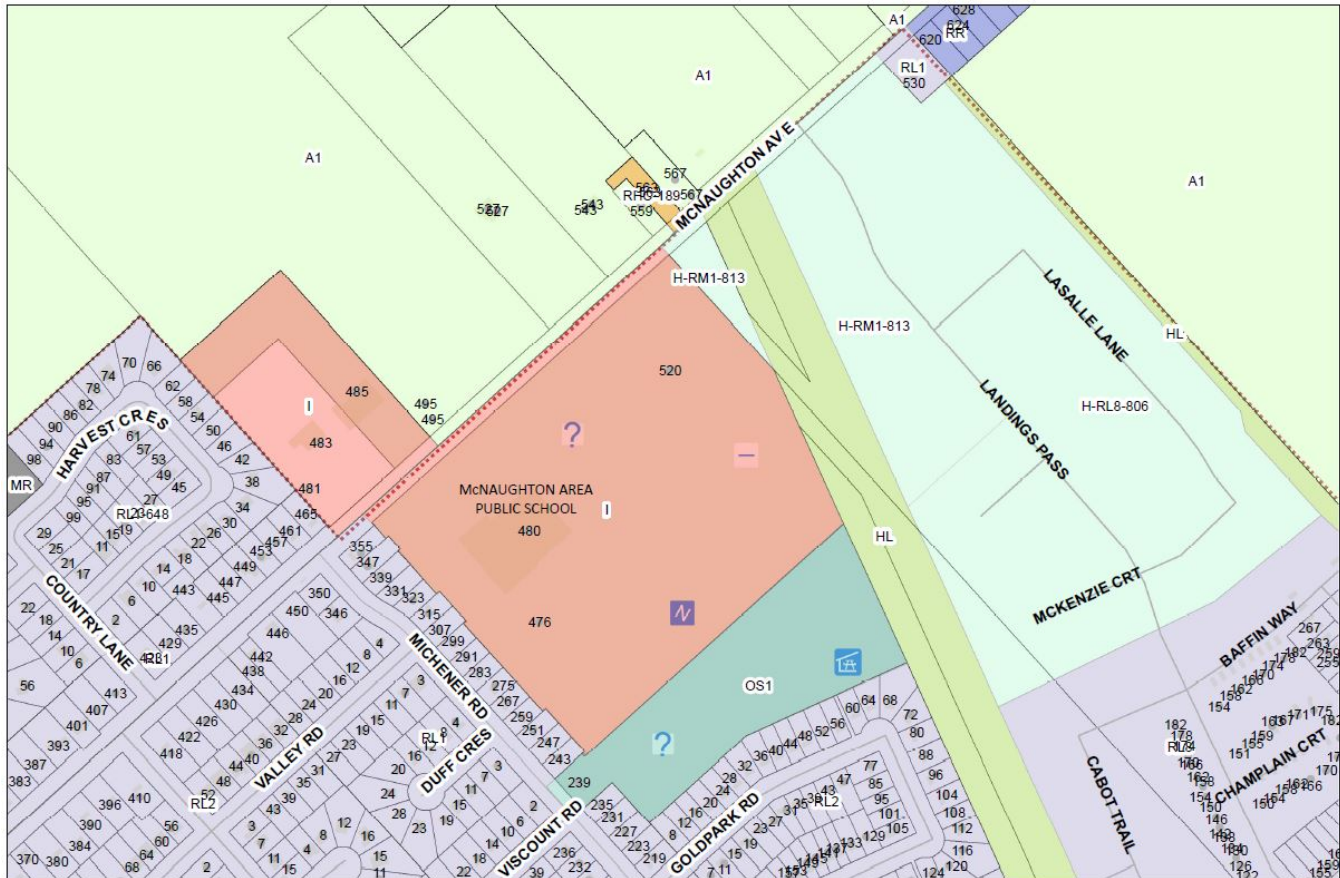
SCHOOL INFORMATION PROFILE

Name of School: McNaughton Avenue Public School

Date: October 27, 2016

Page 13

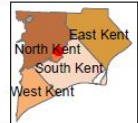
Zoning Map



MCNAUGHTON AREA PUBLIC SCHOOL, ZONE I

Chatham-Kent Zoning Bylaw

Disclaimer: The Municipality of Chatham-Kent takes every precaution to put up-to-date and correct information on all maps published by Information Services. However, it does not expressly warrant that the information contained in the map is accurate on the date of publication. All users may use this information at their own risk. The Municipality of Chatham-Kent will not entertain any claims arising out of the use of this map or information.
 This map was produced by Information Services. If you have any questions or comments regarding the information displayed on this map, or you require more information please contact us at atokig@chatham-kent.ca. Protected by Copyright First Base Solutions May Not be Reproduced without Permission.
 This is not a plan of survey.



SCHOOL INFORMATION PROFILE

Name of School: McNaughton Avenue Public School

Date: October 27, 2016

Page 14

Utility Costs

Month	McNaughton		
	Hydro	Heat (Gas)	Water
September 2015	\$ 6,833.93	\$ 147.37	\$ 1,230.00
October 2015	5,441.88	279.84	1,230.00
November 2015	6,019.92	1,152.37	1,335.00
December 2015	7,260.37	1,933.38	1,230.00
January 2016	7,442.63	2,899.86	979.08
February 2016	8,797.20	3,731.94	1,528.40
March 2016	5,956.25	3,506.82	1,130.60
April 2016	7,298.09	2,879.02	1,373.70
May 2016	6,981.93	1,330.84	1,594.70
June 2016	7,098.76	458.37	1,517.35
July 2016	5,377.75	194.08	909.60
August 2016	5,916.35	152.40	998.00
Totals:	\$ 80,425.06	\$ 18,666.29	\$ 15,056.43
Per Square Metre:			
5754	\$ 13.98	\$ 3.24	\$ 2.62
Per Student:			
697	\$ 115.39	\$ 26.78	\$ 21.60

SCHOOL INFORMATION PROFILE

Name of School: McNaughton Avenue Public School

Date: October 27, 2016

Page 15

Enrolment History and Projections

McNaughton Avenue Public School

5 Year Enrolment History

Grade	2011	2012	2013	2014	2015
JK	73	86	84	93	78
K	82	79	86	82	92
1	63	84	75	84	85
2	67	63	78	68	86
3	73	69	63	73	68
4	48	74	68	60	69
5	69	46	72	65	58
6	54	66	46	72	64
7	45	38	36	24	39
8	56	42	39	38	21
Total	630	647	647	659	660

Current Enrolment – September 14, 2016

Year	JK	K	1	2	3	4	5	6	7	8	Total
2016	76	86	91	83	85	67	73	62	32	42	697

10 Year Enrolment Projections

Grade	2017	2018	2019	2020	2021	2022	2023	2024	2025	2026
JK	77	77	76	76	76	75	74	74	74	74
K	77	75	74	74	74	73	73	72	71	71
1	76	76	75	74	73	73	72	72	71	70
2	89	73	73	72	71	70	70	69	69	69
3	79	85	70	70	69	68	67	67	66	66
4	78	75	81	66	66	66	65	64	64	63
5	66	78	76	82	66	66	66	66	65	64
6	69	65	76	75	81	65	65	65	64	63
7	26	35	32	25	30	34	22	22	23	23
8	37	28	36	34	26	32	36	24	23	25
Total	674	667	669	648	632	622	610	595	590	588


SCHOOL INFORMATION PROFILE

Name of School: McNaughton Avenue Public School

Date: October 27, 2016

Page 16

Community Use of Schools



CLASS
SHARED SCHOOL SERVICES

STUDENT TRANSPORTATION
CHILD CARE
ENERGY & ENVIRONMENTAL
COMMUNITY USE OF SCHOOLS

**LKDSB COMMUNITY USE OF SCHOOLS REPORT
for McNaughton Public School**

The tables below contain 2015-16 data from the CLASS school rental booking software.

PROJECTED SEPTEMBER 2015-JUNE 2016 SCHOOL RENTAL PERMITTED HOURS	
Classroom	248
Gymnasium – Double	462
Library	250
TOTAL PERMITTED HOURS	960

PROJECTED SEPTEMBER 2015-JUNE 2016 SCHOOL RENTAL REVENUE	
Paid by rental groups	\$110
Covered by the CUS grant	\$10,492
TOTAL REVENUE	\$10,602

COMMUNITY USE OVERVIEW
Seven community groups utilized the school on a weekly basis:

- Monday nights – 5:30pm-7:30pm youth basketball
- Tuesday nights – 5:30pm-7:30pm youth basketball, 7:30pm-9:30pm adult basketball
- Wednesday nights - 5:30pm-7:30pm youth basketball
- Thursday nights – 5:30pm-7:30pm youth basketball, 7:30pm-10pm adult volleyball

Two community groups ran their week long youth summer basketball camps and the Learning Disabilities Association ran their summer program all July & August.

600 GILLARD STREET, WALLACEBURG ON N8A 4L3