

SCHOOL INFORMATION PROFILE

Name of School: John N. Given Public School

Date: October 27, 2016

Page 1

Facility Profile

- Site plan and floor plan(s) (or space template) of the school with the date of school construction and any subsequent additions.

Site Plan and Floor Plans are attached (pages 9-10).

Year of Construction	Type of Construction	Area (square meters)
1955	Original Building	825
1956	Addition	358
1961	Addition	326
1966	Addition	1,034
2014	Addition – FDK Classrooms	59
Total Building Area		2,602 (28,005 sf)

- School attendance area (boundary) map

Map is attached (page 11).

- Context map (or air photo) of the school indicating the existing land uses surrounding the school.

Map is attached (page 12).

- Planning map of the school with zoning, Official Plan or secondary plan land use designations.

Map is attached (page 13).

Legal Description: 92 Churchill Street; PLAN 518 BLK B
Chatham-Kent Municipality

- Size of the school site (acres or hectares)

6.15 Acres
2.49 Hectares

- Building area (square feet or square metres).

28,005 sf
2,602 sm

SCHOOL INFORMATION PROFILE

Name of School: *John N. Given Public School*

Date: *October 27, 2016*

Page 2

- Number of portable classrooms.

0

- Number and type of instructional rooms as well as specialized classroom teaching spaces (e.g., science lab, tech shop, gymnasium, etc.).

15 classrooms including:

- 2 fitted for FDK
- 1 bookroom
- 1 Learning Commons
- 1 Resource Room/Calming Room

- Gymnasium with stage

- Area of hard surfaced outdoor play area and/or green space, the number of play fields, and the presence of outdoor facilities (e.g., tracks, courts for basketball, tennis, etc.).

Area of Hard Surface Play Area: 1,786.84 sm / 19,234 sf

Area of Green Space Play Area: 16,680.48 sm / 179,553 sf

Main Playing Field:

- 2 soccer posts with elementary soccer field
- 1 baseball cage
- 3 long jump/triple jump pits
- 5 tetherball poles
- 1 set of poles for outdoor volleyball
- 1 primary playground equipment
- 1 junior playground equipment
- 3 basketball nets

- FDK fenced-in playground with asphalt and grass by FDK classrooms

- Ten-year history of major facility improvements (item and cost).

2005	Paved Parking Lot	\$77,853
2006	Replace Ventilation Fans and Control Wiring	\$228,647
2010	Roof Replacement	\$263,222
2014	Office Addition, FDK Renovation, PA Replacement	\$641,411

SCHOOL INFORMATION PROFILE

Name of School: John N. Given Public School

Date: October 27, 2016

Page 3

- Projected five-year facility renewal needs of school (item and cost).

John N Given

	2016	2017	2018	2019	2020	Totals
Substructure	10,816	0	0	0	0	10,816
Shell	184,288	0	0	0	21,840	206,128
Interiors	652,321	0	7,856	0	675,167	1,335,344
Services	1,392,177	68,187	76,608	0	0	1,536,972
Equipment	0	0	0	0	0	0
Special Construction	0	0	0	0	0	0
Site Work	659,555	0	0	0	199,396	858,951
Totals	2,899,157	68,187	84,464	0	896,403	3,948,211

The data above was exported from VFA Facility on October 19, 2016. The format of VFA Facility is a database which is continually being reviewed and updated through regular system maintenance. On going construction and repairs in LKDSB buildings may change the data requirements within VFA Facility. Life cycles of building component data may change as the components are replaced/repared due to regular building maintenance.

- Current Facility Condition Index (FCI) with a definition of what the index represents.

5-Year: 51.61% \$3.95M to renovate and \$7.65M to replace
 10-Year: 58.38% \$4.47M to renovate and \$7.65M to replace

- A measure of proximity of the students to their existing school, and the average distance to the school for students.

Student Distance (KMs)		
Min	Max	Avg
0.03	28.04	1.98

English: Currently distance between schools is 600 m (according to CLASS). There will be very few additional students from John N. Given Public School who will become eligible for busing to Tecumseh Public School. CLASS believes that all students can be accommodated on existing Tecumseh Public School routes with minor routing changes.

French: Currently the French Immersion bus routes servicing McNaughton Avenue Public School are also shared with John N. Given Public School. CLASS is confident that the impacts resulting from the French Immersion consolidation at McNaughton Avenue Public School can be accommodated on existing buses with little or no change.

SCHOOL INFORMATION PROFILE

Name of School: John N. Given Public School

Date: October 27, 2016

Page 4

- Percentage of students that are and are not eligible for transportation under the school board policy, and the length of bus ride to the school (longest, shortest, and average length of bus ride times).

Eligibility (%)		Ride Time (Minutes)					
		AM			PM		
Bused	Not Bused	Min	Max	Avg	Min	Max	Avg
26.38%	73.62%	5	45	16.25	3	59	28.69

- School utility costs (totals, per square foot, and per student).

Attached (page 14).

- Number of parking spaces on site at the school, an assessment of the adequacy of parking, and bus/car access and egress.

- 48 regular parking spaces plus 2 accessible parking spaces
- Bus lane

- Measures that the school board has identified and/or addressed for accessibility of the school for students, staff, and the public with disabilities (i.e., barrier-free).

All areas of the building are barrier free. The only automatic door is the front external door. Two parking spaces are accessible at the front of the school.

- On-the-ground (OTG) capacity, and surplus/shortage of pupil places

On-the-ground (OTG) capacity: 351
 September 14, 2016 enrolment: 249
 (includes 62 in French Immersion Program)
 Capacity utilization: 71%
 Surplus pupil spaces: 102

SCHOOL INFORMATION PROFILE

Name of School: *John N. Given Public School*

Date: *October 27, 2016*

Page 5

Instructional Profile

- Describe the number and type of teaching staff, non-teaching staff, support staff, itinerant staff, and administrative staff at the school.

John N. Given Staff:

- FTE teachers (11 homeroom, 1 Resource, 3 Rotary) – 14.4 FTE
- Non-Teaching Support Staff (EA & ECE) - 2
- Secretary – 1
- Principal - 1
- Custodians - (1 Day, 1 Afternoon, 1 Shared C3) - 3

- Describe the course and program offerings at the school.

- JK-Grade 8 English Language Program
- Grade 7,8 French Immersion Program

- Describe the specialized service offerings at the school (e.g., cooperative placements, guidance counseling, etc.).

None.

- Current grade configuration of the school (e.g., junior kindergarten to Grade 6, junior kindergarten to Grade 12, etc.).

- JK-Grade 8 English
- Grade 7 and 8 French Immersion

SCHOOL INFORMATION PROFILE

Name of School: John N. Given Public School

Date: October 27, 2016

Page 6

○ Current grade organization of the school (e.g., number of combined grades, etc.).

- 2 FDK
- Grade 1/2
- Grade 2/3
- Grade 3/4
- Grade 4/5
- Grade 5/6
- Grade 7
- Grade 8
- Grade 7 French Immersion
- Grade 8 French Immersion

○ Number of out of area students.

0

○ Utilization factor/classroom usage.

Capacity Utilization: 71%
2 classrooms have been closed.

○ Summary of five previous years' enrolment and 10-year enrolment projection by grade and program.

Enrolment history and projections are attached (page 15).

○ Current extracurricular activities.

School Clubs

- Student Social Committee
- Dance
- Yearbook
- Chess
- Library Helpers
- Recycling
- Snack Program
- Reboot Recess
- Safety Patrollers

SCHOOL INFORMATION PROFILE

Name of School: John N. Given Public School

Date: October 27, 2016

Page 7

School Athletics

- Basketball
- Cross-Country
- Soccer
- Track and Field
- Volleyball

School Events

- Intermediate ski trip to Boler Mountain
- Grade 8 students to Muskoka
- Class trips throughout the year
- Math Gauss competition
- Terry Fox Run
- Play Day
- School Dances
- Theme days
- French Cultural Day/Week (Bonhomme Carnaval, Mardi Gras)
- Awards Day and Graduation
- Monthly Celebration of Character Traits

SCHOOL INFORMATION PROFILE

Name of School: *John N. Given Public School*

Date: *October 27, 2016*

Page 8

Other School Use Profile

- Current non-school programs or services resident at or co-located with the school as well as any revenue from these non-school programs or services and whether or not it is at full cost recovery.

None.
- Current facility partnerships as well as any revenue from the facility partnerships and whether or not it is at full cost recovery.

None.
- Community use of the school as well as any revenue from the community use of the school and whether or not it is at full cost recovery.

Attached (page 16).
- Availability of before and after school programs or services (e.g., child care) as well as any revenue from the before and after school programs and whether or not it is at full cost recovery.

YMCA Before and After School program (1 shared room). As per the lease agreement, there is a \$500 annual fee. This is not full cost recovery.
- Lease terms at the school as well as any revenue from the lease and whether or not it is at full cost recovery.

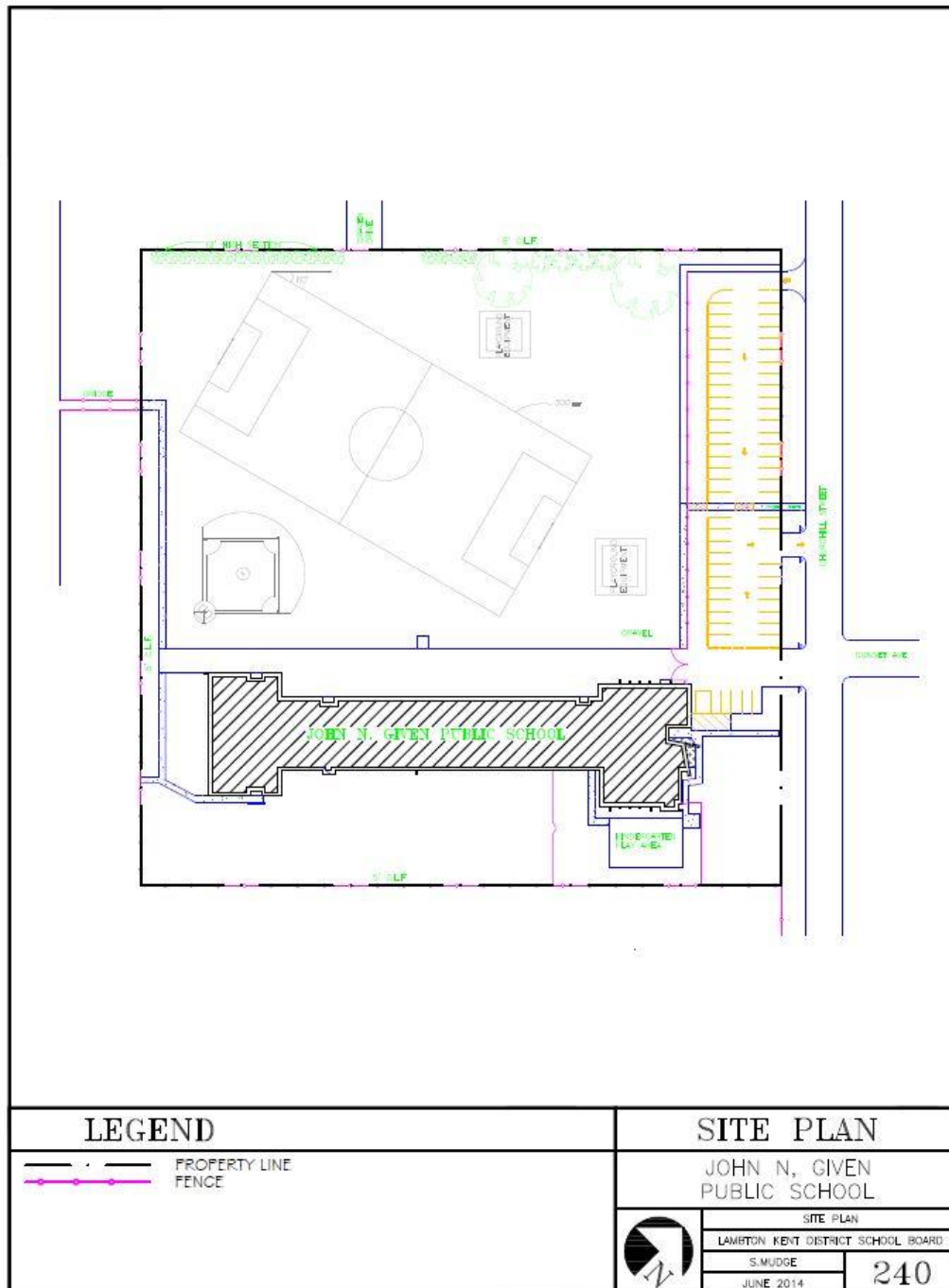
None.
- Description of the school's suitability for facility partnerships.

There are two closed classrooms that could be used for facility partnerships. No interest has been expressed.

SCHOOL INFORMATION PROFILE

Name of School: *John N. Given Public School*
 Date: *October 27, 2016*
 Page 9

Site Plan



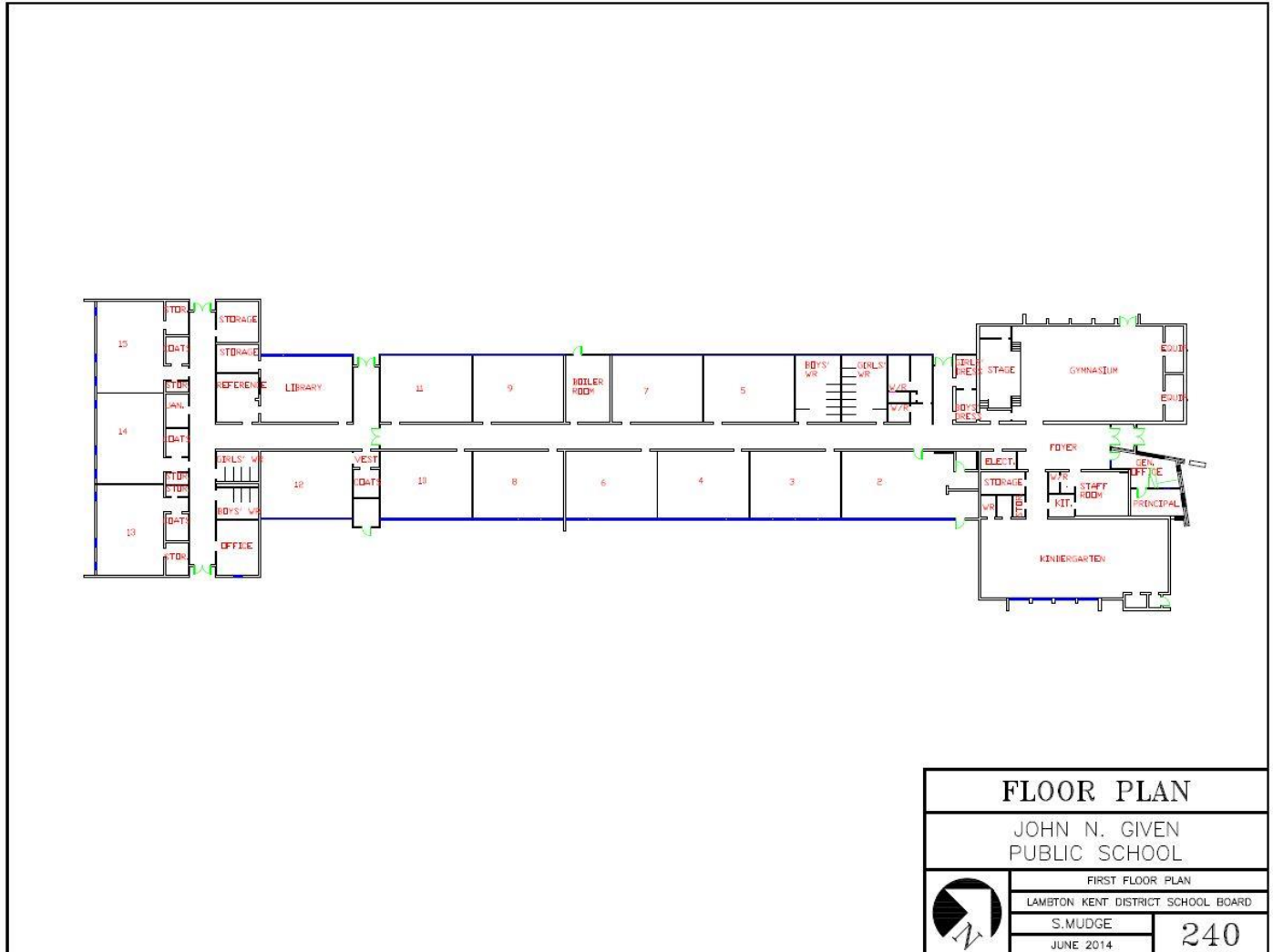
SCHOOL INFORMATION PROFILE

Name of School: John N. Given Public School

Date: October 27, 2016

Page 10

Floor Plan



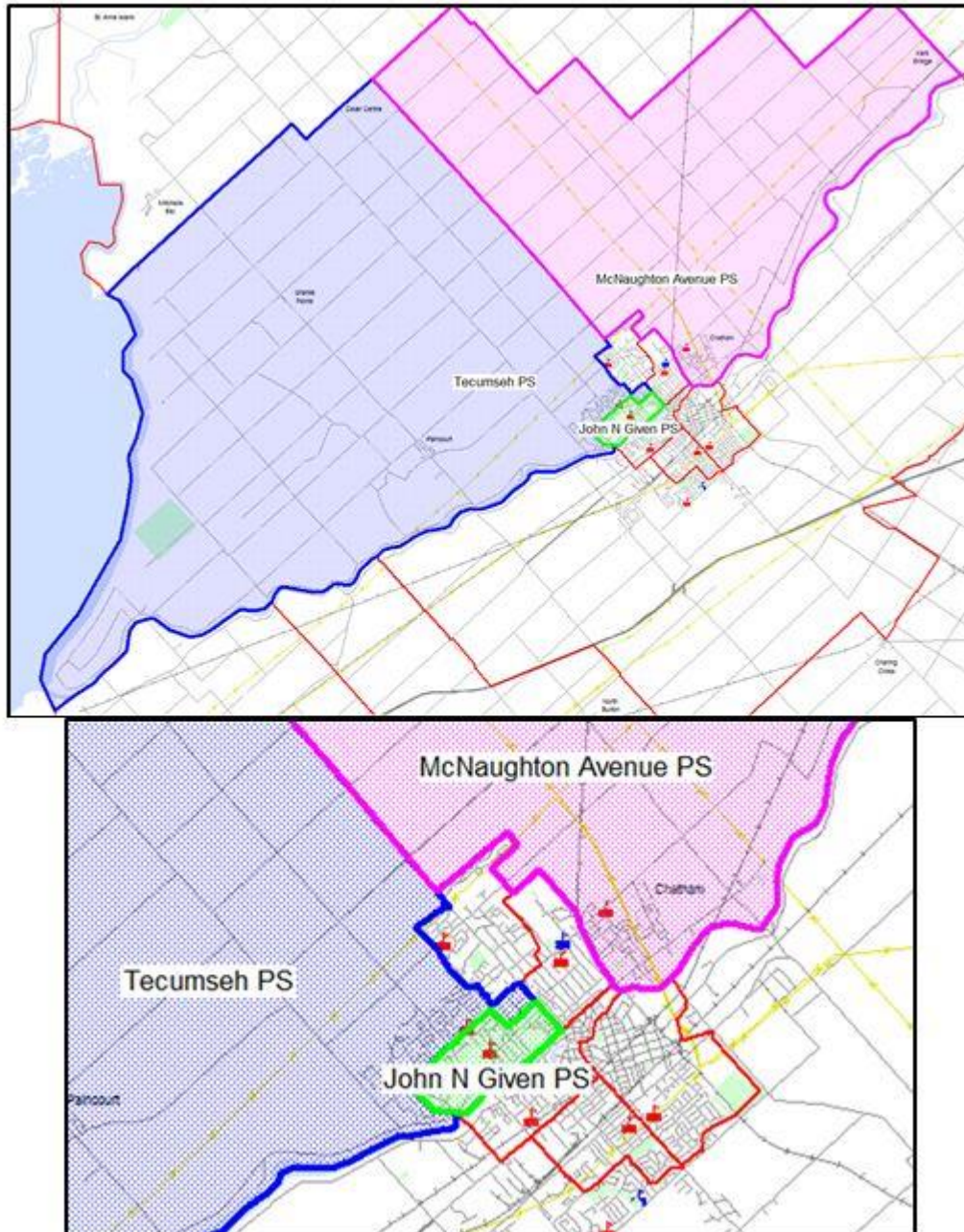
SCHOOL INFORMATION PROFILE

Name of School: John N. Given Public School

Date: October 27, 2016

Page 11

Boundary Map



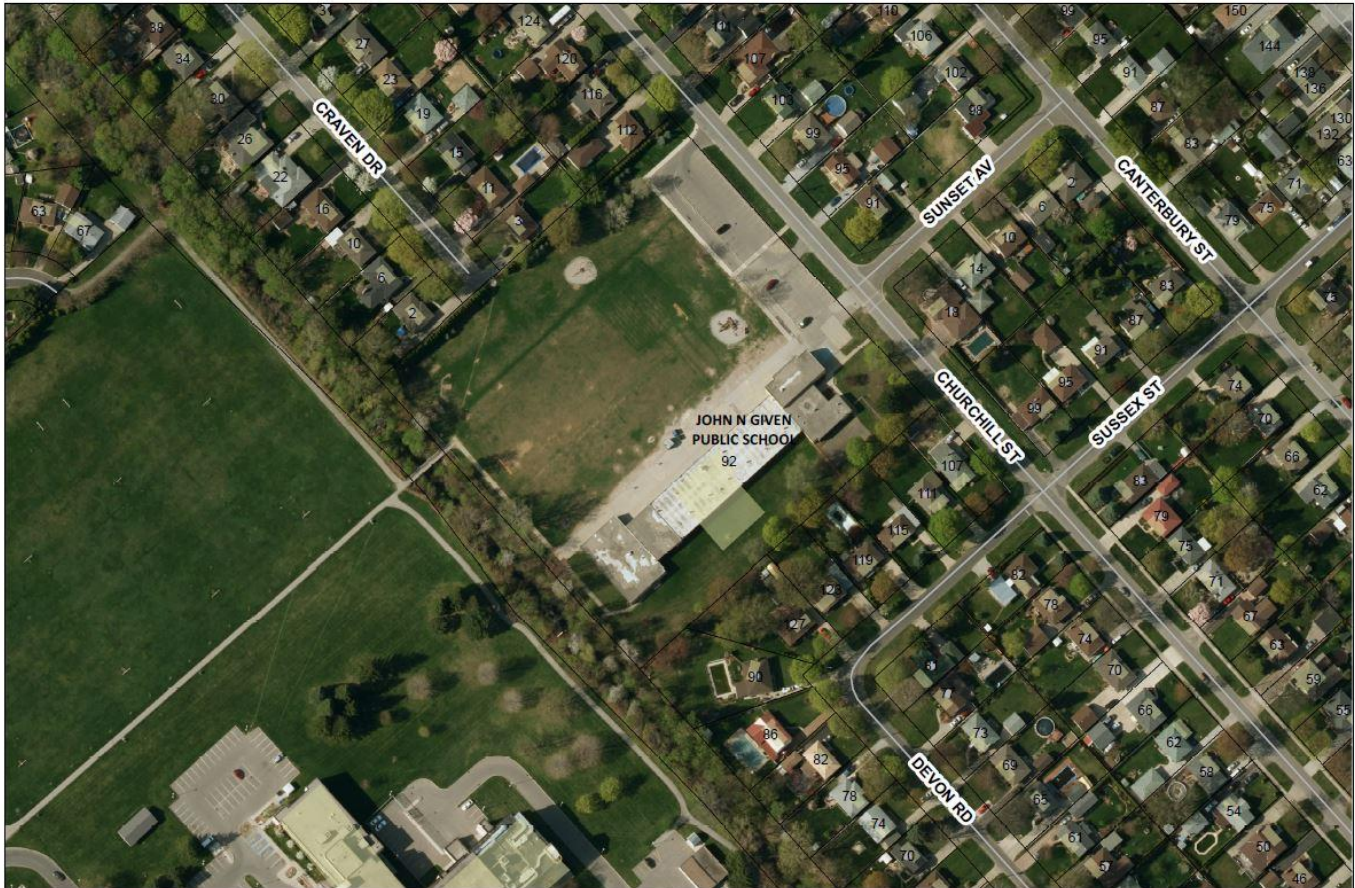
SCHOOL INFORMATION PROFILE

Name of School: John N. Given Public School

Date: October 27, 2016

Page 12

Aerial Map



JOHN GIVEN PUBLIC SCHOOL, ZONE I

Chatham-Kent Mapping

Disclaimer: The Municipality of Chatham-Kent takes every precaution to put up-to-date and correct information on all maps published by Information Services. However, it does not expressly warranty that the information contained in the map is accurate on the date of publication. All users may use this information at their own risk. The Municipality of Chatham-Kent will not entertain any claims arising out of the use of this map or information. This map was produced by Information Services. If you have any questions or comments regarding the information displayed on this map, or you require more information please contact us at: cdgls@chatham-kent.ca. Protected by Copyright First Base Solutions May Not be Reproduced without Permission. This is not a plan of survey.



SCHOOL INFORMATION PROFILE

Name of School: John N. Given Public School

Date: October 27, 2016

Page 13

Zoning Map



JOHN GIVEN PUBLIC SCHOOL, ZONE I

Chatham-Kent Zoning Bylaw

Disclaimer: The Municipality of Chatham-Kent takes every precaution to put up-to-date and correct information on all maps published by Information Services. However, it does not expressly warrant that the information contained in the map is accurate on the date of publication. All users may use this information at their own risk. The Municipality of Chatham-Kent will not entertain any claims arising out of the use of this map or information.
 This map was produced by Information Services. If you have any questions or comments regarding the information displayed on this map, or you require more information please contact us at okgis@chatham-kent.ca. Protected by Copyright First Base Solutions May Not be Reproduced without Permission.
 This is not a plan of survey.



SCHOOL INFORMATION PROFILE

Name of School: John N. Given Public School

Date: October 27, 2016

Page 14

Utility Costs

Month	John N. Given		
	Hydro	Heat (Gas)	Water
September 2015	\$ 991.87	\$ 28.04	\$ 1,041.90
October 2015	1,090.35	206.02	1,167.90
November 2015	1,126.32	636.77	943.20
December 2015	1,021.99	1,148.04	666.00
January 2016	1,257.17	1,624.80	469.50
February 2016	1,557.26	1,441.75	938.27
March 2016	1,194.98	1,179.12	511.74
April 2016	1,411.37	765.84	602.35
May 2016	1,350.54	416.15	757.05
June 2016	1,203.51	32.51	695.17
July 2016	677.46	25.03	602.45
August 2016	539.37	22.88	- 29.71
Totals:	\$ 13,422.19	\$ 7,526.95	\$ 8,365.82
Per Square Metre:			
2602	\$ 5.16	\$ 2.89	\$ 3.22
Per Student:			
249	\$ 53.90	\$ 30.23	\$ 33.60

SCHOOL INFORMATION PROFILE

Name of School: *John N. Given Public School*

Date: *October 27, 2016*

Page 15

Enrolment History and Projections

John N. Given Public School

5 Year Enrolment History

Grade	2011	2012	2013	2014	2015
JK	24	24	17	14	15
K	25	23	21	20	15
1	20	25	20	21	22
2	22	17	25	19	19
3	24	25	16	25	21
4	28	25	25	18	24
5	16	25	28	20	19
6	14	17	27	22	23
7	50	34	43	47	55
8	49	48	36	43	48
Total	272	263	258	249	261

Current Enrolment – September 14, 2016

Year	JK	K	1	2	3	4	5	6	7	8	Total
2016	16	19	11	22	21	20	20	17	51	52	249

10 Year Enrolment Projections

Grade	2017	2018	2019	2020	2021	2022	2023	2024	2025	2026
JK	19	14	15	15	15	15	15	15	15	15
K	18	22	17	18	18	18	18	18	18	18
1	17	18	22	17	18	18	18	18	18	18
2	16	17	18	22	17	18	18	18	18	18
3	23	17	18	19	22	17	19	19	19	19
4	21	24	17	19	20	23	18	19	19	19
5	22	20	23	17	18	20	23	18	19	19
6	23	22	20	23	17	18	19	22	18	19
7	45	54	50	66	62	60	58	58	59	55
8	50	47	55	51	68	63	60	57	60	60
Total	254	255	255	267	275	270	266	262	263	260


SCHOOL INFORMATION PROFILE

Name of School: John N. Given Public School

Date: October 27, 2016

Page 16

Community Use of Schools



CLASS

SHARED SCHOOL SERVICES

STUDENT TRANSPORTATION
 CHILD CARE
 ENERGY & ENVIRONMENTAL
 COMMUNITY USE OF SCHOOLS

LKDSB COMMUNITY USE OF SCHOOLS REPORT
 for John N Given Public School

The tables below contain 2015-16 data from the CLASS school rental booking software.

SEPTEMBER 2015-JUNE 2016 SCHOOL RENTAL PERMITTED HOURS	
Classroom	0
Gymnasium – Single	0
Library	0
TOTAL PERMITTED HOURS	0

SEPTEMBER 2015-JUNE 2016 SCHOOL RENTAL REVENUE	
Paid by rental groups	0
Covered by the CUS grant	0
TOTAL REVENUE	0

COMMUNITY USE OVERVIEW:
 Our office received 1 rental request for John N Given throughout the 2015-16 school year. The YMCA applied for use of the gym for one evening for their adult volleyball program however the gym was too small for adult competitive volleyball so the YMCA used another school gym.

600 GILLARD STREET, WALLACEBURG ON N8A 4L3