

EVERY VOICE COUNTS

School Climate Survey Grade 4-6 Healthy Living Results

The Lambton Kent District School Board conducted a School Climate Survey April 1-12, 2021 to gather input from students in Grades 4-12, parents/guardians and staff to help with planning programs and decision-making related to supporting safe and inclusive school environments. The following is an overview of the results for Grades 4-6. Contact your school for more detailed information.

SOUTH PLYMPTON-WYOMING PUBLIC SCHOOL

BOARD DATA

54%

Eat breakfast
everyday



32%

Spend at
least 1 hour
a day doing
physical
activity



59%

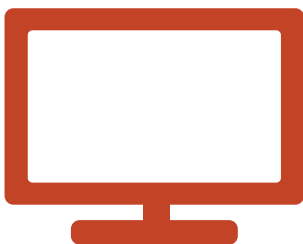
Eat breakfast
everyday

38%

Spend at least 1 hour
a day doing physical
activity

55%

Spend 3 hours or more of
screen time outside of school
on school days



66%

Get 7 hours or
more of sleep on a
school night



46%

Spent 3 hours or
more of screen time
outside of school on
school days

75%

Get 7 hours or more
of sleep on a school
night