



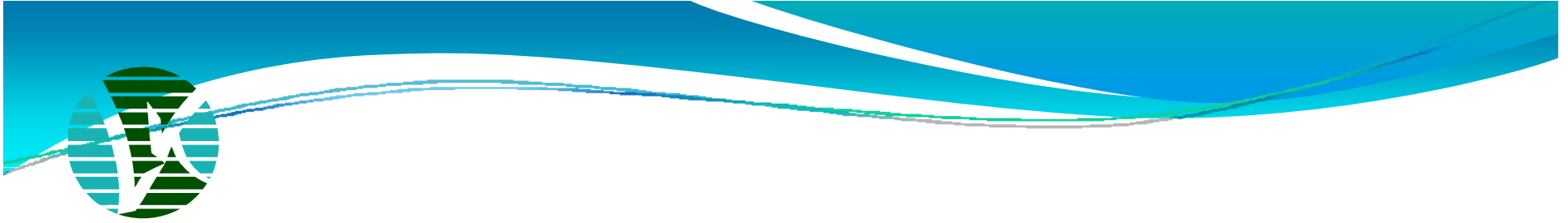
Lambton Kent
District School Board
Student Achievement ✓ *Community Success*

Petrolia Family of Schools Pupil Accommodation Review

November 12, 2009



Welcome and Introduction of Members



Board Policy P-AD-106-09

“It is the policy of the Lambton Kent District School Board to operate and maintain its schools as effectively and efficiently as possible to support student achievement while exploring all opportunities to enhance the learning environment.”



Establishment of Accommodation Review Committee (ARC)

The Accommodation Review Committee (ARC) membership includes the following from each school:

- a parent**
- a school administrator**
- a community representative**
- a municipal partner representative**
- a First Nations representative if appropriate**
- the Board's Planning and Reporting Officer**

The Director or designated Superintendent facilitates and chairs ARC meetings. Trustees will attend as observers.

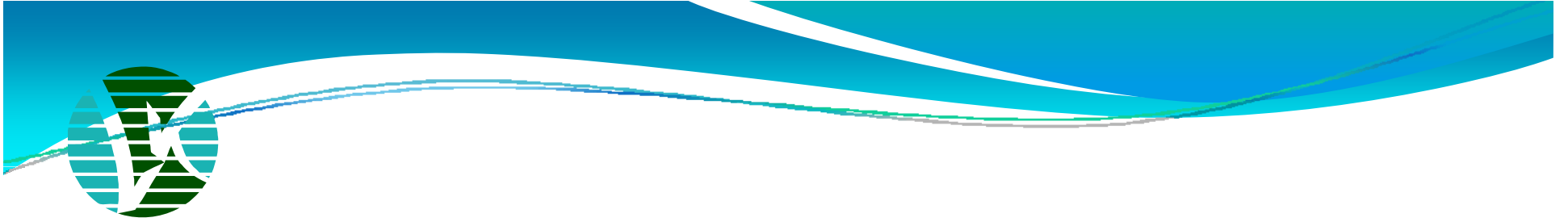


Role of the Accommodation Review Committee

The Accommodation Review Committee (ARC) analyzes School Information Profiles, considers alternatives and makes recommendations that meet the educational and accommodation objectives of the Lambton Kent District School Board. Throughout the process the ARC consults with community members and provides opportunity for input into the analysis.



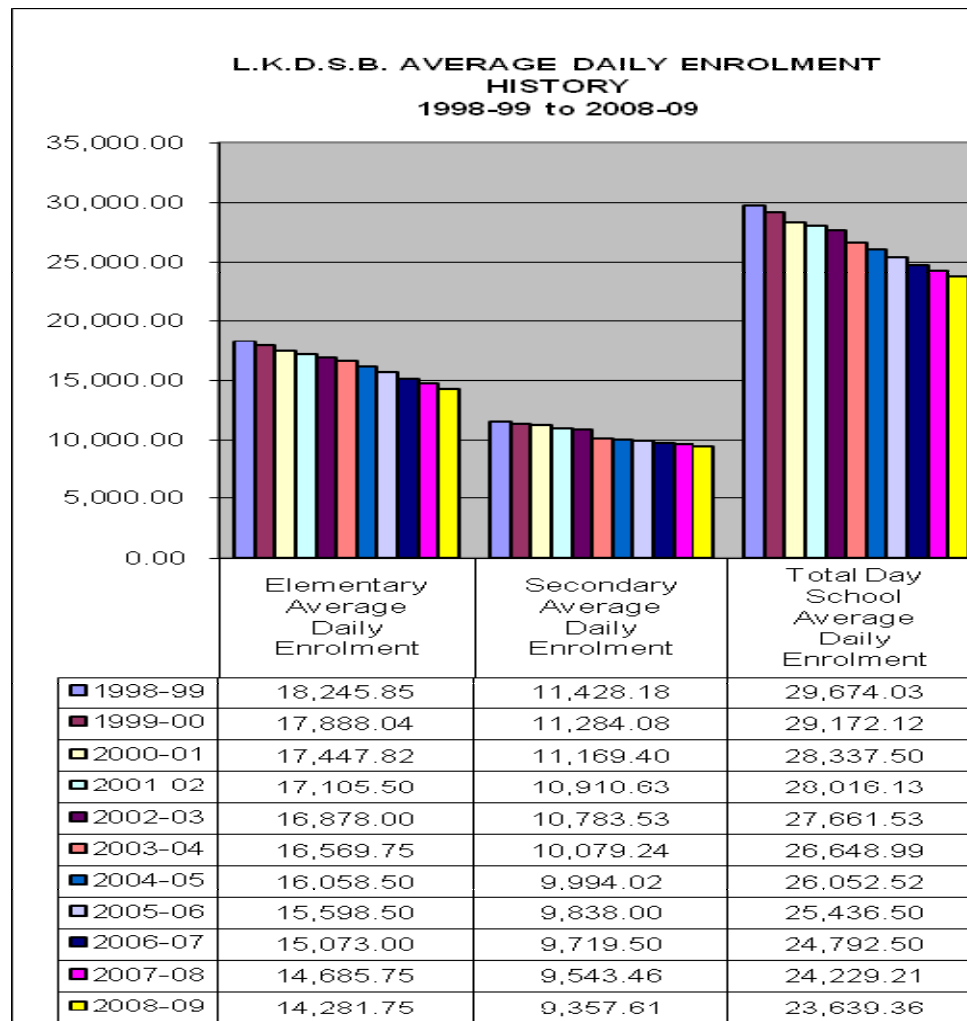
School Information Profiles



**DEMOGRAPHIC
TRENDS OF THE
LAMBTON KENT
DISTRICT SCHOOL
BOARD**



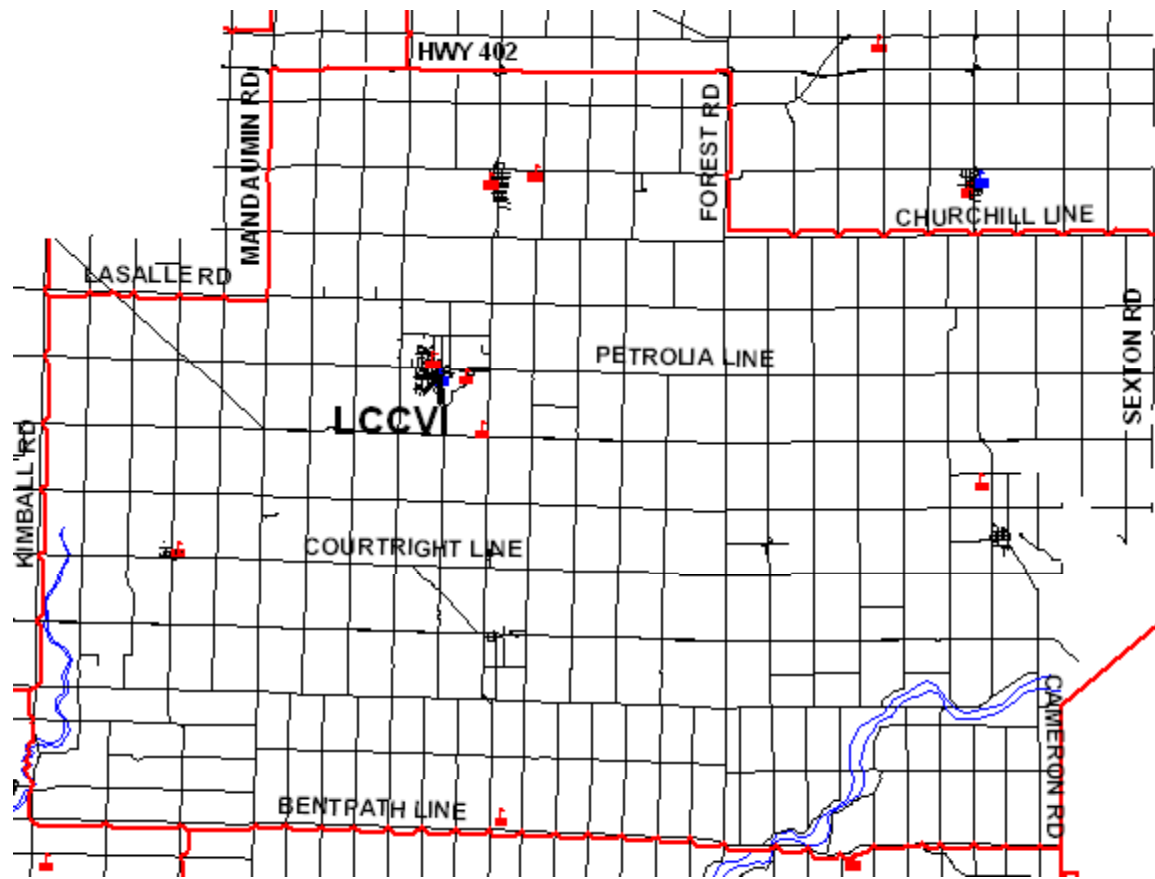
L.K.D.S.B. AVERAGE DAILY ENROLMENT HISTORY 1998-99 to 2008-09





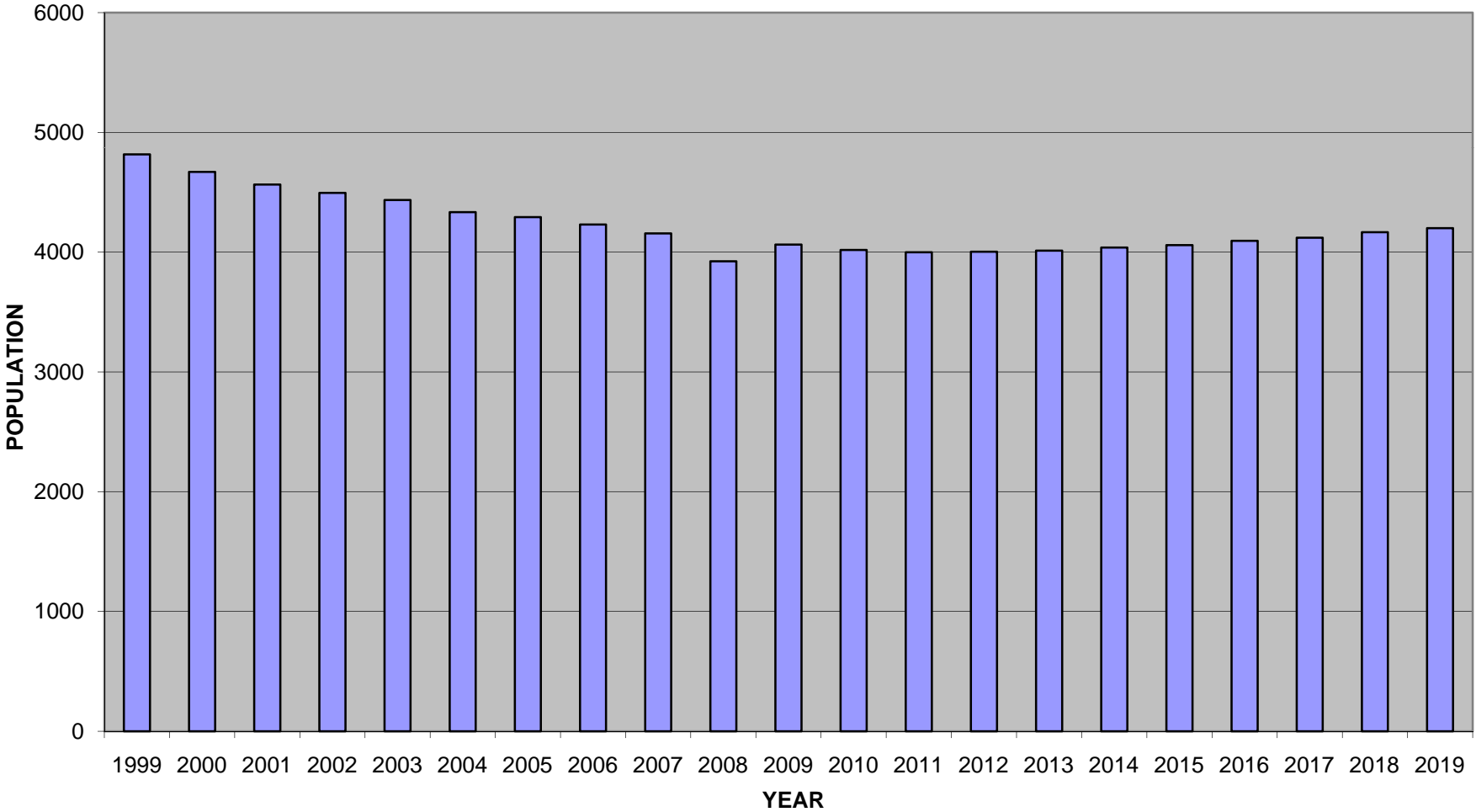
DEMOGRAPHIC TRENDS OF THE PETROLIA FAMILY OF SCHOOLS

LCCVI AREA CATCHMENT MAP





HISTORY AND PROJECTION OF CHILDREN LIVING IN THE L.C.C.V.I. CATCHMENT AREA - AGES 1 TO 18

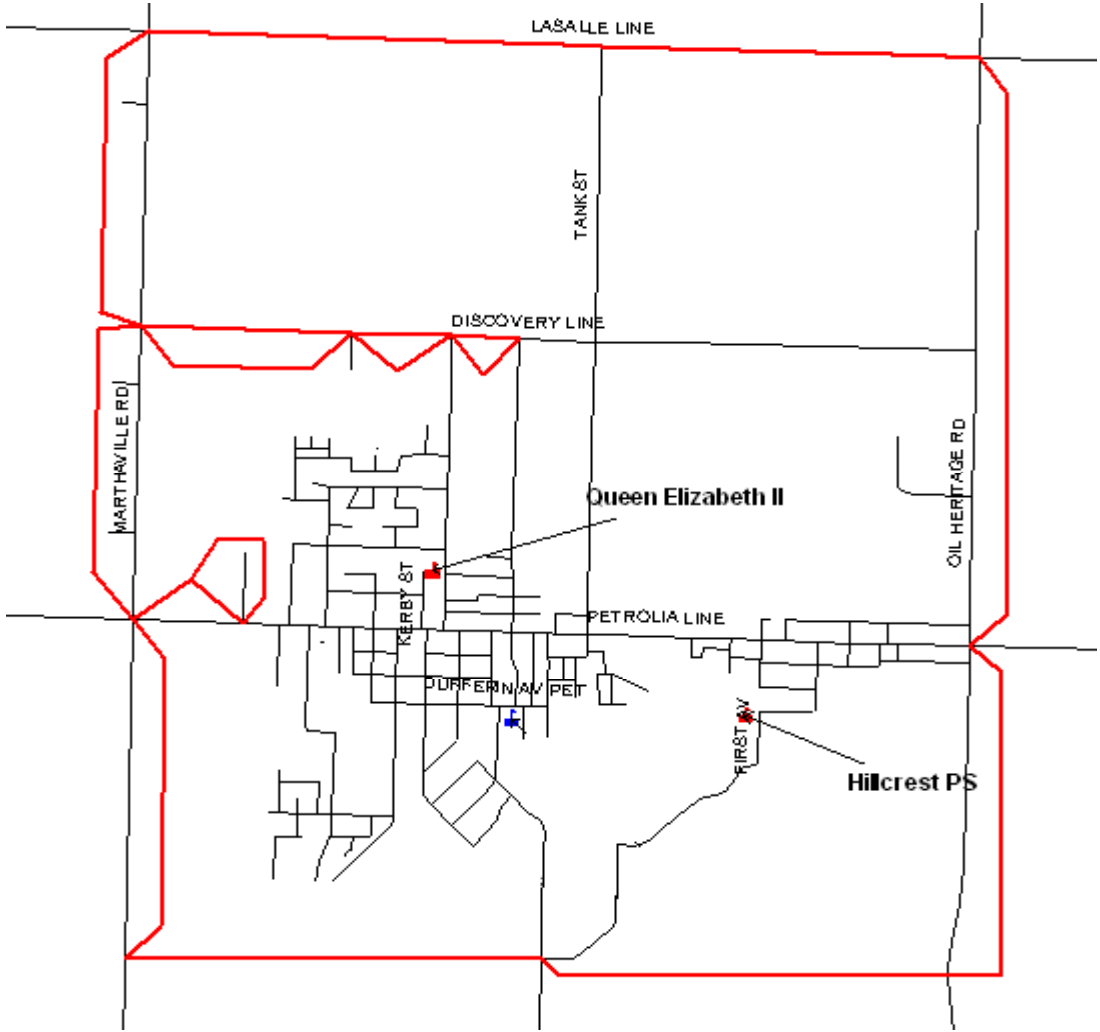


ENROLMENT HISTORY AND PROJECTIONS

LAMBTON CENTRAL C.V.I.

	Oct. 2004	Oct. 2005	Oct. 2006	Oct. 2007	Oct. 2008	Oct. 2009	Proj. 2010	Proj. 2011	Proj. 2012	Proj. 2013	Proj. 2014
1218											
Gr. 9	250	266	258	249	248	224	222	228	217	216	213
Gr. 10	290	256	263	260	251	249	231	224	230	219	219
Gr. 11	282	297	260	266	253	255	247	230	224	230	219
Gr. 12	373	367	379	358	332	324	320	317	300	294	300
SPEC.	17	18	17	18	18	21	20	20	20	20	20
Totals	1212	1204	1177	1151	1102	1073	1040	1019	991	979	971
F.T.E.	1210.00	1203.00	1174.50	1147.00	1099.50	1073.00	1040.00	1019.00	991.00	979.00	971.00
%Full	99.34%	98.77%	96.43%	94.17%	90.27%	88.10%	85.39%	83.66%	81.36%	80.38%	79.72%

HILLCREST & QUEEN ELIZABETH II AREA CATCHMENT MAP





School Catchment Area for Students Attending French Immersion Programs at Hillcrest and Queen Elizabeth II

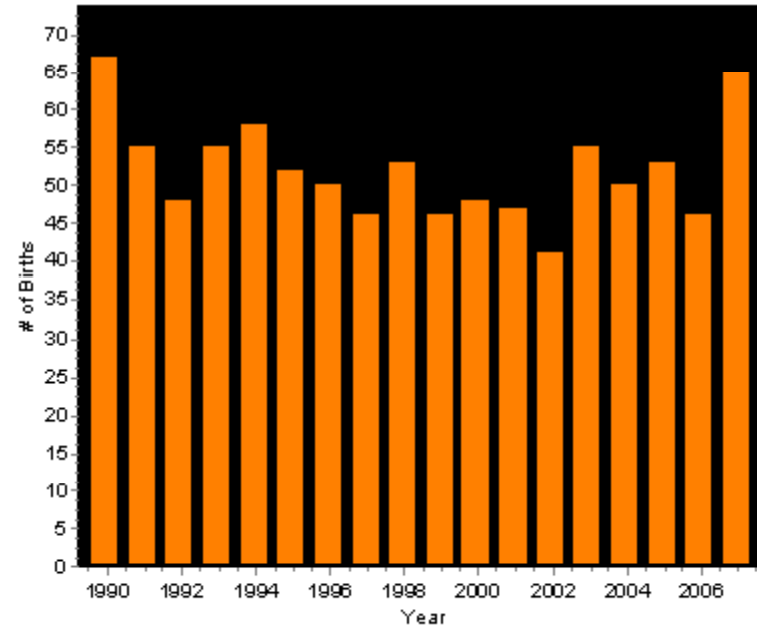
- Brigden
- Dawn Euphemia (some students)
 - Hillcrest
- Lambton Centennial
- Queen Elizabeth II
 - South Plympton
 - Wyoming

HILLCREST DEMOGRAPHICS

10 YEAR BIRTH RATE HISTORY

YEAR	BIRTHS	INCREASE/DECREASE
1997	46	
1998	53	7
1999	46	-7
2000	48	2
2001	47	-1
2002	41	-6
2003	55	14
2004	50	-5
2005	53	3
2006	46	-7
2007	65	19

Births: Hillcrest Public School (gr jk-3)



Change in School Age Population Last Year

	Age 1 to 4	Age 5 to 8	Age 9 to 12	Age 13 to 16	Total Pop. Change (%)
Hillcrest	7.0%	0.9%	-0.8%	-4.3%	0.3%

ENROLMENT HISTORY AND PROJECTIONS

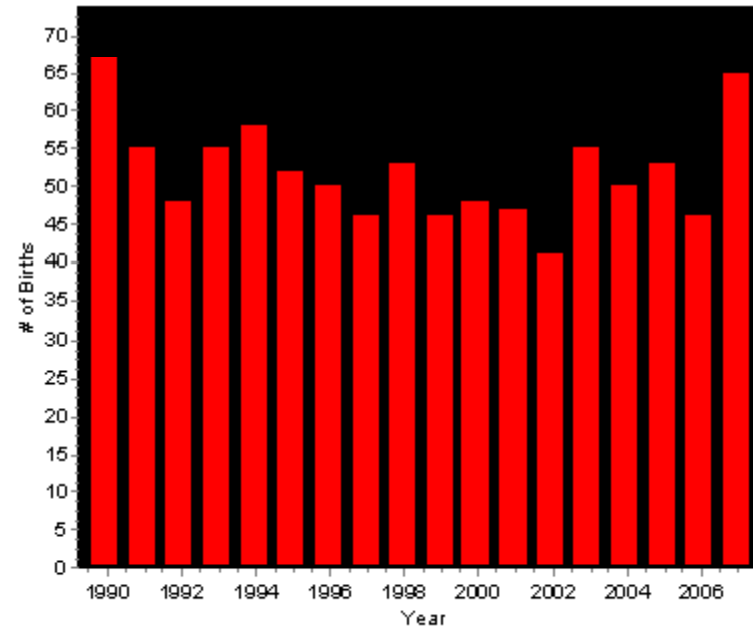
HILLCREST/QUEEN E				HILLCREST PUBLIC SCHOOL							
213	Oct. 2004	Oct. 2005	Oct. 2006	Oct. 2007	Oct. 2008	Oct. 2009	Proj. 2010	Proj. 2011	Proj. 2012	Proj. 2013	Proj. 2014
JK	47	46	46	56	64	62	63	71	67	69	75
SK	60	53	46	50	56	68	65	65	73	69	70
GR.1	63	59	60	49	48	65	68	65	65	73	69
GR.2	52	60	59	58	52	52	65	67	65	65	73
GR.3	44	51	61	42	58	50	52	65	67	65	65
GR.4	43	47	57								
GR.5	52	46	45								
GR.6	63	52	47								
GR.7	51	60	52								
GR.8	59	55	59								
SPEC.											
Totals	534	529	532	255	278	297	313	333	337	341	352
F.T.E.	480.50	479.50	486.00	202.00	218.00	232.00	249.00	265.00	267.00	272.00	279.50
%Full	98.46%	98.26%	99.59%	94.84%	102.35%	108.92%	116.90%	124.41%	125.35%	127.70%	131.22%

QUEEN ELIZABETH II DEMOGRAPHICS

10 YEAR BIRTH RATE HISTORY

YEAR	BIRTHS	INCREASE/DECREASE
1997	46	
1998	53	7
1999	46	-7
2000	48	2
2001	47	-1
2002	41	-6
2003	55	14
2004	50	-5
2005	53	3
2006	46	-7
2007	65	19

Births: Queen Elizabeth II (gr 4-8)



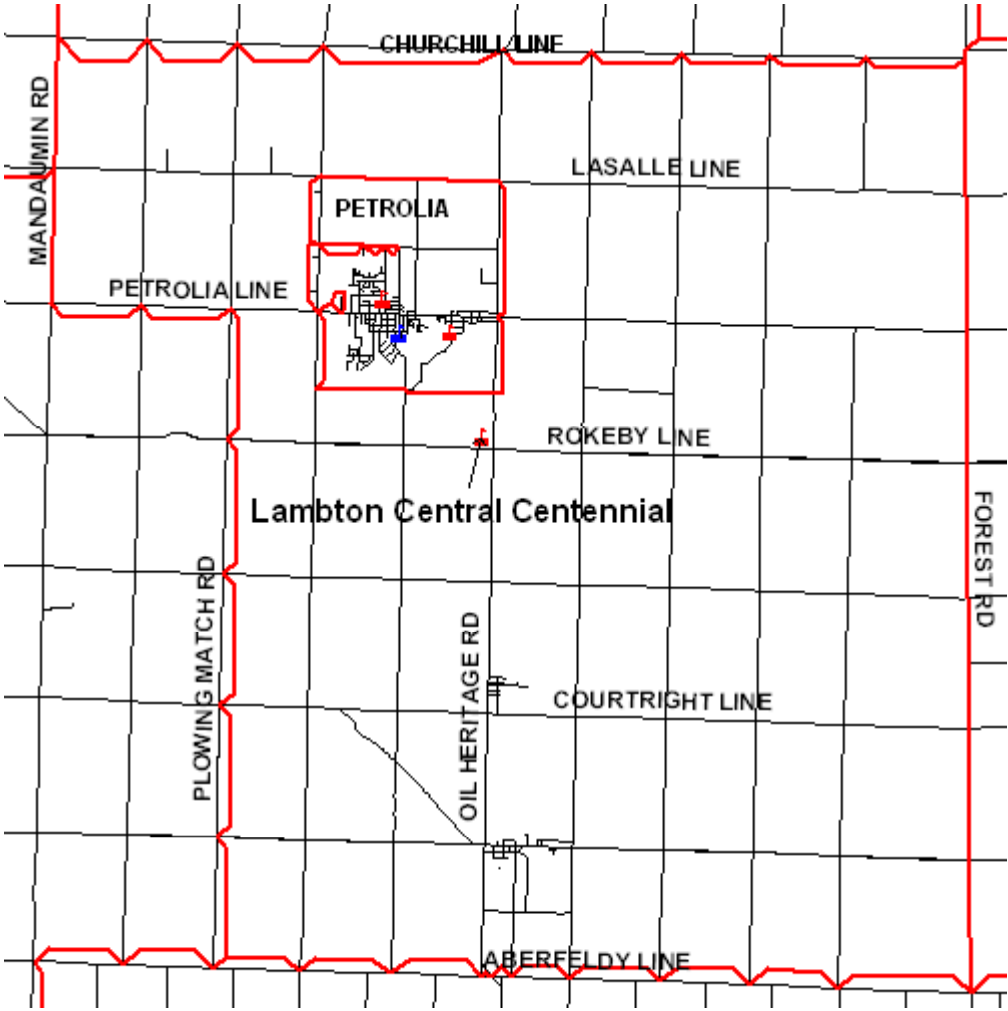
Change in School Age Population Last Year

	Age 1 to 4	Age 5 to 8	Age 9 to 12	Age 13 to 16	Total Pop. Change (%)
Queen Elizabeth II Petrolia	7.0%	0.9%	-0.8%	-4.3%	0.3%

ENROLMENT HISTORY AND PROJECTIONS

HILLCREST/QUEEN E				QUEEN ELIZABETH II - PETROLIA							
	Oct. 2004	Oct. 2005	Oct. 2006	Oct. 2007	Oct. 2008	Oct. 2009	Proj. 2010	Proj. 2011	Proj. 2012	Proj. 2013	Proj. 2014
253											
JK	47	46	46								
SK	60	53	46								
GR.1	63	59	60								
GR.2	52	60	59								
GR.3	44	51	61	13							
GR.4	43	47	57	63	55	57	51	49	65	63	68
GR.5	52	46	45	62	60	56	57	51	50	65	63
GR.6	63	52	47	47	60	60	56	57	51	50	60
GR.7	51	60	52	52	48	56	60	55	58	51	51
GR.8	59	55	59	52	51	53	55	60	54	58	51
SPEC.											
Totals	534	529	532	289	274	282	279	272	278	287	293
F.T.E.	480.50	479.50	486.00	289.00	274.00	282.00	279.00	272.00	278.00	287.00	293.00
%Full	98.46%	98.26%	99.59%	114.23%	108.30%	111.46%	110.28%	107.51%	109.88%	113.44%	115.81%

LAMBTON CENTRAL CENTENNIAL AREA CATCHMENT MAP

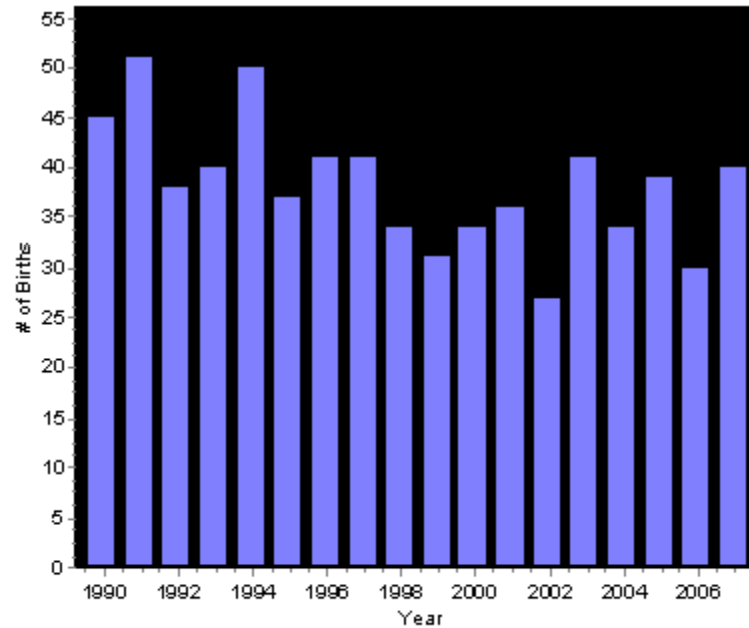


LAMBTON CENTENNIAL DEMOGRAPHICS

10 YEAR BIRTH RATE HISTORY

YEAR	BIRTHS	INCREASE/DECREASE
1997	41	
1998	34	-7
1999	31	-3
2000	34	3
2001	36	2
2002	27	-9
2003	41	14
2004	34	-7
2005	39	5
2006	30	-9
2007	40	10

Births: Lambton Centennial Public School (gr jk-8)



Change in School Age Population Last Year

	Age 1 to 4	Age 5 to 8	Age 9 to 12	Age 13 to 16	Total Pop. Change (%)
Lambton Centennial	0.7%	13.5%	-5.0%	-6.2%	-0.3%

ENROLMENT HISTORY AND PROJECTIONS

LAMBTON CENTENNIAL

	Oct. 2004	Oct. 2005	Oct. 2006	Oct. 2007	Oct. 2008	Oct. 2009	Proj. 2010	Proj. 2011	Proj. 2012	Proj. 2013	Proj. 2014
340											
JK	22	29	17	31	19	21	21	26	26	25	26
SK	25	24	30	19	30	20	24	23	27	27	26
GR.1	29	26	26	29	24	31	24	24	24	30	29
GR.2	32	29	27	28	29	23	31	24	25	25	30
GR.3	30	33	27	25	27	30	23	33	24	25	24
GR.4	36	31	34	25	27	29	29	24	32	24	25
GR.5	43	36	31	34	26	27	28	31	24	32	24
GR.6	33	41	38	32	34	26	27	30	31	23	31
GR.7	43	33	41	37	34	34	26	27	30	32	24
GR.8	49	41	32	42	37	35	34	26	27	29	31
SPEC.											
Totals	342	323	303	302	287	276	267	268	270	272	270
F.T.E.	318.50	296.50	279.50	277.00	262.50	255.50	244.50	243.50	243.50	246.00	244.00
%Full	85.27%	79.38%	74.83%	81.47%	77.21%	75.15%	71.91%	71.62%	71.62%	72.35%	71.76%



Communications

Board Website

www.lkdsb.net

Process for Public Input to ARC



Questions

- **From Committee Members**
- **From Public**





NEXT STEPS

DATES OF FUTURE MEETINGS

- **Timelines**



- **Proposed Locations**