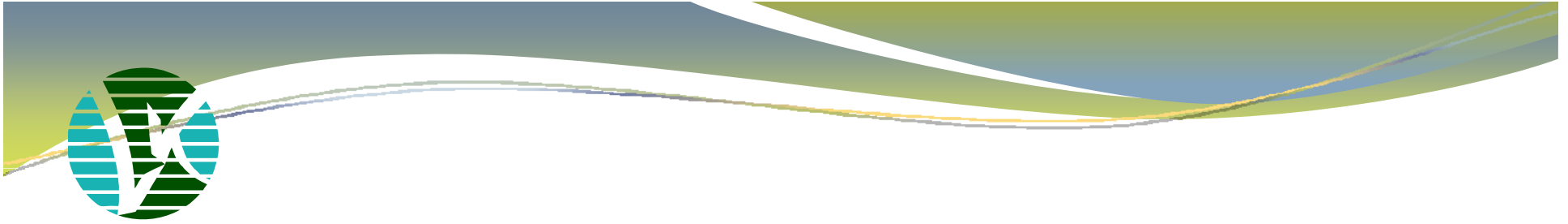




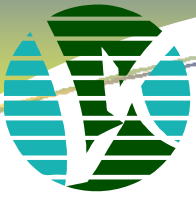
Lambton Kent
District School Board
Student Achievement ✓ Community Success

Dresden Family of Schools Pupil Accommodation Review

November 16, 2009

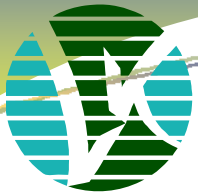


Welcome and Introduction of Members



Board Policy P-AD-106-09

“It is the policy of the Lambton Kent District School Board to operate and maintain its schools as effectively and efficiently as possible to support student achievement while exploring all opportunities to enhance the learning environment.”



Establishment of Accommodation Review Committee (ARC)

The Accommodation Review Committee (ARC) membership includes the following from each school:

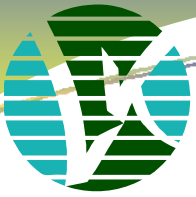
- a parent**
- a school administrator**
- a community representative**
- a municipal partner representative**
- a First Nations representative if appropriate**
- the Board's Planning and Reporting Officer**

The Director or designated Superintendent facilitates and chairs ARC meetings. Trustees will attend as observers.

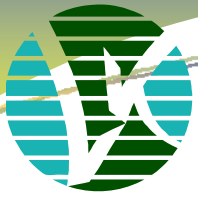


Role of the Accommodation Review Committee

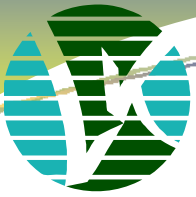
The Accommodation Review Committee (ARC) analyzes School Information Profiles, considers alternatives and makes recommendations that meet the educational and accommodation objectives of the Lambton Kent District School Board. Throughout the process the ARC consults with community members and provides opportunity for input into the analysis.



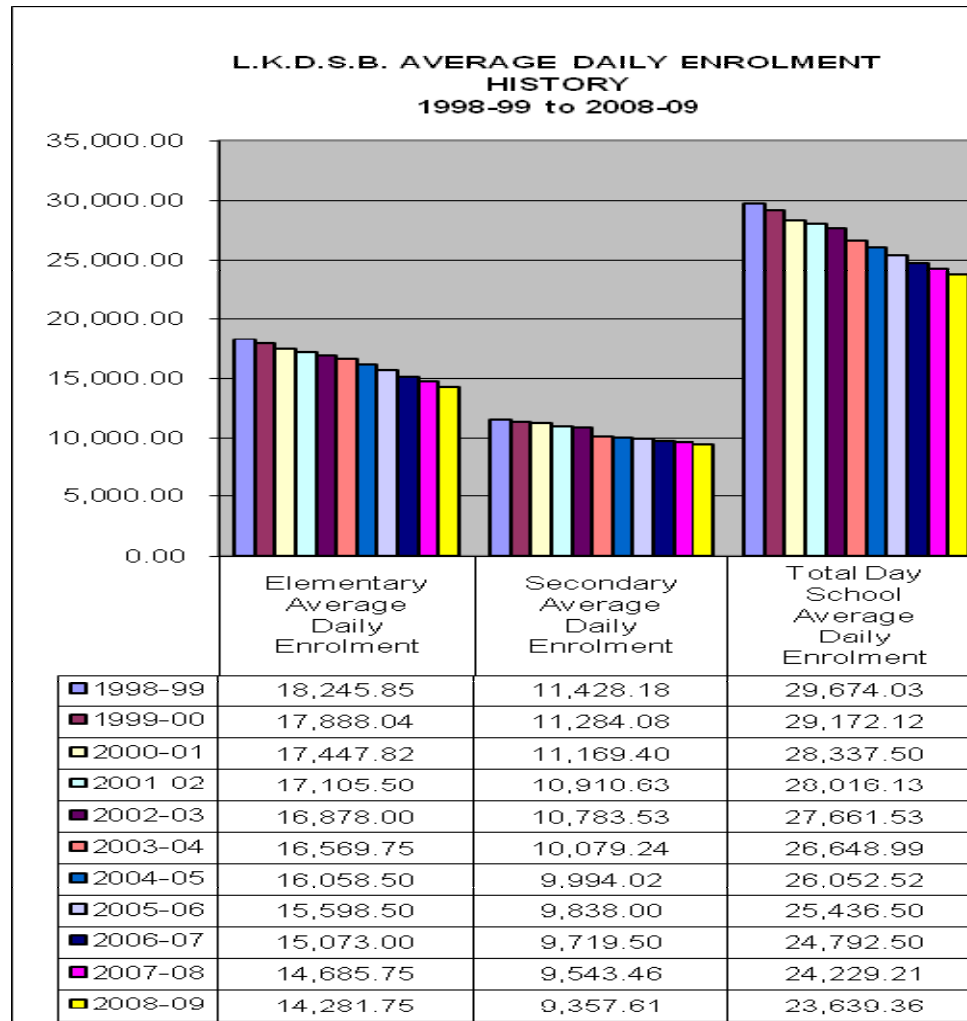
School Information Profiles

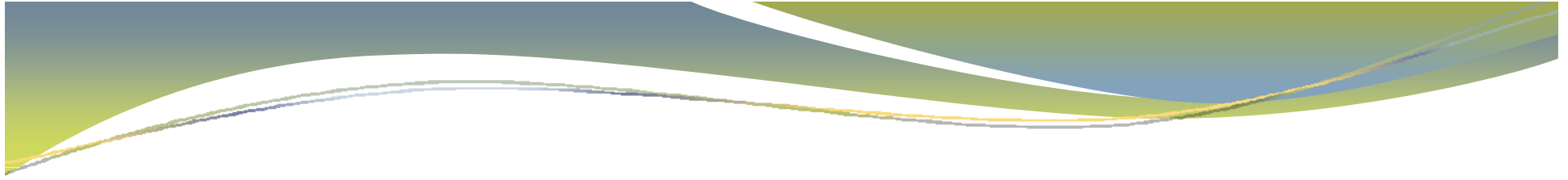


DEMOGRAPHIC TRENDS OF THE LAMBTON KENT DISTRICT SCHOOL BOARD



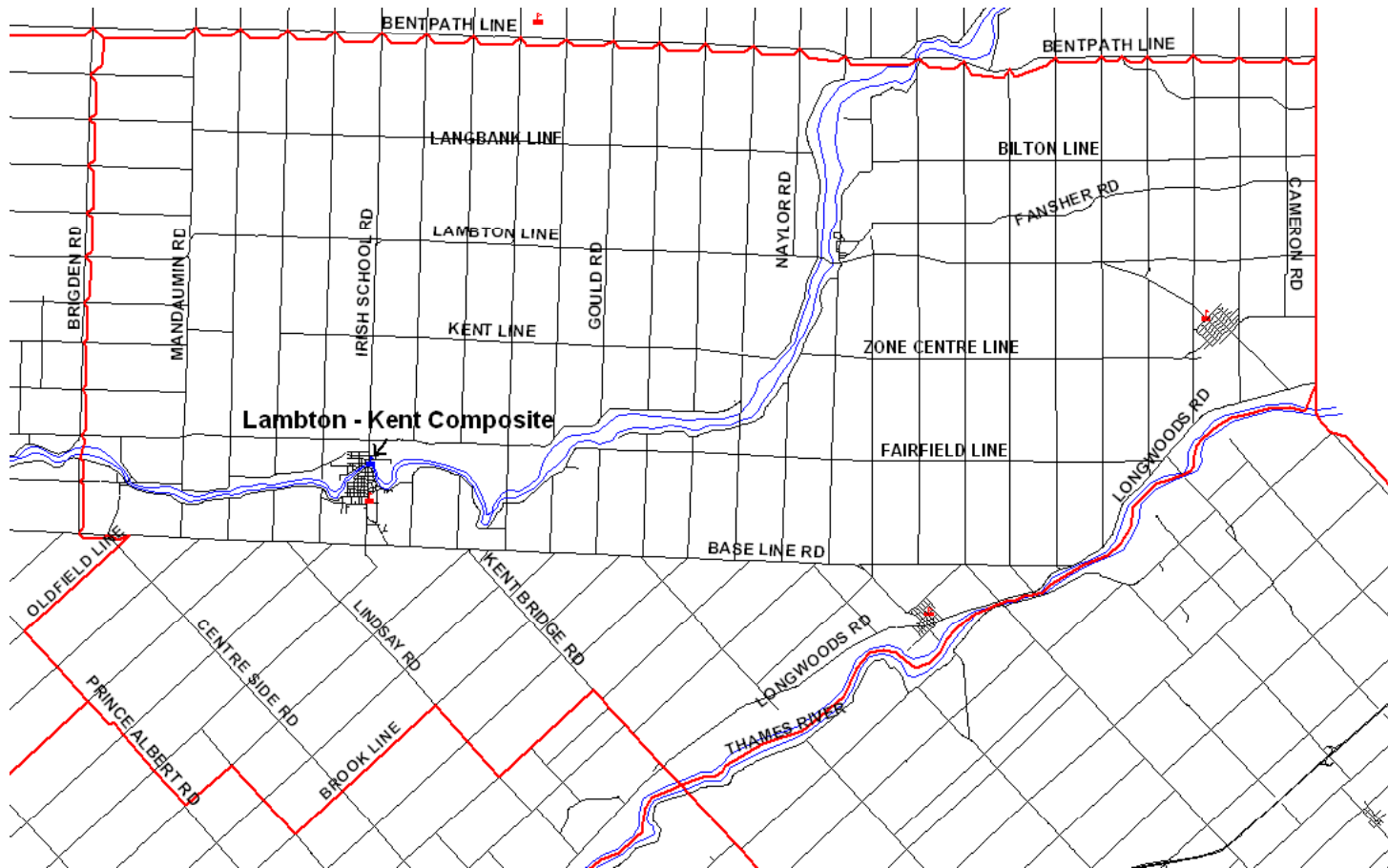
L.K.D.S.B. AVERAGE DAILY ENROLMENT HISTORY 1998-99 to 2008-09





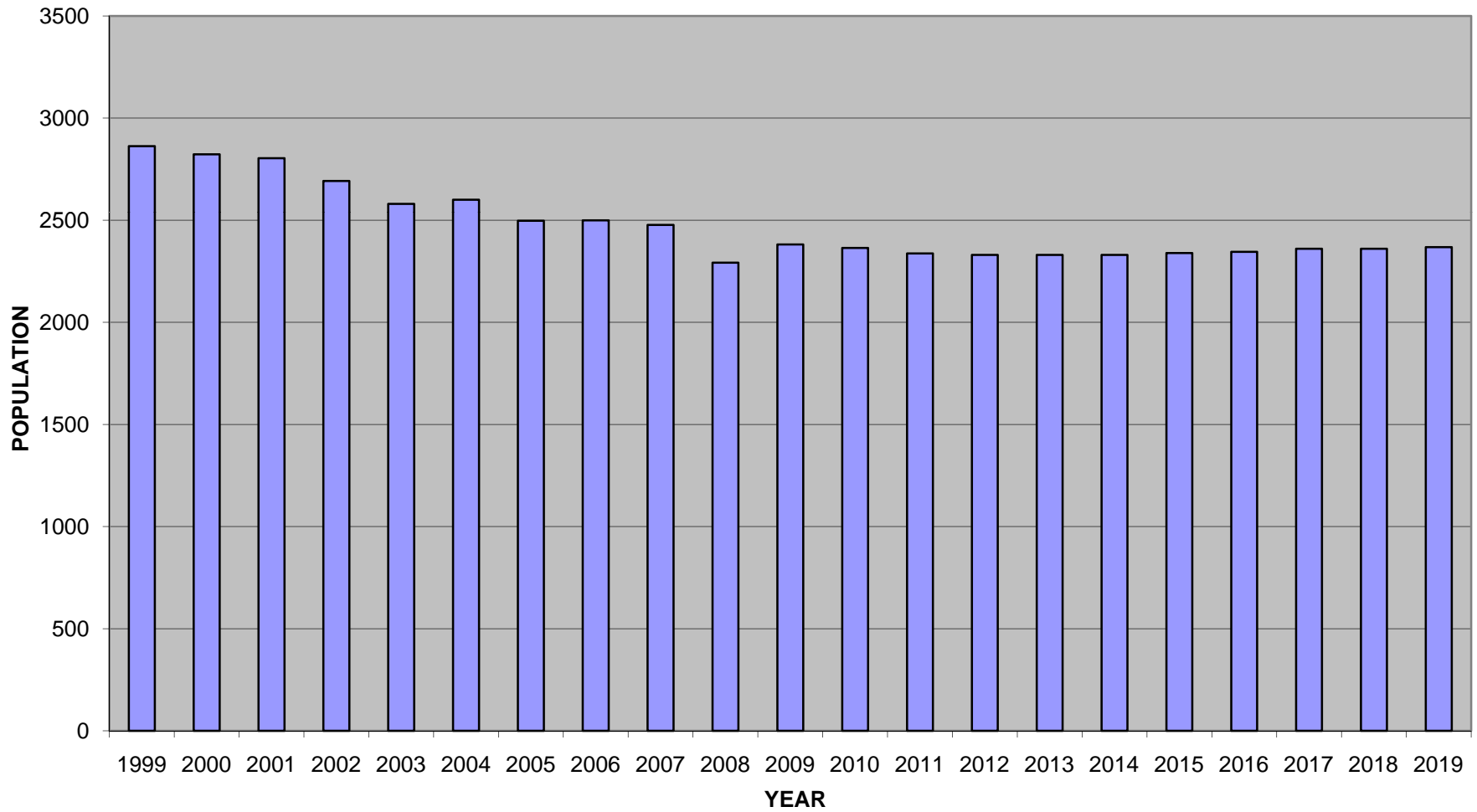
DEMOGRAPHIC TRENDS OF THE DRESDEN FAMILY OF SCHOOLS

LKCS AREA CATCHMENT MAP





HISTORY AND PROJECTION OF CHILDREN LIVING IN THE LAMBTON KENT C.S. CATCHMENT AREA - AGES 1 TO 18

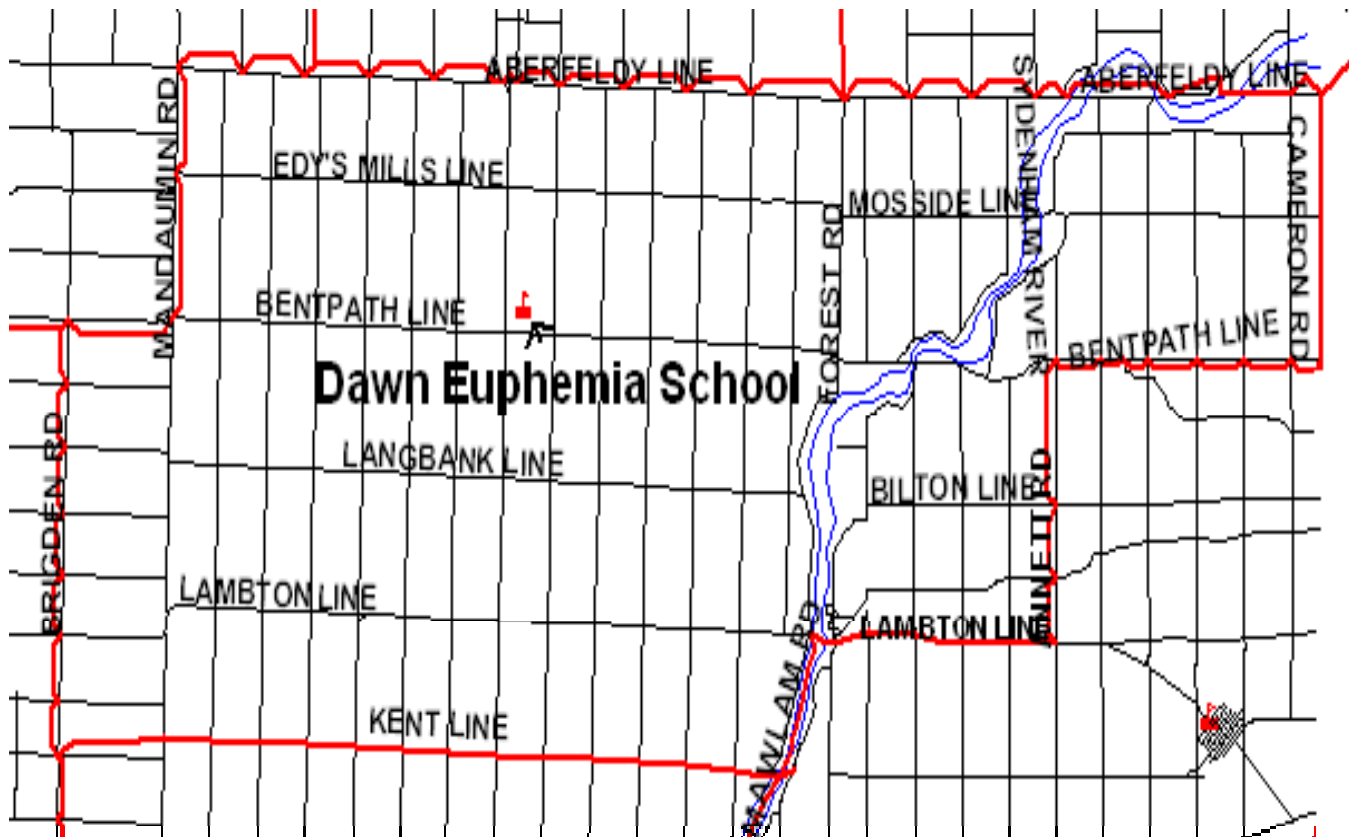


ENROLMENT HISTORY AND PROJECTIONS

LAMBTON-KENT COMPOSITE SCHOOL

	Oct. 2004	Oct. 2005	Oct. 2006	Oct. 2007	Oct. 2008	Oct. 2009	Proj. 2010	Proj. 2011	Proj. 2012	Proj. 2013	Proj. 2014
714											
Gr. 9	109	105	89	111	97	79	95	88	92	84	95
Gr. 10	103	105	97	89	102	94	76	95	88	90	81
Gr. 11	103	97	103	86	88	98	90	74	91	84	86
Gr. 12	149	129	127	128	100	103	108	102	88	101	95
SPEC.											
Totals	464	436	416	414	387	374	369	359	359	359	357
F.T.E.	458.02	426.31	411.25	412.50	386.14	373.00	367.00	357.50	359.00	358.00	357.00
%Full	64.15%	59.71%	57.60%	57.77%	54.08%	52.24%	51.40%	50.07%	50.28%	50.14%	50.00%

DAWN-EUPHEMIA CENTRAL AREA CATCHMENT MAP

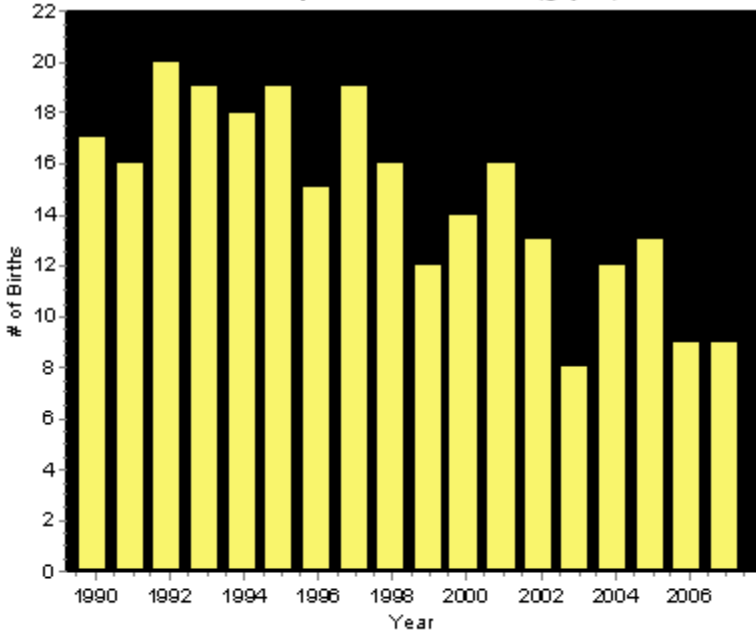


DAWN-EUPHEMIA DEMOGRAPHICS

10 YEAR BIRTH RATE HISTORY

YEAR	BIRTHS	INCREASE/DECREASE
1997	19	
1998	16	-3
1999	12	-4
2000	14	2
2001	16	2
2002	13	-3
2003	8	-5
2004	12	4
2005	13	1
2006	9	-4
2007	9	0

Births: Dawn Euphemia Public School (gr jk-8)



Change in School Age Population Last Year

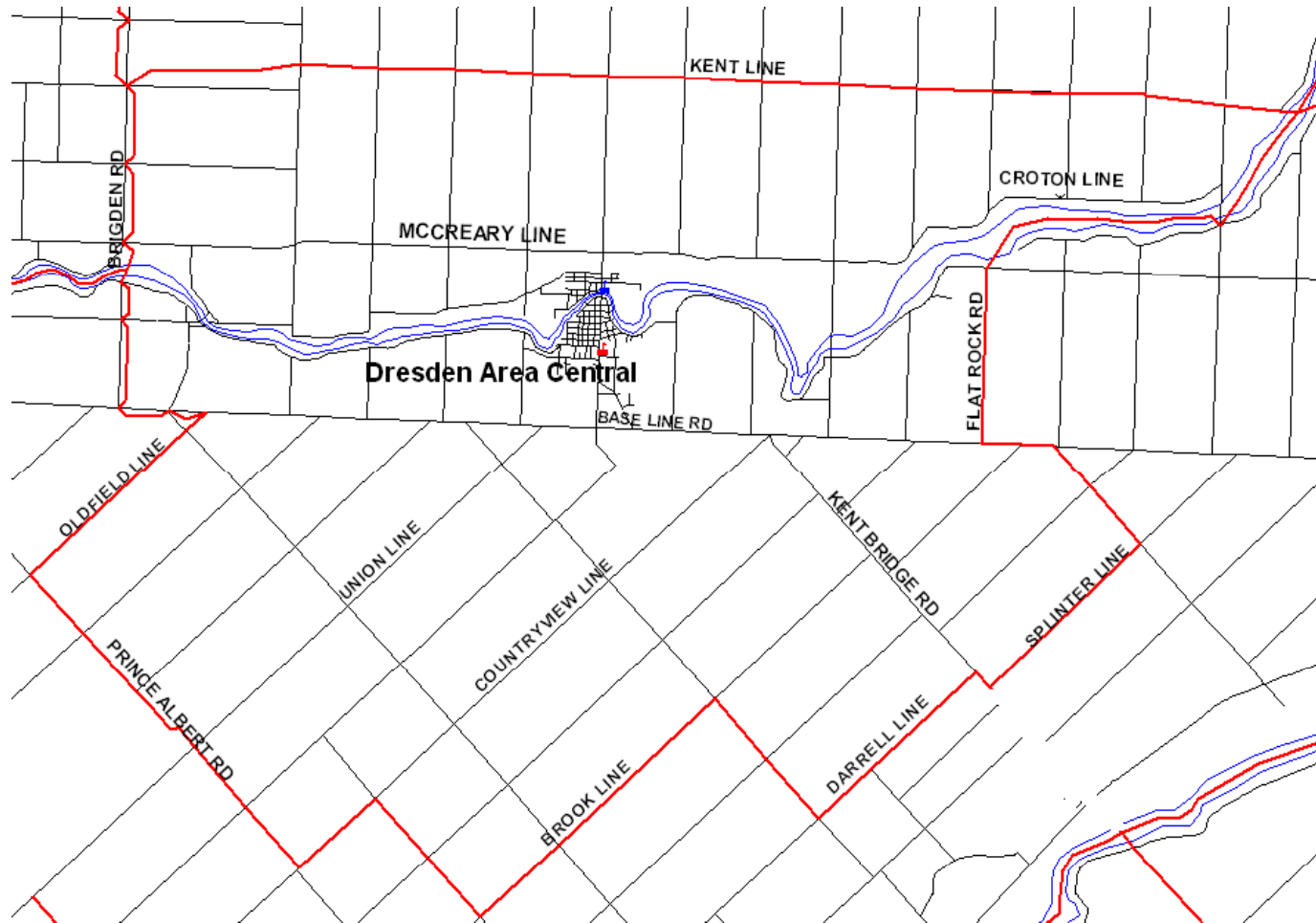
	Age 1 to 4	Age 5 to 8	Age 9 to 12	Age 13 to 16	Total Pop. Change (%)
Dawn-Euphemia Central	2.0%	9.5%	-8.2%	-6.4%	-1.8%

ENROLMENT HISTORY AND PROJECTIONS

DAWN-EUPHEMIA

225	Oct. 2004	Oct. 2005	Oct. 2006	Oct. 2007	Oct. 2008	Oct. 2009	Proj. 2010	Proj. 2011	Proj. 2012	Proj. 2013	Proj. 2014
JK	10	15	8	13	13	10	14	13	14	14	14
SK	11	14	12	8	13	12	10	14	13	14	14
GR.1	16	10	14	11	7	14	12	11	14	12	14
GR.2	16	15	11	16	13	7	14	12	11	14	12
GR.3	17	13	15	13	13	12	8	15	13	10	14
GR.4	20	20	8	16	16	14	13	8	14	13	10
GR.5	36	17	18	10	17	14	14	13	8	14	12
GR.6	25	33	18	18	11	18	15	14	13	8	14
GR.7	25	24	30	20	17	15	20	16	14	13	8
GR.8	27	24	27	32	18	16	14	20	15	14	13
SPEC.											
Totals	203	185	161	157	138	132	134	136	129	126	125
F.T.E.	192.50	170.50	151.00	146.50	125.00	121.00	122.00	122.50	115.50	112.00	111.00
%Full	75.20%	66.60%	58.98%	65.11%	55.56%	53.78%	54.22%	54.44%	51.33%	49.78%	49.33%

DRESDEN AREA CENTRAL CATCHMENT MAP

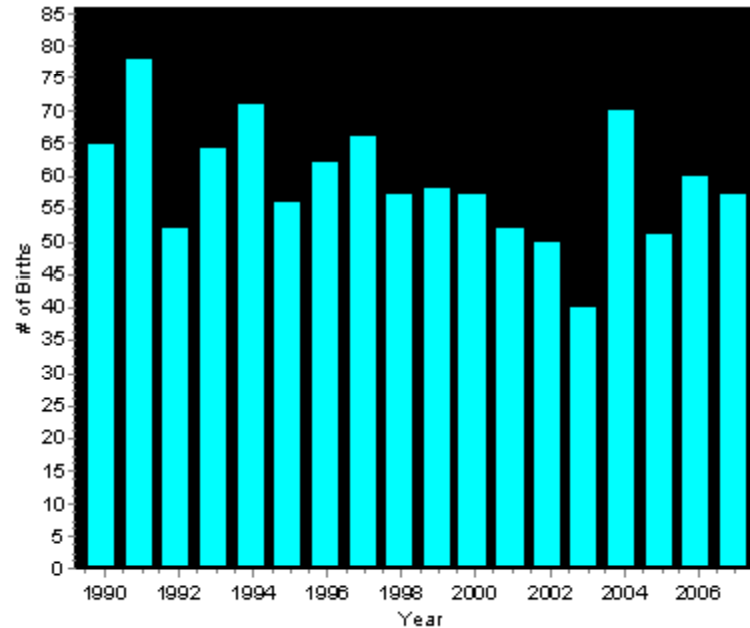


DRESDEN AREA CENTRAL DEMOGRAPHICS

10 YEAR BIRTH RATE HISTORY

YEAR	BIRTHS	INCREASE/DECREASE
1997	66	
1998	57	-9
1999	58	1
2000	57	-1
2001	52	-5
2002	50	-2
2003	40	-10
2004	70	30
2005	51	-19
2006	60	9
2007	57	-3

Births: Dresden Area Central School (gr jk-8)



Change in School Age Population Last Year

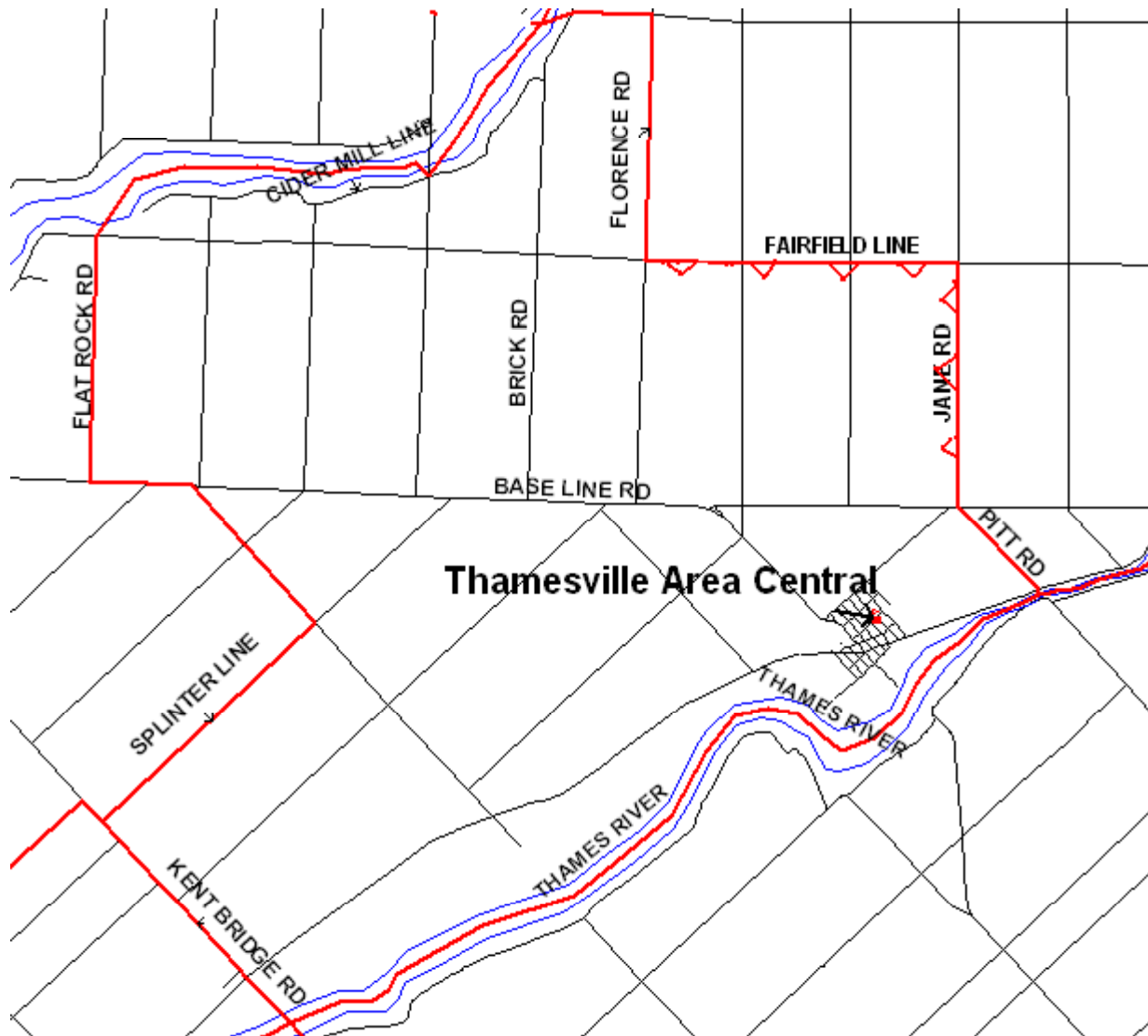
	Age 1 to 4	Age 5 to 8	Age 9 to 12	Age 13 to 16	Total Pop. Change (%)
Dresden Area Central	8.1%	-9.6%	-2.1%	-0.3%	-1.3%

ENROLMENT HISTORY AND PROJECTIONS

DRESDEN AREA CENTRAL

532	Oct. 2004	Oct. 2005	Oct. 2006	Oct. 2007	Oct. 2008	Oct. 2009	Proj. 2010	Proj. 2011	Proj. 2012	Proj. 2013	Proj. 2014
JK	33	29	35	22	31	29	29	34	29	29	29
SK	27	32	33	33	28	33	32	32	36	31	31
GR.1	40	39	41	31	32	28	34	33	31	39	31
GR.2	38	39	33	40	30	34	27	33	33	31	38
GR.3	36	40	35	33	40	34	34	27	35	32	31
GR.4	34	41	39	33	29	42	34	33	28	35	31
GR.5	35	33	40	38	32	32	43	32	33	28	35
GR.6	40	40	32	38	36	33	31	43	32	33	28
GR.7	37	46	37	31	40	33	32	31	41	32	33
GR.8	52	36	47	39	35	36	33	32	31	42	32
SPEC.											
Totals	372	375	372	338	333	334	329	330	329	332	319
F.T.E.	342.00	344.50	338.00	310.50	303.50	303.00	298.50	297.00	296.50	302.00	289.00
%Full	59.69%	60.12%	58.99%	58.36%	57.05%	56.95%	56.11%	55.83%	55.73%	56.77%	54.32%

THAMESVILLE AREA CENTRAL CATCHMENT MAP

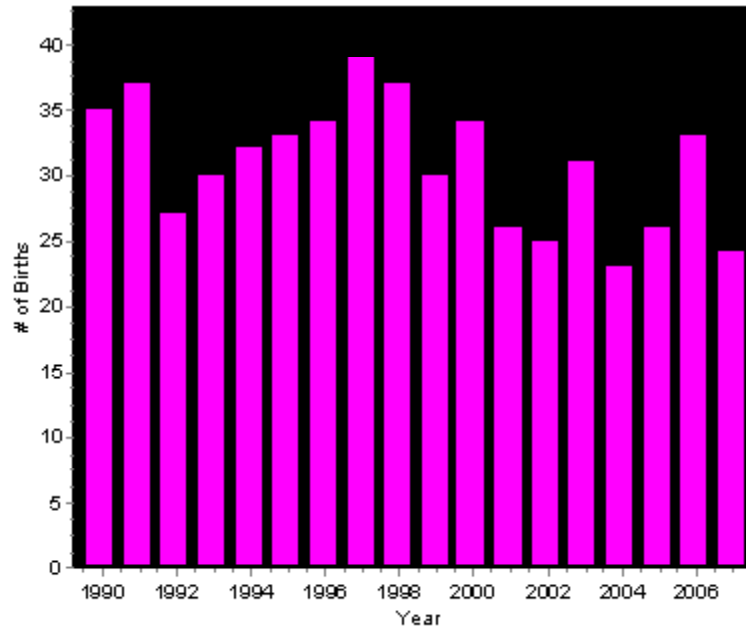


THAMESVILLE AREA CENTRAL DEMOGRAPHICS

10 YEAR BIRTH RATE HISTORY

YEAR	BIRTHS	INCREASE/DECREASE
1997	39	
1998	37	-2
1999	30	-7
2000	34	4
2001	26	-8
2002	25	-1
2003	31	6
2004	23	-8
2005	26	3
2006	33	7
2007	24	-9

Births: Thamesville Area Public School (gr jk-8)



Change in School Age Population Last Year

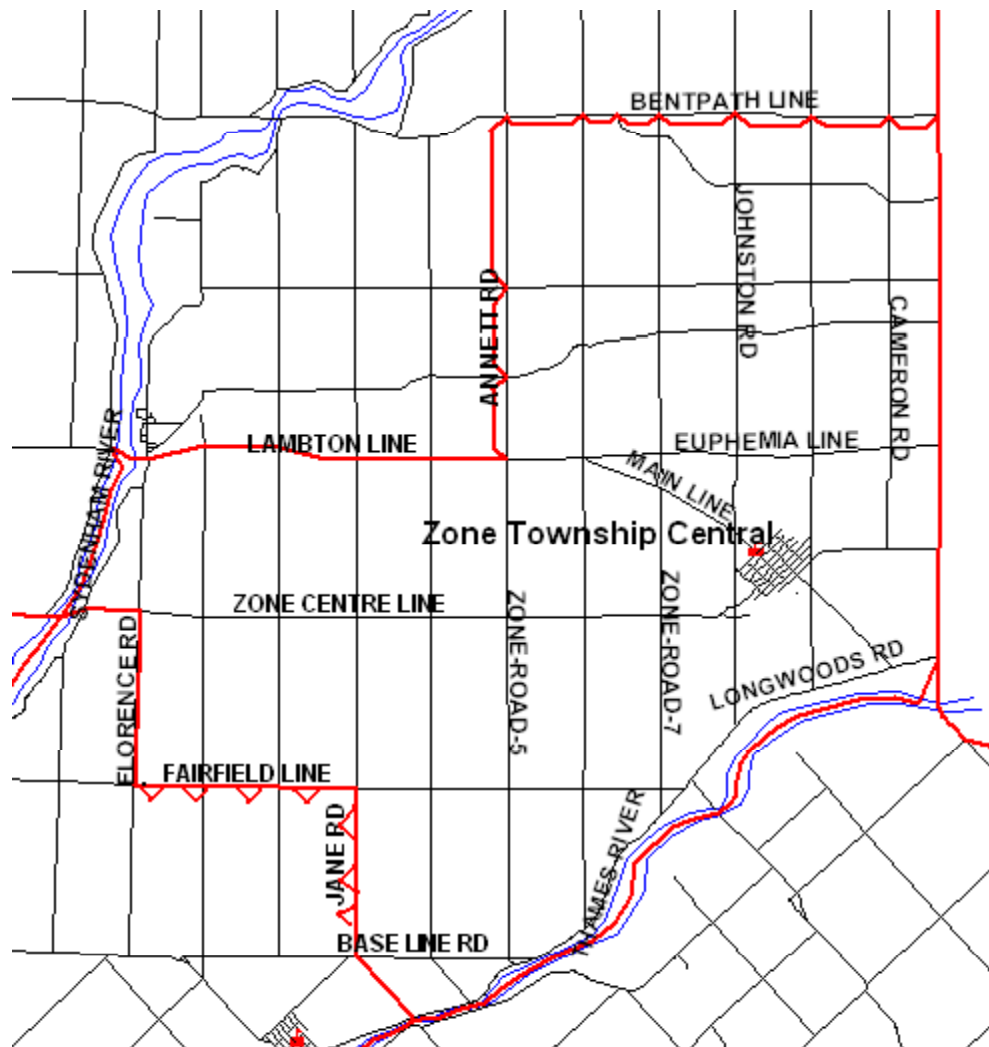
	Age 1 to 4	Age 5 to 8	Age 9 to 12	Age 13 to 16	Total Pop. Change (%)
Thamesville Area Central	5.7%	-1.7%	-10.7%	4.2%	-1.2%

ENROLMENT HISTORY AND PROJECTIONS

THAMESVILLE AREA CENTRAL

	Oct. 2004	Oct. 2005	Oct. 2006	Oct. 2007	Oct. 2008	Oct. 2009	Proj. 2010	Proj. 2011	Proj. 2012	Proj. 2013	Proj. 2014
193											
JK	15	20	13	14	15	13	19	13	15	15	15
SK	15	18	21	18	15	19	16	22	14	17	16
GR.1	27	16	22	21	18	15	19	17	21	16	17
GR.2	25	21	16	16	22	17	14	19	17	21	16
GR.3	22	21	23	14	17	20	17	14	19	17	21
GR.4	25	21	24	24	12	15	22	18	14	19	16
GR.5	25	27	22	21	24	12	16	22	18	14	19
GR.6	33	22	28	22	22	21	12	17	23	18	14
GR.7	17	25	20	27	18	21	20	13	17	23	17
GR.8	27	16	26	20	24	19	21	20	13	16	23
SPEC.			1								
Totals	231	207	216	197	187	172	176	175	171	176	174
F.T.E.	216.00	188.00	199.00	181.00	172.00	156.00	158.50	157.50	156.50	160.00	158.50
%Full	96.64%	84.12%	89.04%	93.78%	89.12%	80.83%	82.12%	81.61%	81.09%	82.90%	82.12%

ZONE TOWNSHIP CENTRAL CATCHMENT MAP

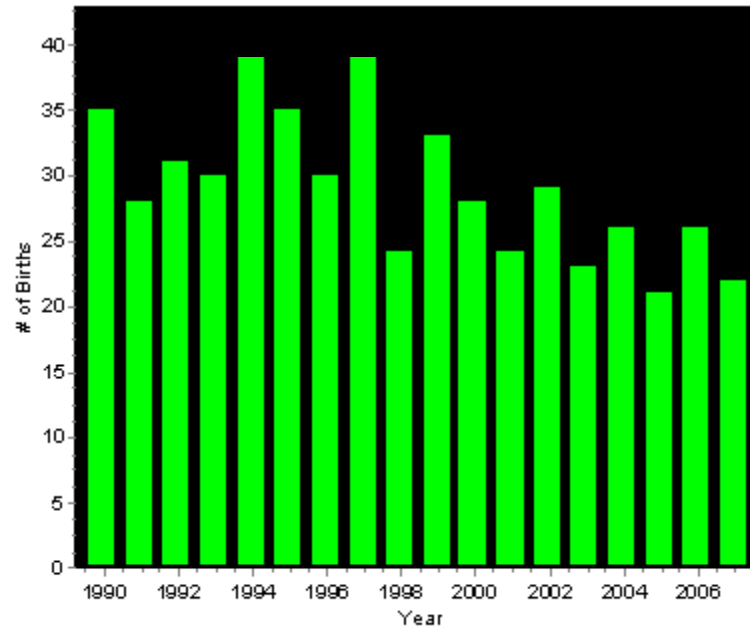


ZONE TOWNSHIP CENTRAL DEMOGRAPHICS

10 YEAR BIRTH RATE HISTORY

YEAR	BIRTHS	INCREASE/DECREASE
1997	39	
1998	24	-15
1999	33	9
2000	28	-5
2001	24	-4
2002	29	5
2003	23	-6
2004	26	3
2005	21	-5
2006	26	5
2007	22	-4

Births: Zone Township Central School (gr jk-8)



Change in School Age Population Last Year

	Age 1 to 4	Age 5 to 8	Age 9 to 12	Age 13 to 16	Total Pop. Change (%)
Zone Township Central	-3.9%	-6.7%	2.9%	-8.0%	-3.9%

ENROLMENT HISTORY AND PROJECTIONS

ZONE TOWNSHIP CENTRAL

	Oct. 2004	Oct. 2005	Oct. 2006	Oct. 2007	Oct. 2008	Oct. 2009	Proj. 2010	Proj. 2011	Proj. 2012	Proj. 2013	Proj. 2014
213											
JK	16	21	13	12	15	10	15	15	16	17	15
SK	13	19	22	14	14	16	11	17	17	17	18
GR.1	12	24	20	25	15	14	17	13	18	17	17
GR.2	16	16	23	21	22	16	14	17	12	18	17
GR.3	22	23	16	26	21	22	17	14	17	12	18
GR.4	15	27	23	15	25	22	22	16	14	16	12
GR.5	18	22	29	23	18	24	21	22	16	14	15
GR.6	18	25	21	29	21	19	23	21	22	15	14
GR.7	20	23	23	17	32	22	20	23	21	22	16
GR.8	15	23	22	23	18	31	22	20	23	21	22
SPEC.											
Totals	165	223	212	205	201	196	182	178	176	169	164
F.T.E.	150.50	203.00	194.50	192.00	186.50	183.00	169.00	162.00	159.50	152.00	147.50
%Full	68.25%	92.06%	88.21%	90.14%	87.56%	85.92%	79.34%	76.06%	74.88%	71.36%	69.25%



Communications

Board Website

www.lkdsb.net



Process for Public Input to ARC



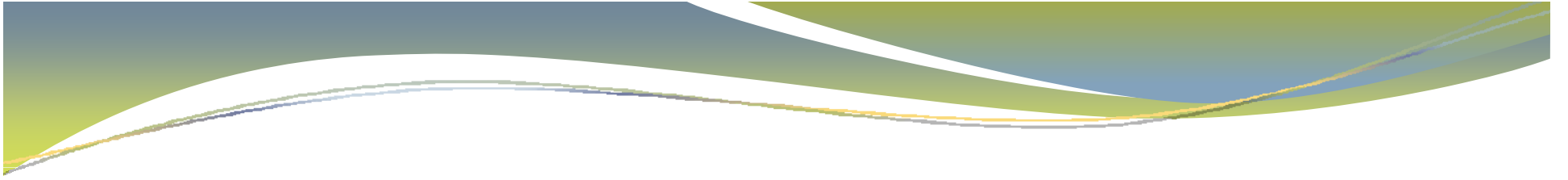


Questions

- **From Committee Members**

- **From Public**





NEXT STEPS

DATES OF FUTURE MEETINGS

- **Timelines**



- **Proposed Locations**