



# Chatham Elementary Schools Pupil Accommodation Review Committee Working Meeting #1

---

Co-Chairpersons:

Gary Girardi, Superintendent of Education – Capital Planning and Pupil Accommodation

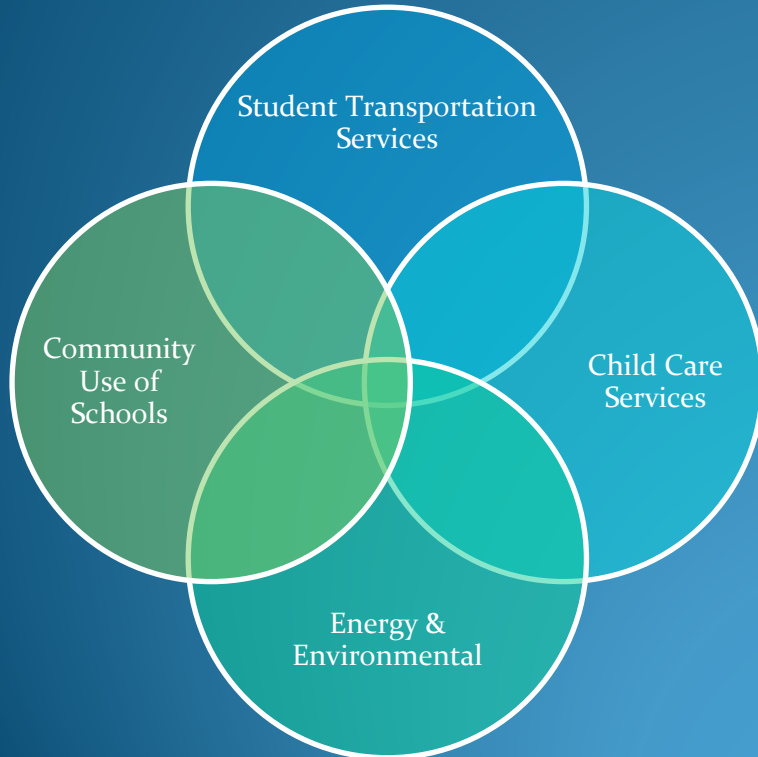
Angie Barrese, Superintendent of Education – Special Education

Helen Lane, Superintendent of Education – Leadership and Equity



# Agenda

- Welcome and Call to Order
- Adoption of Agenda
- Adoption of Minutes/Record of Action from Public Meeting 1
- Committee Role and Individual Reflection of Public Meeting 1
- Follow-up Item from Orientation Meeting
  - 5.1 Safe Passage School – John N. Given Public School
- Questions from Committee Members
- Discussion with CLASS – Transportation
- Discussion with Architects
- Questions from Committee Members / Future Discussions
- Future Meetings
- Adjournment



Presentation for:  
Chatham Area – John N. Given ARC  
Working Committee Members Meeting  
January 19, 2017

# Presentation Agenda

## 1) Current Student Transportation Services

- John N. Given
- McNaughton Ave
- Tecumseh

## 2) Current Tecumseh Loading / Unloading

- Site Overhead View
- Process Observations

## 3) Proposed Consolidated School Overview


- Student Transportation Services
- Traffic Management Strategies (Student Loading/Unloading, Route Timing, Site Design Considerations)



# Current Student Transportation Services:



# John N. Given Public School

- Bell Times:  
9:05am – 3:25pm
  - 10 School Buses:  
9 Full size  
1 mini accessible
  - 8 Buses also service McNaughton, and 1 also services local SCCDSB school(s)
  - FI students riding buses already servicing McNaughton Avenue
  - 68 Planned Riders
- 

# McNaughton Ave Public School

- Bell Times:  
9:15am – 3:35pm
- 13 School Buses:  
12 Full size  
1 mini-sized
- 8 Buses also service John N Given, and 1 also services local SCCDSB school(s)
- FI students riding buses also servicing John N Given
- 462 Planned Riders



# Tecumseh Public School

- Bell Times:  
9:15am – 3:35pm
- 6 School Buses:  
4 Full size  
2 mini accessible
- 1 Mini-size accessible bus also services SCCDSB school(s)
- 115 Planned Student Riders

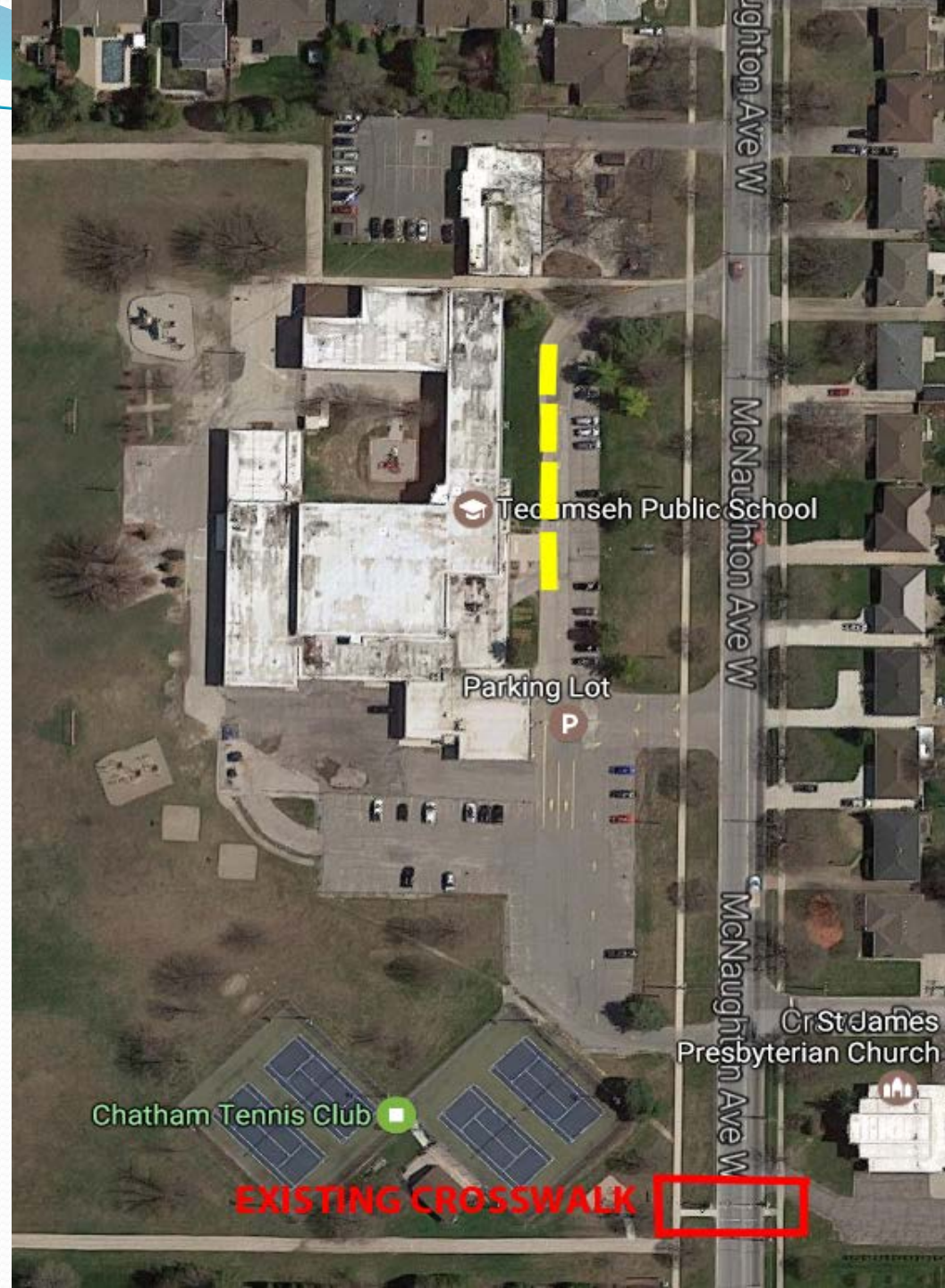




# Current Tecumseh Loading / Unloading Process

# Tecumseh site overhead view

- All buses utilize loading zone in front of school.
- Accessible mini-buses depart at approximately 3:25pm.
- Full size buses depart at approximately 3:40pm.
- All buses turn onto McNaughton Avenue via shared loading zone / parking lot exit.



# Process Observations:

- School bus loading zone separated from motorists and pedestrians.
- Loading zone physically divided from parent parking with jersey barriers but shared exit onto McNaughton, vehicles mixing with buses to turn.
- Parents enter parking lot from west entrance only.
- Current volume of parent traffic generally fills parking lot at west side of school.

# Process Observations: cont.

- School has defined kiss and drop location; some challenges with compliance.
- Walking students (~230) generally exit through field at the back of the school.
- One defined pathway for students to access sidewalk along McNaughton Avenue at east side of school.
- School advises parents to park at church on busy (weather, sports) days.
- No street parking at all allowed on McNaughton Avenue.





# Proposed Consolidated School Overview

# John N. Given & Tecumseh Public School

- Bell Times:  
9:15am – 3:35pm
- 6 School Buses:  
4 Full size  
2 mini accessible
- 1 Mini-size accessible bus also services SCCDSB school(s)
- 146 Planned Student Riders (+31)
- 387 Walking Students (+ 156)

# Traffic Management Strategies:

- **Student Loading / Unloading Process:**
  - Consider staggered dismissal for bus and walk students; bus students first to clear buses from property and prevent motorist / bus / pedestrian conflicts.
  - Communication of process details to school community; training for walking students.
- **Route Timing:**
  - Continue with staggered bus arrival / departures with “waves” to minimize traffic and align with site configuration and school processes.

# Traffic Management Strategies: cont.

- **Site Design Considerations:**

- Maintain bus loading zone in front of school; ensure environment supports loading multiple buses.
- Defined, maintained walking path(s) for students from school to McNaughton Avenue with consideration for pedestrian / motorist interaction.
- Consider request to move existing crosswalk lights on West side of school closer to middle of property.
- Expanded parking facilities and revisit traffic flow / kiss and drop.



# Thank You

**Kent Orr**  
**General Manager**

877.330.4287  
kent.orr@cklass.ca

[www.cklass.ca](http://www.cklass.ca)

[www.schoolbusinfo.com](http://www.schoolbusinfo.com)

[www.communityuseofschools.ca](http://www.communityuseofschools.ca)