

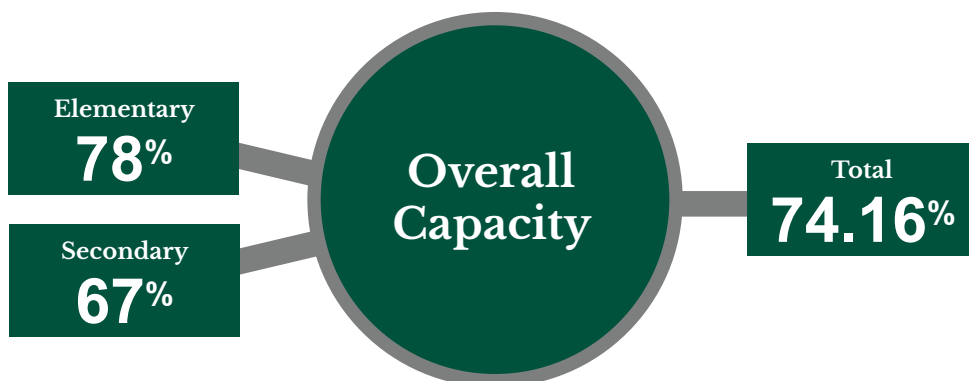
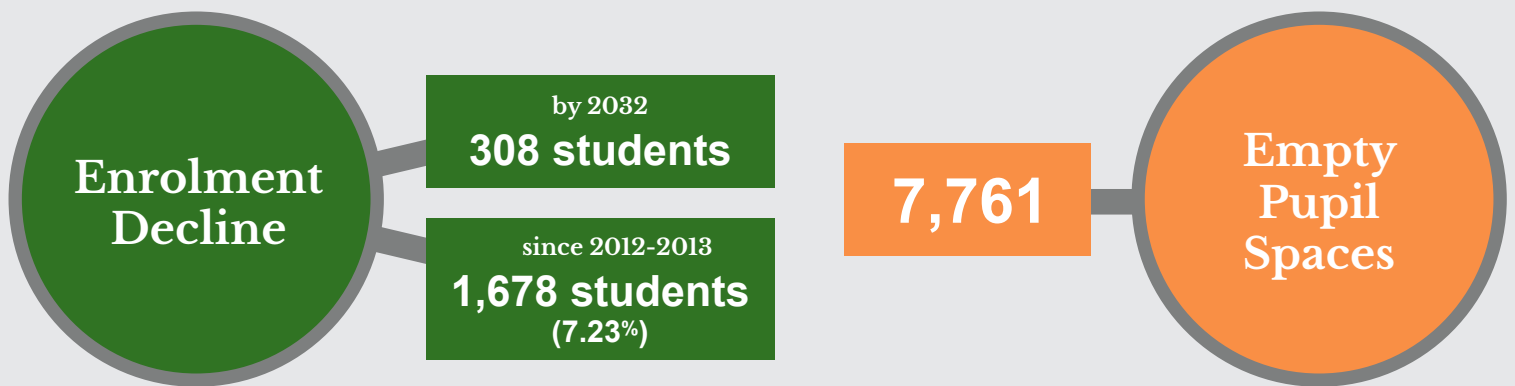
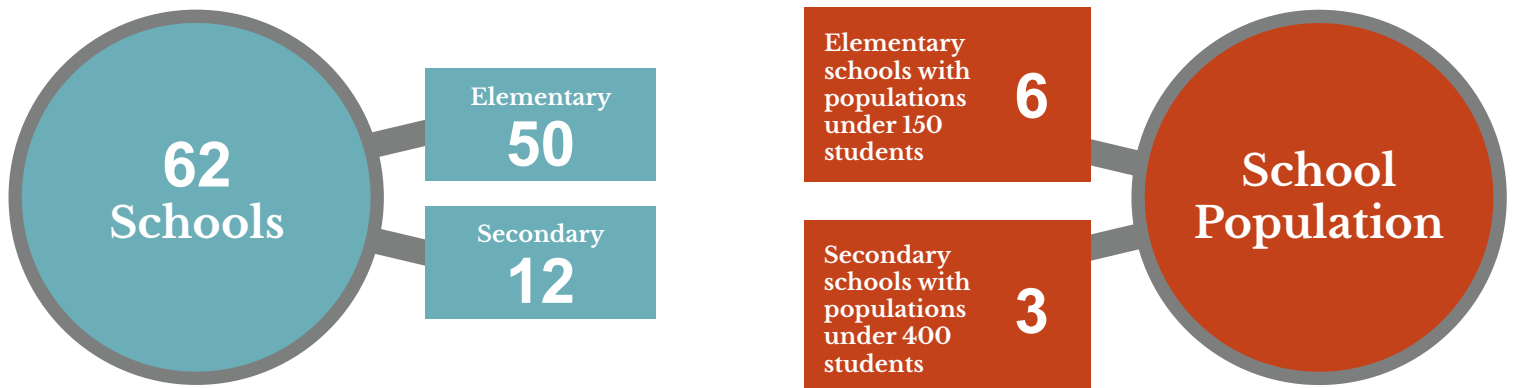
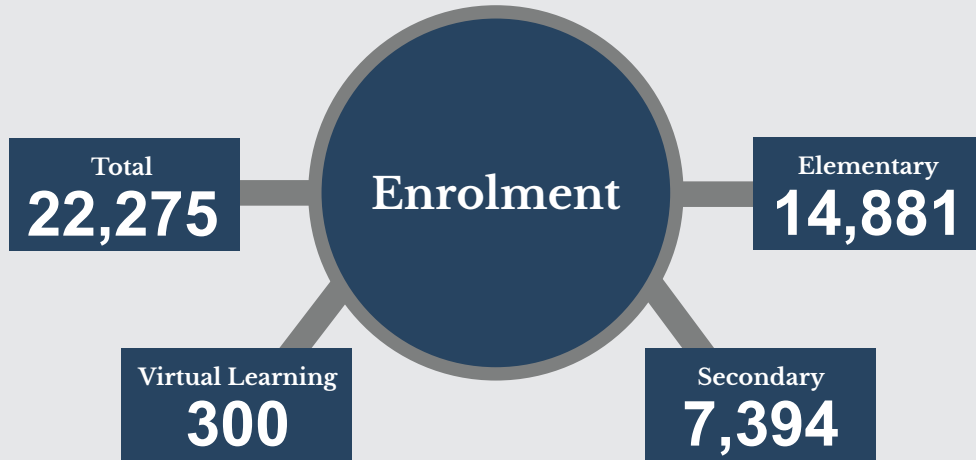
2022-2023

PUPIL ACCOMMODATION REPORT



Lambton Kent
District School Board
Student Achievement ✓ *Community Success*

2022-2023 LKDSB Pupil Accommodation Report





**FROM: John Howitt, Director of Education
Brian McKay, Associate Director – Corporate Services**

DATE: December 13, 2022

SUBJECT: LKDSB Pupil Accommodation Report 2022-2023



The LKDSB Pupil Accommodation Report 2022-2023 is presented to the Board in compliance with LKDSB Regulation No: R-AD-106.

On April 27, 2018, the Ministry of Education released a revised Pupil Accommodation Review Guideline (PARG).

Revisions made to the PARG:

- Additional public meeting(s), which extends timeframes, for a standard pupil accommodation review;
- Extending the timeframe for the first public meeting from 30 to 40 business days;
- Extending the timeframe between the first and final public meeting from 40 to 60 business days;
- New requirements to be contained in the Initial Staff Report, including the use of a Ministry template for the report:
 - A recommended scenario and at least two alternative scenarios, which could include the status quo, to address the accommodation issue(s);
 - The recommended and alternative scenarios must address the following four impacts:
 - Impact on student programming;
 - Impact on student well-being;
 - Impact on school board resources; and
 - Impact on local community.
 - If one of the schools included in the pupil accommodation review is eligible to receive support from the Rural and Northern Education Fund (RNEF) at any time, an impact on the local economy must be completed using the Ministry approved template.
- Promotion of community input in the pupil accommodation review process and inclusion of student voice; and
- Consideration of elementary student input.

The LKDSB incorporated the revisions into the LKDSB regulations on *Pupil Accommodation* in May 2018. At the time, school boards were still waiting for the release of templates for the Initial Staff Report and the economic impact assessment. The Ministry had indicated that it would provide some funding to school boards to complete the economic impact assessment, as well as list approved companies.

In June 2018, the moratorium on school closures was re-introduced by the Ministry of Education and school boards were advised that the provincial government would be reviewing the school closure process. A date for the release of the revised process has not been set.

As per LKDSB Regulation No: R-AD-106, the purpose of the LKDSB Pupil Accommodation Report 2022/2023 is to summarize data in order to provide an overview of accommodation issues across the geographic area of the Lambton Kent District School Board. The study of current student enrolment, demographic and financial data, as well as Ministry of Education initiatives, is key to future planning. Some of the data included in the *LKDSB Capital Plan June 2022* is included in this report.

The data presented in this report indicates that the LKDSB faces two ongoing challenges: demographics/declining enrolment in some geographic areas of the board and financial challenges, including the support of under-utilized schools and the maintenance of aging facilities.

Enrolment & Demographics

- LKDSB has 22,275 students as of October 31, 2022;
- LKDSB's Ministry-rated empty pupil spaces is 7,761 as of October 31, 2022;
- LKDSB's current capacity utilization as of October 31, 2022 is 74.16%; and
- LKDSB's projection of enrolment continues to fluctuate, and capacity utilization is 21,786 students in 2026 (72.53%) and 21,665 students in 2032 (72.13%).

While Statistics Canada predicts that the birth rate in Ontario will increase from 2017 to 2027, Lambton and Chatham-Kent birth rates and the projected student population is expected to reflect a neutral trend in birth rate in the LKDSB area in comparison to the province. This Statistics Canada data is supported by the Board's demographic software.

LKDSB's Enrolment History

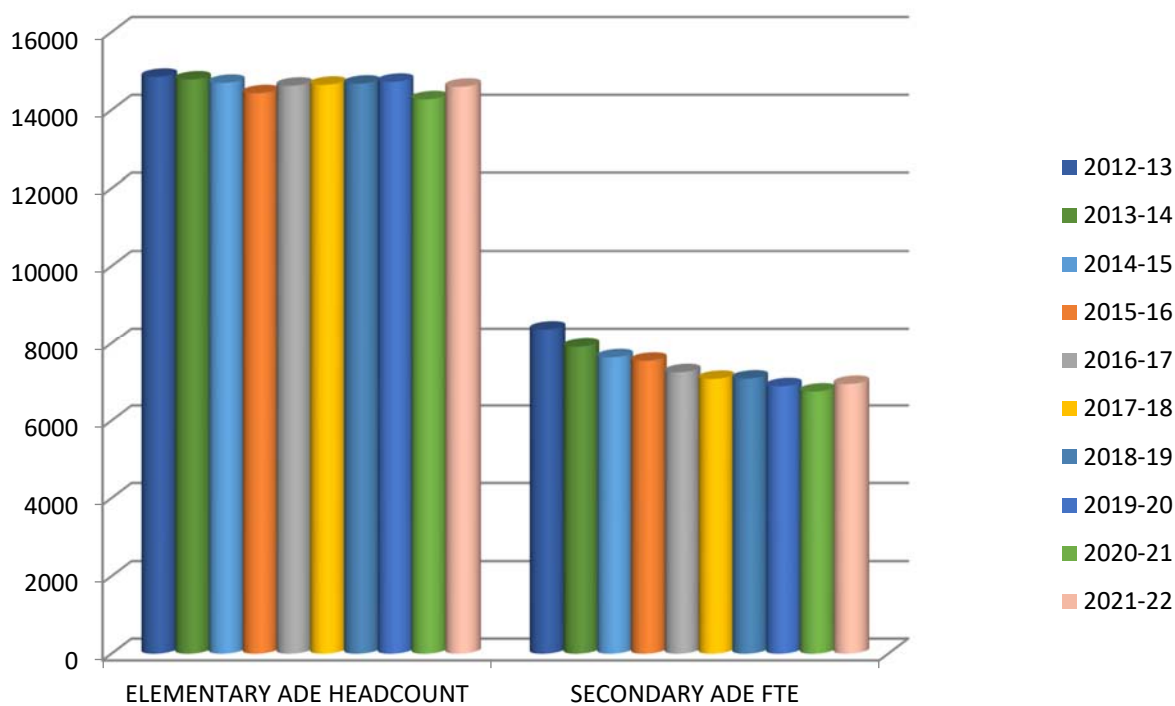
In the 2021/2022 school year there was a 7.23% decline in overall student population compared to enrolment ten years earlier in the 2012/2013 school year as outlined in the chart below. Enrolment in the LKDSB has experienced decline since amalgamation in 1998.

COMPARISON OF TOTAL STUDENT AVERAGE DAILY ENROLMENT BY HEADCOUNT

	2012-2013	2021-2022	Change	% Change
Elementary Enrolment	14,850	14,595	(255)	(1.71%)
Secondary Enrolment	8,367	6,944	(1,423)	(17.0%)
Totals	23,217	21,539	(1,678)	(7.23%)

In the 2021/2022 school year, our elementary enrolment increased by 323 students over the previous school year. Secondary enrolment increased by 196 students over the previous school year.

LKDSB TEN YEAR ENROLMENT HISTORY ACTUALS 2012-13 TO 2021-22



ADE - Average Daily Enrolment (October 31 & March 31 totals, divided by 2).
 FTE - Full Time Equivalency - Calculated based on number of credits in secondary student timetable (1 credit .25/2 credits .50/3 or more credits 1.00).

Current LKDSB Enrolment

Elementary enrolment as of October 31, 2022 was 14,881 students, which represents an increase of 286 students in comparison to the 2021/22 elementary average daily enrolment (ADE) of 14,595. ADE is calculated by averaging the total enrolment on the Ministry funding dates of October 31 and March 31 of the school year. It is important to note that in the 2021/2022 school year, elementary enrolment increased by 98 students on the March 31, 2022 Ministry funding date in comparison to the enrolment on October 31. Over the past three years, there has been a slight increase in elementary enrolment (average of 64 students) for the March 31 reporting date. In September 2022, additional registrants from other provinces, countries and school boards outside of the LKDSB catchment area are contributing factors to the enrolment increase, as well as students returning from home school.

As of October 31, 2022, six elementary schools have student populations under 150 students. Those schools are: Mooretown-Courtright Public School with 106 students; Zone Township Central School with 118 students; Dawn Euphemia Public School with 121 students; Aberarder Central School with 122 students; Bridgeview Public School with 135 students; and Riverview Central School with 146 students.

Secondary enrolment as of October 31, 2022 is 7,394 students, an increase of 333 students in comparison to enrolment on October 31, 2021. Secondary enrolment is projected to fluctuate over the next 10 years as a larger elementary class moves to secondary.

As of October 31, 2022, three of twelve secondary schools have current student populations under 400. Ridgetown District High School's Grade 9-12 enrolment with 117 students; Blenheim District High School with 221 students; followed by Tilbury District High School with 353 students.

Note 1: Of the TDHS 353 total students, 224 are regular day school program students and 129 are attached to the ACCESS program of which approximately 90 students are enrolled in the regular day school co-op program. Other ACCESS program students are enrolled in a combination of Supervised Alternative Learning (SAL), regular day school classes and online courses.

Note 2: Lambton Kent Composite School has been removed from this sub-400 student FTE list as the Virtual – Learning Program for Secondary Students has been tied to their location (BSID) for support and monitoring purposes. The regular day school in-person FTE is 241 students, and the Virtual FTE student count is 180.

This enrolment data may fluctuate based on additional student admissions and/or departures that will occur throughout the school year. It is also important to note that not all secondary students will be funded as full-time students.

Summary of Current Enrolment for the 2022/23 School Year

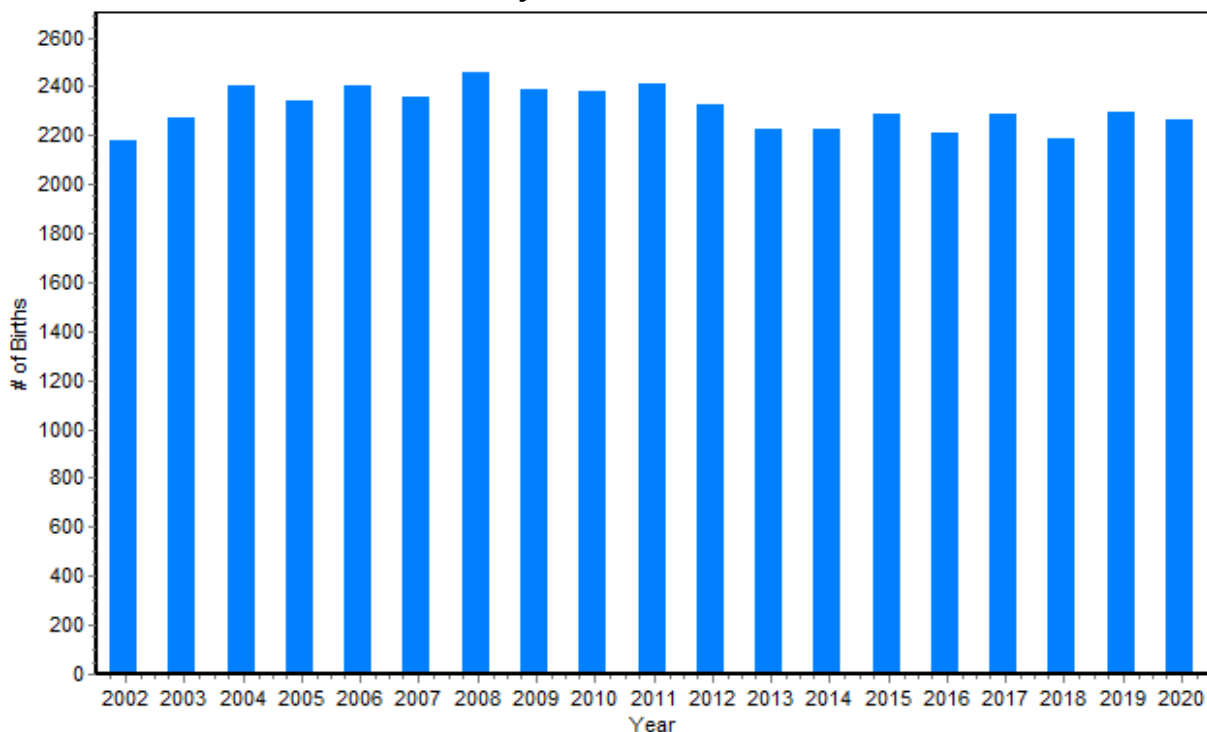
In 2021/2022, the LKDSB had 8,421 empty pupil spaces as of September 20, 2021, with a utilization rate of 72.07%.

For the 2022/23 school year, the LKDSB's total enrolment has increased from the September 20, 2021 enrolment of one year ago. As of October 31, 2022, there are 14,881 elementary students and 7,394 secondary students. The 2022/23 utilization rate of 74.16% has increased and the LKDSB has 7,761 empty pupil spaces.

Birth Rates

Birth data on a Board-wide basis for the period of 2002 to 2020 illustrates a range in the number of births. The birth graph below shows a relatively stable birth rate occurred from 2004 to 2012. In 2013 and 2014, the birth rate showed a more significant decline. An increase in the birth rate was experienced in 2015, 2017 and 2019. However, the decline continued in 2016 and 2018. The Board has remained consistent over the last 6 years; the number in 2018 marked the lowest on record since the year 2000.

Births by LKDSB Catchment Area

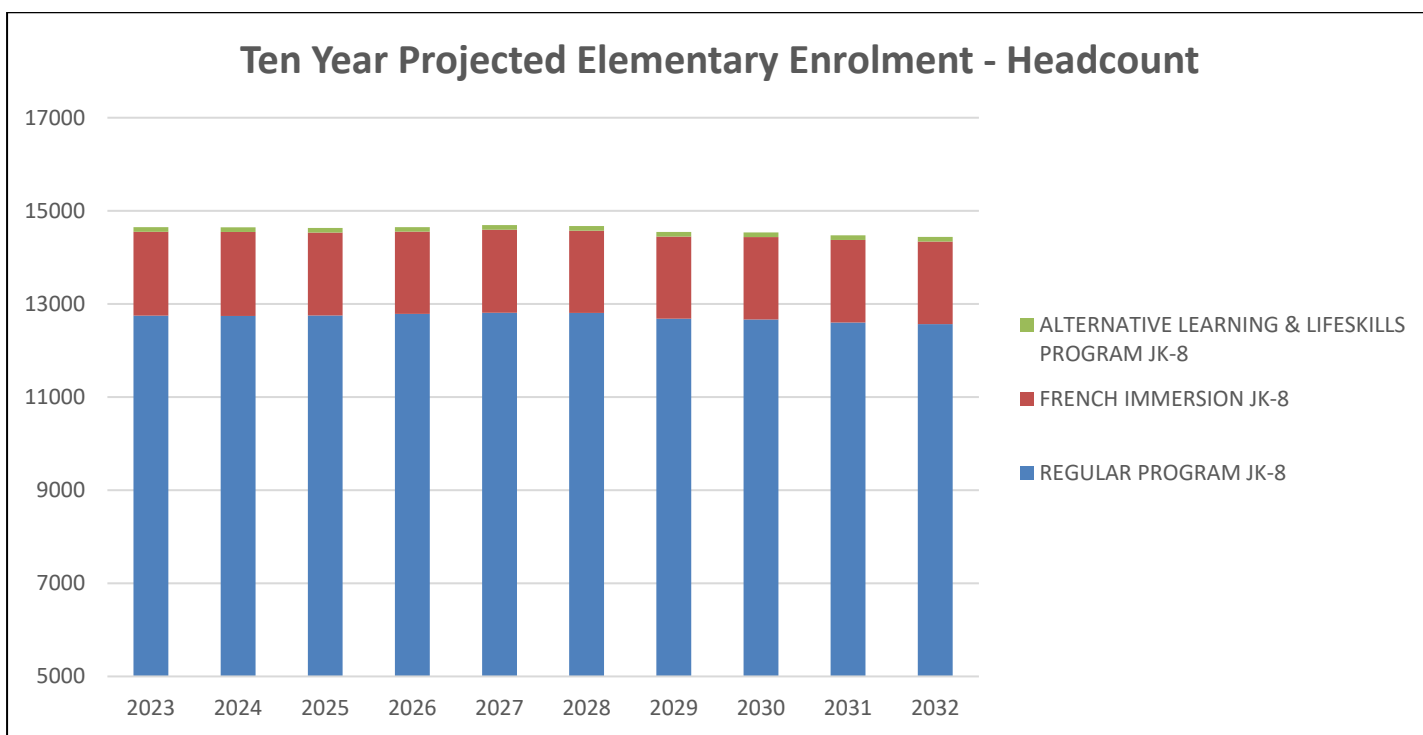


Data sources used by the Board's planning software to determine the birth rate include the Provincial Birth Registry, Canada Child Benefit information, and available Census data.

Provincial Birth Rate and LKDSB Catchment Area Birth Rate Assumptions have been removed from the projections. The 2016 Census is now 5 years old and is less valuable and outdated in terms of its accuracy. The 2021 Census data will be released over the course of this 2022 year, and new birth assumptions will be available for future projections. Given the stability in the number of births since 2013, the assumption made in this projection is that the number of births will remain similar.

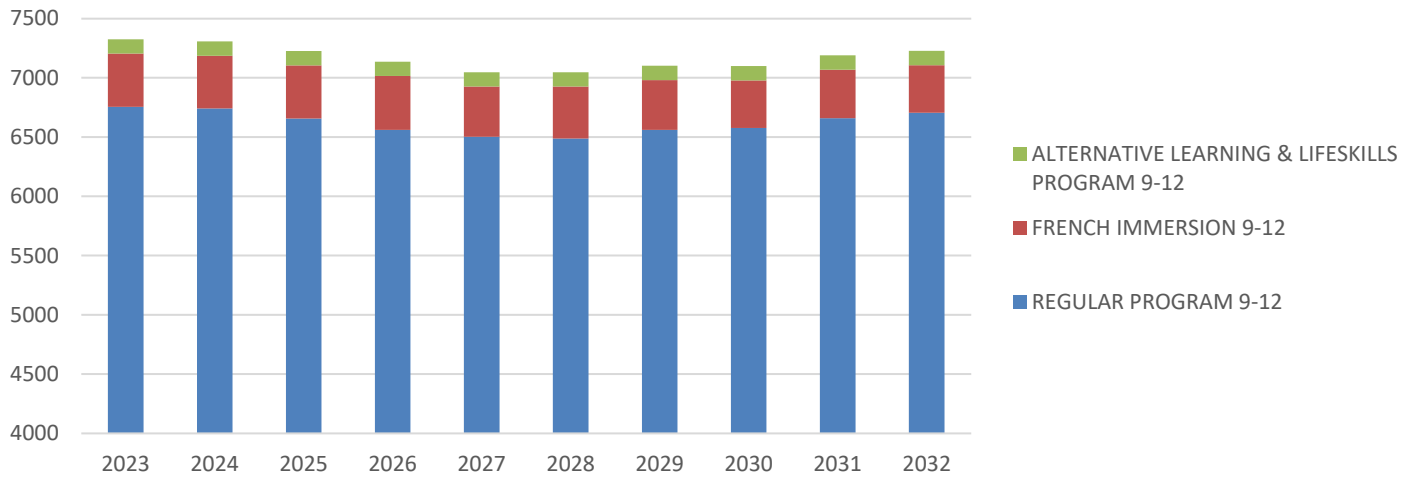
LKDSB Projected Enrolment

Elementary headcount is projected to continue to decline, but at a slower pace than was anticipated one year ago. In 2023, a high of 14,648 elementary aged students is projected. Ten years later, in 2032, the elementary enrolment projection is 14,438, a decline of 210 students. This projection would result in an average of twenty one less elementary students, per year, over the next ten years.



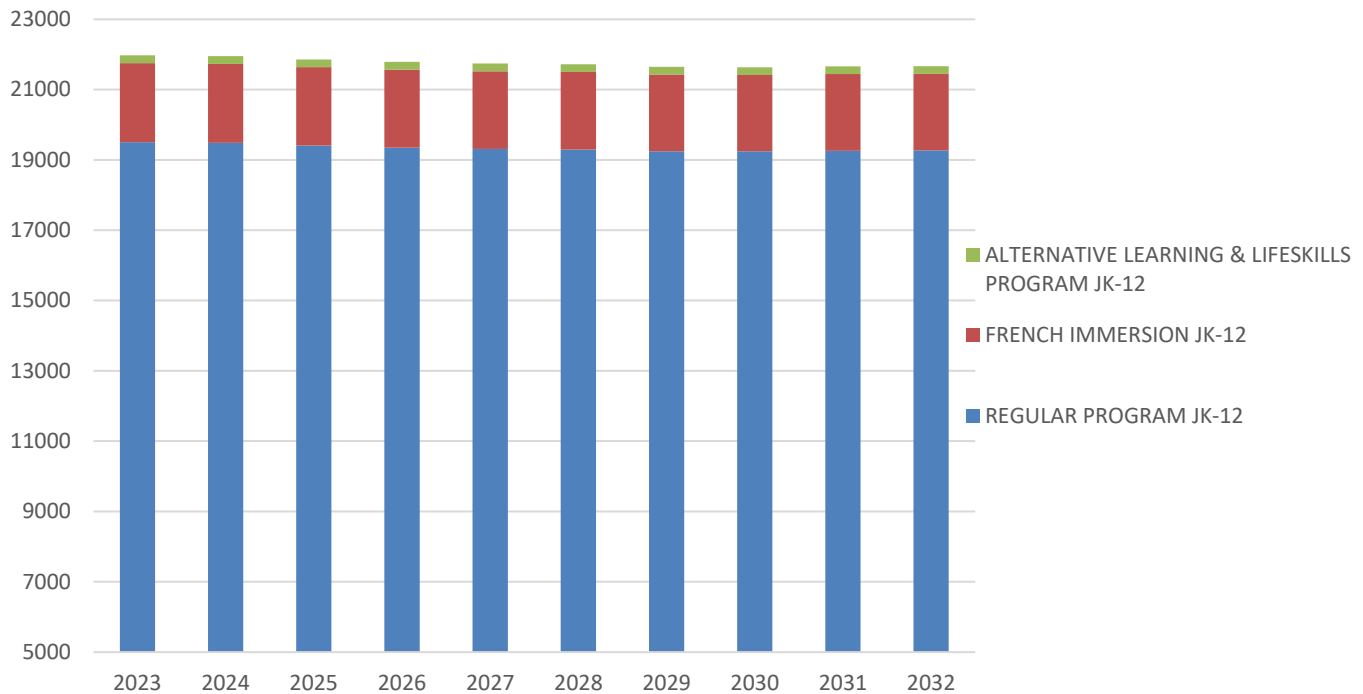
Secondary enrolment (under 21) is projected to fluctuate over the next ten years, due to larger elementary class moves to secondary. In 2032, an estimated headcount of 7,227 is projected, resulting in a decrease of 98 students over the 2023 projection of 7,325 total students. This includes projected student participation in the International Education Program. It is important to note that with secondary enrolment, not all students in this headcount will be funded as full-time students.

Ten Year Projected Secondary Enrolment - Headcount



Overall student enrolment in the LKDSB is projected to continue to decline, as outlined in the Projected Board Enrolment chart below.

Ten Year Projected Board Enrolment - Total Headcount



By 2032, projections indicate that the overall LKDSB enrolment is expected to decline by approximately 308 students.

- Enrolment for JK-Grade 8 is projected to decrease by 210 students;
- Enrolment for Grades 9-12 is projected to decrease by 98 students;
- Ministry-rated empty pupil spaces will be 8,485; and
- Capacity Utilization will be 71.86%.

Utilization Trends for the LKDSB

Average Capacity Determined by the Ministry of Education	Elementary	Secondary
LKDSB 2020/2021	74.0%	63.0%
LKDSB 2021/2022	76.5%	64.4%

LKDSB 2022/2023, as of October 31, 2022	78.5%	66.8%
---	-------	-------

Elementary Capacity Levels - Headcount - Current & Projections									
	Capacity	Oct 2022	October Enrolment Projections			Percentage Capacity			
		Actuals	2023	2024	2025	31-Oct-2022	2023	2024	2025
AA Wright	268	278	244	235	234	104%	91%	88%	87%
Aberarder	199	122	127	127	131	61%	64%	64%	66%
Bosanquet	328	188	199	198	195	57%	61%	60%	59%
Bridgeview	254	135	129	133	131	53%	51%	52%	52%
Brigden	305	184	173	172	171	60%	57%	56%	56%
Bright's Grove	378	344	322	316	327	91%	85%	84%	87%
Brooke Central	375	269	251	254	260	72%	67%	68%	69%
Cathcart Blvd	518	524	546	548	539	101%	105%	106%	104%
Colonel Cameron	340	243	250	240	249	71%	74%	71%	73%
Confederation	305	268	257	262	266	88%	84%	86%	87%
Dawn-Euphemia	256	121	111	106	110	47%	43%	41%	43%
Dresden	446	379	378	373	369	85%	85%	84%	83%
East Lambton	351	240	219	213	215	68%	62%	61%	61%
École Hillcrest	259	262	270	265	270	101%	104%	102%	104%
Errol Road	458	446	417	411	400	97%	91%	90%	87%
Errol Village	190	253	265	277	288	133%	139%	146%	152%
Grand Bend	248	274	276	285	282	110%	111%	115%	114%
Gregory Drive	374	275	265	265	269	74%	71%	71%	72%
Hanna Memorial	383	177	165	171	175	46%	43%	45%	46%
Harwich-Raleigh	581	339	353	346	344	58%	61%	60%	59%
High Park	530	479	392	389	396	90%	74%	73%	75%
HW Burgess	271	185	179	184	183	68%	66%	68%	68%
Indian Creek	643	635	625	632	617	99%	97%	98%	96%
King George VI-Chatham	340	297	268	258	252	87%	79%	76%	74%
King George VI-Sarnia	374	263	255	269	268	70%	68%	72%	72%
Kinnwood	331	314	309	307	306	95%	93%	93%	92%
Lakeroad	394	162	156	158	160	41%	40%	40%	41%
Lambton Centennial	337	214	219	220	225	64%	65%	65%	67%
Lansdowne	389	284	291	277	273	73%	75%	71%	70%
London Road	282	165	156	151	145	59%	55%	54%	51%
McNaughton ★	766	873	1138	1137	1127	114%	149%	148%	147%
Merlin	291	154	138	134	126	53%	47%	46%	43%
Mooretown	256	106	91	92	93	41%	36%	36%	36%
Naahii Ridge	375	289	264	268	261	77%	70%	71%	70%
PE McGibbon	530	502	509	516	529	95%	96%	97%	100%
Plympton-Wyoming	257	261	248	251	251	102%	96%	98%	98%
Queen E II - Chatham	442	303	280	285	280	69%	63%	64%	63%
Queen E II - Petrolia	397	349	337	336	352	88%	85%	85%	89%
Queen E II - Sarnia	475	241	256	260	263	51%	54%	55%	55%
RDHS Gr 7/8	92	71	75	79	75	77%	82%	86%	82%
Riverview	268	146	121	127	132	54%	45%	47%	49%
Rosedale	492	510	507	508	502	104%	103%	103%	102%
Sir John Moore	472	494	477	456	438	105%	101%	97%	93%
Tecumseh	559	539	470	475	479	96%	84%	85%	86%
Thamesville	199	161	141	146	149	81%	71%	73%	75%
Tilbury Area	470	323	296	288	292	69%	63%	61%	62%
Victor Lauriston	533	335	321	318	330	63%	60%	60%	62%
WDSS Gr 7/8	161	124	127	130	114	77%	79%	81%	71%
Wheatley	337	173	172	176	181	51%	51%	52%	54%
Winston Churchill	374	278	311	321	314	74%	83%	86%	84%
WJ Baird	291	212	189	192	188	73%	65%	66%	65%
Zone	219	118	113	107	105	54%	52%	49%	48%
Totals	18963	14881	14648	14644	14631	78%	77%	77%	77%

Please note that the Elementary Virtual Learning program has been moved to McNaughton PS as of the 2021-2022 school year. In-person FTE count is 753 pupils, as of October 31, 2022.

Secondary Capacity Levels - Headcount - Actuals & Projections									
	Capacity	Oct 2022 Actuals	October Enrolment Projections			Percentage Capacity			
			2023	2024	2025	31-Oct-2022	2023	2024	2025
AMSS	681	414	418	436	427	61%	61%	64%	63%
BDHS	768	221	210	208	201	29%	27%	27%	26%
CKSS	1293	1174	1115	1128	1144	91%	86%	87%	88%
GLSS	1113	964	869	902	867	87%	78%	81%	78%
JMSS	921	596	598	571	592	65%	65%	62%	64%
LCCVI	1185	832	818	813	783	70%	69%	69%	66%
LKCS ★	756	421	608	603	589	56%	80%	80%	78%
NCIVS	1341	1180	1196	1150	1130	88%	89%	86%	84%
NLSS	822	535	508	522	516	65%	62%	64%	63%
RDHS	495	117	141	130	137	24%	28%	26%	28%
TDHS ★	537	353	328	344	337	66%	61%	64%	63%
WDSS	1161	587	516	500	503	51%	44%	43%	43%
Totals	11073	7394	7325	7307	7226	67%	66%	66%	65%

AMSS	Alexander Mackenzie Secondary School	LKCS	Lambton Kent Composite School
BDHS	Blenheim District High School	NLSS	North Lambton Secondary School
CKSS	Chatham Kent Secondary School	NCIVS	Northern Collegiate Institute and Vocational School
GLSS	Great Lakes Secondary School	RDHS	Ridgetown District High School
JMSS	John McGregor Secondary School	TDHS	Tilbury District High School
LCCVI	Lambton Central Collegiate & Vocational Institute	WDSS	Wallaceburg District Secondary School

★ Please note that the Secondary Virtual Learning Program has been moved to Lambton Kent Composite School as of the 2021-2022 school year. In-person FTE count is 241 pupils as of October 31, 2022.

★ This figure includes approximately 129 students who are enrolled in the A.C.C.E.S.S. (Acquiring Current Curriculum Experience through Supervised Studies) Program at TDHS. This program supports students, primarily from low-German Mennonite families involved in seasonal work, in pursuing academic goals and achieving their O.S.S.D.

Financial Considerations

Strong fiscal management is an important component of Ontario's publicly funded education system. Ontario's Ministry of Education states, in their *Achieving Excellence: A Renewed Vision for Education in Ontario, 2015* that "public trust is built when the education system makes decisions based on evidence and research, and when it is seen as a good steward of public resources". This focus has led to changes in how the Ministry provided grant funding for education in the province. The LKDSB believes accountability is attained through open dialogue, transparency and fiscal responsibility. This includes effectively allocating resources in order to maximize impact on student learning at the school level.

Schools and the LKDSB Capital Replacement Program

The LKDSB currently operates a total of 62 school sites – 50 in the elementary panel and 12 in the secondary panel. Even though the Board spends its annual maintenance and capital improvement budgets, its buildings continue to deteriorate as they age. LKDSB is located within the Ministry of Education London Region in Ontario which encompasses Southwestern Ontario. The average age of school buildings within the LKDSB exceeds both that of the Provincial and Regional averages.

The LKDSB receives grant funding on an annual basis to carry out capital repair and maintenance program on school facilities. Capital projects are prioritized based on school need and condition. The capital needs and condition of the schools is used to calculate the Facility Condition Index (FCI). The FCI is a common facilities management benchmark that compares the relative condition of a group of facilities. The FCI compares the total cost of required capital work in LKDSB schools against the replacement value of those same schools. A facility with a high FCI would generally require a larger capital investment than a similar sized facility that has a lower

FCI. High FCI scores are generally found in older buildings. The following tables summarize FCI data for all LKDSB schools for a 5 Year and a 10 Year FCI calculation.

Lambton Kent District School Board					
5 Year Renewal Data and FCI Calculation as of November 8, 2022					
Asset Name	Gross Floor Area - sq.m.	Total Cost of Facility Work - 5 year period (\$)	Facility Replacement Value (\$)	5 Year Facility Condition Index (FCI)	Last Assessment Year
Tilbury District High School	7,632	\$15,551,010	\$16,103,685	96.57%	2020
Blenheim District High School	11,926	\$17,544,947	\$21,584,757	81.28%	2016
John McGregor Secondary School	13,643	\$19,994,851	\$26,508,088	75.43%	2020
London Road Public School	2,600	\$5,094,933	\$6,850,991	74.37%	2019
Ridgetown District High School	8,710	\$12,699,047	\$17,327,619	73.29%	2020
East Lambton Elementary School	4,163	\$6,080,774	\$8,626,422	70.49%	2016
W J Baird Public School	3,645	\$4,928,309	\$7,780,603	63.34%	2019
Alexander Mackenzie Secondary School	9,759	\$12,200,630	\$20,425,123	59.73%	2019
Lambton Kent Comp School	13,567	\$12,950,417	\$21,930,548	59.05%	2016
Kinnwood Central Public School	3,896	\$4,777,678	\$8,171,066	58.47%	2019
Dresden Area Central School	4,377	\$6,654,834	\$11,611,015	57.31%	2016
Brooke Central Public School	4,104	\$4,777,595	\$8,851,120	53.98%	2019
North Lambton Secondary School	9,359	\$13,448,255	\$24,997,507	53.80%	2019
Northern Collegiate Institute & Vocational School	17,916	\$20,179,331	\$37,788,718	53.40%	2019
Lakeroad Public School	2,962	\$4,790,028	\$8,992,866	53.26%	2019
Chatham-Kent Secondary School	17,424	\$19,810,691	\$38,389,890	51.60%	2016
Winston Churchill Public School	3,161	\$4,784,469	\$9,368,862	51.07%	2020
Mooretown-Courtright Public School	2,091	\$3,427,249	\$6,737,700	50.87%	2020
Lambton Central Collegiate & Vocational School	16,382	\$16,855,000	\$33,371,092	50.51%	2016
Bridgeview Public School	2,909	\$3,357,885	\$6,831,301	49.15%	2019
Naahii Ridge Public School	3,944	\$3,959,547	\$8,501,087	46.58%	2020
Errol Village Public School	1,872	\$2,615,975	\$5,642,239	46.36%	2019
Hanna Memorial Public School	3,320	\$4,042,907	\$8,915,639	45.35%	2020
Zone Township Central School	1,915	\$2,715,627	\$6,005,575	45.22%	2016
Queen Elizabeth II Public School	3,128	\$4,797,816	\$10,708,186	44.81%	2016
High Park Public School	4,161	\$5,204,955	\$11,905,758	43.72%	2020
Dawn Township Central School	1,958	\$2,840,672	\$6,737,700	42.16%	2020
Colonel Cameron Public School	3,005	\$3,586,292	\$8,539,692	42.00%	2020
Confederation Central School	2,331	\$3,044,899	\$7,600,937	40.06%	2019
Lambton Central Centennial School	3,078	\$3,382,881	\$8,565,193	39.50%	2019
Riverview Central School	2,379	\$3,359,773	\$8,604,291	39.05%	2019
Aberarder Central School	1,696	\$2,250,780	\$5,909,503	38.09%	2019
Lansdowne Public School	3,234	\$3,406,300	\$8,954,415	38.04%	2016

Gregory Drive Public School	3,153	\$3,559,643	\$9,368,862	37.99%	2016
King George VI Public School	2,864	\$3,268,187	\$8,657,631	37.75%	2016
Errol Road Public School	3,715	\$3,953,407	\$10,748,225	36.78%	2020
Rosedale Public School	3,581	\$3,790,594	\$10,878,743	34.84%	2016
Bosanquet Central Public School	2,769	\$2,761,101	\$7,956,557	34.70%	2019
Merlin Area Public School	2,512	\$2,850,245	\$8,274,294	34.45%	2016
Wallaceburg District Secondary School	17,606	\$12,809,872	\$37,403,811	34.25%	2020
Cathcart Boulevard Public School	3,828	\$3,958,038	\$12,039,850	32.87%	2020
King George VI Public School	2,640	\$2,614,006	\$7,973,586	32.78%	2016
Brigden Public School	2,332	\$2,422,138	\$7,529,230	32.17%	2019
Harwich-Raleigh Public School	5,100	\$4,628,192	\$14,495,046	31.93%	2019
McNaughton Ave Public School	5,816	\$4,881,326	\$15,691,220	31.11%	2019
Bright's Grove Elementary School	3,664	\$2,641,579	\$8,889,118	29.72%	2019
A A Wright Public School	2,978	\$2,023,060	\$6,933,157	29.18%	2020
H W Burgess Public School	2,245	\$2,023,483	\$6,945,023	29.14%	2020
Victor Lauriston Public School	3,852	\$3,150,399	\$11,506,426	27.38%	2016
Ecole Hillcrest Public School	2,240	\$1,878,835	\$6,960,833	26.99%	2020
Tilbury Area Public School	3,822	\$3,015,147	\$11,190,700	26.94%	2016
Thamesville Area Central School	1,737	\$1,687,254	\$6,262,795	26.94%	2016
Queen Elizabeth II Public School	3,961	\$2,388,865	\$10,522,964	22.70%	2020
Sir John Moore Community School	4,628	\$1,870,230	\$10,993,295	17.01%	2019
Grand Bend Public School	2,707	\$1,096,168	\$6,461,951	16.96%	2019
Wheatley Area Public School	3,077	\$1,518,777	\$9,512,834	15.97%	2019
Indian Creek Road Public School	5,832	\$2,151,369	\$14,294,526	15.05%	2016
Great Lakes Secondary School	14,049	\$5,083,589	\$34,136,362	14.89%	2020
Queen Elizabeth II Public School	3,554	\$930,804	\$9,816,661	9.48%	2020
Tecumseh Public School	5,945	\$722,134	\$12,243,630	5.90%	2020
Plympton-Wyoming Public School	2,942	\$377,472	\$7,275,952	5.19%	2020
P. E. McGibbon Public School	4,487	\$239,742	\$12,163,887	1.97%	2016
Summary		339,412,012	785,966,357	40.66%	

Lambton Kent District School Board

10 Year Renewal Data and FCI Calculation as of November 8, 2022

Asset Name	Gross Floor Area - sq.m.	Total Cost of Facility Work - 10 year period (\$)	Facility Replacement Value (\$)	10 Year Facility Condition Index (FCI)	Last Assessment Year
Blenheim District High School	11,926	\$25,248,713	\$21,584,757	116.97%	2016
Ridgetown District High School	8,710	\$18,155,034	\$17,327,619	104.78%	2020
Dresden Area Central School	4,377	\$11,863,451	\$11,611,015	102.17%	2016
East Lambton Elementary School	4,163	\$8,642,151	\$8,626,422	100.18%	2016
Tilbury District High School	7,632	\$16,018,774	\$16,103,685	99.47%	2020
John McGregor Secondary School	13,643	\$22,720,271	\$26,508,088	85.71%	2020
W J Baird Public School	3,645	\$6,394,081	\$7,780,603	82.18%	2019
Lambton Kent Comp School	13,567	\$17,994,829	\$21,930,548	82.05%	2016
Zone Township Central School	1,915	\$4,834,451	\$6,005,575	80.50%	2016
London Road Public School	2,600	\$5,510,984	\$6,850,991	80.44%	2019
Chatham-Kent Secondary School	17,424	\$29,934,761	\$38,389,890	77.98%	2016
Sir John Moore Community School	4,628	\$8,348,119	\$10,993,295	75.94%	2019
Winston Churchill Public School	3,161	\$6,799,789	\$9,368,862	72.58%	2020
Bridgeview Public School	2,909	\$4,928,180	\$6,831,301	72.14%	2019
King George VI Public School	2,640	\$5,714,038	\$7,973,586	71.66%	2016
Kinnwood Central Public School	3,896	\$5,716,393	\$8,171,066	69.96%	2019
Brooke Central Public School	4,104	\$6,118,593	\$8,851,120	69.13%	2019
North Lambton Secondary School	9,359	\$16,906,657	\$24,997,507	67.63%	2019
Lambton Central Collegiate & Vocational School	16,382	\$22,453,734	\$33,371,092	67.28%	2016
Mooretown-Courtright Public School	2,091	\$4,351,305	\$6,737,700	64.58%	2020
Northern Collegiate Institute & Vocational School	17,916	\$23,146,582	\$37,788,718	61.25%	2019
Alexander Mackenzie Secondary School	9,759	\$12,493,182	\$20,425,123	61.17%	2019
Lakeroad Public School	2,962	\$5,422,713	\$8,992,866	60.30%	2019
Queen Elizabeth II Public School	3,961	\$6,325,982	\$10,522,964	60.12%	2020
Colonel Cameron Public School	3,005	\$5,091,992	\$8,539,692	59.63%	2020
High Park Public School	4,161	\$7,039,092	\$11,905,758	59.12%	2020
Errol Village Public School	1,872	\$3,325,234	\$5,642,239	58.93%	2019
King George VI Public School	2,864	\$5,077,996	\$8,657,631	58.65%	2016
A A Wright Public School	2,978	\$3,821,339	\$6,933,157	55.12%	2020
Cathcart Boulevard Public School	3,828	\$6,589,101	\$12,039,850	54.73%	2020
Hanna Memorial Public School	3,320	\$4,792,593	\$8,915,639	53.75%	2020
Victor Lauriston Public School	3,852	\$6,137,373	\$11,506,426	53.34%	2016
Queen Elizabeth II Public School	3,128	\$5,636,195	\$10,708,186	52.63%	2016
Wallaceburg District Secondary School	17,606	\$19,101,048	\$37,403,811	51.07%	2020
H W Burgess Public School	2,245	\$3,541,242	\$6,945,023	50.99%	2020
Thamesville Area Central School	1,737	\$3,133,210	\$6,262,795	50.03%	2016
Lambton Central Centennial School	3,078	\$4,245,130	\$8,565,193	49.56%	2019
Errol Road Public School	3,715	\$5,224,746	\$10,748,225	48.61%	2020

Aberarder Central School	1,696	\$2,860,297	\$5,909,503	48.40%	2019
Lansdowne Public School	3,234	\$4,309,506	\$8,954,415	48.13%	2016
Naahii Ridge Public School	3,944	\$4,015,170	\$8,501,087	47.23%	2020
Dawn Township Central School	1,958	\$3,103,673	\$6,737,700	46.06%	2020
Confederation Central School	2,331	\$3,482,907	\$7,600,937	45.82%	2019
Riverview Central School	2,379	\$3,912,007	\$8,604,291	45.47%	2019
Gregory Drive Public School	3,153	\$4,220,014	\$9,368,862	45.04%	2016
Brigden Public School	2,332	\$3,279,313	\$7,529,230	43.55%	2019
McNaughton Ave Public School	5,816	\$6,806,759	\$15,691,220	43.38%	2019
Bosanquet Central Public School	2,769	\$3,324,412	\$7,956,557	41.78%	2019
Rosedale Public School	3,581	\$4,454,301	\$10,878,743	40.94%	2016
Merlin Area Public School	2,512	\$3,316,295	\$8,274,294	40.08%	2016
Bright's Grove Elementary School	3,664	\$3,521,412	\$8,889,118	39.61%	2019
Tecumseh Public School	5,945	\$4,713,174	\$12,243,630	38.49%	2020
Tilbury Area Public School	3,822	\$4,106,171	\$11,190,700	36.69%	2016
Harwich-Raleigh Public School	5,100	\$5,200,057	\$14,495,046	35.87%	2019
Queen Elizabeth II Public School	3,554	\$3,359,858	\$9,816,661	34.23%	2020
Ecole Hillcrest Public School	2,240	\$2,323,759	\$6,960,833	33.38%	2020
Grand Bend Public School	2,707	\$2,033,996	\$6,461,951	31.48%	2019
Wheatley Area Public School	3,077	\$2,913,828	\$9,512,834	30.63%	2019
Indian Creek Road Public School	5,832	\$3,820,311	\$14,294,526	26.73%	2016
P. E. McGibbon Public School	4,487	\$2,220,134	\$12,163,887	18.25%	2016
Great Lakes Secondary School	14,049	\$5,400,991	\$34,136,362	15.82%	2020
Plympton-Wyoming Public School	2,942	\$841,677	\$7,275,952	11.57%	2020
Summary		466,339,081	785,966,357	56.95%	

Capital Planning

The LKDSB's annual budget contains capital renewal funding, which is comprised of School Renewal Grants and School Condition Grants. Both of these grants are applied to the capital needs of the LKDSB's facilities in the following areas:

- Building Shell - including walls, foundation and roof;
- Building Site Work - including parking lots, sidewalks and playground asphalt;
- Building Systems - including heating, plumbing, electrical; and
- Interior Spaces - including classroom interiors.

Current annual funding is not sufficient to cover the current capital needs of the LKDSB, which is resulting in a sizable funding gap. Additions to LKDSB facilities may be funded from alternative Ministry of Education grants. These grants are application-based requiring the LKDSB to complete a separate application for each capital request. Each request is evaluated by the Ministry of Education, with only approved projects receiving funding. The LKDSB competes against other school boards for this application-based funding and can only submit projects when available funding programs are announced by the Ministry.

Detailed information on the Ministry Funding formula can be found at:
<https://files.ontario.ca/edu-2022-23-technical-paper-en-2022-03-15.pdf>

Proposed Pupil Accommodation Review Plan by Phases

Please note that this is not the start of a pupil accommodation review for the area. An Initial Staff Report has not been presented to Trustees for approval. Empty pupil spaces (EPS) is the difference between the school building's OTG (On the Ground) Ministry rated student capacity and the current actual full-time student enrollment. (See Appendix A)

Phase	Description of Consolidation	Notes
<p>Blenheim, Ridgetown Tilbury and South Chatham Area</p>	<p><u>Scenario 1:</u></p> <p>Construct a Kindergarten to Grade 12 School on either the Blenheim District High School site or Harwich Raleigh Public School site. [Projected reduction of 1201 empty pupil spaces- EPS]</p> <p>Close and relocate the students from:</p> <ul style="list-style-type: none"> a) Harwich Raleigh Public School (English Language and French Immersion Programs); b) W.J. Baird Public School; c) Ridgetown District High School Grade 7 and 8 Program; d) Ridgetown District High School and e) Blenheim District High School <p><u>Scenario 2:</u></p> <p>Construct a Grade 9 to Grade 12 Consolidated Secondary School at a site to be determined. [Projected reduction of 1324 EPS]</p> <p>Close and relocate the secondary students from:</p> <ul style="list-style-type: none"> a) Blenheim District High School; b) John McGregor Secondary School; c) Ridgetown District High School and d) Tilbury District High School <p>Relocate Ridgetown District High School Grade 7 and 8 students to Naahii Ridge Public School.</p> <p>Close W.J. Baird Public School and relocate students to Harwich Raleigh Public School in Blenheim. [Projected reduction of 79 EPS]</p>	<p>In spring 2017, the LKDSB invited its school communities to share their thoughts about the two proposed scenarios for the Blenheim, Ridgetown, Tilbury, and South Chatham Area phase of pupil accommodation, as identified in the <u>LKDSB Pupil Accommodation Report 2016/2017</u>.</p> <p>The Thoughtexchange process allowed participants to share their thoughts and prioritize the thoughts of others. The goal was to capture a sense of shared values and priorities in the community.</p> <p>A total of 748 individuals participated in the Thoughtexchange. Participants shared 3,653 thoughts and assigned 58,755 stars to their top priorities from across the LKDSB. Thoughtexchange assembled the results into an online report. Further information is available on the LKDSB website (www.lkdsb.net).</p> <p>Proposed Pupil Accommodation Review start date to be determined.</p>
<p>Sarnia Elementary</p>	<p>Construct a new elementary school on the property the LKDSB owns in Sherwood Village subdivision to house local students currently bused to King George VI (Sarnia), Lakeroad, Confederation Central, High Park and Errol Road Public Schools respectively.</p> <p>Close Confederation Central Public School [Projected reduction of 65 EPS] relocate students to:</p> <ul style="list-style-type: none"> a) the newly constructed school in Sherwood Village or b) Brigden Public School or c) Plympton-Wyoming Public School. <p>Close Queen Elizabeth II (Sarnia) Public School [Projected reduction of 220 EPS] and relocate students to:</p> <ul style="list-style-type: none"> a) High Park Public School or b) Lansdowne Public School. 	<p>In spring 2018 the LKDSB conducted an online community engagement/study (Thoughtexchange) of City of Sarnia elementary school stakeholders regarding the proposed plan for the City of Sarnia Elementary School phase of pupil accommodation, as identified in the LKDSB Pupil Accommodation Report 2017/2018.</p> <p>A total of 627 individuals participated in the Thoughtexchange. Participants shared 866 thoughts and assigned 13,115 stars to their top priorities from across the LKDSB. Thoughtexchange assembled the results into an online report. Further information is available</p>

Phase	Description of Consolidation	Notes
	<p>Close London Road Public School [Projected reduction of 116 EPS] and relocate students to Hanna Memorial Public School.</p> <p>Close Lakeroad Public School [Projected reduction of 221 EPS] and relocate students to:</p> <ul style="list-style-type: none"> a) the newly constructed school in Sherwood Village or b) King George VI (Sarnia) Public School or c) Cathcart Boulevard Public School. <p>Relocate the English Language Program students at Errol Road Public School to:</p> <ul style="list-style-type: none"> a) King George VI (Sarnia) Public School or b) Cathcart Boulevard Public School. <p>Relocate the French Immersion Programs at High Park Public School and Cathcart Blvd. Public School to a Single-Track site at Errol Road Public School. Construct an addition of approximately six classrooms at Errol Road Public School to accommodate students.</p>	<p>on the LKDSB website (www.lkdsb.net).</p> <p>Proposed Pupil Accommodation Review start date to be determined.</p>
<p>Corunna-Mooretown Area</p>	<p><u>Original Option:</u></p> <p>Close Mooretown-Courtright Public School and Colonel Cameron Public School. [Projected combined reduction of 299 EPS]</p> <p>Relocate students to:</p> <ul style="list-style-type: none"> a) Sir John Moore Community School or b) Riverview Central Public School. <p>Addition of 10 classrooms at Sir John Moore Community School site.</p> <p><u>Additional Option:</u></p> <p>Close Mooretown-Courtright Public School and consolidate students at Colonel Cameron Public School. [Projected reduction of 145 EPS]</p>	<p>Proposed Pupil Accommodation Review start date to be determined.</p>
<p>Dresden Area</p>	<p><u>Original Option:</u></p> <p>Reconfiguration of Lambton Kent Composite School (LKCS) into a Kindergarten to Grade 12 School.</p> <p>Close Dawn-Euphemia School [Projected reduction of 118 EPS] and relocate students to:</p> <ul style="list-style-type: none"> a) Lambton Central Centennial School or b) Brooke Central Public School or c) The new Lambton Kent Composite School Kindergarten to Grade 12 School or d) Brigden Public School or e) H.W. Burgess Public School <p>Close Zone Township Central School [Projected reduction of 98 EPS] and relocate students to Thamesville Area Central School.</p> <p>Close Dresden Area Central School [Projected reduction of 56 EPS] and relocate students to the reconfigured Kindergarten to Grade 12 School at Lambton Kent Composite School.</p>	<p>Proposed Pupil Accommodation Review start date to be determined.</p>

Phase	Description of Consolidation	Notes
	<p><u>Additional Option:</u></p> <p>Close Dresden Area Central School [Projected reduction of 56 EPS] and relocate students to a reconfigured Kindergarten to Grade 8 school at the Lambton Kent Composite School site.</p> <p>Relocate Grade 9-12 Lambton Kent Composite School [Projected reduction of 508 EPS] students to:</p> <ul style="list-style-type: none"> a) Chatham-Kent Secondary School or b) Lambton Central Collegiate Vocational Institute or c) Wallaceburg District Secondary School <p>Close Dawn-Euphemia School [Projected reduction of 118 EPS] and relocate students to:</p> <ul style="list-style-type: none"> a) Lambton Central Centennial School or b) Brooke Central Public School or c) The reconfigured Kindergarten to Grade 8 school at the Lambton Kent Composite School site or d) Brigden Public School or e) H.W. Burgess Public School <p>Close Zone Township Central School [Projected reduction of 98 EPS] and relocate students to Thamesville Area Central School.</p>	