



News Release

200 Wellington Street, Sarnia, N7T 7L2 (519) 336-1500

www.lkdsb.net

EQAO Grade 9 Mathematics Results

The Lambton Kent District School Board today released system-wide results for the 2008 – 2009 Grade 9 EQAO Assessment of Mathematics. Grade 9 students in all publicly funded secondary schools in Ontario studying mathematics at either the Applied or Academic level wrote the assessment designed for their level of study. The number of Academic students who meet or exceed the provincial standard improved 1% to 75% from 2007-08. The number of Applied students who meet or exceed the provincial standard improved 5% to 42% from 2007-08. The percentage of Lambton Kent District School Board Applied students achieving at or above the provincial standard now exceeds the provincial average.

In the Lambton Kent District School Board, 99% of all students in the Academic Program achieved a passable level with 76% achieving the provincial standard or higher an increase of 1%. In the Applied Program, 92% of all students achieved a passable level of achievement with 42% achieving the provincial standard. An increase of 2% was seen in the percentage of Applied students who were able to achieve a passable level of achievement while the percentage of students who achieved the provincial standard or higher increased 5%. The Ministry of Education identifies Level 1 as a “passable” level of achievement on the Grade 9 Assessment of Mathematics with Level 3 being the “provincial standard”.

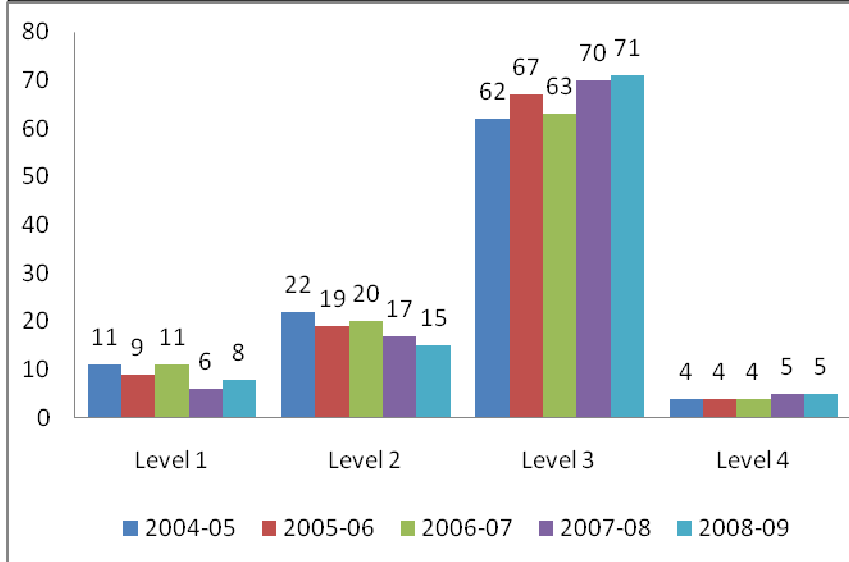
Gayle Stucke, Director of Education, stated, “Our students’ improvement in Mathematics will form the foundation for our planning and goal-setting activities. Our students’ achievement is the result of our teachers’ concerted efforts in implementing proven learning strategies.”

While the Grade 9 Mathematics Assessment is a snapshot of student performance at a specific point in time, Bert Phillips, Superintendent of Education, remarked, “Our student results continue to improve as teachers and administrators continue focused work based on student data. These results form a solid foundation upon which future successes can be built.”

The assessment for first semester mathematics students was administered during the January 2009 time period. Students studying mathematics in the second semester and those in full-year courses wrote the assessment during the June 2009 time period.

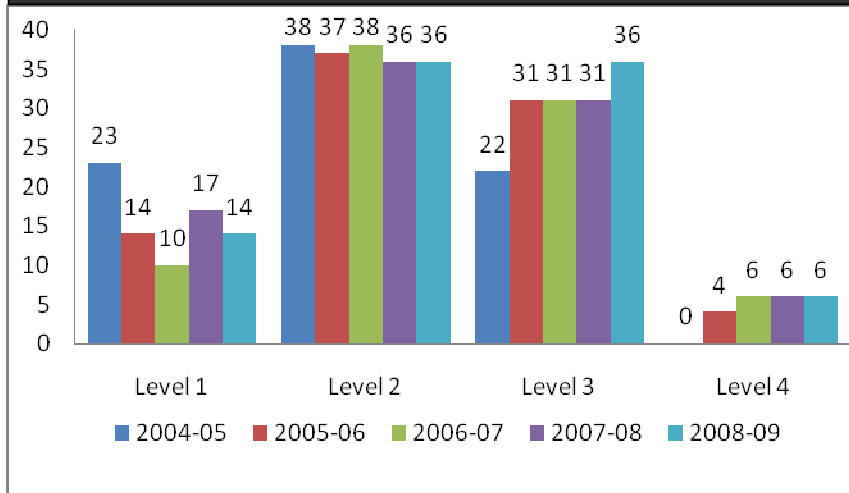
Academic Students

Percentage of All Students at Each Performance



Applied Students

Percentage of All Students at Each Performance Level*



*Provincial Standard: Level 3