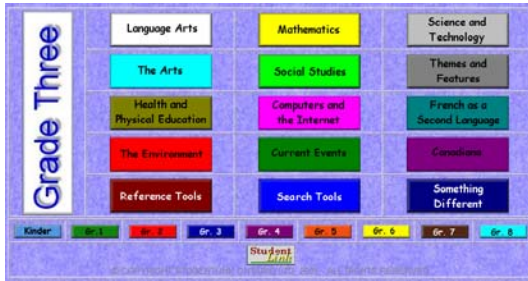


Access StudentLink Websites at Home

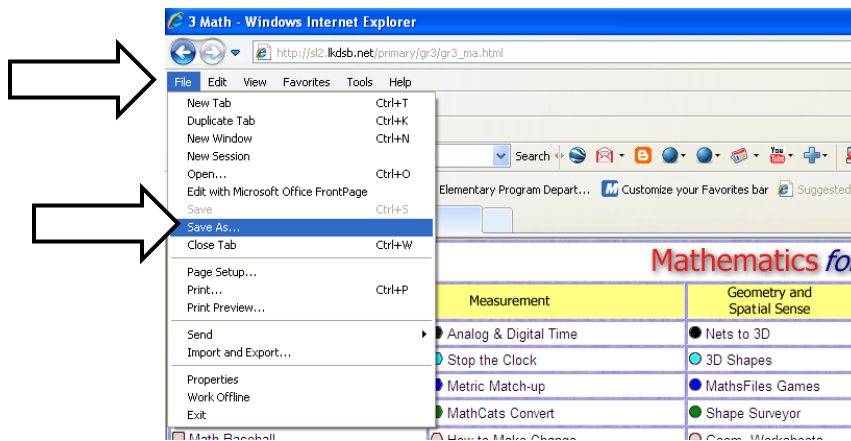
1. While on the board network, go to StudentLink.
2. Select the desired grade and then subject area.



Mathematics for Grade 3*				Grade ▾
Number Sense and Numeration	Measurement	Geometry and Spatial Sense	Patterning and Algebra	Data Management and Probability
ArithmAttack	Analog & Digital Time	Nets to 3D	Buttons	Math Arcade
Math Magic	Stop the Clock	3D Shapes	Pattern & Sequence	Pictographs
Counting Change	Metric Match-up	MathsFiles Games	Number Line	Venn Diagrams
Nelson Math Gr. 3	MathCats Convert	Shape Surveyor	Border Patterns	Tennis Anyone?
Math Baseball	How to Make Change	Geom. Worksheets	Weather Patterns	Snack Attack
Multiplication Table	Shopping for Toys	Geometry Thru Art	Mask Task	Make It Safe
Fractions Matching	Perimeter/Area	Tessellation Town	The Pattern Machine	Go Fish
Multiply	BasketMath Interact.	Traffic Signs	Number Cracker	Gadgets & Gizmos
AAA Math (Gr. 3)	Tall Teddy Bears	Symmetry	Tangrams	Term Glossary
Avoid the Asteroid!	Teaching Time	Exploring Shapes	Pizza Word Problem	Gr. 3 Practice Test
NLVM Numbers	NLVM Measurement	NLVM Geometry	NLVM Algebra	NLVM Data Manage
Venn Diagram Quiz	Figure This!	Perimeter Explorer	Pattern Farm	The Pie Chart
Grade 3 Worksheets	E-Lab Grade 3	MathCats	MathStax	Candy Math
Math Dictionary	World of Measurement	Shapes, Space, etc.	PBS Kids Math	Reading Grids
Guess the Number	Measures Skills	Bathroom Tiles	Math is Fun	Visual Fractions

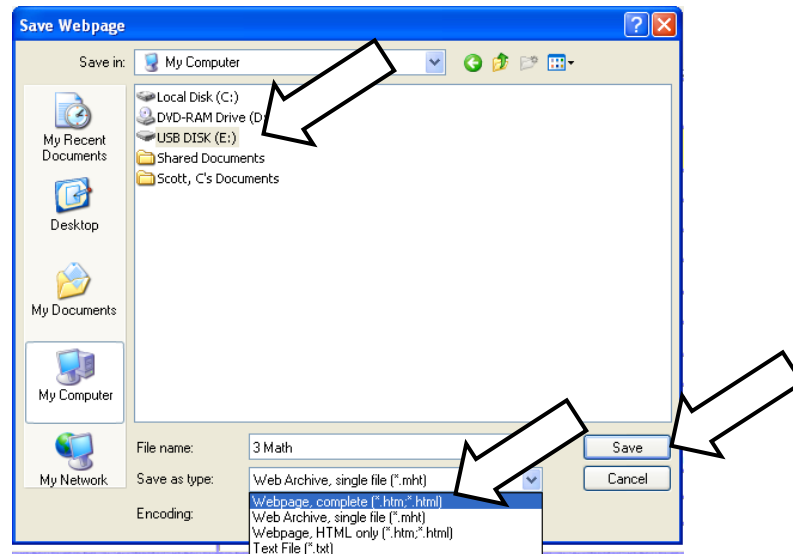
↑ Bitesize Maths
© Copyright StudentLink Canada Ltd. 2009 All Rights Reserved.

3. From the Internet browser, click File and then 'Save as'.

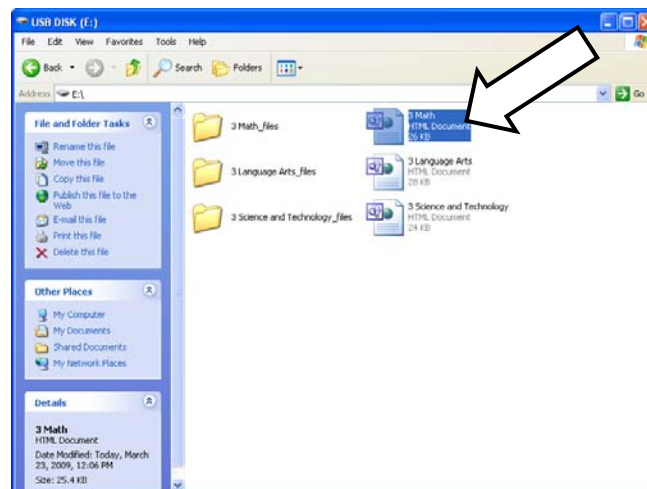


4. In the Save Webpage window, select the USB drive (memory stick, removable storage, etc.). The File name will be assigned automatically, but can be changed

if you wish. Use the 'Save as type' dropdown to select **Webpage, complete, (*.htm, *.html)**. Click Save.



5. Repeat for each subject area you wish to access at home.
6. On your home computer, access the USB drive and open the desired web page. Your internet browser will open automatically to the StudentLink page you saved at school



Note: StudentLink is essentially a collection of links. You will need to re-save after a monthly update, to access the **new** websites added to StudentLink on the school network.