



**Lambton Kent**  
District School Board  
*Student Achievement* ✓ *Community Success*

# **Petrolia Family of Schools Pupil Accommodation Review**

**November 12, 2009**



# **Welcome and Introduction of Members**



## **Board Policy P-AD-106-09**

**“It is the policy of the Lambton Kent District School Board to operate and maintain its schools as effectively and efficiently as possible to support student achievement while exploring all opportunities to enhance the learning environment.”**



## **Establishment of Accommodation Review Committee (ARC)**

**The Accommodation Review Committee (ARC) membership includes the following from each school:**

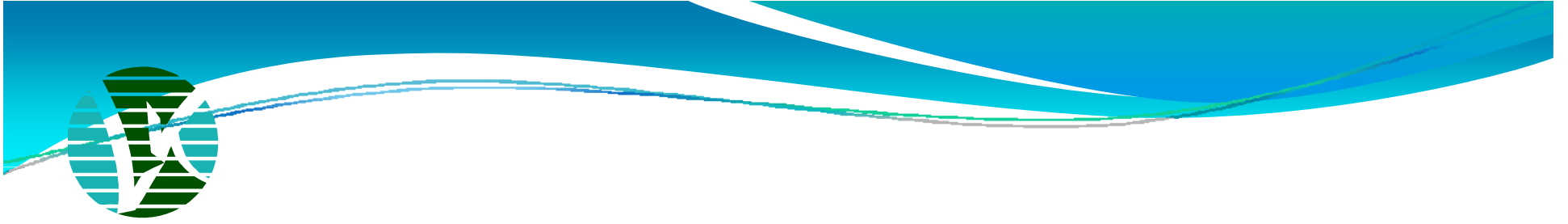
- a parent**
- a school administrator**
- a community representative**
- a municipal partner representative**
- a First Nations representative if appropriate**
- the Board's Planning and Reporting Officer**

**The Director or designated Superintendent facilitates and chairs ARC meetings. Trustees will attend as observers.**

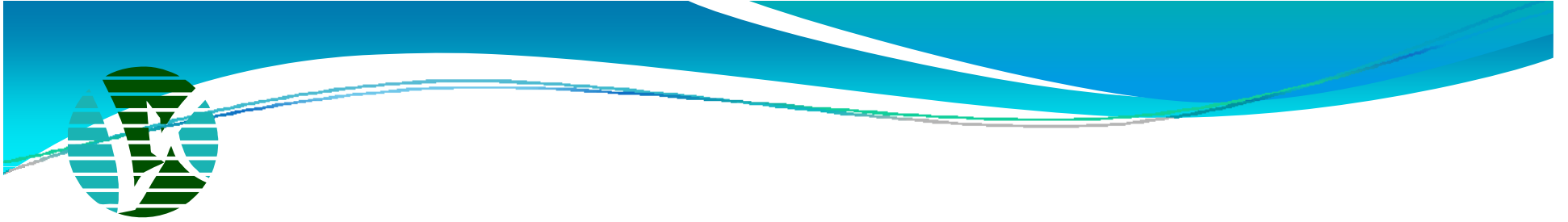


# **Role of the Accommodation Review Committee**

**The Accommodation Review Committee (ARC) analyzes School Information Profiles, considers alternatives and makes recommendations that meet the educational and accommodation objectives of the Lambton Kent District School Board. Throughout the process the ARC consults with community members and provides opportunity for input into the analysis.**



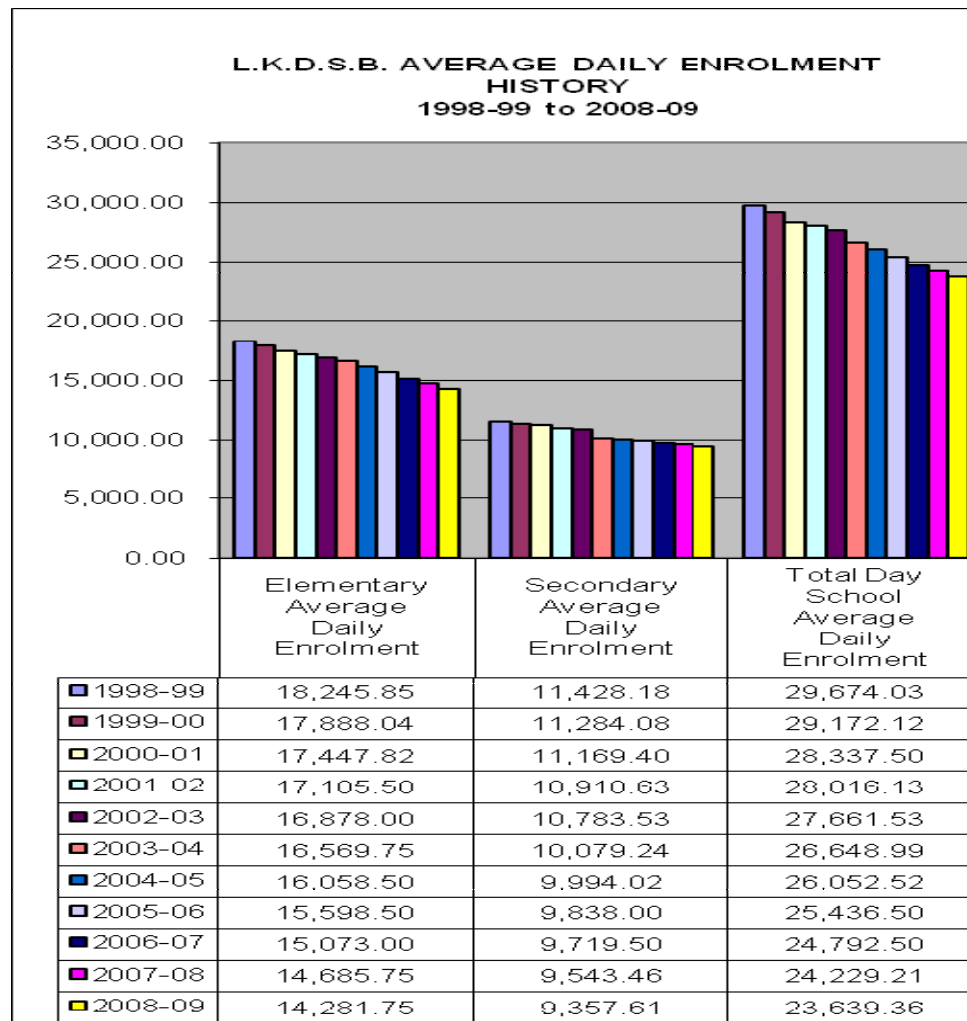
# **School Information Profiles**



**DEMOGRAPHIC  
TRENDS OF THE  
LAMBTON KENT  
DISTRICT SCHOOL  
BOARD**



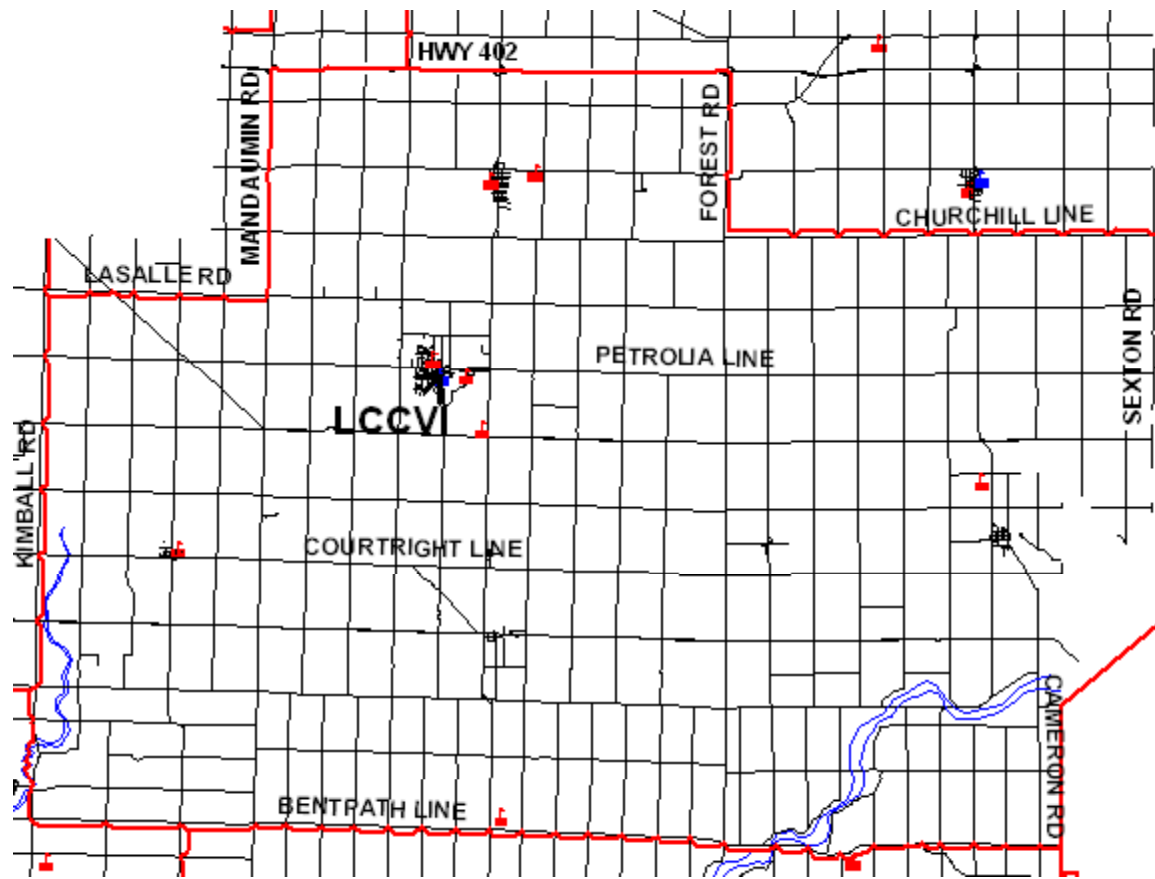
# L.K.D.S.B. AVERAGE DAILY ENROLMENT HISTORY 1998-99 to 2008-09





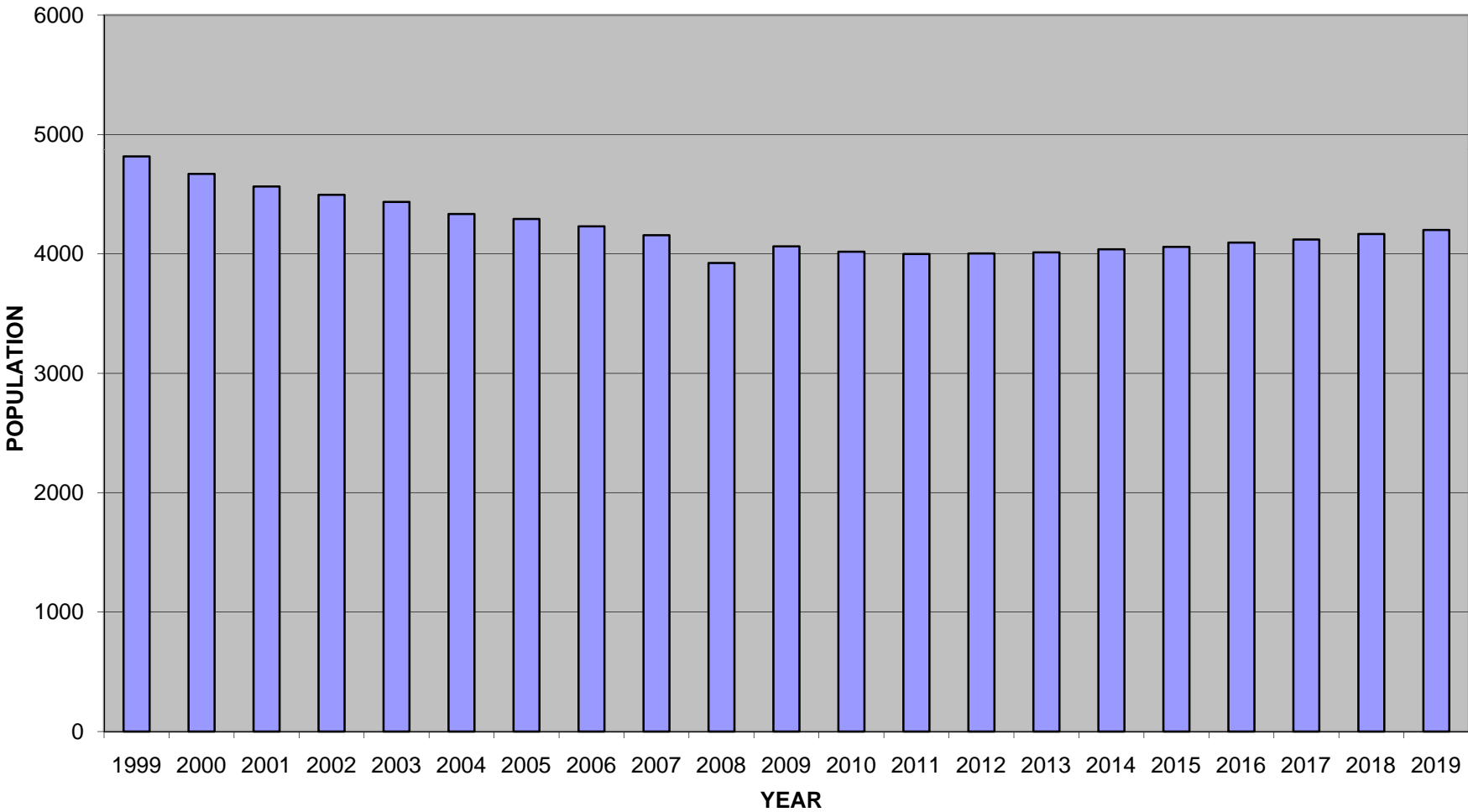
# **DEMOGRAPHIC TRENDS OF THE PETROLIA FAMILY OF SCHOOLS**

# LCCVI AREA CATCHMENT MAP





# HISTORY AND PROJECTION OF CHILDREN LIVING IN THE L.C.C.V.I. CATCHMENT AREA - AGES 1 TO 18

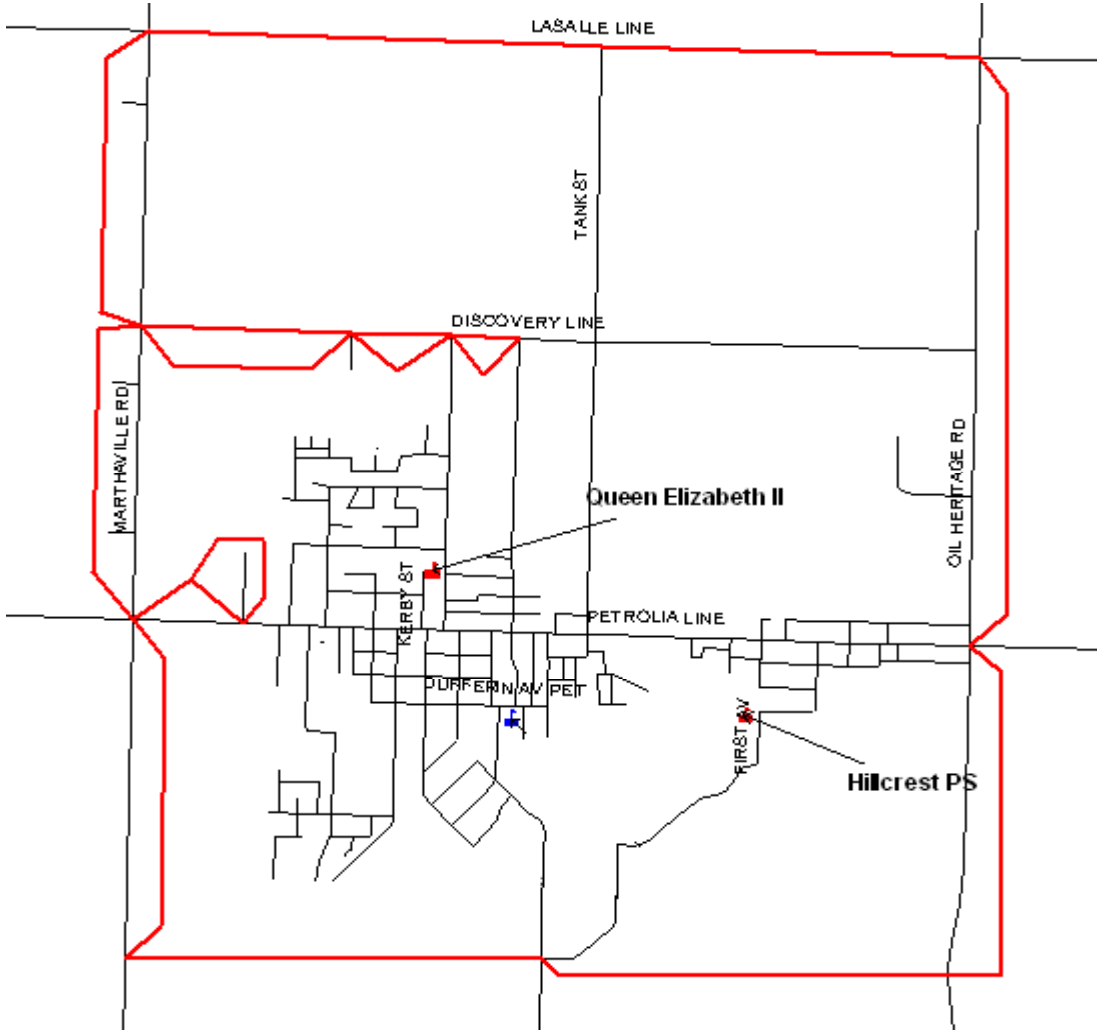


## ENROLMENT HISTORY AND PROJECTIONS

### LAMBTON CENTRAL C.V.I.

	Oct. 2004	Oct. 2005	Oct. 2006	Oct. 2007	Oct. 2008	Oct. 2009	Proj. 2010	Proj. 2011	Proj. 2012	Proj. 2013	Proj. 2014
<b>1218</b>											
<b>Gr. 9</b>	250	266	258	249	248	224	222	228	217	216	213
<b>Gr. 10</b>	290	256	263	260	251	249	231	224	230	219	219
<b>Gr. 11</b>	282	297	260	266	253	255	247	230	224	230	219
<b>Gr. 12</b>	373	367	379	358	332	324	320	317	300	294	300
<b>SPEC.</b>	17	18	17	18	18	21	20	20	20	20	20
<b>Totals</b>	<b>1212</b>	<b>1204</b>	<b>1177</b>	<b>1151</b>	<b>1102</b>	<b>1073</b>	<b>1040</b>	<b>1019</b>	<b>991</b>	<b>979</b>	<b>971</b>
<b>F.T.E.</b>	<b>1210.00</b>	<b>1203.00</b>	<b>1174.50</b>	<b>1147.00</b>	<b>1099.50</b>	<b>1073.00</b>	<b>1040.00</b>	<b>1019.00</b>	<b>991.00</b>	<b>979.00</b>	<b>971.00</b>
<b>%Full</b>	<b>99.34%</b>	<b>98.77%</b>	<b>96.43%</b>	<b>94.17%</b>	<b>90.27%</b>	<b>88.10%</b>	<b>85.39%</b>	<b>83.66%</b>	<b>81.36%</b>	<b>80.38%</b>	<b>79.72%</b>

# HILLCREST & QUEEN ELIZABETH II AREA CATCHMENT MAP





## School Catchment Area for Students Attending French Immersion Programs at Hillcrest and Queen Elizabeth II

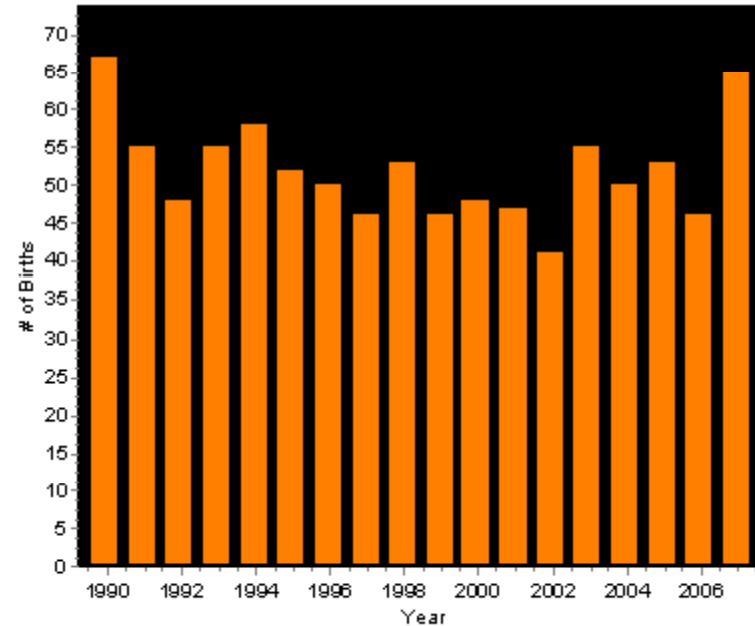
- Brigden
- Dawn Euphemia (some students)
  - Hillcrest
- Lambton Centennial
- Queen Elizabeth II
  - South Plympton
  - Wyoming

# HILLCREST DEMOGRAPHICS

10 YEAR BIRTH RATE HISTORY

YEAR	BIRTHS	INCREASE/DECREASE
1997	46	
1998	53	7
1999	46	-7
2000	48	2
2001	47	-1
2002	41	-6
2003	55	14
2004	50	-5
2005	53	3
2006	46	-7
2007	65	19

Births: Hillcrest Public School (gr jk-3)



*Change in School Age Population Last Year*

	Age 1 to 4	Age 5 to 8	Age 9 to 12	Age 13 to 16	Total Pop. Change (%)
Hillcrest	7.0%	0.9%	-0.8%	-4.3%	0.3%

## ENROLMENT HISTORY AND PROJECTIONS

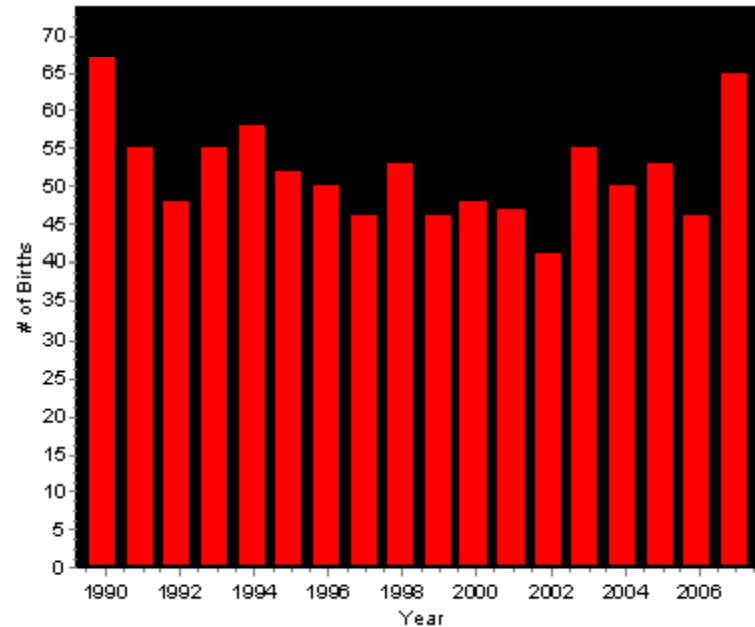
<b>HILLCREST/QUEEN E</b>				<b>HILLCREST PUBLIC SCHOOL</b>							
<b>213</b>	<b>Oct. 2004</b>	<b>Oct. 2005</b>	<b>Oct. 2006</b>	<b>Oct. 2007</b>	<b>Oct. 2008</b>	<b>Oct. 2009</b>	<b>Proj. 2010</b>	<b>Proj. 2011</b>	<b>Proj. 2012</b>	<b>Proj. 2013</b>	<b>Proj. 2014</b>
<b>JK</b>	47	46	46	56	64	62	63	71	67	69	75
<b>SK</b>	60	53	46	50	56	68	65	65	73	69	70
<b>GR.1</b>	63	59	60	49	48	65	68	65	65	73	69
<b>GR.2</b>	52	60	59	58	52	52	65	67	65	65	73
<b>GR.3</b>	44	51	61	42	58	50	52	65	67	65	65
<b>GR.4</b>	43	47	57								
<b>GR.5</b>	52	46	45								
<b>GR.6</b>	63	52	47								
<b>GR.7</b>	51	60	52								
<b>GR.8</b>	59	55	59								
<b>SPEC.</b>											
<b>Totals</b>	<b>534</b>	<b>529</b>	<b>532</b>	<b>255</b>	<b>278</b>	<b>297</b>	<b>313</b>	<b>333</b>	<b>337</b>	<b>341</b>	<b>352</b>
<b>F.T.E.</b>	<b>480.50</b>	<b>479.50</b>	<b>486.00</b>	<b>202.00</b>	<b>218.00</b>	<b>232.00</b>	<b>249.00</b>	<b>265.00</b>	<b>267.00</b>	<b>272.00</b>	<b>279.50</b>
<b>%Full</b>	<b>98.46%</b>	<b>98.26%</b>	<b>99.59%</b>	<b>94.84%</b>	<b>102.35%</b>	<b>108.92%</b>	<b>116.90%</b>	<b>124.41%</b>	<b>125.35%</b>	<b>127.70%</b>	<b>131.22%</b>

# QUEEN ELIZABETH II DEMOGRAPHICS

10 YEAR BIRTH RATE HISTORY

YEAR	BIRTHS	INCREASE/DECREASE
1997	46	
1998	53	7
1999	46	-7
2000	48	2
2001	47	-1
2002	41	-6
2003	55	14
2004	50	-5
2005	53	3
2006	46	-7
2007	65	19

Births: Queen Elizabeth II (gr 4-8)



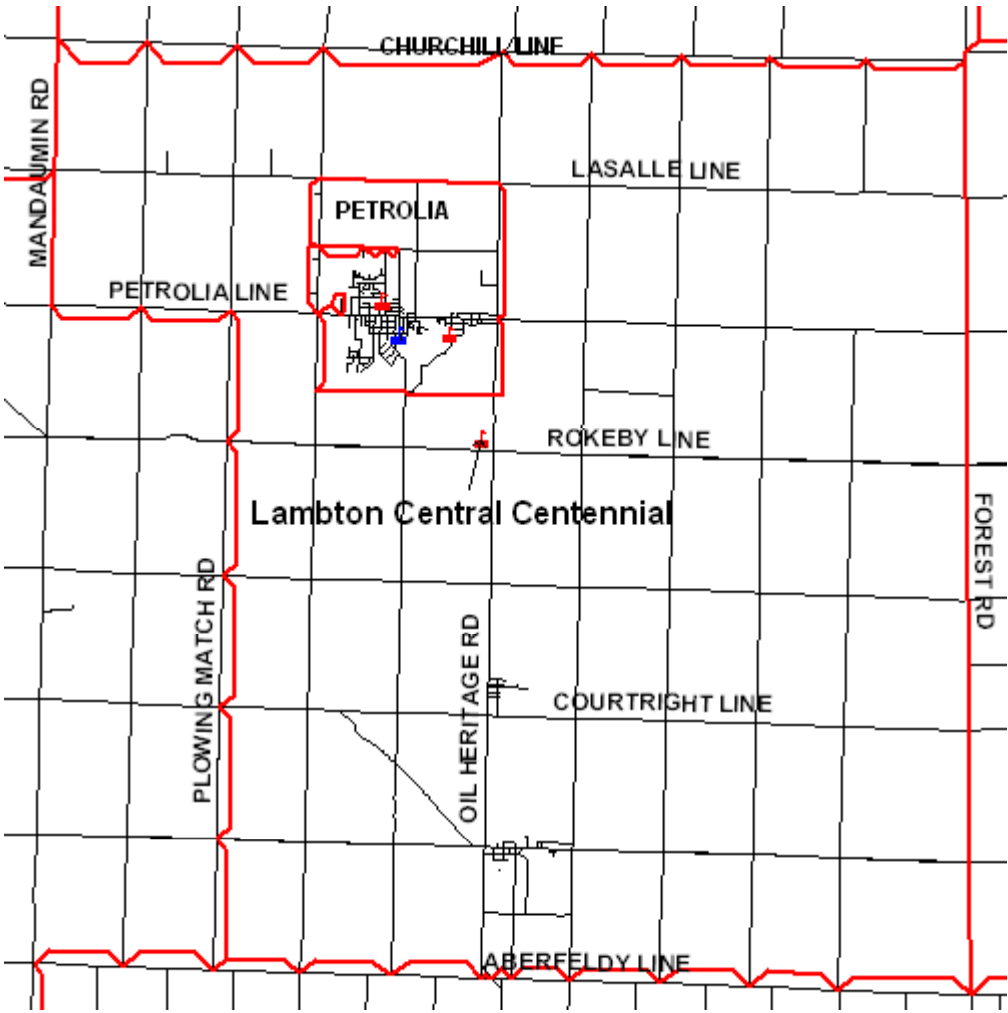
*Change in School Age Population Last Year*

	Age 1 to 4	Age 5 to 8	Age 9 to 12	Age 13 to 16	Total Pop. Change (%)
Queen Elizabeth II Petrolia	7.0%	0.9%	-0.8%	-4.3%	0.3%

## ENROLMENT HISTORY AND PROJECTIONS

<b>HILLCREST/QUEEN E</b>				<b>QUEEN ELIZABETH II - PETROLIA</b>							
	Oct. 2004	Oct. 2005	Oct. 2006	Oct. 2007	Oct. 2008	Oct. 2009	Proj. 2010	Proj. 2011	Proj. 2012	Proj. 2013	Proj. 2014
<b>253</b>											
<b>JK</b>	47	46	46								
<b>SK</b>	60	53	46								
<b>GR.1</b>	63	59	60								
<b>GR.2</b>	52	60	59								
<b>GR.3</b>	44	51	61	13							
<b>GR.4</b>	43	47	57	63	55	57	51	49	65	63	68
<b>GR.5</b>	52	46	45	62	60	56	57	51	50	65	63
<b>GR.6</b>	63	52	47	47	60	60	56	57	51	50	60
<b>GR.7</b>	51	60	52	52	48	56	60	55	58	51	51
<b>GR.8</b>	59	55	59	52	51	53	55	60	54	58	51
<b>SPEC.</b>											
<b>Totals</b>	<b>534</b>	<b>529</b>	<b>532</b>	<b>289</b>	<b>274</b>	<b>282</b>	<b>279</b>	<b>272</b>	<b>278</b>	<b>287</b>	<b>293</b>
<b>F.T.E.</b>	<b>480.50</b>	<b>479.50</b>	<b>486.00</b>	<b>289.00</b>	<b>274.00</b>	<b>282.00</b>	<b>279.00</b>	<b>272.00</b>	<b>278.00</b>	<b>287.00</b>	<b>293.00</b>
<b>%Full</b>	<b>98.46%</b>	<b>98.26%</b>	<b>99.59%</b>	<b>114.23%</b>	<b>108.30%</b>	<b>111.46%</b>	<b>110.28%</b>	<b>107.51%</b>	<b>109.88%</b>	<b>113.44%</b>	<b>115.81%</b>

# LAMBTON CENTRAL CENTENNIAL AREA CATCHMENT MAP

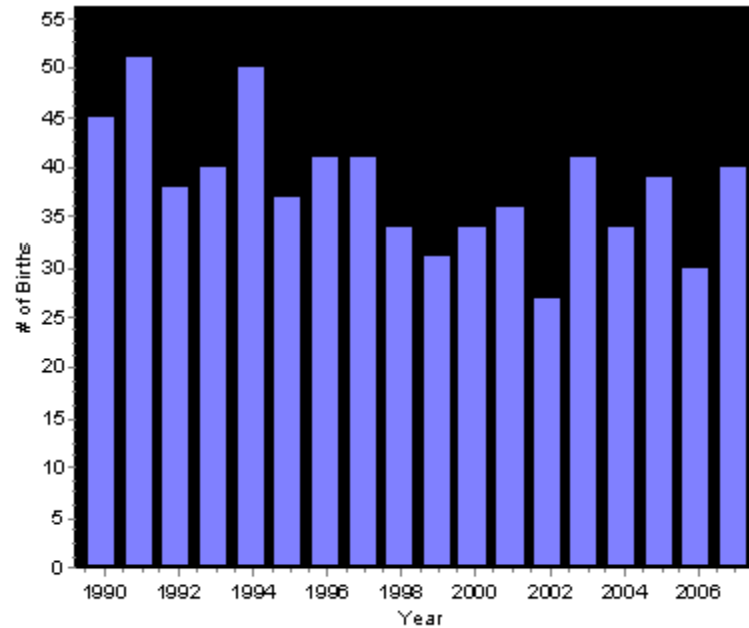


# LAMBTON CENTENNIAL DEMOGRAPHICS

10 YEAR BIRTH RATE HISTORY

YEAR	BIRTHS	INCREASE/DECREASE
1997	41	
1998	34	-7
1999	31	-3
2000	34	3
2001	36	2
2002	27	-9
2003	41	14
2004	34	-7
2005	39	5
2006	30	-9
2007	40	10

Births: Lambton Centennial Public School (gr jk-8)



*Change in School Age Population Last Year*

	Age 1 to 4	Age 5 to 8	Age 9 to 12	Age 13 to 16	Total Pop. Change (%)
Lambton Centennial	0.7%	13.5%	-5.0%	-6.2%	-0.3%

## ENROLMENT HISTORY AND PROJECTIONS

### LAMBTON CENTENNIAL

	Oct. 2004	Oct. 2005	Oct. 2006	Oct. 2007	Oct. 2008	Oct. 2009	Proj. 2010	Proj. 2011	Proj. 2012	Proj. 2013	Proj. 2014
<b>340</b>											
<b>JK</b>	22	29	17	31	19	21	21	26	26	25	26
<b>SK</b>	25	24	30	19	30	20	24	23	27	27	26
<b>GR.1</b>	29	26	26	29	24	31	24	24	24	30	29
<b>GR.2</b>	32	29	27	28	29	23	31	24	25	25	30
<b>GR.3</b>	30	33	27	25	27	30	23	33	24	25	24
<b>GR.4</b>	36	31	34	25	27	29	29	24	32	24	25
<b>GR.5</b>	43	36	31	34	26	27	28	31	24	32	24
<b>GR.6</b>	33	41	38	32	34	26	27	30	31	23	31
<b>GR.7</b>	43	33	41	37	34	34	26	27	30	32	24
<b>GR.8</b>	49	41	32	42	37	35	34	26	27	29	31
<b>SPEC.</b>											
<b>Totals</b>	<b>342</b>	<b>323</b>	<b>303</b>	<b>302</b>	<b>287</b>	<b>276</b>	<b>267</b>	<b>268</b>	<b>270</b>	<b>272</b>	<b>270</b>
<b>F.T.E.</b>	<b>318.50</b>	<b>296.50</b>	<b>279.50</b>	<b>277.00</b>	<b>262.50</b>	<b>255.50</b>	<b>244.50</b>	<b>243.50</b>	<b>243.50</b>	<b>246.00</b>	<b>244.00</b>
<b>%Full</b>	<b>85.27%</b>	<b>79.38%</b>	<b>74.83%</b>	<b>81.47%</b>	<b>77.21%</b>	<b>75.15%</b>	<b>71.91%</b>	<b>71.62%</b>	<b>71.62%</b>	<b>72.35%</b>	<b>71.76%</b>



# Communications

## Board Website

[www.lkdsb.net](http://www.lkdsb.net)



# Process for Public Input to ARC



# Questions

- **From Committee Members**
- **From Public**





# NEXT STEPS

# **DATES OF FUTURE MEETINGS**

- **Timelines**



- **Proposed Locations**